

## Product datasheet for **RC218756**

### GBP7 (NM\_207398) Human Tagged ORF Clone

#### Product data:

Product Type:	Expression Plasmids
Product Name:	GBP7 (NM_207398) Human Tagged ORF Clone
Tag:	Myc-DDK
Symbol:	GBP7
Synonyms:	GBP4L
Mammalian Cell Selection:	Neomycin
Vector:	pCMV6-Entry (PS100001)
E. coli Selection:	Kanamycin (25 ug/mL)



[View online »](#)

ORF Nucleotide  
Sequence:

>RC218756 representing NM\_207398  
Red=Cloning site Blue=ORF Green=Tags(s)

TTTTGTAATACGACTCACTATAGGGCGGCCGGAATTCGTCGACTGGATCCGGTACCGAGGAGATCTGCC  
GCCGCGATCGCC

ATGGCATCAGAGATCCACATGCCAGGCCAGTGTGCCTCACTGAGAACAATAAAGGCATCTGGTGGTGA  
ATTCAGAAGCTCTGGAAATCCTGTCTGCCATTACACAGCCTGTAGTAGTGGTGGCAATTGTGGCCCTCTA  
CCGCACAGGCAAATCCTACCTAATGAACAAGCTGGCTGGGAAGAACAAGGCTTCCCTCTGGGCTGCACA  
GTGAAGTCTGAAACCAAAGGCATCTGGATGTGGTGTGTGCCCCACCCCTCCAAGCCAAACCACACCTGA  
TCCTTCTGGACACGGAGGCTGGGTGATATGGAAAAGAGTGACCCTAAGAGTGACTCGTGGATCTTTGC  
CCTGGCTGTGCTTAAGCAGCAGCTTTGTCTACAACAGCATGGGCACCATCAACCACAGGCCCTGGAG  
CAGCTGCACTACGTGACTGAGCTAACAGAGCTAATCAGGGCAAATCGTGCCCGAGCTGATGAAGTTG  
AGGACTCCAGCGAGTTTGTGAGTTTCTTCCAGACTTTATTTGGACTGTTTCGAGATTTTACCTGGAGCT  
GAAGTTAGATGGACCCCATCACAGAAGATGAGTACCTGGAGAATGCCTTGAAGCTGATTTAGGCAAG  
AATCCCAAATCCAAAATTTCAACAAGCCAGGGAGTGGATCAGGCATTTCTTTCCAAAACAGAAGTGCT  
TTGTCTTTGACCGGCAATAAATGACAAAAAATCTTACTCCATGTTGAAGAAGTACGAGAAGACCAACT  
GGATAGTAATTTCCAGATGCAATCAGAAAATTTCTGTTCTTATATCTTACCCATGCAAAGACCAAGACC  
CTGAGAGAGGGAATCCTTGTCTACTGGAAACCGGCTGGGGATGCTGGTGGAGACCTACCTGGATGCCATCA  
ACAGTGGAGCGACTCCTTGTCTGGAGAATGCAATGGCAGTTCTGGCCAGTGTGAGAAGTACAGCAGCCGT  
GCAGAGGGCAGCAACCACTACAGCCAGCAGATGGCCAGCAAGTGAAGTATCCCAACAGACACACTCCAG  
GAGCTGCTGGACGTGCATGCAGTTTGTGAGAGGGAAGCCATTGCAGTCTTCATGGAGTACTCCTTCAAAG  
ATAAAAGCCAGGAATTTCAAGAAGCTTGTGGACACCATGGAGAAAAAGAAGGAAGACTTTGTGCTGCA  
GAATGAAGAGGCATCTGCCAAATATTGTAGGCTGAGCTTAAGCGGCTTTAGAGCTCTTGACAGAAAGT  
ATTTCAAGAGGAATTTCTTTGTTCCGGGGGGCACAATATCTACTTAGAAGCAAAAAAGAAGATTGAAC  
AGGACTATACACTAGTGCCAGAAAAGGAGTTAAGGCAGACGAGGCTCCTCCAGAGCTTCTGCAGTCACA  
GGTGGTTATAGAGGAATCCATCTGCAGTCAGACAAAGCCCTCACTGCTGGAGAGAAGGCCATAGCAGCT  
AAGCAGGCTAAGAAGGAGGCAGCTGAAAAGGAACAGGAGCTGCTAAGACAAAAACAGAAGGAACAGCAGC  
AAATGATGGAGGCTCAAGAGAGAAGTTCCAGGAAAACATAGCTCAACTCAAGAAGAAGTGGAGAGGGA  
AAGGAAAACTATATGAGAGAACTGAGAAAGATGTTGAGTCACAAGATGAAGTCTAGAAGAAGTCTT  
ACTGAAGGATTTAAAGAGATATTTGAGTCGTTAAATGAAGAGATTAATCGACTGAAAGAACAATTAAG  
CAGCTGAAAATGAAGAGCCCTCAGTGTTTTACAGATTCTTGATGTGGCTGGCAGTATATTTATTGCAGC  
ACTACCTGGGGCTGCTAAGCTAGTTGATTTAGGAATGAAAATCTTAGCTCATTATGTAATAGGCTGAGA  
AATCCTGGTAAGAAAATTATAAGC

ACGCGTACGCGGCCGCTCGAGCAGAACTCATCTCAGAAGAGGATCTGGCAGCAATGATATCCTGGATT  
ACAAGGATGACGACGATAAGGTTAA

**Protein Sequence:** >RC218756 representing NM\_207398  
Red=Cloning site Green=Tags(s)

MASEIHMPGPVCLTENTKGHLVVNSEALEILSAITQPVVVVAIVGLYRTGKSYLMNKLKAGKNKGFPLGCT  
 VKSETKGIWMCVPHPSKPNHTLILLDTEGLGDMEKSDPKSDSWIFALAVLLSSSFVYNSMGTINHQALE  
 QLHYVTELTELIRAKSCLPRPDEVEDSSEFVSFFPDFIWTVRDFTLELKLGDGHPITEDYLENALKLISGK  
 NPQIQNSNKPREWIRHFFPKQKCFVDRPINDKKLLLHVVEEVREDQLDSNFQMQSENFCSYIFTHAKTKT  
 LREGILVTGNRLGMLVETYLDAINSGATPCLENAMAVLAQCENSAVQRAANHYSQQMAQQVRFPTDTLQ  
 ELLDVHAVCEREIAVFMESFKDKSQEFQKLLVDTMEKKKEDFVLQNEEASAKYCQAEKRLSELLTES  
 ISRGTFVPGGHNILEAKKIEQDYTLVPRKGVKADEVLQSFLQSQVVEESILQSDKALTAGEKAIAA  
 KQAKKEAAEKEQELLRQKQKEQQMMEAQERSFQENIAQLKKKMERERENYMRELKMLSHKMKVLEELL  
 TEGFKEIFESLNEEINRLKEQIEAAENEPSVFSQILDVAGSIFIAALPGAACLVDLGMKILSSLCNRLR  
 NPGKKIIS

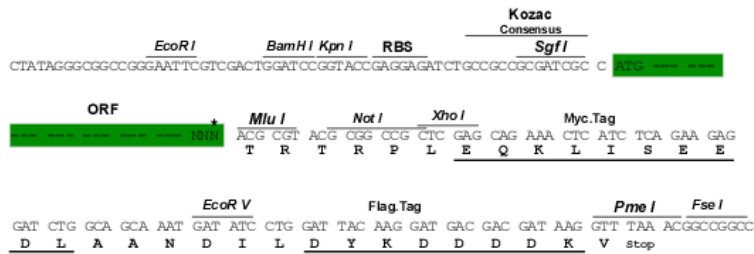
TRTRPLEQKLISEEDLAANDILDYKDDDDKV

**Chromatograms:** [https://cdn.origene.com/chromatograms/mk8021\\_c05.zip](https://cdn.origene.com/chromatograms/mk8021_c05.zip)

**Restriction Sites:** Sgfl-MluI

**Cloning Scheme:**

Cloning sites used for ORF Shuttling:



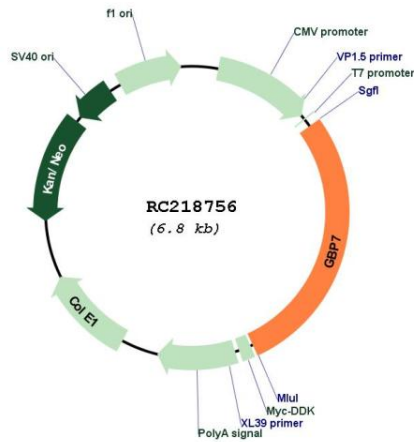
\* The last codon before the Stop codon of the ORF

**ACCN:** NM\_207398

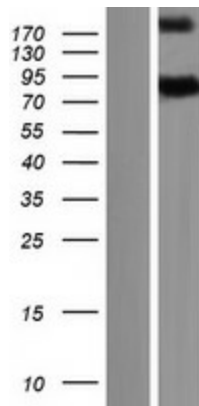
**ORF Size:** 1914 bp

<b>OTI Disclaimer:</b>	<p>Due to the inherent nature of this plasmid, standard methods to replicate additional amounts of DNA in E. coli are highly likely to result in mutations and/or rearrangements. Therefore, OriGene does not guarantee the capability to replicate this plasmid DNA. Additional amounts of DNA can be purchased from OriGene with batch-specific, full-sequence verification at a reduced cost. Please contact our customer care team at <a href="mailto:custsupport@origene.com">custsupport@origene.com</a> or by calling 301.340.3188 option 3 for pricing and delivery.</p> <p>The molecular sequence of this clone aligns with the gene accession number as a point of reference only. However, individual transcript sequences of the same gene can differ through naturally occurring variations (e.g. polymorphisms), each with its own valid existence. This clone is substantially in agreement with the reference, but a complete review of all prevailing variants is recommended prior to use. <a href="#">More info</a></p>
<b>OTI Annotation:</b>	This clone was engineered to express the complete ORF with an expression tag. Expression varies depending on the nature of the gene.
<b>Components:</b>	The ORF clone is ion-exchange column purified and shipped in a 2D barcoded Matrix tube containing 10ug of transfection-ready, dried plasmid DNA (reconstitute with 100 ul of water).
<b>Reconstitution Method:</b>	<ol style="list-style-type: none"> <li>1. Centrifuge at 5,000xg for 5min.</li> <li>2. Carefully open the tube and add 100ul of sterile water to dissolve the DNA.</li> <li>3. Close the tube and incubate for 10 minutes at room temperature.</li> <li>4. Briefly vortex the tube and then do a quick spin (less than 5000xg) to concentrate the liquid at the bottom.</li> <li>5. Store the suspended plasmid at -20°C. The DNA is stable for at least one year from date of shipping when stored at -20°C.</li> </ol>
<b>RefSeq:</b>	<a href="#">NM_207398.3</a>
<b>RefSeq Size:</b>	2418 bp
<b>RefSeq ORF:</b>	1917 bp
<b>Locus ID:</b>	388646
<b>UniProt ID:</b>	<a href="#">Q8N8V2</a>
<b>Cytogenetics:</b>	1p22.2
<b>MW:</b>	72.3 kDa
<b>Gene Summary:</b>	Guanylate-binding proteins, such as GBP7, are induced by interferon and hydrolyze GTP to both GDP and GMP (Olszewski et al., 2006 [PubMed 16689661]).[supplied by OMIM, Dec 2008]

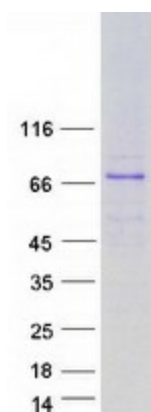
Product images:



Circular map for RC218756



Western blot validation of overexpression lysate (Cat# [LY404008]) using anti-DDK antibody (Cat# [TA50011-100]). Left: Cell lysates from untransfected HEK293T cells; Right: Cell lysates from HEK293T cells transfected with RC218756 using transfection reagent MegaTran 2.0 (Cat# [TT210002]).



Coomassie blue staining of purified GBP7 protein (Cat# [TP318756]). The protein was produced from HEK293T cells transfected with GBP7 cDNA clone (Cat# RC218756) using MegaTran 2.0 (Cat# [TT210002]).