

Product datasheet for **RC218755**

RRBP1 (NM_004587) Human Tagged ORF Clone

Product data:

Product Type:	Expression Plasmids
Product Name:	RRBP1 (NM_004587) Human Tagged ORF Clone
Tag:	Myc-DDK
Symbol:	RRBP1
Synonyms:	ES/130; ES130; hES; p180; RRp
Mammalian Cell Selection:	Neomycin
Vector:	pCMV6-Entry (PS100001)
E. coli Selection:	Kanamycin (25 ug/mL)



[View online »](#)

ORF Nucleotide Sequence:

>RC218755 representing NM_004587
 Red=Cloning site Blue=ORF Green=Tags(s)

TTTTGTAATACGACTCACTATAGGGCGGCCGGAATTCGTCGACTGGATCCGGTACCGAGGAGATCTGCC
 GCC**CGGATCGCC**

ATGGATATTTACGACACTCAAACCTTGGGGTTGTGGTCTTTGGAGGATTCATGGTTGTTTCTGCCATTG
 GCATCTTCTGGTGTGCGACTTTCTCCATGAAGGAAACGTCATATGAAGAAGCCCTAGCCAACCAGCGCAA
 GGAGATGGCGAAAACACCACCAGAAAGTCGAGAAGAAAAAGGAGAAAAACAGTGGAGAAGAAAGGA
 AAGACCAAGAAAAAGGAAGAGAAACCTAATGGGAAGATACCTGATCATGATCCAGCCCCAATGTGACTG
 TCCTCCTTCGAGAACCAGTGCGGGCTCCTGCTGTGGCTGTGGCTCCAACCCAGTGCAGCCCCCATTAT
 CGTTGCTCCTGTCCACAGTTCAGCCATGCCCCAGGAGAAGCTGGCCTCCTCCCCAAGGACAAAAAG
 AAGAAGGAGAAAAAGTGGCAAAAGTGGAAACAGCTGTCAGCTCTGTAGTGAATCCATCCAGGTTCTCA
 CTTCGAAGGCTGCCATCTTGAAACTGCTCCAAGGAGGGCAGAAATACAGATGTGGCCAGAGCCAGA
 GGCACCAAGCAAGAGGCTCCTGCAAGAAGAAGTCTGGTTCAAAGAAAAAGGGCCCCAGATGCCGAC
 GGCCCTCTACCTCCCCACAAGACGCTGGTCTCCACGGTTGGGAGCATGGTGTCAACAGAGGGCGAGG
 CCCAGCGGCTCATCGAGATCCTGTCTGAGAAGGCTGGCATCATTAGGACACCTGGCACAAGGCCACTCA
 GAAGGGTGACCCTGTGGCGATTCTGAAACGCCAGCTGGAAGAGAAGGAAAAACTGCTGGCCACAGAACAG
 GAAGATGCGGCTGTCCCAAGAGCAAACAGGGAGCTCAACAAGGAGATGGCAGCAGAAAAAGGCCAAAG
 CAGCAGCCGGGGAGGCCAAAGTAAAAAGCAGCTGGTGGCCCGGAGCAGGAGATCACGGCTGTGCAGGC
 ACGCATGCAGGCCAGCTACCGGGAGCACGTGAAGGAGTGCAGCAGCTGCAGGGCAAGATCCGGACTCTT
 CAGGACAGCTGGAGAATGGCCCCAACACGCAGCTGGCCCGCTGCAGCAGGAGAATCCATCCTGCGGG
 ATGCCTTGAACCAAGGCCACGAGCAGGTGGAGAGCAAGCAGCAGAGCTGGCCCAAGTTCGGCAGGA
 GCTCAGCAAGGTGAGCAAGAGCTGGTGGAGAAGTCAAGAGCTGTGCGGCAAGATGAGCAGCAGCGGAAA
 GCTCTGGAAGCCAAGGCAGCTGCCTTCGAGAAGCAGGTCCTGCAGCTGCAGGCGTCCCACAGGGAGAGTG
 AGGAGGCCCTGCAGAAGCGCTGGACGAGGTGAGCCGGGAGCTGTGCCACACGCAGAGCAGCCACGCCAG
 CCTCCGGGCGGATGCCGAGAAGGCCCAGGAGCAACAGCAGCAGATGGCCGAGCTGCACAGCAAGTTACAG
 TCCTCCGAGGGGAGGTGCGCAGCAAATGCGAGGAGCTGAGTGGCCTCCACGGCAGCTCCAGGAGGCCA
 GGGCAGAGAACTCCAGCTCACAGAGAGAATCCGTTCCATTGAGGCCCTGCTGGAGGCGGGCCAGGCGCG
 GGATGCCCAGGACGTCCAGGCCAGCCAGGCGGAGGCTGACCAGCAGCAGACTCGCCTCAAGGAGCTGGAG
 TCCAGGTGTGCGGTCTGGAGAAGGAGGCCATCGAGCTCAGGGAGCCGTGAGCAGCAGAAAGTGAAGA
 ACAATGACCTCCGGGAGAAGAACTGGAAGGCCATGGAGGCACTGGCCACGGCCGAGCAGGCTGCAAGGA
 GAAGCTGCACTCCCTGACCCAGGCCAAGGAGGAATCGAGAAGCAGCTCTGTCTGATTGAGGCGCAGACC
 ATGGAGGCCCTGTGGTCTGCTCCCAGAACTCTCTGTCTTGGCACAACAGAATTACACCGAGTGGCTGC
 AGGATCTCAAAGAGAAAGGCCCCAGCTGCTGAAGCACCCGCCAGCTCCCGCGGAGCCCTCCTCGGACCT
 GGCCTCCAAGTTGAGGGAGGCCGAGGAGACGCAGAGCACACTGCAGGCCGAGTGTGACCAGTACCGCAGC
 ATCCTGGCGGAGACGGAGGGCATGCTCAGAGACCTGCAGAAGAGCGTGGAGGAGGAGGAGCAGGTGTGA
 GGGCAAGGTGGCGCCGAGAGGAGGAGCTCCAGAAGTCCGGGTACAGTGAAGCATCTCGAAGAGAT
 TGTAGAGAAGCTAAAAGGAGAATTTGAAAGTTCGGACCAGGTGAGGGAGCACACGTCGATTTGGAGGCA
 GAGCTGGAAGGACATGGCGGCCGAGCAGCCGAGTGGCAGAAGTACGCCAAGGAGGTGGCAGGGCTGA
 GGCAACTTCTCCTAGAATCTCAATCTCAGCTCGATGCCGCAAGAGCGAAGCCAGAAACAGAGCGATGA
 GCTTGCCCTGGTCAAGCAGTGTGAGTGAATGAAGAGCCACGTAGAGGATGGTACATAGCTGGGGCC
 CCAGCTTCTCCAGAGGCGCCCCAGCCGAGCAGGACCCCGTTAGCTGAAGACGCAGCTGGAGTGGA
 CAGAAGCCATCCTGGAGGATGAGCAGACACAGCGGAGAAAGCTCATGGCCGAGTTTGGAGGCTCAGAC
 CTCGGCATGTGCGTTACAAGAAGATTGGAGAAGCTCCGCACAGCCGGCCCCCTAGAGTCTCAGAAACA
 GAGGAGGCTCACAGCTGAAGGAGAGACTAGAAAAAGAGAAGAAGTTAACAGTGACCTGGGGCGCGCCG
 CCACGAGACTGCAGGAGCTTCTGAAGACACCCAGGAGCAGCTGGCAAGGGAGAAGGACACGGTGAAGAA
 GCTGCAGGAACAGCTGGAAGGAGCAGGACGGCAGCAGCTCAAAGGAGGGCACCTCTGTCT

ACGCGTACGCGGCCGCTCGAGCAGAAACTCATCTCAGAAGAGGATCTGGCAGCAAATGATATCCTGGATT
 ACAAGGATGACGACGATAAGGTTTAA

Protein Sequence: >RC218755 representing NM_004587
Red=Cloning site Green=Tags(s)

```
MDIYDTQTLGVVVFGGFMVSAIGIFLVSTFSMKETSYYEALANQRKEMAKTHHQKVEKKKKEKTVEKKG
KTKKKEEKPNKIPDHPAPNVTLLREPVRAPAVAVAPTPVQPPPIIVAPVATVPAMPQEKLASSPKDKK
KKEKKVAKVEPAVSSVNSIQVLTSKAAILETAPKEGRNTDVAQSPEAPKQEAAPAKKSGSKKKGPPDAD
GPLYLPYKTLVSTVSGSMVFNEGEAQRLEIEILSEKAGIIQDTWHKATQKGDVPVAILKRQLEEKELATEQ
EDA AVAKSKLRELNKEMAAEKAKAAAGEAKVKKQLVAREQEITAVQARMQASYREHVKEVQQLQGGIRTL
QEQLENGNTQLARLQQENSILRDALNQATSQVESKQNAELAKLRQELSKVSKELVEKSEAVRQDEQQRK
ALEAKAAAFKQVLQLQASHRESEEALQKRLDEVSRLECHTQSSHASLRADA EKAQEQQQMAELHSLKQ
SSEAEVRSKCEELSGLHGQLQEARAENSQLTERIRSIEALLEAGQARDAQDVQASQAEADQQTRLKELE
SQVSGLEKEAIELREAVEQQKVNNDLREKNWKAMEALATAEQACKEKLHSLTQAKESEKQLCLIEAQT
MEALLALLPEL SVLAQQNYTEWLQDLKEKGPTLLKHPPAPAEPSSDLASKLREAEETQSTLQAECDQYRS
ILAETEGMLRDLQKSVEEEEQVWRAKVGAAEEELQKSRVTVKHLEEIVEKLGELSSDQVREHTSHLEA
ELEKHMAAA SAECQNYAKEVAGLRQLLLESQSQLDAAKSEAQKQSDDELALVRQQLSEMKSHVEDGDIAGA
PASSPEAPPAEQDPVQLKTQLEWTEAILEDEQTRQKLMAEFEEAQT SACRLQEELEKLR TAGPLESSET
EASQLKERLEKEKLLTSDLGRAATRLQELLKTTQEQLAREKDTVKKLQEQLKAEDGSSSKEGTSV
```

TRTRPLEQKLISEEDLAANDILDYKDDDDKV

Chromatograms: https://cdn.origene.com/chromatograms/mk8005_c06.zip

Restriction Sites: SgfI-MluI

Cloning Scheme:

Cloning sites used for ORF Shuttling:



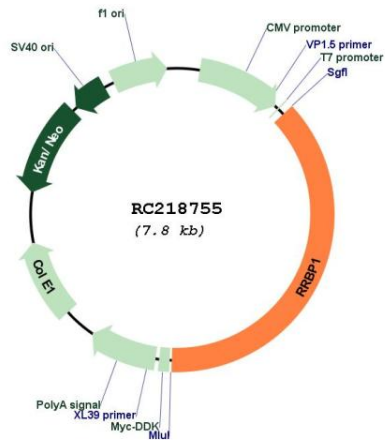
* The last codon before the Stop codon of the ORF

ACCN: NM_004587

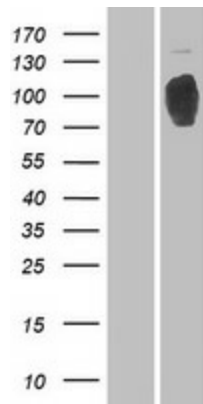
ORF Size: 2931 bp

OTI Disclaimer:	The molecular sequence of this clone aligns with the gene accession number as a point of reference only. However, individual transcript sequences of the same gene can differ through naturally occurring variations (e.g. polymorphisms), each with its own valid existence. This clone is substantially in agreement with the reference, but a complete review of all prevailing variants is recommended prior to use. More info
OTI Annotation:	This clone was engineered to express the complete ORF with an expression tag. Expression varies depending on the nature of the gene.
Components:	The ORF clone is ion-exchange column purified and shipped in a 2D barcoded Matrix tube containing 10ug of transfection-ready, dried plasmid DNA (reconstitute with 100 ul of water).
Reconstitution Method:	<ol style="list-style-type: none">1. Centrifuge at 5,000xg for 5min.2. Carefully open the tube and add 100ul of sterile water to dissolve the DNA.3. Close the tube and incubate for 10 minutes at room temperature.4. Briefly vortex the tube and then do a quick spin (less than 5000xg) to concentrate the liquid at the bottom.5. Store the suspended plasmid at -20°C. The DNA is stable for at least one year from date of shipping when stored at -20°C.
RefSeq:	NM_004587.1 , NP_004578.1
RefSeq Size:	3106 bp
RefSeq ORF:	2934 bp
Locus ID:	6238
UniProt ID:	Q9P2E9
Cytogenetics:	20p12.1
Domains:	Rib_recp_KP_reg
Protein Families:	Druggable Genome, Transmembrane
MW:	108.5 kDa
Gene Summary:	This gene encodes a ribosome-binding protein of the endoplasmic reticulum (ER) membrane. Studies suggest that this gene plays a role in ER proliferation, secretory pathways and secretory cell differentiation, and mediation of ER-microtubule interactions. Alternative splicing has been observed and protein isoforms are characterized by regions of N-terminal decapeptide and C-terminal heptad repeats. Splicing of the tandem repeats results in variations in ribosome-binding affinity and secretory function. The full-length nature of variants which differ in repeat length has not been determined. Pseudogenes of this gene have been identified on chromosomes 3 and 7, and RRBP1 has been excluded as a candidate gene in the cause of Alagille syndrome, the result of a mutation in a nearby gene on chromosome 20p12. [provided by RefSeq, Apr 2012]

Product images:



Circular map for RC218755



Western blot validation of overexpression lysate (Cat# [LY420989]) using anti-DDK antibody (Cat# [TA50011-100]). Left: Cell lysates from untransfected HEK293T cells; Right: Cell lysates from HEK293T cells transfected with [RC218816] using transfection reagent MegaTran 2.0 (Cat# [TT210002]).