

Product datasheet for **RC218751**

ZHX3 (NM_015035) Human Tagged ORF Clone

Product data:

Product Type:	Expression Plasmids
Product Name:	ZHX3 (NM_015035) Human Tagged ORF Clone
Tag:	Myc-DDK
Symbol:	ZHX3
Synonyms:	TIX1
Mammalian Cell Selection:	Neomycin
Vector:	pCMV6-Entry (PS100001)
E. coli Selection:	Kanamycin (25 ug/mL)



[View online »](#)

ORF Nucleotide Sequence:

>RC218751 representing NM_015035
 Red=Cloning site Blue=ORF Green=Tags(s)

TTTTGTAATACGACTCACTATAGGGCGGCCGGAATTCGTCGACTGGATCCGGTACCGAGGAGATCTGCC
 GCC**CGCATCGCC**

ATGGCCAGCAAGAGGAAATCCACCACCATGCATGATCCAGTGAAGACTGTGGTGTGCAAGATGCCA
 GCATGGAGGCCAGCCCGCTGAGACCTTGCTGAAGGACCCAGCAGGATCTGCCCCAGAACATCTGC
 TGCCAGCAGTGAGGCAGCACAGAACCCAGCAGTACTGATGGCTTACACTGGCCAAATGGGCATCGGAGC
 ACTTTAGATGGCTATTTATATTCTGTAATACTGCGATTTTCAGATCCCATGACATGACCAATTTGTGG
 GACATATGAACTCAGAGCACACAGACTTTAATAAAGACCCAACTTTGTATGCAGTGGTGCAGTTTTCT
 GGCAAAAACCCCTGAGGGGCTTCTTGCAACAATGCCACATGTCCTCCGGGAAGCCAGCTTTGTGTGG
 AACGTGGCCAAGCCAGACAATCATGTGGTGTGGAGCAGAGCATCCCTGAGAGCACCAGCACTCCTGACC
 TAGCGGGTGAAGCCAGTGTGAAGGGGCTGATGGACAGGCAGAAATCATCATTACAAAACCTCAATCAT
 GAAGATAATGAAAGGCAAAGCTGAAGCCAAAAAATTCATACACTCAAGGAGAATGTCCCTAGCCAGCCT
 GTGGGTGAGGCCCTTACCAAAGCTGTGACTGGAGAAATGGAGGTGAGAGAGGGGGACCATTCCCTTCA
 ATGGGGCAGTTCCAGTCAGCCAGGCATCTGCCAGCTCTGCAAAAACCCCATGCCGCCAACGGGCCCT
 GATAGGAACAGTGCCAGTTTTGCCAGCTGGCATAGCACAGTTCCTCTCCCTCCAGCAGCAGCCCCAGTG
 CATGCCAACACCATGTCCACCAGCCACTGCCACGGCCAAGGCCCTTCCCAAAGTGATGATCCCCCTGA
 GCAGCATTCCAACGTACAATGCAGCCATGGACTTAACAGCTTCTGAAGAACTCCTTCCACAAGTTCCC
 CTACCCACCAAAGCCGAGCTCTGCTATTTGACTGTGGTGACCAAGTATCCAGAAGAAGCTCAAGATC
 TGGTTCACAGCCCAAAGGCTGAAGCAGGGGATCAGCTGGTCCCTGAGGAGATTGAGGATGCCCGAAAA
 AGATGTTCAATACAGTCATCCAGTCTGTGCTCAGCCACAATTACGGTCTAAATACCCCACTCGTCGC
 CAGTGTGGCAATGTCCAGCATCTCATCCAGGCCGCTCTCCAGGTCACGTTGTGGGGCAGCCAGAGGGT
 ACAGGAGGGGACTTCTGGTCACTCAGCCATTGATGGCCAATGGGTTGCAAGCAACAAGTCCCTCTCC
 CCCTCACGGTGACATCCGTCCCAAGCAGCCAGGTGTGGCACCCATTAACACTGTGTGTTCAAATACAAC
 GTCAGCTGTGAAGGTGGTCAATGCGGCCAGTCTGCTCCTCACGGCCTGCCCCAGCATAACCTCCCAAGCC
 TTCCTTGATGCTAGCATCTACAAAAATAAGAAATCTCATGAACAGCTGTCAGCTCTGAAAGGGAGTTCT
 GTCGGAACCAGTCCCAGGGCAGAGCGAAGTTGAACATCTCACAAAAGTGACGGGCCTCAGTACCAGAGA
 GGTGCGGAAATGGTTCAGTGATCGTAGATACCACTGCCGGAAGTGAAGGGCTCCAGAGCGATGATACCT
 GGAGATCACAGTTCATCATATTGACTCTGTGCCAGAGGTGTCCTTCTCCCATCGTCCAAGGTCCCTG
 AGGTAACCTGCATTCCGACAACAGCCACACTAGCAACCCACCCTTCTGCCAAACGACAATCTTGGACCA
 GACTCCTGACTTCACACCAACCAATACAAAGGAGAGAGCCCTGAGCAGCTCAGAGCCCTGGAGAGCAGT
 TTTGCACAAAACCTCTTCTCTTGATGAGGAACTGGACCGCCTGAGAAGTGAACCAAAAATGACCCGAC
 GAGAAATTGATAGCTGGTTTTTTCAGAGAGACGAAAAAAGTGAATGCTGAGGAGACCAAGAAGGCTGAGGA
 GAATGCCTCTCAGGAGGAAGAGGAGGCTGCTGAGGATGAGGGTGGAGAAGAGGATTTGGCCAGTGAGCTA
 AGGGTCTCTGGTGAATAAGGCTCTGGAATGCCAGCAGCCATATCTTGGCAGAGCGCAAAGTCAGCC
 CCATTAATAACCTGAAGAACCTGAGGGTCACTGAAGCCAATGGCAGGAACGAGATCCAGGGCTGGG
 TGCTGTGACCCCTGAGGATGATGAGTCAAACAACTGGCAGAGCAGCTCCAGGCAAAGTGAGCTGCAAA
 AAGACTGCCAGCAGCGCACTTGTGCGGCAGCTCTTTGTCCAGACACAGTGGCCAAGCAACCAGGACT
 ATGACTCCATCATGGCCAGACGGTCTGCCACGGCCAGAGGTGGTGGCTGGTTTGGAGATAGCAGGTA
 CGCACTGAAGAACGGCCAACTCAATGGTACGAAGACTATAAGCGAGGCAACTTCCACCAGGGCTACTG
 GTCATTGCCCTGGCAACCGGGAGCTCTGCAGGACTATTACATGACACACAAGATGCTGTATGAAGAGG
 ACCTGCAGAACCTCTGTGACAAGACCCAGATGAGCTCCAGCAGGTCAAGCAGTGGTTTGTGAGAAAAAT
 GGGGGAGGAGACCAGAGCCGTGGCAGACACAGGCAGTGAAGACCAGGGCCCTGGTACTGGTGAAGCTACA
 GCAGTTCAAAAAGGATGGGTGACACCTATTAGAGGTGTCTGAGAACAGTGAAGTGGGAGCCCCGTG
 TCCCTGAGGCCAGCTCAGAGCCCTTACACATCGAGTCCCAGGCTGGACGTCAGCTCGAAACAGAC

ACGCGTACGCGGCCGCTCGAGCAGAAACTCATCTCAGAAGAGGATCTGGCAGCAAATGATATCCTGGATT
 ACAAGGATGACGACGATAAGGTTTAA

Protein Sequence: >RC218751 representing NM_015035
 Red=Cloning site Green=Tags(s)

```
MASKRKSTTPCMIPVKTVVLQDASMEAQPAETLPEGPQQDLPEEASAASSEAAQNPSTDGSTLANGHRS
TLDGYLYSCKYCDFRSHDMTQFVGHMNSEHTDFNKDPTFVCSGCSFLAKTPEGLSLHNATCHSGEASFVW
NVAKPDNHVVVEQSIPESTSTPDLAGEPSAEGADGQAEIIITKTPIMKIMKGKAEAKKIHTLKENVPSQP
VGEALPKLSTGEMEVREGDHSFINGAVPVVSQASASSAKNPHAANGPLIGTVPVLPAGIAQFLSLQQPPV
HAQHVVHQPLPTAKALPKVMIPLSSIPTYNAAMDSNSFLKNSFHKFPYPTKAELCYLTVVTKYPEEQLKI
WFTAQRLKQGISWSPEEIEDARKKMFNTVIQSVPOPTITVLTNPLVASAGNVQHLIQAALPGHVVGQPEG
TGGGLLVTPQLMANGLQATSSPLPLTVTSVPKQPGVAPINTVCSNTTSAVKVNNAAQSLLTACPSITSQA
FLDASIYKNKKSHEQLSALKGSFCRNQFPQSEVEHLTKVTGLSTREVRKWFSDRRYHCRNLKGSRAMIP
GDHSSIIIDSVPVFSFSPSSKVPEVTCIPTATLATHPSAKRQSWHQTPDFTPTKYKERAPEQLRALESS
FAQNPLPLDELDRLRSETKMTRREIDSWFSERRKKVNAEETKKAENASQEEEEAAEDEGGEDLASEL
RVSGENGSLEMPSSHILAEKRVSPKIKINLKNLRVTEANGRNEIPLGACDPEDDENKLAELQPGKVSCK
KTAQQRHLLRQLFVQTQWPSNQDYDSIMAQTGLPRPEVVRWFGDSRYALKNGQLKWYEDYKRGNFPPGLL
VIAPGNRELLQDYIMTHKMLYEEDLQNLCDKTQMSQQVQKQWFAEKMGEETRAVADTGSDDQGGPGTGELT
AVHKGMDTYSEVSENSEWEPRVPEASSEPFDTSSPQAGRQLETD
```

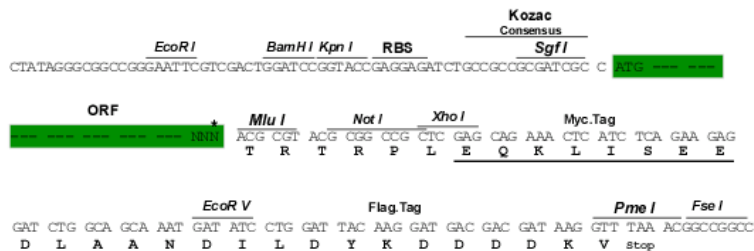
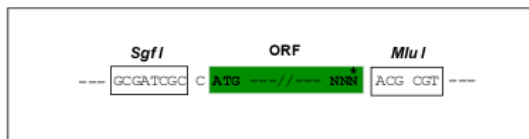
TRTRPLEQKLISEEDLAANDILDYKDDDDKV

Chromatograms: https://cdn.origene.com/chromatograms/mk8021_a05.zip

Restriction Sites: SgfI-MluI

Cloning Scheme:

Cloning sites used for ORF Shuttling:



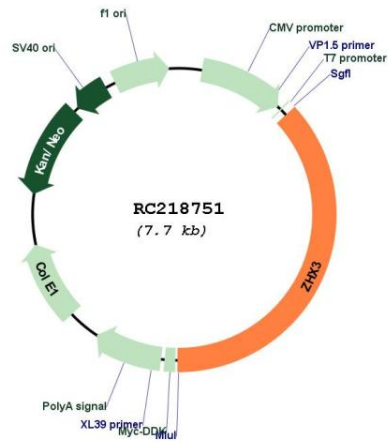
* The last codon before the Stop codon of the ORF

ACCN: NM_015035

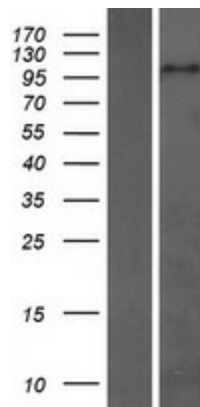
ORF Size: 2868 bp

OTI Disclaimer:	The molecular sequence of this clone aligns with the gene accession number as a point of reference only. However, individual transcript sequences of the same gene can differ through naturally occurring variations (e.g. polymorphisms), each with its own valid existence. This clone is substantially in agreement with the reference, but a complete review of all prevailing variants is recommended prior to use. More info
OTI Annotation:	This clone was engineered to express the complete ORF with an expression tag. Expression varies depending on the nature of the gene.
Components:	The ORF clone is ion-exchange column purified and shipped in a 2D barcoded Matrix tube containing 10ug of transfection-ready, dried plasmid DNA (reconstitute with 100 ul of water).
Reconstitution Method:	<ol style="list-style-type: none">1. Centrifuge at 5,000xg for 5min.2. Carefully open the tube and add 100ul of sterile water to dissolve the DNA.3. Close the tube and incubate for 10 minutes at room temperature.4. Briefly vortex the tube and then do a quick spin (less than 5000xg) to concentrate the liquid at the bottom.5. Store the suspended plasmid at -20°C. The DNA is stable for at least one year from date of shipping when stored at -20°C.
RefSeq:	NM_015035.4
RefSeq Size:	10007 bp
RefSeq ORF:	2871 bp
Locus ID:	23051
UniProt ID:	Q9H4I2
Cytogenetics:	20q12
Protein Families:	Transcription Factors
MW:	104.5 kDa
Gene Summary:	This gene encodes a member of the zinc fingers and homeoboxes (ZHX) gene family. The encoded protein contains two C2H2-type zinc fingers and five homeodomains and forms a dimer with itself or with zinc fingers and homeoboxes family member 1. In the nucleus, the dimerized protein interacts with the A subunit of the ubiquitous transcription factor nuclear factor-Y and may function as a transcriptional repressor. [provided by RefSeq, Jul 2008]

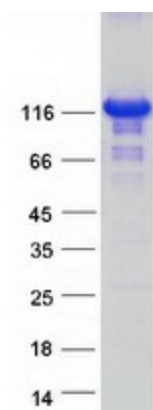
Product images:



Circular map for RC218751



Western blot validation of overexpression lysate (Cat# [LY414837]) using anti-DDK antibody (Cat# [TA50011-100]). Left: Cell lysates from untransfected HEK293T cells; Right: Cell lysates from HEK293T cells transfected with RC218751 using transfection reagent MegaTran 2.0 (Cat# [TT210002]).



Coomassie blue staining of purified ZHX3 protein (Cat# [TP318751]). The protein was produced from HEK293T cells transfected with ZHX3 cDNA clone (Cat# RC218751) using MegaTran 2.0 (Cat# [TT210002]).