

Product datasheet for RC218750

Ficolin 2 (FCN2) (NM_015837) Human Tagged ORF Clone

Product data:

Product Type:	Expression Plasmids
Product Name:	Ficolin 2 (FCN2) (NM_015837) Human Tagged ORF Clone
Tag:	Myc-DDK
Symbol:	Ficolin 2
Synonyms:	EBP-37; FCNL; ficolin-2; P35
Mammalian Cell Selection:	Neomycin
Vector:	pCMV6-Entry (PS100001)
E. coli Selection:	Kanamycin (25 ug/mL)
ORF Nucleotide Sequence:	>RC218750 representing NM_015837 Red=Cloning site Blue=ORF Green=Tags(s)

TTTTGTAATACGACTCACTATAGGGCGGCCGGGAATTCGTCGACTGGATCCGGTACCGAGGAGATCTGCC
GCC**CGATCGCC**

ATGGAGCTGGACAGAGCTGTGGGGTCTGGGCGCTGCCACCCTGCTGCTCTTTCTGGGCATGGCCT
GGGCTCTCAGGGCGCAGACACCTGTCCAGGAGAACGTGGCCCCCTGGACCTCTGGGAAGGCAGGACC
ACCTGGGCCAACGGAGCACCTGGGAGCCCCAGCCGTGCCTGACAGGCCCGGTACCTGCAAGGACCTG
CTAGACCGAGGGCACTTCTGAGCGCTGGCACACCATCTACCTGCCGACTGCCGGCCCCTGACTGTGC
TCTGTGACATGGACACGGACGGAGGGGCTGGACCGTTTTCCAGCGGAGGGTGGATGGCTCTGTGGACTT
CTACCGGACTGGCCACGTACAAGCAGGGCTTCGGCAGTCGGCTGGGGGAGTTCTGGCTGGGGAATGAC
AACATCCACGCCCTGACCGCCAGGGAACAGCGAGCTCCGTGTAGACCTGGTGGACTTTGAGGACAACT
ACCAGTTTGCTAAGTACAGATCATTCAAGGTGGCCGACGAGGCGGAGAAGTACAATCTGGTCTGGGGGC
CTTCGTGGAGGGCAGTGCGGGAGATTCCTGACGTTCCACAACAACAGTCCTTCTCCACCAAAGACCAG
GACAATGATCTTAACACCGGAAATTGTGCTGTGATGTTTCAGGGAGCTTGGTGGTACAAAACTGCCATG
TGCAAACTGAATGGTCGCTACCTCAGGGGACTCATGGCAGCTTTGCAATGGCATCAACTGGAAGTC
GGGAAAGGATACAATTATAGCTACAAGGTGTCAGAGATGAAGGTGCGACCTGCC

ACGCGTACGCGGCCGCTCGAGCAGAACTCATCTCAGAAGAGGATCTGGCAGCAAATGATATCCTGGATT
ACAAGGATGACGACGATAAGGTTTAA



[View online »](#)

Protein Sequence: >RC218750 representing NM_015837
Red=Cloning site Green=Tags(s)

MELDRAVGVLGAAATLLLSFLGMAWALQAADTCGGERGPPGPPGKAGPPGPNAGPGEQPCLTGPRTCKDL
 LDRGHFLSGWHTIYLPDCRPLTVLCDMDTDGGGWTVFQRRVDGSVDFYRDWATYKQGFSGRLGEFWLGND
 NIHALTAQGTSELRVLDVDFEDNYQFAKYRSFKVADEAEKYNLVLGAFVEGSAGDSLTFHNNQSFSTKDQ
 DNDLNTGNCAVMFQGAWWYKNCHVSNLNGRYLRGTHGSFANGINWKS GKGYNSYKVS EMKVRPA

TRTRPLEQKLISEEDLAANDILDYKDDDDKV

Chromatograms: https://cdn.origene.com/chromatograms/mk8009_d05.zip

Restriction Sites: SgfI-MluI

Cloning Scheme:



ACCN: NM_015837

ORF Size: 825 bp

OTI Disclaimer: The molecular sequence of this clone aligns with the gene accession number as a point of reference only. However, individual transcript sequences of the same gene can differ through naturally occurring variations (e.g. polymorphisms), each with its own valid existence. This clone is substantially in agreement with the reference, but a complete review of all prevailing variants is recommended prior to use. [More info](#)

OTI Annotation: This clone was engineered to express the complete ORF with an expression tag. Expression varies depending on the nature of the gene.

Components: The ORF clone is ion-exchange column purified and shipped in a 2D barcoded Matrix tube containing 10ug of transfection-ready, dried plasmid DNA (reconstitute with 100 ul of water).

Reconstitution Method:

1. Centrifuge at 5,000xg for 5min.
2. Carefully open the tube and add 100ul of sterile water to dissolve the DNA.
3. Close the tube and incubate for 10 minutes at room temperature.
4. Briefly vortex the tube and then do a quick spin (less than 5000xg) to concentrate the liquid at the bottom.
5. Store the suspended plasmid at -20°C. The DNA is stable for at least one year from date of shipping when stored at -20°C.

RefSeq: [NM_015837.2](#), [NP_056652.1](#)

RefSeq Size: 943 bp

RefSeq ORF: 828 bp

Locus ID: 2220

UniProt ID: [Q15485](#)

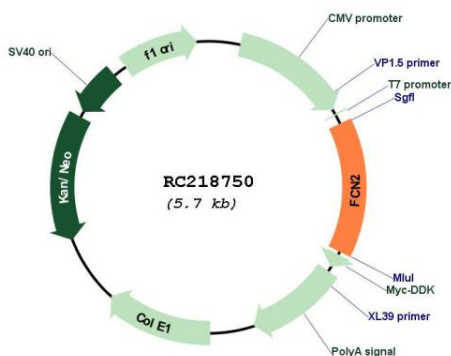
Cytogenetics: 9q34.3

Protein Families: Druggable Genome, Secreted Protein, Transmembrane

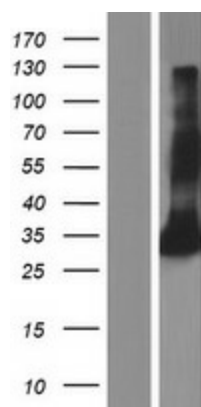
MW: 30.23 kDa

Gene Summary: The product of this gene belongs to the ficolin family of proteins. This family is characterized by the presence of a leader peptide, a short N-terminal segment, followed by a collagen-like region, and a C-terminal fibrinogen-like domain. This gene is predominantly expressed in the liver, and has been shown to have carbohydrate binding and opsonic activities. Alternatively spliced transcript variants encoding different isoforms have been identified. [provided by RefSeq, Jul 2008]

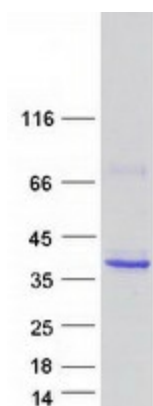
Product images:



Circular map for RC218750



Western blot validation of overexpression lysate (Cat# [LY414367]) using anti-DDK antibody (Cat# [TA50011-100]). Left: Cell lysates from untransfected HEK293T cells; Right: Cell lysates from HEK293T cells transfected with RC218750 using transfection reagent MegaTran 2.0 (Cat# [TT210002]).



Coomassie blue staining of purified FCN2 protein (Cat# [TP318750]). The protein was produced from HEK293T cells transfected with FCN2 cDNA clone (Cat# RC218750) using MegaTran 2.0 (Cat# [TT210002]).