

Product datasheet for RC218748

KDM5D (NM_004653) Human Tagged ORF Clone

Product data:

Product Type: Expression Plasmids
Product Name: KDM5D (NM_004653) Human Tagged ORF Clone
Tag: Myc-DDK
Symbol: KDM5D
Synonyms: HY; HYA; JARID1D; SMCY
Vector: pCMV6-Entry (PS100001)
E. coli Selection: Kanamycin (25 ug/mL)
Cell Selection: Neomycin
ORF Nucleotide Sequence: >RC218748 representing NM_004653
 Red=Cloning site Blue=ORF Green=Tags(s)

TTTTGTAATACGACTCACTATAGGGCGCCGGGAATTCGTCGACTGGATCCGGTACCGAGGAGATCTGCC
 GCC**CGATCGCC**

ATGGAACCGGGTGTGACGAGTTCCTGCCGCCACCGAGTGCCCGTTTTTGAGCCTAGCTGGGCTGAAT
 TCCAAGACCCGTTGGCTACATTGCGAAAATAAGGCCATAGCAGAGAAGTCTGGCATCTGCAAAATCCG
 CCCACCCGCGGATTGGCAGCCTCCTTTTGCAGTAGAAGTTGACAATTCAGATTTACTCCTCGCGTCCAA
 AGGCTAAATGAACTGGAGGCCAAACTAGAGTGAATGAACTATTTGGATCAGATTGCAAAATCTGGG
 AAATTCAGGCTCCTCTTTAAAGATTCCAATGTGGAGCGGAAGATCTTGACCTCTACAGCCTTAGTAA
 GATTGTGATTGAGGAAGGTGGCTATGAAGCCATCTGCAAGGATCGTCCGGTGGGCTCGAGTTGCCAGCGT
 CTCCACTACCCACGCAAAAACATTGGCTCCCTGCTACGATCACATTACGAACGCATTATTTACCCCT
 ATGAAATGTTTCAGTCTGGAGCCAACCATGTGCAATGTAACACACACCCGTTTGACAATGAGGTAAGA
 TAAGGAATACAAGCCCCACAGCATCCCCCTTAGACAGTCTGTGCAGCCTCAAAGTTCAGCAGCTACAGT
 CGACGGGCAAAAAGGCTACAGCCTGATCCAGAGCCTACAGAGGAGGACATTGAGAAGCATCCAGAGCTAA
 AGAAGTTACAGATATATGGGCCAGTCCCAAAATGATGGGCTTGGGCTTATGGCTAAGGATAAGGATAA
 GACTGTGCATAAGAAAGTACATGCCCCCAACTGTTACGGTGAAGGATGAGCAAAGTGGAGGTGGGAAC
 GTGTCATCAACATTGCTCAAGCAGCACTTGAGCCTAGAGCCCTGCACTAAGACAACCATGCAACTTCGAA
 AGAATCACAGCAGTGCCAGTTTATTGACTCATATATTTGCCAAGTATGCTCCCGTGGGGATGAAGATGA
 TAAGCTCTTTTCTGTGATGGCTGTGATGACAATTACCACATCTTCTGCTTGTACCACCCCTTCTGAA
 ATCCCCAGAGGCATCTGGAGGTGCCAAAATGTATCTTGGCGGAGTGTAAACAGCCTCCTGAAGCTTTT
 GATTTGAACAGGCTACCCAGGAGTACAGTTTGCAGAGTTTGGTGAATGGCTGATTCCTCAAGTCCGA
 CTACTTCAACATGCCTGTACATATGGTGCCTACAGAATTTGAGAGAAGGAATTTGGAGGCTGGTGAAC
 AGCATTGAGGAAGACGTGACAGTTGAATATGGAGCTGATATTCATTCCAAGAATTTGGCAGTGGCTTTC
 CTGTCAGCAATAGCAAACAAAATCTATCTCCTGAGGAGAAGGAGTATGCGACCAAGTGGTTGGAACCTGAA
 TGTGATGCCAGTCTAGATCAGTCTGTTCTCTGTACATCAATGCAGACATCTCAGGCATGAAGGTGCC
 TGCTGTACGTGGGCATGGTTTTCTCAGCATTTTGTGGCATATTGAGGATCACTGGAGTTACTCTATTA



ACTATCTGCATTGGGGTGAAGCCGACCTGGTATGGTGTACCCTCCCTGGCAGCAGAGCATTGGAGGA
 GGTGATGAAGATGCTGACACCTGAGCTGTTTATAGCCAGCCTGATCTCCTACACCAGCTTGTCACTCTC
 ATGAATCCCAACACTTTGATGTCCCATGGTGTGCCAGTTGTCCGCACAAACCAGTGTGCAGGGGAGTTG
 TCATCACTTTTCTCGTGCTTACCACAGTGGTTTTAACCAAGGCTACAATTTTGTGAAGCTGTCAACTT
 TTGTACTGCTGACTGGCTACCTGCTGGACGCCAGTGCATTGAACACTACCGCCGGCTCCGGCGCTATTGT
 GTCTTCTCCACAGGAGCTCATCTGCAAGATGGTGCCTTCCAGAGACGTTGGATCTCAATCTAGCAG
 TAGCTGTGCACAAGGAGATGTTTATTAGTTTCAGGAGGAGCGACGTCTACGAAAGGCCCTTTGGAGAA
 GGGCGTACGGAGGCTGAGCGAGAGGCTTTTGGAGCTGCTCCAGATGATGAACGCCAGTGCATCAAGTGC
 AAGACCACGTGCTTCTTGTGACGCCCTGGCTGCTACGACTGCCAGATGGCCTTGTATGCCTTTCCACA
 TCAATGACCTCTGCAAGTCTAGTAGCCGACAGTACCTCCGGTATCGGTACACCTTGGATGAGCTCCC
 CACCATGTGCATAAACTGAAGATTCGGGCTGAGTCTTTTACACCTGGGCCAACAAAGTGCAGTGGCC
 TTGGAGGTGGAGGATGGCCGTAACGCAGCTTTGAAGAGCTAAGGGCACTGGAGTCTGAGGCTCGTGA
 GGAGGTTTCTAATAGTGAAGTCTTACGCGACTGAAGAACTGCCTGAGTGAAGTGGAGGCTTGTATTGC
 TCAAGTCTGGGGCTGGTCAAGTGGTCAAGTGGCCAGGATGGACACTCCACAGTGCCTTACTGAACTC
 CGGGTCTTCTTGGAGCAGATGGGCAGCCTGCCCTGTGCCATGCATCAGATTGGGGATGTCAAGGATGCC
 TGGAACAGGTGGAGGCCATCAAGCTGAGGCTCGTGAGGCTCTGGCCACACTGCCCTCTAGTCCAGGGCT
 ATTGCGGTCCCTGTTGGAGAGGGGGCAGCAGTGGGTGTAGAGGTGCCTGAAGCCATCAGCTTACAGCAG
 CAGGTGGAGCAGGCGCAATGGCTAGATGAAGTGAAGCAGGCCCTGGCCCTTCTGCTCACAGGGGCTCTC
 TGGTCAATCATGCAGGGGCTTTTGGTTATGGGTGCCAAGATAGCCTCCAGCCCTTCTGTGGACAAGGCCCG
 GGCTGAGCTGCAAGAAGTACTGACCATTCAGAGCGCTGGGAAGAAAAGGCTCATTTCTGCCTGGAGGCC
 AGGCAGAAGCATCCACCAGCCACATTGGAAGCCATAATTCGTGAGACAGAAAACATCCCTGTTCACTGC
 CTAACATCCAGGCTCTCAAGAAGCTCTGACTAAGGCACAAGCTTGGATTGCTGATGTGGATGAGATCCA
 AAATGGTGACCACTACCCCTGTCTAGATGACTTGGAGGGCTGGTGGCTGTGGCCGGGACTGCCTGTG
 GGGCTGGAAGAGCTGAGACAGCTAGAGCTGCAGGTATTGACAGCACATTCTGGAGAGAGAAGGCCCTCCA
 AGACCTTTCTCAAGAAGAATTCTTGTACACACTGCTTGAAGTGTCTTGGCCGTGTGCAGACGCTGGCTC
 AGACAGCACCAAGCGTAGCCGGTGGATGGAGAAGGCGCTGGGGTGTACCAGTGTGACACAGAGCTGCTG
 GGGCTGTCTGCACAGGACCTCAGAGACCCAGGCTCTGTGATTGTGGCCTTCAAGGAAGGGGAACAGAAGG
 AGAAGGAGGGTATCCTGCAGCTGCGTCGCACCAACTCAGCCAAGCCAGTCCACTGGCACCATCCCTCAT
 GGCCTCTTCTCGACTTCTATCTGTGTGTGGGCAGGTGCCAGCTGGGGTGGGAGTTCTGCAGTGTGAC
 CTGTGTCAAGGACTGGTTCATGGGCAGTGTGTGTCAGTGGCCATCTCCTCACCTCTCAAAGCCAGTC
 TCACTTCACTCCACTGCTAGCCTGGTGGGAATGGGACACAAAATCCTGTGTCCACTGTGTATGCCTC
 ACGACGGCCACGCTAGAGACAATCCTAGCCTTGTGGTGGCCCTGCAGAGGCTGCCCGTGGGGCTGCCT
 GAGGGTGAAGCCCTTCAAGTGTCTCACAGAGAGGGCCATTGGCTGGCAAGACCGTGCAGAAAGGCTCTGG
 CCTCTGAAGATGTGACTGCTCTGTTGCGACAGCTGGCTGAGCTTCGCAACAGCTACAGGCCAAACCCAG
 ACCAGAGGAGGCCCTCAGTCTACACTTACGCCACTGCCTGTGACCCATCAGAGAAGGCAGTGGCAACAAT
 ATTTCTAAGGTCCAAGGGCTGCTGGAGAATGGAGACAGTGTGACCAGTCTGAGAATGGCTCCAGGAA
 AGGGCTCTGACCTGGAGCTACTGCCTCACTGTTGCCGAGTTGACTGGCCCTGTGTTGGAGCTGCCTGA
 GGCAATCCGGGCTCCCTGGAGGAGCTCATGATGGAAGGGGACCTGCTTGAAGTACCCTGGATGAGAAC
 CACAGCATCTGGCAGCTGCTGCAGGCTGGACAGCCTCCAGACCTGGACAGAATTCGCACACTTCTGGAGC
 TGGAAAAATTTGAACATCAAGGGAGTCGGACAAGGAGCCGGGCTCTGGAGAGGCGACGGCCGGCAGAA
 GGTGGATCAGGGTAGAAACGTTGAGAATCTTGTCAACAGGAGCTTCAAGTCAAAAAGGGCTCGGAGCTCA
 GGGATTATGTCTCAGGTGGGCCGAGAAGAAGAACATTATCAGGAGAAAGCAGACCGTGAATAATGTTCC
 TGACACCTTCCACAGACCACAGCCCTTTCTTGAAGGAAACAAAATAGCTTACAACACAAGGATTCAGG
 CTCTTCAAGTGTCTTCTTAAATGCCTTGTGCTACAACACTCTCCTACTCTGATGAGCAACAGTTG

ACGCGTACGCGGCCGCTCGAGCAGAACTCATCTCAGAAGAGGATCTGGCAGCAATGATATCCTGGATT
 ACAAGGATGACGACGATAAGGTTTAA

Protein Sequence: >RC218748 representing NM_004653
 Red=Cloning site Green=Tags(s)

```
MEPGCDEFLPPPECPVFEPSSWAEFQDPLGYIAKIRPIAEKSGICKIRPPADWQPPFAVEVDNFRFTPRVQ
RLNELEAQTRVKLNLYLDQIAKFWEIQGSSLKIPNVERKILDLYLSKIVIEEGGYEAICKDRRWARVAQR
LHYPPGKNIGSLLRSHYERIIYPYEMFQSGANHVQCNTHPFDNEVKDKEYKPHSIPLRQSVQPSKFSYS
RRAKRLQPDPEPTEEDIEKHPELKKLQIYGP GPKMMGLGLMAKDKDKTVHKKVTCPTVTVKDEQSGGGN
VSSTLLKQHLSELPCTKTTMLRKNHSSAQFIDSYICQVCSRGDDEDKLLFCDCGDDNYHIFCLLPPLPE
IPRGIWRCPKCILAECKQPPEAFGFEQATQEYSLQSFGEADSFKSDYFNMPVHMVPTTELVEKEFWRLVS
SIEEDVTVYEGADIHSKEFGSGFPVSNKQNLSPREEKEYATSGWNLNVMPVLDQSVLCHINADISGMKVP
WLYVGMVSAFCWHIEDHWSYSINYLHWGEPKTYGVP SLAAEHL EEVKMLTPELFDSPDLLHLQVTL
MNPNTLM SHGVPVVRTNQ CAGEFVITFP RAYHSGFNQGYNFAEAVNFCTADWLPAGRQCIEHYRRLRRYC
VFSHEELICKMAAFPETLDLNLAVAVHKEMFIMVQEERLRKALLEKGVTEAEREAFELLPDERQCICK
KTTCLF SALACYDCPDGLVCLSHINDLCKCSSSRQYLRYRTLDELPTMLHKLKIRAESFDTWANKVRVA
LEVEDGRKRSFEELRALESEARERRFPNSELLQRLKNCLSEVEACIAQVLGLVSGQVARMPTPQLTTEL
RVLLEQMGSLPCAMHQIGDVKDVL EQVEAYQAEAREALATLPSSPGLLRSLLEERGQQLGVEVPEAHLQQ
QVEQAQWLDEVKQALAPSAHRGSLVIMQGLLVMGAKIASSPSVDKARAEQLLETTIAERWEEKAHFCLEA
RQKHPPATLEAIIRETENIPVHLPNIQALKEALTKAQAWIADVDEIQNGDHYPCLDDLEGLVAVGRDLPV
GLEELRQLELQVLT AHSWREKASKTFLKKNSCYTLLEVLCPCADAGSDSTKRSRWMEKALGLYQCDTELL
GLSAQDLRDPGSVIVAFKEGEQKEKEGILQLRRTNSAKPSPLAPSLMASSPTSICVCGQVPAGVGLQCD
LCQDWFHGQCVSVP HLLTSPKPSLTSSPLLAWEWDTKFLCPLCMRSPRRPRL ETILALLVALQRLPVRLP
EGEALQCLTERAIGWQDRARKALASEDVTALLRQLAELRQQLQAKPRPEEASVYTSATACDP IREGSGNN
ISKVQGLLENGDSVTS PENMAPGKGS DLELLSLLPQLTGPVLELPEAIRAPLEELMMEGDLLLEVTLDEN
HSIWQLLQAGQPPDLDRIRTLLELEKFEHQGSRTRS RALERRRRRQKVDQGRNVENLVQELQSKRARSS
GIMSQVGREEEHYQEKADRENMF LTPSTDHSPFLKGNQNSLQHKDSGSSAACPSLMPLQLLSYSDEQQL
```

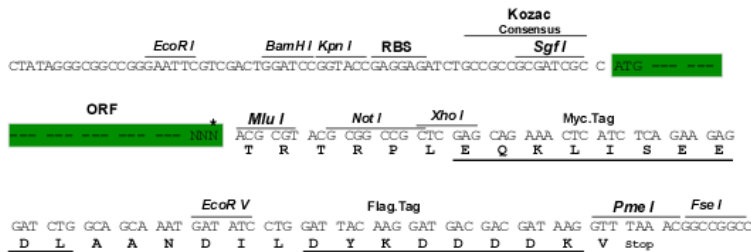
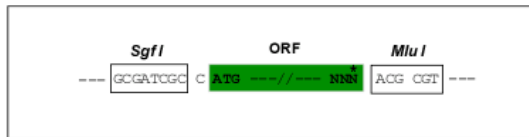
TRTRPLEQKLISEEDLAANDILDYKDDDDKV

Restriction Sites:

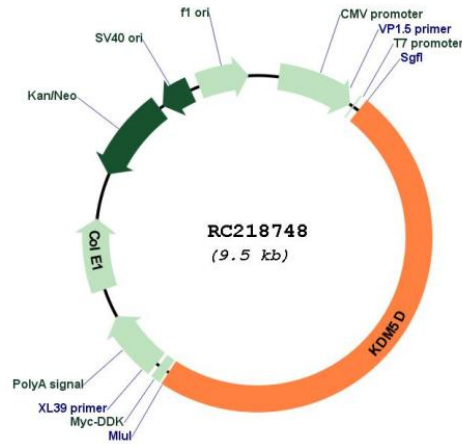
SgfI-MluI

Cloning Scheme:

Cloning sites used for ORF Shuttling:



* The last codon before the Stop codon of the ORF

Plasmid Map:


- ACCN:** NM_004653
- ORF Size:** 4617 bp
- OTI Disclaimer:** The molecular sequence of this clone aligns with the gene accession number as a point of reference only. However, individual transcript sequences of the same gene can differ through naturally occurring variations (e.g. polymorphisms), each with its own valid existence. This clone is substantially in agreement with the reference, but a complete review of all prevailing variants is recommended prior to use. [More info](#)
- OTI Annotation:** This clone was engineered to express the complete ORF with an expression tag. Expression varies depending on the nature of the gene.
- Components:** The ORF clone is ion-exchange column purified and shipped in a 2D barcoded Matrix tube containing 10ug of transfection-ready, dried plasmid DNA (reconstitute with 100 ul of water).

Reconstitution Method:

1. Centrifuge at 5,000xg for 5min.
2. Carefully open the tube and add 100ul of sterile water to dissolve the DNA.
3. Close the tube and incubate for 10 minutes at room temperature.
4. Briefly vortex the tube and then do a quick spin (less than 5000xg) to concentrate the liquid at the bottom.
5. Store the suspended plasmid at -20°C. The DNA is stable for at least one year from date of shipping when stored at -20°C.

RefSeq: [NM_004653.5](#)

RefSeq Size: 5502 bp

RefSeq ORF: 4620 bp

Locus ID: 8284

UniProt ID: [Q9BY66](#)

Cytogenetics: Yq11.223

Domains: ARID, PHD, JmjC, JmjN, zf-C5HC2

Protein Families: Druggable Genome, Transcription Factors

MW: 174.1 kDa

Gene Summary: This gene encodes a protein containing zinc finger domains. A short peptide derived from this protein is a minor histocompatibility antigen which can lead to graft rejection of male donor cells in a female recipient. Alternative splicing results in multiple transcript variants. [provided by RefSeq, Apr 2009]