

## Product datasheet for **RC218744**

### **RNF6 (NM\_183043) Human Tagged ORF Clone**

#### **Product data:**

Product Type:	Expression Plasmids
Product Name:	RNF6 (NM_183043) Human Tagged ORF Clone
Tag:	Myc-DDK
Symbol:	RNF6
Mammalian Cell Selection:	Neomycin
Vector:	pCMV6-Entry (PS100001)
E. coli Selection:	Kanamycin (25 ug/mL)



[View online »](#)

ORF Nucleotide  
Sequence:

>RC218744 representing NM\_183043  
Red=Cloning site Blue=ORF Green=Tags(s)

TTTTGTAATACGACTCACTATAGGGCGGCCGGAATTCGTGACTGGATCCGGTACCGAGGAGATCTGCC  
GCCCGCATCGCC

ATGAATCAGTCTAGATCGAGATCAGATGGTGGCAGTGAAGAAACCTTACCTCAAGACCATAATCATCATG  
AAAATGAGAGAAGATGGCAGCAAGAGCGTCTCCACAGAGAAGAGGCCTATTATCAGTTTATAATGAACT  
CAATGATGAAGATTATCGGCTTATGAGAGACCATAATCTTTTAGCCACCCTGGAGAAAATACATCAGAA  
GAACTGCAACAGCGGTTAGATGGCGTCAAGGAACAACCTAGCATCTCAGCCTGACTTGAGAGATGGAACGA  
ATTACAGAGACTCAGAAGTCCCTAGAGAAAAGTTACATGAAGATTCTTCTAGAATGGTTGAACACCTT  
TCGGCGCACAGGAAAATGCAACTCGAAGTGGACAAAATGGGAACCAAACTTGAGAGCTGTGAGTCAACA  
AACCCGAACAATGGAGAGTTTCGGTTTAGTTGGAAATCCACGTAATCATGAAAATAGAGGATTTGAAA  
TTCATGGAGAAGATTATACAGACATTCCTTTTCCAGATAGTAACAGAGATCATACTGCAAAATAGGCAACA  
AAGGTCAACTAGTCTGTGGCTAGGCGAACAAGAAGCCAAACCTCAGTGAATTTCAATGGTAGTAGTTCC  
AACATTCGAAGGACTAGGCTTGCTTCAAGGGGGCAAAAATCCAGCTGAAGGATCTTTCTCAACATTGGGAA  
GGTTAAGAAAATGGAATGGGGGAGCAGCTGGCATTCTCGAGCTAACGCTTACGCACTAATTTTCAGTAG  
TCACACAAACCAATCAGGTGGTAGTGAACCTCAGGCAAAGGGAGGGGCAACGGTTTGGAGCAGCACATGTT  
TGGGAAAATGGGGCTAGAAGTAATGTTACAGTGAGGAATACAAACCAAAGATTAGAGCCAATAAGATTAC  
GATCTACTTCCAATAGTCGAAGCCGTTCCCAATTCAGAGACAGAGTGGCACTGTTTATCATAATTTCCCA  
AAGGAAAAGTAGACCAGTACAGCAAACCACTAGAAGATCTGTTAGGAGGAGAGGTAGAATCGAGTCTTT  
TTAGAGCAAGATAGAGAACGAGAACGCAGAGGTACTGCATATACCCATTCTCTAATTCAGGCTGTGT  
CAAGAATAACAGTAGAAGAAGGAGAAGAATCCAGCAGATCCTCAACTGCTGTACGACGACATCCAACAAT  
CACACTGGACCTTCAAGTGAGAAGGATCCGTCTGGAGAAAATAGAGATCGGGATAGTATTGCAAAATAGA  
ACTCGATCCAGAGTAGGGCTAGCAGAAAATACAGTCACTATTGAAAGCAATAGTGGGGGCTTTCCGCCGAA  
CCATTTCTCGTTTAGAGCGGTCAGGTATTCGAACCTATGTTAGTACCATAACAGTTCTCTTCGTAGGAT  
TTCTGAGAATGAGCTTGTGAGCCATCATCAGTGGCTCTTCGGTCAATTTAAGGCAGATCATGACTGGG  
TTTGGAGAACTGAGTTCTCTAATGGAGGCCGATTCTGAGTCAGAACTTCAAAGAAAATGGCCAGCATTAC  
CAGACATGCACTCAGAACTGAGTAACTTAGGTACAGATAACAACAGGAGCCAGCAGGGAAGGTTCTCTC  
TCAAGACAGGCAGGCCAAGGAGACAGCACTGAAATGCATGGTAAAACGAGACCACCCAGCCTCATACT  
CGAAACAGTGACAGTAGGGGTGGCAGGCAGTTGCGAAAATCCAACAATTTAGTTGAACTGGAACACTAC  
CCATTTCTCGCCTTGCTCACTTTTTTTTACTAAATGAAAAGTGATGATGATGATCGAATACGTGGTTTAA  
CAAAGAGCAGATTGACAATCTTTCCACCAGGCACTATGAGCATAACAGTATTGATAGTGAAC TAGGTA  
ATCTGTAGTGTGTTGATTAGTACTATGTAAGTGGAAAACAAGCTCAGGCAATTACCTTGATGATGAAT  
TTCACATTCATTGATTGACCGATGGCTCTCAGAGAATTGCACTTGTCGGATCTGTCCGACGCTGTTTT  
AGGGTCTAACATAGCAAACAATGGG

ACGCGTACGCGGCCGCTCGAGCAGAACTCATCTCAGAAGAGGATCTGGCAGCAATGATATCCTGGATT  
ACAAGGATGACGACGATAAGGTTTAA

**Protein Sequence:** >RC218744 representing NM\_183043  
Red=Cloning site Green=Tags(s)

MNQSRSRSDGGSEETLPQDHNHHENERRWQERLHREEAYYQFINELNDEYRLMRDHLLGTPGEITSE  
 ELQQRLDGVKEQLASQPDLRDGTNYRDSEVPRESSHEDSLEWLNTFRRTGNATRSGQNGQNTWRAVSRT  
 NPNNGEFRFSLIEHVNHENRGFEIHGEDYTDIPLSDSNRDHTANRQQRSTSPVARRTRSQTSVNFGSSS  
 NIPRTRLASRGQNPAGEFSSTLGRLRNGIGGAAGIPRANASRTNFSSTNQSGGSELRQREGQRFGAAHV  
 WENGARSNVTVRNTNQRLEPIRLRSTSNRSRSPIQRQSGTVYHNSQRESRPVQQTTRRSVRRRGRTRVF  
 LEQDRERERRGTAYTPFSNSRLVSRITVEEGEESRSSTAVRRHPTITLDLQVRRIRPGENRDRDSIANR  
 TRSRVGLAENTVTIESNSGGFRRTISRLESGIRTYVSTITVPLRRISENELVEPSSVALRSILRQIMTG  
 FGELSSLMEADSESELQRNGQHLPMHSELNLGTDNNRSQHREGSSQDRQAQGDSTEMHGENETTPHT  
 RNSDSRGGRLRPNL VETGTLPLRLAHFLLNESDDDDRIRGLTKEQIDNLSTRHYEHSIDSELGK  
 ICSVCISDYVTGNKLRQLPCMEHFHICIDRWLSENCTPICRQPVLGSNIANNG

TRTRPLEQKLISEEDLAANDILDYKDDDDKV

**Chromatograms:** [https://cdn.origene.com/chromatograms/mk6325\\_c04.zip](https://cdn.origene.com/chromatograms/mk6325_c04.zip)

**Restriction Sites:** SgfI-MluI

**Cloning Scheme:**



**ACCN:** NM\_183043

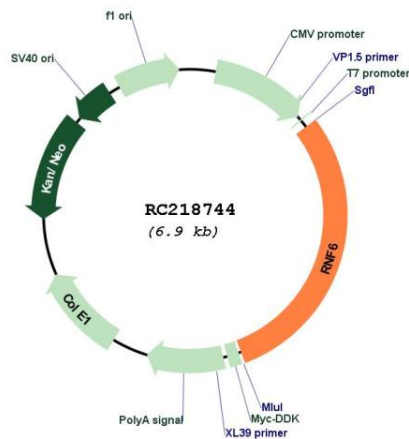
**ORF Size:** 2055 bp

**OTI Disclaimer:** The molecular sequence of this clone aligns with the gene accession number as a point of reference only. However, individual transcript sequences of the same gene can differ through naturally occurring variations (e.g. polymorphisms), each with its own valid existence. This clone is substantially in agreement with the reference, but a complete review of all prevailing variants is recommended prior to use. [More info](#)

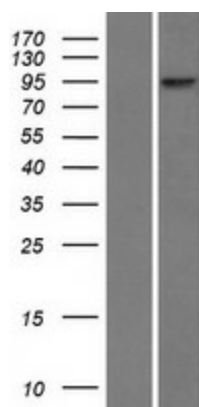
**OTI Annotation:** This clone was engineered to express the complete ORF with an expression tag. Expression varies depending on the nature of the gene.

<b>Components:</b>	The ORF clone is ion-exchange column purified and shipped in a 2D barcoded Matrix tube containing 10ug of transfection-ready, dried plasmid DNA (reconstitute with 100 ul of water).
<b>Reconstitution Method:</b>	<ol style="list-style-type: none"> <li>1. Centrifuge at 5,000xg for 5min.</li> <li>2. Carefully open the tube and add 100ul of sterile water to dissolve the DNA.</li> <li>3. Close the tube and incubate for 10 minutes at room temperature.</li> <li>4. Briefly vortex the tube and then do a quick spin (less than 5000xg) to concentrate the liquid at the bottom.</li> <li>5. Store the suspended plasmid at -20°C. The DNA is stable for at least one year from date of shipping when stored at -20°C.</li> </ol>
<b>RefSeq:</b>	<u>NM_183043.2</u>
<b>RefSeq Size:</b>	3284 bp
<b>RefSeq ORF:</b>	2058 bp
<b>Locus ID:</b>	6049
<b>UniProt ID:</b>	<u>Q9Y252</u>
<b>Cytogenetics:</b>	13q12.13
<b>Protein Families:</b>	Druggable Genome
<b>MW:</b>	77.9 kDa
<b>Gene Summary:</b>	The protein encoded by this gene contains a RING-H2 finger motif. Deletions and mutations in this gene were detected in esophageal squamous cell carcinoma (ESCC), suggesting that this protein may be a potential tumor suppressor. Studies of the mouse counterpart suggested a role of this protein in the transcription regulation that controls germinal differentiation. Multiple alternatively spliced transcript variants encoding the same protein are observed. [provided by RefSeq, Jul 2008]

### Product images:



Circular map for RC218744



Western blot validation of overexpression lysate (Cat# [LY405215]) using anti-DDK antibody (Cat# [TA50011-100]). Left: Cell lysates from untransfected HEK293T cells; Right: Cell lysates from HEK293T cells transfected with [RC218802] using transfection reagent MegaTran 2.0 (Cat# [TT210002]).