

Product datasheet for **RC218736**

SLC34A2 (NM_006424) Human Tagged ORF Clone

Product data:

Product Type:	Expression Plasmids
Product Name:	SLC34A2 (NM_006424) Human Tagged ORF Clone
Tag:	Myc-DDK
Symbol:	SLC34A2
Synonyms:	NAPI-3B; NAPI-IIb; NPTIIb; PULAM
Mammalian Cell Selection:	Neomycin
Vector:	pCMV6-Entry (PS100001)
E. coli Selection:	Kanamycin (25 ug/mL)



[View online »](#)

ORF Nucleotide
Sequence:

>RC218736 representing NM_006424.

Blue=ORF Red=Cloning site Green=Tag(s)

```
GCTCGTTAGTGAACCGTCAGAATTTTGTAAACGACTCACTATAGGGCGGCCGGGAATTCGTGACTG
GATCCGGTACCGAGGAGATCTGCCGCCCGCATCGCC
ATGGCTCCCTGGCCTGAATTGGGAGATGCCAGCCCAACCCCGATAAGTACCTCGAAGGGGCCGAGGT
CAGCAGCCCACTGCCCTGATAAAAAGCAAAGAGACCAACAAAACAGATAACACTGAGGCACCTGTAACC
AAGATTGAACTTCTGCCGTCTACTCCACGGCTACACTGATAGATGAGCCCACTGAGGTGGATGACCCC
TGGAACTACCCACTCTTCAGGACTCGGGGATCAAGTGGTCAGAGAGAGACCAAAGGGGAAGATTCTC
TGTTTCTTCCAAGGGATTGGGAGATTGATTTTACTTCTCGGATTCTCTACTTTTTCTGTGTCTCCCTG
GATATTCTTAGTAGCGCCTTCCAGCTGGTTGGAGGAAAAATGGCAGGACAGTTCTTCAGCAACAGCTCT
ATTATGTCCAACCTTTGTTGGGCTGGTATCGGGGTGCTGGTACCGTCTTGGTGCAGAGCTCCAGC
ACCTCAACGTCCATCGTTGTCAGCATGGTGTCTTTCATTGCTCACTGTTGGGCTGCCATCCCCATT
ATCATGGGGCCAAACATTGGAACGTCAATCACCAACACTATTGTTGCGCTCATGCAGGTGGGAGATCGG
AGTGAGTTCAGAAGAGCTTTTGCAGGAGCCACTGTCCATGACTTCTTCAACTGGCTGTCCGTGTTGGTG
CTTTGCCCGTGGAGGTGCCACCCATTACCTCGAGATCATAACCCAGCTTATAGTGGAGAGCTTCCAC
TTCAAGAATGGAGAAGATGCCCCAGATCTTCTGAAAGTCATCACTAAGCCCTTCAAAAAGCTCATTGTC
CAGCTGGATAAAAAAGTTATCAGCCAAATTGCAATGAACGATGAAAAAGCGAAAAACAAGAGTCTTGTC
AAGATTTGGTGCAAAACTTTTACCAACAAGACCCAGATTAACGTCACCTGTTCCCTCGACTGCTAACTGC
ACCTCCCCTTCCCTCTGTTGGACGGATGGCATCCAAAACCTGGACCATGAAGAATGTGACCTACAAGGAG
AACATCGCAAAATGCCAGCATATCTTTGTGAATTTCCACCTCCCGGATCTTGCTGTGGGCACCATCTTG
CTCATACTCTCCCTGCTGGTCTCTGTGGTTGCCTGATCATGATTGTCAAGATCCTGGGCTCTGTGCTC
AAGGGGCAGGTGCCACTGTCAAGAAAGACCATCAACACTGATTTCCCTTTCCCTTTGTCATGGTTG
ACTGGCTACCTGGCCATCCTCGTCGGGGCAGGCATGACCTTCATCGTACAGAGCAGCTCTGTGTTACG
TCGGCCTTGACCCCTGATTGGAATCGCGTGATAAACCATTGAGAGGGCTTATCCACTCACGCTGGGC
TCCAACATCGGCACCACCACCACCACCCTGCGCCTTAGCCAGCCCTGGCAATGCATTGAGGAGT
TCACTCCAGATCGCCCTGTGCCACTTTTTCTTCAACATCTCCGGCATCTTGCTGTGGTACCCGATCCCG
TTCCTCGCCTGCCATCCGCATGGCCAAGGGGCTGGCAACATCTTGCCAAGTATCGCTGGTTCGCC
GTCTTCTACCTGATCATCTTCTTCTTCTGATCCCGCTGACGGTGTGGCCTCTCGCTGGCCGGCTGG
CGGGTGTGGTTGGTGTGGGGTCCCCTGCTTTCATCATCATCCTGGTACTGTGCTCCGACTCCTG
CAGTCTCGCTGCCACGCTCCTGCCAAGAACTCCAGAAGTGAAGTCTCCTGCCGCTGTGGATGCGC
TCGCTGAAGCCCTGGGATGCCGTCTCCAAGTTCACCGGCTGCTTCCAGATGCCGCTGCTGCTGCTGC
TGCCGCTGTGCTGCCGCGCTGCTGCTTGTGTGGCTGCCCAAGTGTGCCGCTGCAGCAAGTGC
TGCGAGGACTTGAGGAGGCGCAGGAGGGGAGGATGTCCCTGTCAAGGCTCCTGAGACCTTTGATAAC
ATAACCATTAGCAGAGAGGCTCAGGGTGAAGTCCCTGCCGACTCAAAGACCGAATGCACGGCCTTG
AGCGGACCGACGCGTACGCGGCCGCTCGAGCAGAACTCATCTCAGAAGAGGATCTGGCAGCAATGAT
ATCCTGGATTACAAGGATGACGACGATAAGGTTTAA
```

Protein Sequence: >Peptide sequence encoded by RC218736
 Blue=ORF Red=Cloning site Green=Tag(s)

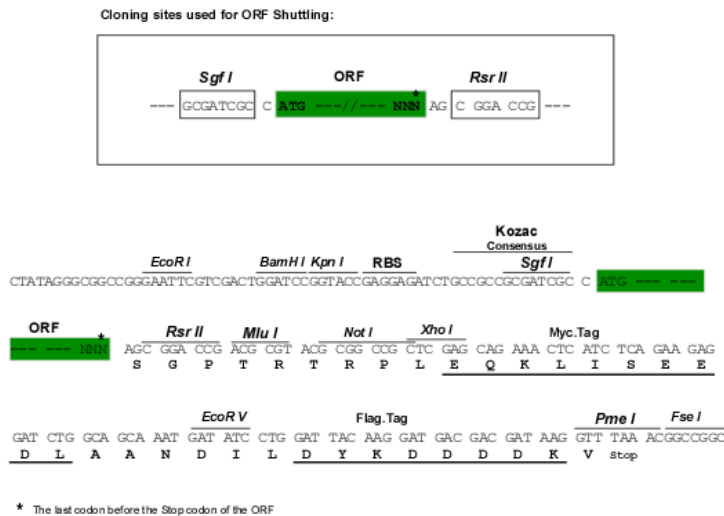
MAPWPELGDAQPNPKYLEGAAGQQPTAPDKSKETNKTDNTEAPVTKIELLPSYSTATLIDEPTEVDDP
 WNLPTLQDSGIKWSERDTKGKILCFFQIGRILLGLFLYFFVCSLDILSSAFQLVGGKMAGQFFSNSS
 IMSNPLGLVIGLVTVLVVQSSSTSTSIIVSMVSSLLTVRAAIPIMGANIGTSITNTIVALMQVGDR
 SEFRRAFAGATVHDFFNWLSVLLPVEVATHYLEIITQLIVESFHFKNGEDAPDLLKVIITKPFKLIIV
 QLDKKVISQIAMNDEKAKNKSIVKIWCKFTNKQINVTVPSTANCTSPSLCWTGDIQNWTKMKNVYKE
 NIAKQCQHIFVNFHLPDLAVGTILLILSLLVLCGCLIMIVKILGSVLKGQVATVIKKTINTDFPFFAWL
 TGYLAIVGAGMTFIVQSSSVFTSALPLIGIGVITIERAYPLTLGNSIGTTTTAILAALASPGNALRS
 SLQIALCHFFFNISGILLWYPIPFTRLPIRMAGLGNISAKYRWFVYFLIIFFFLIPLTVFGLSLAGW
 RVLVGVGVPVVFIIILVLCRLQLSRCPVLPKQLQNWFLPLWMSLKPWDAVSKFTGCFQMRCCCC
 CRVCCRACLLCGCPKCCRCCKCEDLEEAQEQDVPVKAPETFDNITISREAQGEVPASDSKTECTAL
 SGPTRTRPLEQKLISEEDLAANDILDYKDDDDKV

Recombinant protein using RC218736 also available, [TP318736](#)

Chromatograms: https://cdn.origene.com/chromatograms/mk6184_b06.zip

Restriction Sites: SgfI-RsrII

Cloning Scheme:



ACCN: NM_006424

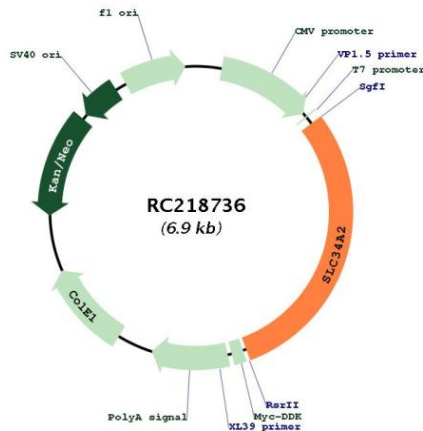
ORF Size: 2079 bp

OTI Disclaimer: The molecular sequence of this clone aligns with the gene accession number as a point of reference only. However, individual transcript sequences of the same gene can differ through naturally occurring variations (e.g. polymorphisms), each with its own valid existence. This clone is substantially in agreement with the reference, but a complete review of all prevailing variants is recommended prior to use. [More info](#)

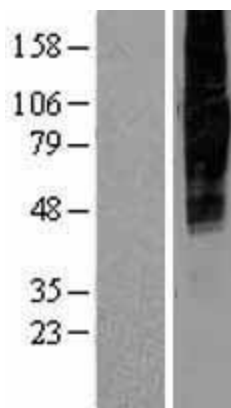
OTI Annotation: This clone was engineered to express the complete ORF with an expression tag. Expression varies depending on the nature of the gene.

- Components:** The ORF clone is ion-exchange column purified and shipped in a 2D barcoded Matrix tube containing 10ug of transfection-ready, dried plasmid DNA (reconstitute with 100 ul of water).
- Reconstitution Method:**
1. Centrifuge at 5,000xg for 5min.
 2. Carefully open the tube and add 100ul of sterile water to dissolve the DNA.
 3. Close the tube and incubate for 10 minutes at room temperature.
 4. Briefly vortex the tube and then do a quick spin (less than 5000xg) to concentrate the liquid at the bottom.
 5. Store the suspended plasmid at -20°C. The DNA is stable for at least one year from date of shipping when stored at -20°C.
- RefSeq:** [NM_006424.2](#)
- RefSeq Size:** 2280 bp
- RefSeq ORF:** 2073 bp
- Locus ID:** 10568
- UniProt ID:** [O95436](#)
- Cytogenetics:** 4p15.2
- Protein Families:** Transmembrane
- MW:** 75.7 kDa
- Gene Summary:** The protein encoded by this gene is a pH-sensitive sodium-dependent phosphate transporter. Phosphate uptake is increased at lower pH. Defects in this gene are a cause of pulmonary alveolar microlithiasis. Three transcript variants encoding two different isoforms have been found for this gene. [provided by RefSeq, May 2010]

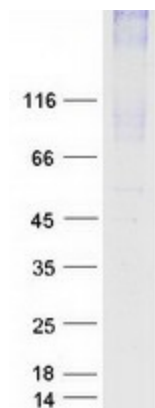
Product images:



Circular map for RC218736



Western blot validation of overexpression lysate (Cat# [LY401933]) using anti-DDK antibody (Cat# [TA50011-100]). Left: Cell lysates from untransfected HEK293T cells; Right: Cell lysates from HEK293T cells transfected with RC218736 using transfection reagent MegaTran 2.0 (Cat# [TT210002]).



Coomassie blue staining of purified SLC34A2 protein (Cat# [TP318736]). The protein was produced from HEK293T cells transfected with SLC34A2 cDNA clone (Cat# RC218736) using MegaTran 2.0 (Cat# [TT210002]).