

Product datasheet for **RC218732**

OBP2B (NM_014581) Human Tagged ORF Clone

Product data:

Product Type: Expression Plasmids
Product Name: OBP2B (NM_014581) Human Tagged ORF Clone
Tag: Myc-DDK
Symbol: OBP2B
Synonyms: LCN14; OBPIIb
Mammalian Cell Selection: Neomycin
Vector: pCMV6-Entry (PS100001)
E. coli Selection: Kanamycin (25 ug/mL)
ORF Nucleotide Sequence: >RC218732 ORF sequence
Red=Cloning site Blue=ORF Green=Tags(s)

TTTTGTAATACGACTCACTATAGGGCGCCGGGAATTCGTCGACTGGATCCGGTACCGAGGAGATCTGCC
GCC**CGATCGCC**

ATGAAGACCCGTCTCCTGGGTGTCACGCTCGGCCCTGGCCGCTGCCCTGTCTTCACCTGGAGGAGGAGG
ATATCACAGGGACCTGGTACGTGAAGGCCATGGTGGTCGATAAGGACTTCCGGAGGACAGGAGGCCAG
GAAGGTGTCCCCAGTGAAGGTGACAGCCCTGGGCGGTGGGAAGTTGGAAGCCACGTTACCTTCATGAGG
GAGGATCGGTGCATCCAGAAGAAAATCCTGATGCGGAAGACGGAGGAGCCTGGCAAATACAGCCCTATG
GGGCAGGAAGCTCATGTACCTGCAGGAGCTGCCAGGAGGGACCACTACATCTTTACTGCAAAGACCA
GCACCATGGGGCCTGTCCACATGGGAAAGCTTGTGGTAGGAATTCTGATACCAACCGGAGGCCCTG
GAAGAATTTAAGAAATTGGTGCAGCGCAAGGGACTCTCGGAGGAGGACATTTTCACGCCCTGCAGACGG
GAAGCTGCGTTCCCGAACAC

ACGCGTACGCGGCCGCTCGAGCAGAACTCATCTCAGAAGAGGATCTGGCAGCAAATGATATCCTGGATT
ACAAGGATGACGACGATAAGGTTTAA

Protein Sequence: >RC218732 protein sequence
Red=Cloning site Green=Tags(s)

MKTLFLGVTLGLAAALSFTLEEEDITGTWYVKAMVVDKDFPEDRRPRKVPVKVVALGGGKLEATFTFMR
EDRCIQKKILMRKTEEPGKYSA YGGRKLMYLQELPRRDHYIFYCKDQHHGGLLHMGLKLVGRNSDTNREAL
EEFKKL VQRKGLSEEDIF TPLQTGSCVPEH

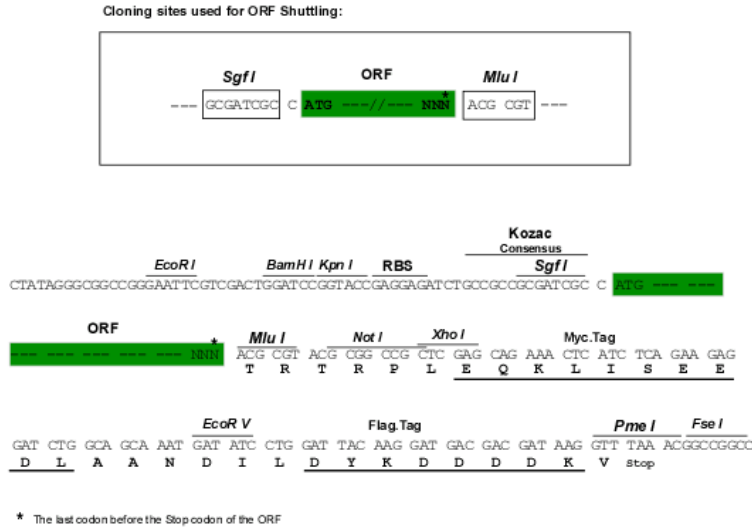
TRTRPLEQKLISEEDLAANDILDYKDDDDKV

Chromatograms: https://cdn.origene.com/chromatograms/mk6450_h02.zip



Restriction Sites: SgfI-MluI

Cloning Scheme:



ACCN: NM_014581

ORF Size: 510 bp

OTI Disclaimer: The molecular sequence of this clone aligns with the gene accession number as a point of reference only. However, individual transcript sequences of the same gene can differ through naturally occurring variations (e.g. polymorphisms), each with its own valid existence. This clone is substantially in agreement with the reference, but a complete review of all prevailing variants is recommended prior to use. [More info](#)

OTI Annotation: This clone was engineered to express the complete ORF with an expression tag. Expression varies depending on the nature of the gene.

Components: The ORF clone is ion-exchange column purified and shipped in a 2D barcoded Matrix tube containing 10ug of transfection-ready, dried plasmid DNA (reconstitute with 100 ul of water).

Reconstitution Method:

1. Centrifuge at 5,000xg for 5min.
2. Carefully open the tube and add 100ul of sterile water to dissolve the DNA.
3. Close the tube and incubate for 10 minutes at room temperature.
4. Briefly vortex the tube and then do a quick spin (less than 5000xg) to concentrate the liquid at the bottom.
5. Store the suspended plasmid at -20°C. The DNA is stable for at least one year from date of shipping when stored at -20°C.

RefSeq: [NM_014581.2](#), [NP_055396.1](#)

RefSeq Size: 708 bp

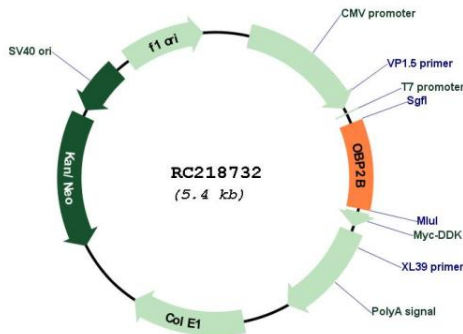
RefSeq ORF: 513 bp

Locus ID: 29989

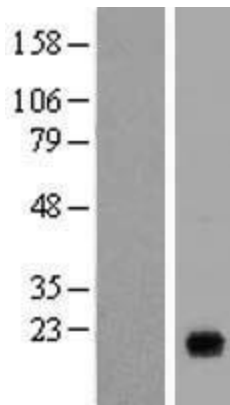
UniProt ID: [Q9NPH6](#)

Cytogenetics: 9q34.2
Protein Families: Secreted Protein
MW: 19.5 kDa
Gene Summary: Probably binds and transports small hydrophobic volatile molecules.[UniProtKB/Swiss-Prot Function]

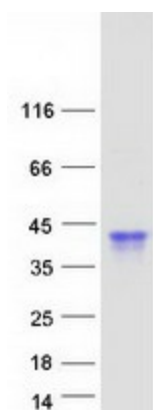
Product images:



Circular map for RC218732



Western blot validation of overexpression lysate (Cat# [LY415181]) using anti-DDK antibody (Cat# [TA50011-100]). Left: Cell lysates from untransfected HEK293T cells; Right: Cell lysates from HEK293T cells transfected with RC218732 using transfection reagent MegaTran 2.0 (Cat# [TT210002]).



Coomassie blue staining of purified OBP2B protein (Cat# [TP318732]). The protein was produced from HEK293T cells transfected with OBP2B cDNA clone (Cat# RC218732) using MegaTran 2.0 (Cat# [TT210002]).