

Product datasheet for RC218730

Phospholipase A2 (PLB1) (NM_153021) Human Tagged ORF Clone

Product data:

Product Type:	Expression Plasmids
Product Name:	Phospholipase A2 (PLB1) (NM_153021) Human Tagged ORF Clone
Tag:	Myc-DDK
Symbol:	Phospholipase A2
Synonyms:	PLB; PLB/LIP
Mammalian Cell Selection:	Neomycin
Vector:	pCMV6-Entry (PS100001)
E. coli Selection:	Kanamycin (25 ug/mL)
ORF Nucleotide Sequence:	>RC218730 representing NM_153021 Red=Cloning site Blue=ORF Green=Tags(s)

TTTTGTAATACGACTCACTATAGGGCGGCCGGAATTCGTCGACTGGATCCGGTACCGAGGAGATCTGCC
GCC**CGATCGCC**

ATGGGGCTGCGGCCAGGCATTTTCCTCCTGGAGCTGCTGCTGCTTCTGGGGCAAGGGACCCCTCAGATCC
ATACCTCTCTAGAAAGAGTACATTGGAAGGGCAGCTATGGCCAGAGACCCTGAAGAATTCTCCATTCCC
ATGCAACCCAAATAAATTAGGAGTGAATATGCCTTCTAAATCAGTTCACCTCTCTGAAGCCTTCTGATATT
AAATTTGTGGCAGCCATTGGCAATCTGGAATTCCTCCAGACCCAGGGACGGCGATCTGGAGAAGCAAG
ACTGGACTGAAAGGCCACAGCAGGTGTGCATGGGAGTGATGACAGTCCTTTCAGACATCATCAGATATTT
CAGTCCTTCTGTTCCAATGCCTGTGTGCCACACTGGAAAGAGAGTCATACCCACGATGGTGTGAAGAC
TTGTGGATTACAGGCTCAAGAAGCTGGTGAGAAACATGAAAGAGAACCTGCAACTTGACTTTCAATTTGACT
GGAAGCTCATCAATGTGTTCTTCAGTAATGCAAGCCAGTGTACCTGTGCCCTCTGCTCAACAGAATGG
GCTTGGCGCGGGCGGCGTGGATGAGCTGATGGGGTGTGGACTACCTGCAGCAGGAGGTCCCAGAGCA
TTTGTAACCTGGTGGACCTCTCTGAGGTTGCAGAGGTCTCTCGTCAGTATCACGGCACTTGCTCAGCC
CTGCACCAGAGCCCTGTAATTGCTCAGAGGAGACCACCCGGCTGGCAAGGTGGTATGCAGTGGTCTTA
TCAGGAAGCCTGGAACAGCCTCCTGGCCTCCAGCAGGTACAGTGAGCAGGAGTCCCTCACCGTGGTTTTTC
CAGCCTTTCTTCTATGAGACCACCCATCTCTACACTCGGAGGACCCCGACTCCAGGATCTACCACGC
TGGCCTGGCATCTCTGGAATAGGATGATGGAGCCAGCAGGAGAGAAAGATGAGCCATTGAGTGAAAACA
CGGGAGGCCAATGAAGTGTCCCTCTCAGGAGAGCCCTATCTGTTGAGCTACAGAAAACAGCAACTACCTG
ACCAGACTGCAGAAACCCCAAGACAAGCTTGAAGTAAGAGAAGGAGCGGAAATCAGATGCTCTGACAAAAG
ACCCCTCCGATACGGTCCACCTCAGTTCATAGGCTGAAGCCGGCTGACATCAACGTAATTGGAGCCCT
GGGTGACTCTCTACGGCAGGCAATGGGGCCGGTCCACACCTGGGAACGTCTTGGACGTCTTGACTCAG
TACCGAGGCTGTCTGGAGCGTCGGCGGAGATGAGAACATCGGCACCGTTACCACCTGGCGAACATCC
TCCGGGAATCAACCCTCCCTGAAGGGCTTCTCTGTTGGCACTGGGAAAGAAACCAGTCTAATGCCTT
CTTAAACCAGGCTGTGGCAGGAGGCCGAGCTGAGGATCTACCTGTCCAGGCCAGGAGGCTGGTGGACCTG



[View online >](#)

ATGAAGAATGACACGAGGATACACTTTCAGGAAGACTGGAAGATAATAACCCTGTTTATAGGCGGCAATG
ACCTCTGTGATTTCTGCAATGATCTGGTCCACTATTCTCCCAGAACTTCACAGACAACATTGGAAAGGC
CCTGGACATCCTCCATGCTGAGGTTCTCGGGCATTGTGAACCTGGTGACGGTGCTTGAGATCGTCAAC
CTGAGGGAGCTGTACCAGGAGAAAAAGTCTACTGCCAAGGATGATCCTCAGGTCTCTGTGTCCCTGTG
TCCTGAAGTTTGATGATAACTCAACAGAAGTCTGCTACCCTCATCGAATTCACAAGAAGTTTCAGGAGAA
GACCCACCAACTGATTGAGAGTGGGCGATATGACACAAGGGAAGATTTACTGTGGTTGTGCAGCCGTTT
TTTGAAAACGTGGACATGCCAAAGACTCGGAAGGATTGCCTGACAACCTTTTCTCGCTCCTGACTGTT
TCCACTTCAGCAGCAAGTCTCACTCCCAGCAGCCAGTGTCTCTGGAACAATATGCTGGAGCCTGTTGG
CCAGAAGACGACTCGTCATAAGTTTGAAAAACAAGATCAATATCACATGTCCGAACCAGGTCCAGCCGTTT
CTGAGGACCTACAAGAACAGCATGCAGGGTCTGAGGACCTGGCTGCCATGCAGGGACAGAGCCCCTCTG
CCTTGACCCCTACCTCAGTGCATGCCCTGAGACCTGCAGACATCCAAGTTGTGGCTGCTCTGGGGGATTC
TCTGACCCTGGCAATGGAATTGGCTCCAAACCAGACGACCTCCCAGTGTACCACACAGTATCGGGGA
CTGTACATACAGTGCAGGAGGGGACGGCTCCCTGGAGAATGTGACCACCTTACCTAATATCCTTGGGAGT
TTAACAGAAACCTCACAGGCTACGCCGTGGGCACGGGTGATGCCAATGACACGAATGCATTCCTCAATCA
AGCTGTTCCCGGAGCAAAGGCTGAGGATCTTATGAGCCAAGTCCAACTCTGATGCAGAAGATGAAAGAT
GATCATAGAGTAAATTTCCATGAAGACTGGAAGTGCATCACAGTGTGATCGGAGGCAGGATTTATGTG
ACTACTGCACAGATTCGAATCTGTATTCTGCAGCCAACCTTTGTTGACCATCTCCGCAATGCCTTGGACGT
CCTGCATAGAGAGGTGCCAGAGTCTGGTCAACCTCTGGGACTTCTGAACCCACTATCATGCGGCAG
GTGTTCTGGGAAACCCAGACAAGTGCCAGTGCAGCAGGCCAGCGTTTTGTGTAAGTGCCTTCTGACCC
TGCGGGGAGAACTCCAAAGAGCTAGCCAGGCTGGAGGCCTTCAGCCGAGCCTACCGGAGCAGCATGCGCGA
GCTGGTGGGGTCAGGCCGCTATGACACGCAGGAGGACTTCTGTGGTGTGCAGCCCTTCTCCAGAAC
ATCCAGTCCCTGTCTGGCGGATGGGCTCCAGATACGTCTTCTTTGCCAGACTGCATCCACCCAA
ATCAGAAATCCACTCCAGCTGGCCAGAGCCCTTTGGACCAATGCTTGAACCAATGCTTGAACCAAAAC
AGAGACCCTGGACCTGAGAGCAGAGATGCCATCACCTGTCCCAGTCAAGATGAGCCCTTCTGAGAAC
CCTCGGAATAGTAACTACACGTACCCATCAAGCCAGCCATTGAGAACTGGGGCAGTGACTTCTGTGTA
CAGAGTGAAGGCTTCCAATAGTGTTCACACTGTGCCACCAGCTCCGACCAGCAGACATCAAAGTGGT
GGCCGCCCTGGGTGACTCTGACTACAGCAGTGGGAGCTCGACCAAACTCCAGTGACCTACCCACA
TCTTGGAGGGGACTCTTGGAGCATTGGAGGGGATGGGAACTTGGAGACTCACACCACACTGCCAAACA
TTCTGAAGAAGTTCAACCCTTACCTCCTGGCTTCTCTACCAGCACCTGGGAGGGGACAGCAGGACTAAA
TGTGGCAGCGGAAGGGCCAGAGCTAGGGACATGCCAGCCAGGCTGGGACCTGGTAGAGCGAATGAAA
AACAGCCCGACATCAACCTGGAGAAAGACTGGAAGCTGGTCAACTCTTATTGGGGTCAACGACTTGT
GTCACTACTGTGAGAATCCGGAGGCCACTTGGCCACGGAATATGTTTCCAGCATCCAACAGGCCCTGGA
CATCCTCTCTGAGGAGCTCCCAAGGGCTTTCGTCAACGTGGTGGAGGTCATGGAGCTGGCTAGCCTGTAC
CAGGGCCAAGGCGGGAAATGTGCCATGCTGGCAGCTCAGAACTGCACCTTGCCTCAGACACTCGCAAA
GCTCCCTGGAGAAGCAAGAACTGAAGAAAGTGAAGTGAACCTCCAGCATGGCATCTCCAGTTTCTCCTA
CTGGCACCAATACACACAGCGTGAGGACTTTCGGTGTGGTGCAGCCTTCTTCCAAAACACACTCACC
CCACTGAACGAGAGAGGGGACACTGACCTCACCTTCTTCCGAGGACTGTTTTCACTTCTCAGACCCGG
GGCATGCCGAGATGGCCATCGCACTCTGGAACAACATGCTGGAACCAAGTGGCCGCAAGACTACCTCAA
CAACTTCAACCACAGCCGAGCCAACTCAAGTCCCCTCTCTGAGAGCCCTTACCTCTACACCCTGCGG
AACAGCCGATTGCTCCCAGACCAGGCTGAAGAAGCCCGAGGTGCTCTACTGGGCTGTCCAGTGGCAG
CGGGAGTCGGCCTTGTGGTGGGCATCATCGGGACAGTGGTCTGGAGGTGCAGGAGAGGTGGCCGGAGGGA
AGATCCTCCAATGAGCCTGCGCACTGTGCCCTC

ACGCGTACGCGGGCGCTCGAGCAGAACTCATCTCAGAAGAGGATCTGGCAGCAATGATATCCTGGATT
ACAAGGATGACGACGATAAGGTTTAA

Protein Sequence: >RC218730 representing NM_153021
 Red=Cloning site Green=Tags(s)

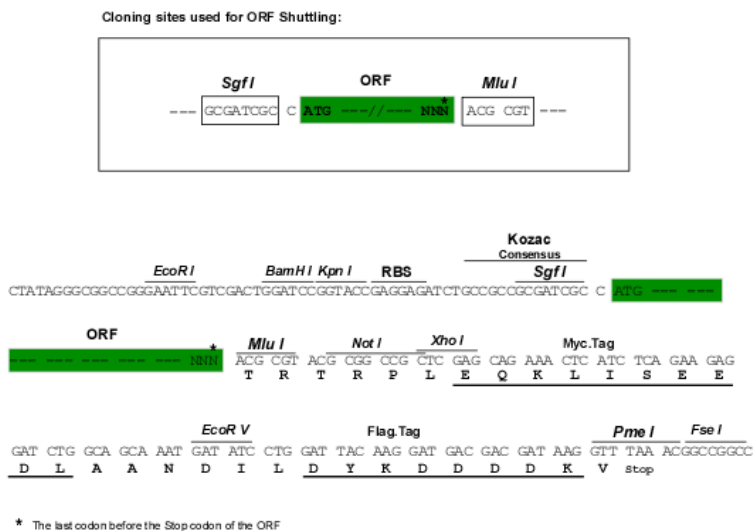
MGLRPGIFLLELLLLLGGQTPQIHTSPRKSTLEGQLWPETLKNSPFPCPNKLGVNMPKSVHSLKPSDI
 KFVAAIGNLEIPDPGTGLEKQDWTERTPQQVCMGVMTVLSDIIRYFSPSVPMPVCHTGRKRVIPHDGAED
 LWIQAQELVRNMKENLQLDFQFDWKLINVFFSNASQCYLCPASQONGLAAGGVDELMDGLDYLQEQVPR
 FVNLVDLSEVAEVSRYHGTWLSPAPEPCNCSEETTRLAKVVMQWYSYQEAWNSSLASSRYSEQESFTVVF
 QPFFYETTPSLHSEDPRLQDSTTLAWHLWNRMMEPAGEKDEPLSVKHGRPMKCPSEQESPYLFSYRNSNYL
 TRLQKPQDKLEVREGAEIRCPDKDPSDTVPTSVHRLKPADINVIAGLGDSTAGNGAGSTPGNVLVDLVTQ
 YRGLSWSVGGDENIGTVTTLANILREFNPSLKGFSVGTGKETSPNAFLNQAVAGGRAEDLPVQARRLVDL
 MKNDTRIFHQEDWKIITLFIGGNDLCDFCNLHVHYPQNFQDNIGKALDILHAEPVRAFVNLTVEIVN
 LRELYQEKKVYCPRMILRSLCPCVLKFDNDELATLIEFNKKFQEKTHQLIESGRYDTREDFTVVQPF
 FENVMPKTSGLPDNSFFAPDCFHFSSKSHSRAASALWNNMLEPVGQKTRHKFENKINITCPNQVQPF
 LRITYKNSMQGHGTWLPDRAPSAHPTSVHALRPADIQVVAALGDSL TAGNGIGSKPDDL PDVTTQYRG
 LSY SAGDGSLENTTLPNILREFNRNL TGYAVGTGDANDTNAFLNQAVPGAKAEDLMSQVQTLMQKMKD
 DHRVNFHEDWKVITVLIGGSDLCDYCTDSNL YSAANFVDHLRNALDVLHREVPVRLVNLVDFLNPITMRQ
 VFLGNPDKCPVQASVLCNCVLTRENSQELARLEAFSRA YRSMREL VGSGRYDTQEDFSVVLQPFQFN
 IQLPVLADGLPDT SFFAPDCIHPNQKFHSQLARALWNNMLEPLGSKTETL DLRAEMPITCPTQNEPFLRT
 PRNSNYTYIPKPAIENWGSDFLCTEWKASNSVPTSVHQLRPADIKVVAALGDSL TTAVGARPNSSDLP
 SWRGLSWSIGGDGNLEHTHTLTPNILKKNFNPYLLGFSTSTWEGTAGLNVAE GARARDMPAQAWDLVERMK
 NSPDINLEKDWKLVTLFIGVNDLCHYCNPEAHLATEYVQHIQQALDILSEELPRA FVNVVEMELASLY
 QGGGKCAMLAAQNNCTCLRHSQSLEKQELKKNVWNLQHGISSF SYWHQYTRQEDFAVVVQPFQNTLT
 PLNERGDTDLTFFSEDCFHFSDRGHAEMAIALWNNMLEPVGRKTTSNNTHSRAKLKCPSPESPYLYTLR
 NSRLLPDQAEAEPEVLYWAVPVAAGVGLVVGIIIGTVVWRCRRGRREDPPMSLRVTAL

TRTRPLEQKLISEEDLAANDILDYKDDDDKV

Chromatograms: https://cdn.origene.com/chromatograms/mk8012_f05.zip

Restriction Sites: SgfI-MluI

Cloning Scheme:

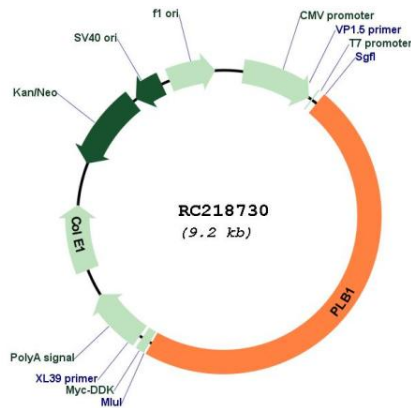


ACCN: NM_153021

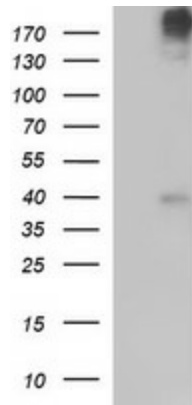
ORF Size: 4374 bp

OTI Disclaimer:	The molecular sequence of this clone aligns with the gene accession number as a point of reference only. However, individual transcript sequences of the same gene can differ through naturally occurring variations (e.g. polymorphisms), each with its own valid existence. This clone is substantially in agreement with the reference, but a complete review of all prevailing variants is recommended prior to use. More info
OTI Annotation:	This clone was engineered to express the complete ORF with an expression tag. Expression varies depending on the nature of the gene.
Components:	The ORF clone is ion-exchange column purified and shipped in a 2D barcoded Matrix tube containing 10ug of transfection-ready, dried plasmid DNA (reconstitute with 100 ul of water).
Reconstitution Method:	<ol style="list-style-type: none">1. Centrifuge at 5,000xg for 5min.2. Carefully open the tube and add 100ul of sterile water to dissolve the DNA.3. Close the tube and incubate for 10 minutes at room temperature.4. Briefly vortex the tube and then do a quick spin (less than 5000xg) to concentrate the liquid at the bottom.5. Store the suspended plasmid at -20°C. The DNA is stable for at least one year from date of shipping when stored at -20°C.
Note:	Plasmids are not sterile. For experiments where strict sterility is required, filtration with 0.22um filter is required.
RefSeq:	NM_153021.3 , NP_694566.3
RefSeq Size:	5063 bp
RefSeq ORF:	4377 bp
Locus ID:	151056
UniProt ID:	Q6P1J6
Cytogenetics:	2p23.2
Protein Families:	Transmembrane
MW:	162.9 kDa
Gene Summary:	This gene encodes a membrane-associated phospholipase that displays lysophospholipase and phospholipase A2 activities through removal of sn-1 and sn-2 fatty acids of glycerophospholipids. In addition, it displays lipase and retinyl ester hydrolase activities. The encoded protein is highly conserved and is composed of a large, glycosylated extracellular domain composed of four tandem homologous domains, followed by a hydrophobic segment that anchors the enzyme to the membrane and a short C-terminal cytoplasmic tail. This gene has been identified as a candidate rheumatoid arthritis risk gene. [provided by RefSeq, Jul 2016]

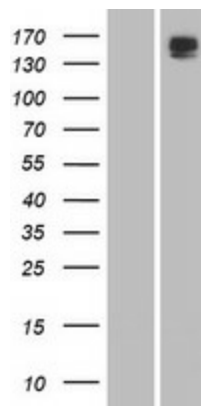
Product images:



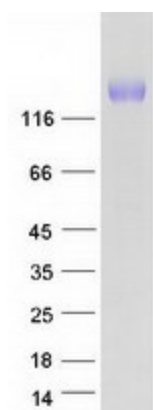
Circular map for RC218730



HEK293T cells were transfected with the pCMV6-ENTRY control (Cat# [PS100001], Left lane) or pCMV6-ENTRY PLB1 (Cat# RC218730, Right lane) cDNA for 48 hrs and lysed. Equivalent amounts of cell lysates (5 ug per lane) were separated by SDS-PAGE and immunoblotted with anti-PLB1 (Cat# [TA506860]). Positive lysates [LY407199] (100ug) and [LC407199] (20ug) can be purchased separately from OriGene.



Western blot validation of overexpression lysate (Cat# [LY407199]) using anti-DDK antibody (Cat# [TA50011-100]). Left: Cell lysates from untransfected HEK293T cells; Right: Cell lysates from HEK293T cells transfected with RC218730 using transfection reagent MegaTran 2.0 (Cat# [TT210002]).



Coomassie blue staining of purified PLB1 protein (Cat# [TP318730]). The protein was produced from HEK293T cells transfected with PLB1 cDNA clone (Cat# RC218730) using MegaTran 2.0 (Cat# [TT210002]).