

Product datasheet for **RC218722**

DMRTA2 (NM_032110) Human Tagged ORF Clone

Product data:

| | |
|---------------------------|---|
| Product Type: | Expression Plasmids |
| Product Name: | DMRTA2 (NM_032110) Human Tagged ORF Clone |
| Tag: | Myc-DDK |
| Symbol: | DMRTA2 |
| Mammalian Cell Selection: | Neomycin |
| Vector: | pCMV6-Entry (PS100001) |
| E. coli Selection: | Kanamycin (25 ug/mL) |



[View online »](#)

ORF Nucleotide Sequence:

>RC218722 representing NM_032110
 Red=Cloning site Blue=ORF Green=Tags(s)

TTTTGTAATACGACTCACTATAGGGCGGCCGGGAATTCGTCGACTGGATCCGGTACCGAGGAGATCTGCC
 GCC**CGGATCGCC**

ATGGAGCTGCGCTCGGAGCTGCCAGCGTGCCCGCGCGGACGCGGGCGGCAACAGCGACGGGGC
 CGCTGTGGCGTCGGTGGCGTCGGTGGCGCAGCCGCGCGGCCCTGCATCGCTACCGGTGAGCGTGCC
 AGCGCGCTTGTGCGGGGGCCGCACTGTTGCTGCGGGCAGCCGAGAAGTACCCGCGACCCCAAGTGC
 GCGCGCTGTCGAACCATGGCGTGGTGTGCGCCCTCAAGGGCCACAAACGCTACTGTCGCTGGAAGGACT
 GCCTGTGCGCCAAGTGCACGCTCATCGCGGAGCGCCAGCGTGTATGGCGGCGCAGGTGGCGCTGCGCAG
 GCAGCAGGCGCAGGAGGAGAACGAGGCGCGGAGCTGCAGCTGCTACGGCACTGCCGAGGGGCTGGCG
 CTGGCCGCGCCAACGGCATCATCCCCGAGGCCCGCTACGAGGTCTTCGGTTCAGTGTGCGCCGCCG
 ACGGGCGGGGACCTGGAGCGGGAGCGCCCGGGGACCGGAGGCGGAGCAGCTGGCGCAGGGGGCTCAGA
 GGCCAAGTTGAGAAGTTTGACCTGTTTCTAAGACGCTGCTGCAGGCAGGCCCGCGGGCAGCCCGCTG
 CGCCCGCGGTGAAGCCCTTATACCCGACGGCGCAGACTCGGGGCCCGGACGTCGTCCCAGAGGTGC
 GGCCCGGCTCAGGCTCGGAGAACGGCGATGGCGAGTCTTTTCTGGTTCGCCCTAGCTCGGGCCTCCAA
 AGAGGCAGGTGGCAGCTGCCAGGCAGCGCTGGCCCTGGCGGCGGCGGAGGAGACAGCCCGGCTCC
 GCTAGCCCTCTGGGCTCTGAATCCGGTTCAGAGGCTGACAAAGAAGAGGGTGAAGCCGCGCCGCGCCAG
 GGCTGGGCGGAGGCTCGGGTCCACGGCAGCGGACGCCGCTGGATATCTTGACACGCGTGTCCAGGCCA
 CCGGCGAGGCGTCTGGAGCTGGTGTTCAGGGCTGCGGCGGCGACGTGGTGCAGGCCATCGAGCAGGTG
 CTGAACCACCACGTTGGGGCTGGCGGCCGCTGGCCCTGCGGCGCCCGAGATAAGGCCCGCGTGG
 GTGCTGCAGCAGCTGCAGACGACGCGTGGCCAGCCGCGTGCAGCGCCCGCCCGCCCGCCCGCCGCG
 CGGGGGGCTGGGCTGCCTGCGCCGCTGCAGGCGGGGCCCGCGCACCTCCGCACCACAGACCCCTTGCTG
 GCCGCGCCATGGCGCTGGGGCTGGGCTCGCTGAGCAGCCGCTCGGCCTTCTCGCGCTGCAGCCCA
 ACGCCAGTCACTTCGGTCCGACGCGGGCGCTACCCGCTGGGCGCGCCGCTCGGCCTCAGCCCCCTGCG
 CCTGGCTACTCCGCGGCGGGCGCACAGCCGCGGTCTGGCCTTTCATGGCGCCCTACTCCACTGCGGGC
 TTGGTGCCACGCTCGGCTTCCGCCACCCATGGACTACGCTTTAGCGATCTCATGCGTACCCTCGG
 CCGCGCTGCTGCGGCGGTGCACAAGGAGCCGACCTACGGCGGCGCCTGTACGGGCTATGGTCAACGG
 CGCTCCGAGAAGCAG

AG**CGGACCG**ACGCGTACGCGGCCGCTCGAGCAGAACTCATCTCAGAAGAGGATCTGGCAGCAAATGATATCC
 TGGATTACAAGGATGACGACGATAAGGTTTAA

Protein Sequence:

>RC218722 representing NM_032110
 Red=Cloning site Green=Tags(s)

MELRSELPSVPGAATAAAATATGPPVASVASVAAAAAASLPVSVAGLLRGPPLLLRAAEKYPRTPKC
 ARCRNHGVVSALKGHKRYCRWKDCLCAKCTLIAERQVRMAAQVALRRQQAQEENEARELQLLYGTAEGLA
 LAAANGIIPRPAYEVFGSVCAADGGGPGAGAPAGTGGGAAGAGGSEAKLQKFDLFPKTLQLQAGRPGSPL
 PPPVKPLSPDGADSGPGTSSPEVRPVGSGSENGDGEFSGSPALARASKEAGGSCPGSAGPGGGGEEDSPGS
 ASPLGSESGSEADKEEGEAAAPAGLGGGSGPRQRTPLDILTRVFPGHRRGVLELVLQCGCGDVVQAIQV
 LNHHRGGLAAGLGAAPPDKAAVGA AAAADDWPSRVDA AAAAAAGGPGLPAPLQAGPAAPPHRPLL
 AGAMAPGALGSLSSRSFAPLQPNASHFGADAGAYPLGAPLGLSPLRLAYSAAAAHSRGLAFMAPYSTAG
 LVPTLGFRRPMDYAFSDLMRDRSAAAAAVHKEPTYGGGLYGPMVNGAPEKQ

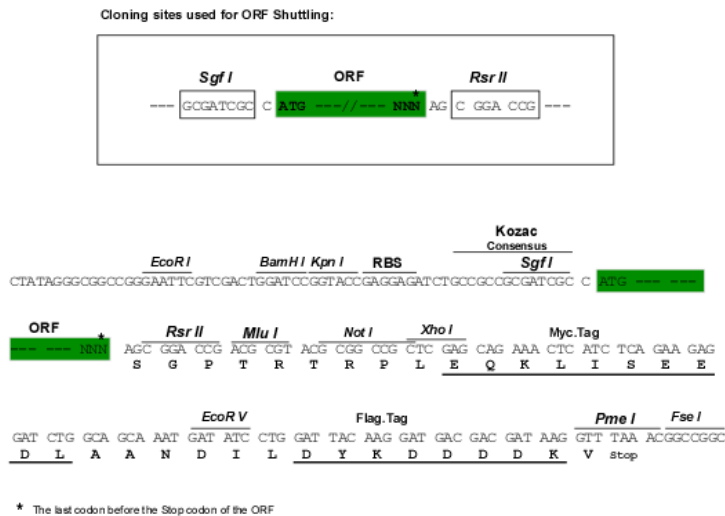
SGPTRRRLEQKLI**SEEDLA**ANDILDYKDDDDKV

Chromatograms:

https://cdn.origene.com/chromatograms/ja1399_a08.zip

Restriction Sites:

Sgfl-RsrII

Cloning Scheme:


ACCN: NM_032110

ORF Size: 1626 bp

OTI Disclaimer: The molecular sequence of this clone aligns with the gene accession number as a point of reference only. However, individual transcript sequences of the same gene can differ through naturally occurring variations (e.g. polymorphisms), each with its own valid existence. This clone is substantially in agreement with the reference, but a complete review of all prevailing variants is recommended prior to use. [More info](#)

OTI Annotation: This clone was engineered to express the complete ORF with an expression tag. Expression varies depending on the nature of the gene.

Components: The ORF clone is ion-exchange column purified and shipped in a 2D barcoded Matrix tube containing 10ug of transfection-ready, dried plasmid DNA (reconstitute with 100 ul of water).

- Reconstitution Method:**
1. Centrifuge at 5,000xg for 5min.
 2. Carefully open the tube and add 100ul of sterile water to dissolve the DNA.
 3. Close the tube and incubate for 10 minutes at room temperature.
 4. Briefly vortex the tube and then do a quick spin (less than 5000xg) to concentrate the liquid at the bottom.
 5. Store the suspended plasmid at -20°C. The DNA is stable for at least one year from date of shipping when stored at -20°C.

RefSeq: [NM_032110.3](#)

RefSeq Size: 3114 bp

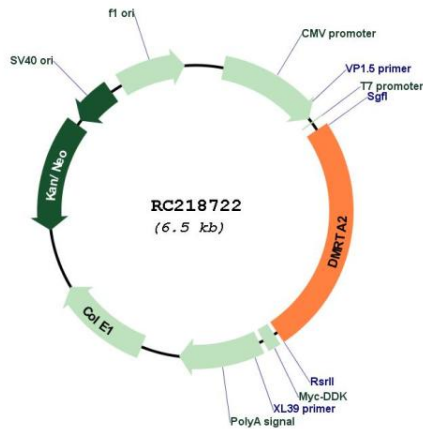
RefSeq ORF: 1629 bp

Locus ID: 63950

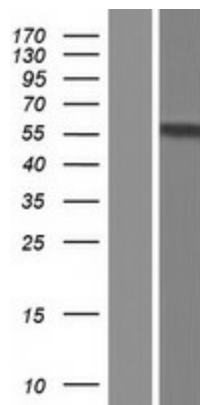
UniProt ID: [Q96SC8](#)

Cytogenetics: 1p32.3
MW: 53.2 kDa
Gene Summary: May be involved in sexual development.[UniProtKB/Swiss-Prot Function]

Product images:



Circular map for RC218722



Western blot validation of overexpression lysate (Cat# [LY410391]) using anti-DDK antibody (Cat# [TA50011-100]). Left: Cell lysates from untransfected HEK293T cells; Right: Cell lysates from HEK293T cells transfected with RC218722 using transfection reagent MegaTran 2.0 (Cat# [TT210002]).