

## Product datasheet for **RC218718**

### WFDC10B (NM\_172006) Human Tagged ORF Clone

#### Product data:

**Product Type:** Expression Plasmids  
**Product Name:** WFDC10B (NM\_172006) Human Tagged ORF Clone  
**Tag:** Myc-DDK  
**Symbol:** WFDC10B  
**Synonyms:** WAP12  
**Mammalian Cell Selection:** Neomycin  
**Vector:** pCMV6-Entry (PS100001)  
**E. coli Selection:** Kanamycin (25 ug/mL)  
**ORF Nucleotide Sequence:** >RC218718 ORF sequence  
**Red=Cloning site Blue=ORF Green=Tags(s)**

TTTTGTAATACGACTCACTATAGGGCGCCGGGAATTCGTCGACTGGATCCGGTACCGAGGAGATCTGCC  
GCC**CGATCGCC**

**ATGGCACCCAGACTCTGCTGCCTGTCTGTTCTCTGTGTGCTGCTGCTGCAGGCCAGGGAGGATACC**  
**GTGACAAGATGAGGATGCAGAGAATCAAGGTCTGTGAGAAGCGACCCAGCATAGATCTATGCATCCACCA**  
**CTGTTCAATTTCCAAAAGTGTGAAACAAATAAGATATGCTGTTACGCCCTTCTGTGGGAACATTTGTATG**  
**AGCATCCTA**

**ACGCGTACGCGGCCGCTCGAGCAGAACTCATCTCAGAAGAGGATCTGGCAGCAAATGATATCCTGGATT**  
**ACAAGGATGACGACGATAAGGTTTAA**

**Protein Sequence:** >RC218718 protein sequence  
**Red=Cloning site Green=Tags(s)**

MAPQTLPLVLLCVLLLQAQGGYRDKMRMQRIKVCEKRPSIDLCHHCSYFQKCETNKICCSAFCGNICM  
SIL

**TRTRPLEQKLISEEDLAANDILDYKDDDDKV**

**Chromatograms:** [https://cdn.origene.com/chromatograms/mk6442\\_f05.zip](https://cdn.origene.com/chromatograms/mk6442_f05.zip)

**Restriction Sites:** Sgfl-Mlul



[View online »](#)

**Cloning Scheme:**


**ACCN:** NM\_172006

**ORF Size:** 219 bp

**OTI Disclaimer:** The molecular sequence of this clone aligns with the gene accession number as a point of reference only. However, individual transcript sequences of the same gene can differ through naturally occurring variations (e.g. polymorphisms), each with its own valid existence. This clone is substantially in agreement with the reference, but a complete review of all prevailing variants is recommended prior to use. [More info](#)

**OTI Annotation:** This clone was engineered to express the complete ORF with an expression tag. Expression varies depending on the nature of the gene.

**Components:** The ORF clone is ion-exchange column purified and shipped in a 2D barcoded Matrix tube containing 10ug of transfection-ready, dried plasmid DNA (reconstitute with 100 ul of water).

- Reconstitution Method:**
1. Centrifuge at 5,000xg for 5min.
  2. Carefully open the tube and add 100ul of sterile water to dissolve the DNA.
  3. Close the tube and incubate for 10 minutes at room temperature.
  4. Briefly vortex the tube and then do a quick spin (less than 5000xg) to concentrate the liquid at the bottom.
  5. Store the suspended plasmid at -20°C. The DNA is stable for at least one year from date of shipping when stored at -20°C.

**RefSeq:** [NM\\_172006.2](#), [NP\\_742003.1](#)

**RefSeq Size:** 632 bp

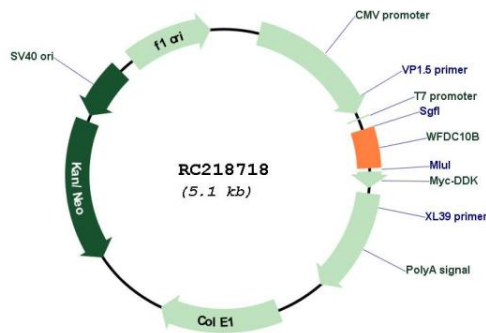
**RefSeq ORF:** 222 bp

**Locus ID:** 280664

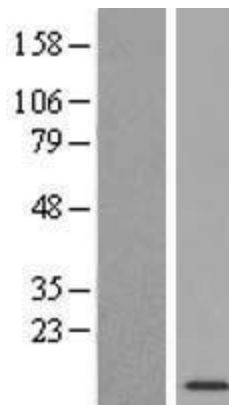
**UniProt ID:** [Q8IU3](#)  
**Cytogenetics:** 20q13.12  
**Protein Families:** Secreted Protein, Transmembrane  
**MW:** 8.3 kDa

**Gene Summary:** This gene encodes a member of the WAP-type four-disulfide core (WFDC) domain family. The WFDC domain, or WAP signature motif, contains eight cysteines forming four disulfide bonds at the core of the protein, and functions as a protease inhibitor. Most WFDC gene members are localized to chromosome 20q12-q13 in two clusters: centromeric and telomeric. This gene belongs to the telomeric cluster. Two alternatively spliced transcript variants have been found for this gene, and they encode distinct isoforms. [provided by RefSeq, Jul 2008]

### Product images:



Circular map for RC218718



Western blot validation of overexpression lysate (Cat# [LY406807]) using anti-DDK antibody (Cat# [TA50011-100]). Left: Cell lysates from untransfected HEK293T cells; Right: Cell lysates from HEK293T cells transfected with RC218718 using transfection reagent MegaTran 2.0 (Cat# [TT210002]).