

## Product datasheet for **RC218712**

### **RNF190 (MARCH10) (NM\_001100875) Human Tagged ORF Clone**

#### **Product data:**

Product Type:	Expression Plasmids
Product Name:	RNF190 (MARCH10) (NM_001100875) Human Tagged ORF Clone
Tag:	Myc-DDK
Symbol:	RNF190
Synonyms:	MARCH-X; MARCH10; RNF190
Mammalian Cell Selection:	Neomycin
Vector:	pCMV6-Entry (PS100001)
E. coli Selection:	Kanamycin (25 ug/mL)



[View online »](#)

**ORF Nucleotide  
Sequence:**

>RC218712 ORF sequence  
 Red=Cloning site Blue=ORF Green=Tags(s)

TTTTGTAATACGACTCACTATAGGGCGGCCGGAATTCGTCGACTGGATCCGGTACCGAGGAGATCTGCC  
 GCC**CGCATCGCC**

ATGTTGCATGACGCAAGGGACAGGCAGAAGTTCTTCAGCGATGTTCAAGTATCTGCGGGACATGCAGCATA  
 AGGTGGACTCTGAGTATCAGGCTTGTCTGAGACGACAGGAATATAGAAGAGACCCAAATGAGAAGAAACG  
 CGATCAGTTTTGGGGCAAGAGACAAGTTTTGAGAGATCCCGTTTTCTAGCAGGTCATCTTCCAACACG  
 AGTTCTAGTGAGGAGGATGCTCTAACTGAACCAAGGTCATCTATCAAGATATCTGCATTTAAGTGTGACT  
 CCAAACCTCCAGCAATTGACCAAACATCAGTCAAGCAGAAACATAAAAGTACCATGACTGTAAGGAAAGC  
 AGAGAAAGTGGACCCAGCGAACCTCTCCAGCAGACCAAGCACAATGGTTTTATTAAGAAAGAGGAAA  
 CCAAACCTGAGGAGATTTACAGTCAGCCAGAATCGCACAGCCCGAGAGCATCTGGGGACAGAAGCAGAC  
 AGAAACAGCAGTGGCCTGCAAAGGTGCCGGTCCAGGGGAGCAGATCAAGTAGTTCAACAAGAAGGCCCT  
 GATGTGTAACACTAAGCTGAAGAGGCCAAATCAAGAGAGAAGAACTTGGTCCCATCGTCACAGCCAATG  
 ACTGAGAACGCCCTGATAGAGCCAAAAAGGAGACCCGAGTGTCTTCCAGAGTGAGCTGCATCCAG  
 CCCTGTCCAGGCCTTCCAAGAAAAAATAGTCTCAAGTATTGAGTGAGTTCTCGGGGCCACCACTCAC  
 ACCCACCCTGTAGGAGGGCCAAGAAAGGCATCATTTAGGTTCCGAGATGAAGACTTTTTATTCCATTTTG  
 TCATTGAACAGCAGAAGAGAAAGCGATGACACTGAAGAGGAAACCCAGTCTGAAGAATGTCTGTGGGTTG  
 GTGTGCGCTCACCTGTTCTCTTCCCATCACAAAAGAAGTAGATTTGGGGGGACATCGACCCCTCAGGC  
 CAAAAATAAAATTTTGAAGAAATGCTGAAAATTGCAGAGGTCATTCTTCAAGAAGAAGTGAGCCAGT  
 CATGGCTCATTGAGAATAAGCAATGCAATGGAGCCAGCAACAGAGCGCCTTCTGCTGGGCAAAGGTTGT  
 CCAAGACCCCGGGCTGCCTGATAGGGAATCTGCTACAGAGAAGGACAGAGGTGGCAGTAAAAATGCGAA  
 AAAGAGCCCTCTTTCGTGGGACACCAAATCCGAGCCAGACAAGAGGTTGGTGTCAATGCTGAAAAATGTA  
 TGGAGTGATTGATTTCTGTGGAACATAGGCCTGGCACCCATGATTCTGAAGGTAAGTGGAAAGACTATT  
 TAAACAGTTCTCAAAATCTCTTACTACTTTATTTCTGGCAGACCAATATCTCCAAGATCATCAGTGAA  
 TTCATCTATAACCCCTCTGCATCATTGATGCTCTGCTCTGAGAGATGATATTCCAGTAGACTTGCA  
 ATGTCATCGACTTCAGTTCACAGCTCAGACTCAGAGGGAAACTCAGGGTTTCATGTTGCCAACCACTGT  
 CTCCCATTAGAAATAGGACTCCATTTGCCAGTCCGAAAACCATAATTATTTCCAGTAAACAGTGCACA  
 CGAATTTGCTGTCAGGGAAGCAGAAGATACTACTTTAACAAGCCAGCCTCAGGGGCTCCACTATATACA  
 GATCTCTTACTAAATCCACAGGGCAATTTGTCCTTAGTGGATTCTCCAGCTCCTCTCCATCAAGAAATGA  
 ACTCAGAAGGCCATTTGCATGTGTCTGGGTCTCTGCAAGAAAATACACCATTTACTTTCTTTCAGTGTG  
 TCAATTTCCAAATCAAAATGATAATGGGAGCAGGATGGCAGCCTCTGGTTTCACAGATGAAAAGGAAACC  
 AGTAAGATAAAGGCAGACCCCTGAGAAAATCAAGAAATTGCAAGAAAGTCTCTGGAGGAGGACTCCGAGG  
 AGGAGGGAGAC

**ACGCGT**ACGCGGGCCGCTCGAGCAGAAACTCATCTCAGAAGAGGATCTGGCAGCAAATGATATCCTGGATT  
 ACAAGGATGACGACGATAAGGTTTAA



**Reconstitution Method:**

1. Centrifuge at 5,000xg for 5min.
2. Carefully open the tube and add 100ul of sterile water to dissolve the DNA.
3. Close the tube and incubate for 10 minutes at room temperature.
4. Briefly vortex the tube and then do a quick spin (less than 5000xg) to concentrate the liquid at the bottom.
5. Store the suspended plasmid at -20°C. The DNA is stable for at least one year from date of shipping when stored at -20°C.

**RefSeq:** [NM\\_001100875.3](#)

**RefSeq Size:** 3072 bp

**RefSeq ORF:** 2427 bp

**Locus ID:** 162333

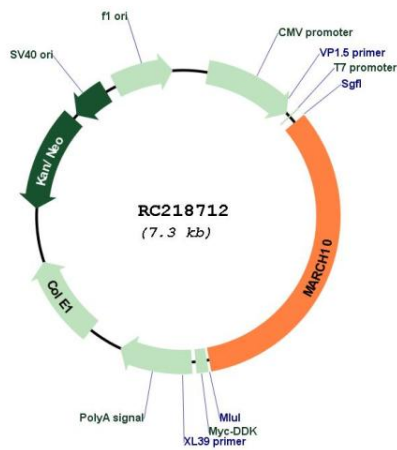
**UniProt ID:** [Q8NA82](#)

**Cytogenetics:** 17q23.2

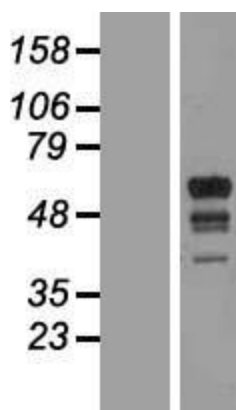
**MW:** 73.5 kDa

**Gene Summary:** MARCH10 is a member of the MARCH family of membrane-bound E3 ubiquitin ligases (EC 6.3.2.19). MARCH enzymes add ubiquitin (see MIM 191339) to target lysines in substrate proteins, thereby signaling their vesicular transport between membrane compartments (Morokuma et al., 2007 [PubMed 17604280]).[supplied by OMIM, Apr 2010]

**Product images:**



Circular map for RC218712



Western blot validation of overexpression lysate (Cat# [LY420299]) using anti-DDK antibody (Cat# [TA50011-100]). Left: Cell lysates from untransfected HEK293T cells; Right: Cell lysates from HEK293T cells transfected with RC218712 using transfection reagent MegaTran 2.0 (Cat# [TT210002]).