

Product datasheet for RC218709

FNDC3A (NM_014923) Human Tagged ORF Clone

Product data:

Product Type:	Expression Plasmids
Product Name:	FNDC3A (NM_014923) Human Tagged ORF Clone
Tag:	Myc-DDK
Symbol:	FNDC3A
Synonyms:	bA203I16.1; bA203I16.5; FNDC3; HUGO
Mammalian Cell Selection:	Neomycin
Vector:	pCMV6-Entry (PS100001)
E. coli Selection:	Kanamycin (25 ug/mL)
ORF Nucleotide Sequence:	>RC218709 representing NM_014923 Red=Cloning site Blue=ORF Green=Tags(s)

TTTTGTAATACGACTCACTATAGGGCGGCCGGAATTCGTCGACTGGATCCGGTACCGAGGAGATCTGCC
GCC**CGATCGCC**

ATGAGTGGTCTGCTCAGGTTCCAATGATGTCCCCAAATGGTTCTGTGCCTCCTATCTATGTGCCTCCTG
GATATGCCCCACAGGTTATTGAAGACAATGGTGTTCGAAGAGTTGTCGTGGTCCCTCAGGCACCAGAGTT
TCACCCGGTAGTCACACAGTTCTCCACCGTTCTCCACATCCTCCTACCTGGTTTCATTCTGTCCCA
ACTATGATGCCGCTCCACCACGTCATATGTACTACCCGTGACTGGAGCTGGAGACATGACAACACAGT
ATATGCCACAGTATCAGTCTTCACAAGTCTATGGAGATGTAGATGCTCACTCTACACATGGAAGGCCAA
CTTTAGAGATGAACGATCTAGTAAAACATATGAACGTTTTGCAGAAAAAATGAAGGATCGCCAAGGAACA
CAGAAAGATAAAATGAGCAGTCCACCATCATCACCCAGAAATGCCCTTCTCCCATTAATGAACATAATG
GACTTATAAAAAGGACAAATTTGCTGGTGGTATAAACACAGGATCAGCAAAAATCAAGTCTGGGAAGGGGAA
AGGTGGTACACAAGTTGATACAGAAATGAAGAAAAAGATGAAGAACTAAAGCATTTGAAGCACTTCTT
TCCAACATTGTCAAACAGTGGCTCCGACATCCAGGCAAGGACAGTAGTACTTACCTGGTCAACACCTT
CCAGCCTCATTAAATGGTGAACAGATGAAAGTAGTGTACCAGAGCTCTATGGTTATGAAGTTCTGATCTC
AAGTACTGGAAAAGATGGGAAATACAAAAGTGTATATGTAGGAGAAGAAACAAATACACTTTAAATGAT
CTCAAGCCAGCCATGGATTACCATGCAAAAGTCCAGGCAGAATAAATTCTATAAAGGGAACCTCCTCAG
AGGCTGAAATCTTTACCACCTTGAGCTGTGAACCTGATATACCTAATCCACCAAGGATAGCCAATCGGAC
CAAAAATTCACCTCACTTTGCAATGGAAGGCACCTAGTGACAATGGTTCTAAAATCCAAAACCTTTGTATTA
GAATGGGATGAAGGAAAAGGAAATGGAGAATTTTGTGAGTGTACATGGGCTCACAGAAACAATTTAAAA
TTACTAACTTTACCAGCAATGGGCTGTAAATTCAGACTATCGGCCAGAAATGACTATGGTACAAGTGG
TTTTAGTGAAGAAGTCTTATATTACACCTCAGGCTGTGCTCCTTCTATGCCAGCAAGTCTGTATTAACC
AAGGCTGGAATTACTTGGTTATCCTTACAATGGAGTAAGCCCTCAGGAACACCATCAGATGAAGGAATTT
CTTACATTTTAGAGATGGAGGAAGAAATTCAGGATATGGTTTTAAGCCTAAATATGATGGAGAAGATCT
TGCTTACACAGTAAAAATCTCAGACGTAGTACTAAGTATAAATTAAGGTTATTGCTTACAACCTCAGAA



[View online »](#)

GGTAAAAGTAATCCAAGTGAAGTAGTAGAATTTACTACTTGCCTGATAAACAGGCATACCTGTAAGC
CTTCAGTGAAAGGAAAGATACATTACACAGTTTTTAAAAAACCTGGGATCCACCAAAAGACAATGGCGG
AGCAACCATCAATAAATATGTAGTGGAGATGGCAGAAGTTCTAACGGAAACAAATGGGAAATGATATAC
AGTGGTGTACCAGGGAACATCTTTGTGATCGACTGAATCCAGGCTGTTTCTATCGTTTACGAGTTTACT
GCATCAGTGATGGAGGACAGAGTGGGTCTCTGAATCTTACTTGTGCAGACTCCAGCTGTGCCTCCTGG
CCCATGCCTCCCTCCCAGATTACAGGGTAGACCCAAAGCAAAGAATAACAGTTACGATGGGGACCCCTT
CTGGTTGATGGTGGATCACCCATTTCTGTTACAGTGTGAAATGTCTCCTATAGAAAAAGATGAACCTA
GAGAAGTTTACCAAGTTCTGAAGTAGAATGTACAGTGAGCAGCCTTCTTCTGGAAAGACATACAGCTT
CAGACTACGTGCAGCTAACAAAAATGGGGTTTGGACCATTTTCAGAAAAATGTGATATTACTACAGCCCT
GGGCCACCAGATCAGTGAAGCCCTCAAGTGACATGTAGATCTGCAACTTGTGCACAAGTGAATTGGG
AGGTTCTTTGAGTAATGGAACAGATGCTACTGAATATCGACTGGAGTGGGGAGGAGTTGAAGGAAGTAT
GCAGATATGTTACTGTGGCCTGGTCTCAGTTATGAAATAAAAGGACTTTCACCAGCAACTACCTATTAT
TGCAGGGTCCAGGCTCTGAGTGTGTGGTGCAGGCCCTTTCAGTGAAGTAGTAGCCTGTGTGACTCCAC
CATCAGTTCCTGGCATTGTGACCTGTCTCAAGAAATAAGCGATGATGAGATAGAAAAATCCCATATTTC
ACTTTCTACATGCCTTGAATAAGCTGGGAAAAGCCTTGTGATCATGGTTCGGAAATCCTTGCTACAGC
ATAGACTTTGGAGATAACAATCCCTAACAGTGGGAAAGGTTACAAGCTATATTCAACAATTTGCAAC
CAGATACAACATACAGAATACGAATTAAGCCTTGAATAGCCTTGGAGCTGGTCTTTACGCCATATGAT
AAAATTAATAAAGCCTCTCCCTCTGATCCACCTCGTCTGGAATGTGTTGCCTTTAGCCACCAGAAC
CTTAAGCTGAAATGGGGAGAAGGAACTCCAAGACATTGTCAACCGATTCTATTCAGTACCACCTCAGA
TGGAGGATAAGAATGGACGGTTTGTATCCCTATACAGAGGACCATGTACATACAAAAGTACAAAGACT
TAATGAGTCAACATCCTATAAATCTGTATTCAAGCTTGAATGAAGCTGGGGAAGTCCCTCTCCCAA
GAATATATTTTCACTACTCCAAAATCTGTCCAGCTGCCTTGAAGCCCCAAAAATAGAGAAAGTAAATG
ATCACATTTGTGAAATTACATGGGAGTGTTCAGCCAATGAAAGGTGATCCAGTTATTTACAGTCTTCA
AGTTATGTTGGGAAAAGATTAGAATTCAAACAGATTTACAAGGGTCCCGACTTTCCTTCCGGTATTCC
AGCCTTACAGTGAAGTGAATATCGCTTCCGTGTATGTGCCATTGCCAGTGCCAAAGACTCTCTGGGAC
ACCAGGACCTCGTAGGTCCTACAGCACCACAGTGCTCTTCATCTCTCAGAGGACTGAACCACCAGCCAG
CACCAACAGAGACTGTGGAAGCACAAGGACCCGACGGGCACTGAGTGACGAGCAGTGTGCTGCCGTC
ATCCTTGTGCTGTTTCTTTTCCATTTTGATTGCCTTTATCATTAGTACTTTGTAATCAAG

ACGCGTACGCGGCCGCTCGAGCAGAACTCATCTCAGAAGAGGATCTGGCAGCAATGATATCCTGGATT
ACAAGGATGACGACGATAAGGTTTAA

Protein Sequence: >RC218709 representing NM_014923
Red=Cloning site Green=Tags(s)

```

MSGPAQVPMSPNGSVPPPIYVPPGYAPQVIEDNGVRRVVVVPQAPEFHGSHTVLHRSPHPPLPGFIPVP
TMMPPPPRHMYSPVTGAGDMTTQYMPQYQSSQVYGDVDAHSTHGRSNFRDERSSSKTYERLQKCLKDRQGT
QKDKMSSPPSSPQKCPSPINEHNLKIQGQIAGGINTGSAKIKSGKGGTQVDTEIEEKDEETKAFEALL
SNIVKPVASDIQARTVVLWSPSSSLINGETDESSVPELYGYEVLISSTGKDGKYKSVYVGEETNITLND
LKPAMDYHAKVQAEYNSIKGTPSEAEIFTLSCPEIPNPPRIANRTKNSLTLQWKAPSDNGSKIQNFVL
EWDEGKNGEFCQCYMGSQKQFKITKLSAMGCKFRLSARNDYGTSGFSEEVLYYTSGCAPSMPASPVLT
KAGITWLSLQWSKPSGTPSDEGISYILEMEEETSGYGFKPKYDGEDLAYTVKNLRRSTKYKFKVIAYNSE
GKSNPSEVVEFTTCDPKPGIPVKPSVKGIHSHSFKITWDPKDNNGATINKYVVEAEGSNGNKWEMIY
SGATREHLCDRLNPGCFYRLRVYCSIDGGQSAVSESLLVQTPAVPPGCLPPRLQGRPKAKEIQLRWGPP
LVDGGSPISCYSVEMSPIEKDEPREVYQGEVECTVSSLLPGKTYSFRLRAANKMGFGPFSEKCDITTAP
GPPDQCKPPQVTCRSATCAQVNWVPLSNGTDVTEYRLEWGGVEGSMQICYCGPLSYEIKGLSPATYY
CRVQALSVVGAGPFSEVVACVTPPSVPGIIVTCLQEISDDEIENPHYSPSTCLAISWEKPCDHGSEILAYS
IDFGDKQSLTVGKVTSYIINNLQPDTTYRIRIQALNSLGAGPFSHMIKLTKPLPPDPPRLECVAFSHQN
LKLKWEGETPKTLSTDSIQYHLQMEDKNRFVSLYRGPCHTYKVQRLNESTSYKFCIQACNEAGEGPLSQ
EYIFTTKPSVPAALKAPKIEKVNDHICEITWECLQPMKGPVIYSLQVMLGKDSEFKQIYKGPSSFRYS
SLQLNCEYRFRVCAIRQCQDSLGHQDLVGPYSTTVLFIISQRTEPPASTNRDTRRTRRALSDEQCAAV
ILVLFAPFFSILIAFIIQYFVIK
    
```

TRTRPLEQKLISEEDLAANDILDYKDDDDKV

Chromatograms: https://cdn.origene.com/chromatograms/mk6259_e04.zip

Restriction Sites: SgfI-MluI

Cloning Scheme:

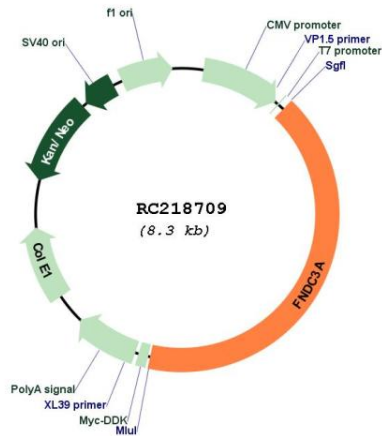


ACCN: NM_014923

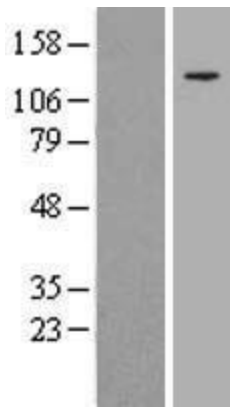
ORF Size: 3426 bp

OTI Disclaimer:	The molecular sequence of this clone aligns with the gene accession number as a point of reference only. However, individual transcript sequences of the same gene can differ through naturally occurring variations (e.g. polymorphisms), each with its own valid existence. This clone is substantially in agreement with the reference, but a complete review of all prevailing variants is recommended prior to use. More info
OTI Annotation:	This clone was engineered to express the complete ORF with an expression tag. Expression varies depending on the nature of the gene.
Components:	The ORF clone is ion-exchange column purified and shipped in a 2D barcoded Matrix tube containing 10ug of transfection-ready, dried plasmid DNA (reconstitute with 100 ul of water).
Reconstitution Method:	<ol style="list-style-type: none">1. Centrifuge at 5,000xg for 5min.2. Carefully open the tube and add 100ul of sterile water to dissolve the DNA.3. Close the tube and incubate for 10 minutes at room temperature.4. Briefly vortex the tube and then do a quick spin (less than 5000xg) to concentrate the liquid at the bottom.5. Store the suspended plasmid at -20°C. The DNA is stable for at least one year from date of shipping when stored at -20°C.
RefSeq:	NM_014923.5
RefSeq Size:	5917 bp
RefSeq ORF:	3429 bp
Locus ID:	22862
UniProt ID:	Q9Y2H6
Cytogenetics:	13q14.2
Domains:	FN3
Protein Families:	Transmembrane
MW:	125.6 kDa
Gene Summary:	Mediates spermatid-Sertoli adhesion during spermatogenesis.[UniProtKB/Swiss-Prot Function]

Product images:



Circular map for RC218709



Western blot validation of overexpression lysate (Cat# [LY414930]) using anti-DDK antibody (Cat# [TA50011-100]). Left: Cell lysates from untransfected HEK293T cells; Right: Cell lysates from HEK293T cells transfected with RC218709 using transfection reagent MegaTran 2.0 (Cat# [TT210002]).