

## Product datasheet for **RC218704**

### Collagen VI (COL6A2) (NM\_058174) Human Tagged ORF Clone

#### Product data:

Product Type:	Expression Plasmids
Product Name:	Collagen VI (COL6A2) (NM_058174) Human Tagged ORF Clone
Tag:	Myc-DDK
Symbol:	Collagen VI
Synonyms:	BTHLM1; PP3610; UCMD1
Mammalian Cell Selection:	Neomycin
Vector:	pCMV6-Entry (PS100001)
E. coli Selection:	Kanamycin (25 ug/mL)



[View online »](#)

**ORF Nucleotide Sequence:**

>RC218704 representing NM\_058174  
 Red=Cloning site Blue=ORF Green=Tags(s)

TTTTGTAATACGACTCACTATAGGGCGGCCGGGAATTCGTCGACTGGATCCGGTACCGAGGAGATCTGCC  
 GCC**CGGATCGCC**

ATGCTCCAGGGCACCTGCTCCGTCTCTGCTCTGGGGAATCCTGGGGCCATCCAGGCCAGCAGCAGG  
 AGGTCATCTCGCCGACACTACCGAGAGAAACAACAACCTGCCAGAGAAGACCGACTGCCCATCCACGT  
 GTACTTCGTGCTGGACACCTCGGAGAGCGTCACCATGCAGTCCCCACGGACATCCTGCTTTCCACATG  
 AAGCAGTTCGTGCCGAGTTCATCAGCCAGCTGCAGAACGAGTTCTACCTGGACCAGGTGGCGCTGAGCT  
 GGGCTACGGCGGCTGCACTTCTGACCAGGTGGAGGTGTTACAGCCACCGGGCAGCGACCGGGCCTC  
 TTTCATCAAGAACCTGCAGGGCATCAGCTCCTCCGCCGCGCACCTTACCCGACTGCGCGCTGGCCAAC  
 ATGACGGAGCAGATCCGGCAGGACCGCAGCAAGGGCACCGTCCACTTCGCCGTGGTCATCACCGACGGCC  
 ACGTACCAGGACGCCCCGCGGGGGCATCAAGTGCAGGGCAGCGGGCCCGCAGGAGGGCATCCGGCT  
 CTTCCGCGTGGCCCCAACCCAGAACCTGAAGGAGCAGGGCCTGCGGGACATCGCCAGCACGCCGACGAG  
 CTCTACCGCAACGACTACGCCACCATGTGCCGACTCCACCGAGATCAACCAGGACACCATCAACCGCCA  
 TCATCAAGGTCATGAAACACGAAGCCTACGGAGAGTGCTACAAGGTGAGTGCCTGGAAATCCCTGGGCC  
 CTCTGGGCCCAAGGGCTACCGTGGACAGAAGGGTGCCAAGGGCAACATGGGTGAGCCGGGAGAGCCTGGC  
 CAGAAGGGAAGACAGGGAGACCCGGGCATCGAAGGCCCATTTGGATTCCCAGGACCAAGGGCGTTCTCTG  
 GCTTCAAAGGAGAGAAGGGTGAATTTGGAGCCGACGGTCGCAAGGGGGCCCTGGCTGGCTGGCAAGAA  
 CGGGACCGATGGACAGAAGGGCAAGCTGGGGCGCATCGGACCTCCTGGCTGCAAGGGAGACCCTGGAAC  
 CGGGCCCGACGGTTACCCGGGGGAAGCAGGGAGTCCAGGGGAGCGAGGAGACCAAGGGCAAGGGGG  
 ACCCTGGCCGCCAGGACGCAGAGGGCCCCCGGAGAAAATCGGGGCAAGGGAAGCAAGGGGATCAAGG  
 CAACAATGGAGCCCCAGGAAGTCTGGTGTGAAAGGAGCCAAGGGCGGGCCTGGGCCCGCGGACCCAAA  
 GCGAGCCCGGGCGCAGGGGAGACCCCGCACCAAGGGCAGCCAGGCAGCGATGGCCCCAAGGGGAGA  
 AGGGGGACCTGGCCCTGAGGGCCCCGCGGCCTGGCTGGAGAGGTTGGCAACAAAGGAGCAAGGGAGA  
 CCGAGGCTTGCCTGGACCCAGAGGCCCCAGGGAGCTCTTGGGGAGCCCGAAAGCAGGGATCTCGGGGA  
 GACCCCGGTGATGCAGGACCCCGTGGAGACTCAGGACAGCCAGGCCCAAGGGAGACCCCGCAGGCCTG  
 GATTCAGTACCCAGGACCCCGAGGAGCACC CGGAGAAAAAGGCGAGCCCGGCCACGCGCCCCGAGGG  
 AGGCCGAGGCGACTTTGGCTTGAAGGAGAACCTGGGAGGAAAGGAGAGAAAGGAGACCTGCGGATCCT  
 GGTCCCCCTGGTGAAGCAGGCCCTCGGGGGCAAGAGGAGTCCCAGGACCCGAGGGTGAAGCCGGCCCC  
 CTGGAGACCCCGTCTCACGGAGTGTGACGTATGACCTACGTGAGGGAGACCTGCGGGTGTGCGACTG  
 TGAGAAGCGCTGTGGCGCCCTGGACGTGGTCTTCGTATCGACAGCTCCGAGAGCATTGGGTACACCAAC  
 TTCACACTGGAGAAGAACTTCGTATCAACGTGGTCAACAGGCTGGGTGCCATCGCTAAGGACCCCAAGT  
 CCGAGACAGGGACGCGTGTGGCGTGGTGCAGTACAGCCACGAGGGCACCTTTGAGGCCATCCAGCTGGA  
 CGACGAACATATCGACTCCCTGTGAGCTTCAAGGAGGCTGTCAAGAACCTCGAGTGGATTGCGGGCGGC  
 ACCTGGACACCCCTCAGCCCTCAAGTTTGCCTACGACCCCTCATCAAGGAGAGCCGGCGCCAGAAGACAC  
 GTGTGTTTGGGTGGTCAACAGGACGGCGCCACGACCCCTCGGGACGATGACCTCAACTGCGGGCGCT  
 GTGGCACCAGGACGTACAGTGCAGGCCATCGGCATCGGGGACATGTTCCACGAGAAGCAGAGAGTGAA  
 AACCTCTACTCCATCGCCTGCGACAAGCCACAGCAGGTGCGCAACATGACGCTGTTCTCCGACTGGTCTG  
 CTGAGAAGTTCATCGATGACATGGAGGAGCTCCTCTGCCCGACCCCTCAGATCGTGTGCCAGACCTTCC  
 CTGCCAAACAGATGCACCGTGGCTGGCGGCGAGCCCCGGTACCTTCTCCGACGGAAGAGGGGCCG  
 GACGCCACCTTCCCAGGACCATCCCCTGATCCAACAGTTGCTAAACGCCACGGAGCTCACGCAGGACCC  
 CGGCCGCTACTCCAGCTGGTGGCCGTGCTGGTCTACACCGCCGAGCGGGCCAAGTTCCGCCACCGGGT  
 AGAGCGGCAGGACTGGATGGAGCTGTTCAATTGACACCTTAAGCTGGTGCACAGGACATCGTGGGGGAC  
 CCCGAGACCGGCTGGCCCTCTGC

AG**CGGACCG**ACGCGTACGCGGCCGCTCGAGCAGAAACTCATCTCAGAAGAGGATCTGGCAGCAAATGATATCC  
 TGGATTACAAGGATGACGACGATAAGGTTTAA

**Protein Sequence:** >RC218704 representing NM\_058174  
 Red=Cloning site Green=Tags(s)

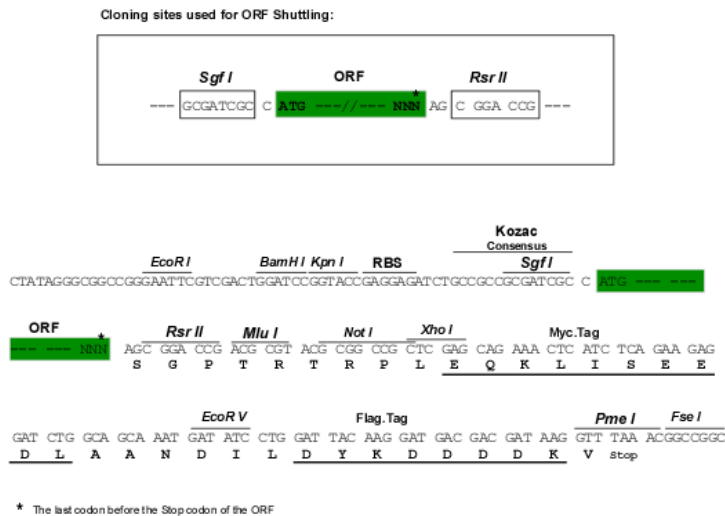
MLQGTCSVLLWLGILGAIQAQQQEVISPDTTERNNNCPEKTDPCIHVYFVLDTSVMTQSPDILLFHM  
 KQFVPOFISQLQNEFYLDQVALSWRYGGLHFSQVEVFSPPGSDRASFIKNLQGISFRRGTFTDCALAN  
 MTEQIRQDRSKGTVHFVAVVITDGHVTGSPCGGIKLAERAREEGIRLFAVAPNQNLKEQGLRDIASPHE  
 LYRNDYATMLPDSTEINQDTINRIKVMKHEAYGECYKVSCLIPGSPGPKGYRGQKGAKNMGEPGEPG  
 QKGRQGDPIEGPIGFPGPKGVPGFKGEKGEFGADGRKGAPLAGKNGTDGQKGLGRIGPPGCKGDPGN  
 RGPDPGYPGEAGSPGERGDQGGKGDPRGRRPPGEIGAKGSKGYQGNNGAPGSPGVKAGKGGPGRGPK  
 GEPGRRGDPGKSGPSDGPKEKGDGPEGPRGLAGEVGNKGAKGDRGLPGPRGPQALGEPGKQGSRG  
 DPGDAGPRGDSGQPGKGDPRPGFSYPGPRGAPGEKGEPRGPEGGRGDFGLKGEPRKGEKGEPADP  
 GPPGEPGPRGPRGVPGEPEGPPGDPGLTECDVMTYVRETGCCDCEKRCGALDVVVIDSSESIGYTN  
 FTLEKNFVINVNRLGAIKDPKSETGTRVGVVQYSHEGTFEAIQLDDEHIDSLSSFKEAVKNLEWIAGG  
 TWTPSALKFAYDRLIKESRRQKTRVFVAVITDGRHDPRDDDLNLRALCDRDVTVTAIGIGDMFHEKHESE  
 NLYSIACDKPQQVRNMTLFSDLVAEKFIIDMEDVLCPPDQIVCPDLPCQTDAPWPGEPPVTFRLTEEGP  
 DATFPRTIPLIQQLLNATELTQDPAAYSQLVAVLYYTAERAKFATGVERQDWMELFIDTFKLVHRDIVGD  
 PETALALC

SGPTRRRL**EQKLISEEDLAANDILDYKDDDDK**V

**Chromatograms:** [https://cdn.origene.com/chromatograms/mk8011\\_h04.zip](https://cdn.origene.com/chromatograms/mk8011_h04.zip)

**Restriction Sites:** SgfI-RsrII

**Cloning Scheme:**

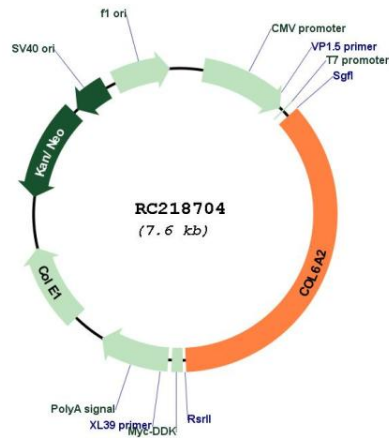


**ACCN:** NM\_058174

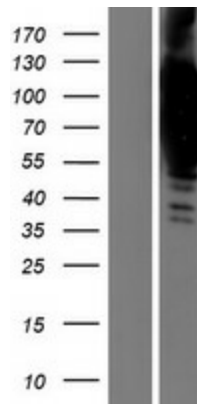
**ORF Size:** 2754 bp

<b>OTI Disclaimer:</b>	The molecular sequence of this clone aligns with the gene accession number as a point of reference only. However, individual transcript sequences of the same gene can differ through naturally occurring variations (e.g. polymorphisms), each with its own valid existence. This clone is substantially in agreement with the reference, but a complete review of all prevailing variants is recommended prior to use. <a href="#">More info</a>
<b>OTI Annotation:</b>	This clone was engineered to express the complete ORF with an expression tag. Expression varies depending on the nature of the gene.
<b>Components:</b>	The ORF clone is ion-exchange column purified and shipped in a 2D barcoded Matrix tube containing 10ug of transfection-ready, dried plasmid DNA (reconstitute with 100 ul of water).
<b>Reconstitution Method:</b>	<ol style="list-style-type: none"><li>1. Centrifuge at 5,000xg for 5min.</li><li>2. Carefully open the tube and add 100ul of sterile water to dissolve the DNA.</li><li>3. Close the tube and incubate for 10 minutes at room temperature.</li><li>4. Briefly vortex the tube and then do a quick spin (less than 5000xg) to concentrate the liquid at the bottom.</li><li>5. Store the suspended plasmid at -20°C. The DNA is stable for at least one year from date of shipping when stored at -20°C.</li></ol>
<b>RefSeq:</b>	<a href="#">NM_058174.1</a> , <a href="#">NP_478054.1</a>
<b>RefSeq Size:</b>	3145 bp
<b>RefSeq ORF:</b>	2757 bp
<b>Locus ID:</b>	1292
<b>UniProt ID:</b>	<a href="#">P12110</a>
<b>Cytogenetics:</b>	21q22.3
<b>Protein Families:</b>	Secreted Protein
<b>Protein Pathways:</b>	ECM-receptor interaction, Focal adhesion
<b>MW:</b>	95.3 kDa
<b>Gene Summary:</b>	This gene encodes one of the three alpha chains of type VI collagen, a beaded filament collagen found in most connective tissues. The product of this gene contains several domains similar to von Willebrand Factor type A domains. These domains have been shown to bind extracellular matrix proteins, an interaction that explains the importance of this collagen in organizing matrix components. Mutations in this gene are associated with Bethlem myopathy and Ullrich scleroatonic muscular dystrophy. Three transcript variants have been identified for this gene. [provided by RefSeq, Jul 2008]

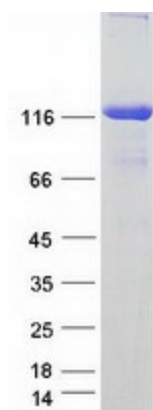
Product images:



Circular map for RC218704



Western blot validation of overexpression lysate (Cat# [LY409244]) using anti-DDK antibody (Cat# [TA50011-100]). Left: Cell lysates from untransfected HEK293T cells; Right: Cell lysates from HEK293T cells transfected with RC218704 using transfection reagent MegaTran 2.0 (Cat# [TT210002]).



Coomassie blue staining of purified COL6A2 protein (Cat# [TP318704]). The protein was produced from HEK293T cells transfected with COL6A2 cDNA clone (Cat# RC218704) using MegaTran 2.0 (Cat# [TT210002]).