

Product datasheet for RC218703

ZNF423 (NM_015069) Human Tagged ORF Clone

Product data:

| | |
|---------------------------|---|
| Product Type: | Expression Plasmids |
| Product Name: | ZNF423 (NM_015069) Human Tagged ORF Clone |
| Tag: | Myc-DDK |
| Symbol: | ZNF423 |
| Synonyms: | Ebfaz; hOAZ; JBTS19; NPHP14; OAZ; Roaz; Zfp104; ZFP423 |
| Mammalian Cell Selection: | Neomycin |
| Vector: | pCMV6-Entry (PS100001) |
| E. coli Selection: | Kanamycin (25 ug/mL) |
| ORF Nucleotide Sequence: | >RC218703 representing NM_015069. Blue=ORF Red=Cloning site Green=Tag(s) |

```
GCTCGTTTGTAGTGAACCGTCAGAATTTGTAAACGACTCACTATAGGGCGCCGGGAATTCGTCGACTG
GATCCGGTACCGAGGAGATCTGCCGCCGCGATCGCC
ATGCATAAGAAGAGGGTTGAAGAGGGGGAGGCCTCAGACTTCTCGCTGGCCTGGGATTCCTCCGTGACA
GCAGCAGGAGGCCTAGAAGGAGAGCCAGAGTGCATCAGAAAACCGCCGTGCGTGGAAGACAGGAAC
AGCGTGACAAGTCAAGAGGAGAGAAATGAGGATGATGAAGACATGGAGGATGAATCAATTTACACCTGC
GATCACTGTGACGAGGACTTCGAGTCTCTGGCAGACCTGACGGACCACCGGGCCACCGTGTCTGGA
GATGGTGTGACGACCCACAACCTCTCCTGGGTGGCCTCGTCTCCCTCCAGCAAGGATGTTGCGTCACCC
ACGCAGATGATCGGAGATGGTTGTGACCTCGGCCTCGGCGAGGAGGAAGGGGGCACGGCCCTGCCATAC
CCTTGCCAGTTCTGCGACAAGTCCTTATCCGCTTGAGCTACTTGAAGAGGCACGAGCAGATCCACAGC
GACAAGCTGCCGTTCAAGTGCACCTACTGCAGCCGCTCTTCAAGCACAAGAGGACCGCCGACCGGCAC
ATCAAGCTGCATACGGGCGACAAGAAGTATCACTGCCACGAGTGCAGGGCAGCCTTCTCCCGCAGCGAC
CACCTCAAGATCCACCTGAAGACCCACAGCTCCAGCAAGCCCTTCAAGTGCATGTGTGCAAGCGCGGC
TTCTCTCCACCAGCTCGCTGCAGAGCCACATGCAGGCCCAAAAAGAACAAGGAGCATCTGGCCAAG
TCGGAGAAGGAAGCCAAGAAGGACGACTTCATGTGCGACTACTGCGAGGACACCTTACGCCAGACGGAG
GAGCTGGAGAAGCACGTGCTCACCCGCCACCCGACGTGTCCGAGAAGGGGACCTGCAGTGCATTAC
TGCCCTGAGGTCTTCGTGACGAGAACAACACTGCTCGCCATATCCACCAAGCCACGCCAACAGAAA
CACAAAGTGCCCATGTGCCCTGAGCAGTTCTCCTCAGTGAAGGTGTCTACTGCCACCTGGACAGCCAC
CGGCAGCCGACTCCAGCAACCACAGTGTGAGTCCCGACCTGTACTGGGACGCTGGCCTCCATGAGC
AGCGCCACACCCGACTCCAGCGCTCTGTGGAGCGTGGCTCCACCCCGACTCCACCTTGAAGCCGCTG
CGGGGGCAGAAGAAGATGCGGGATGACGGGCAGGGCTGGACCAAGGTGGTCTATAGCTGCCCTATTGT
TCCAAGCGGGACTTTAACAGCCTGGCCGTGCTGGAGATCCACCTGAAGACCATCCACGGGACAAGCCC
CAGCAGAGCCACACATGTGAGTCTGCCTGGACTCCATGCCACCCTCTACAACCTAACGAGCAGGTT
CGCAAGCTGCACAAGAACCATGCCTACCCTGTGATGCAGTTTGGCAACATCTCTGCCTTCCACTGCAAC
TACTGCCCGAGATGTTGCCGACATCAATAGCCTGCAGGAGCACATCCGCGTCTCCACTGCGGCCCC
```



[View online >](#)

AACGCCAACCCCTCTGACGGTAATAATGCTTTCTTCTGCAACCAGTGCTCCATGGGTTTCCTTACTGAG
TCCTCCCTCACCGAGCACATCCAGCAGGCCACTGCAGTGTGGCAGTGCCAAACTAGAGTCTCCGGTG
GTGCAGCCACGCAGTCTTTCATGGAGGTCTATTCCTGCCCTACTGCACCAACTCCCCATCTTTGGC
TCCATCTGAACTCACCAAGCACATCAAGGAGAACCAAGAACATCCACTGGCCACAGCAAGAAG
TCCAAGGCCGAGCAGAGCCAGTCTCGTCCGATGTGGAGGTGTCTCCCCGAAGCGGCAGCGGCTCTCA
GCAAGCGCCAACCTCCATCTCCAATGGGGAGTATCCTTGAATCAATGCGACCTCAAGTTCTCCAATTT
GAGAGCTTCCAGACCCACTGAAGCTGCACCTGGAGCTGCTGCTGCGGAAGCAAGCGTGCCCCAGTGC
AAAGAGGACTTTGACTCCAGGAGTCCCTCCTGCAGCACCTGACAGTGCATTACATGACCACGTCCGACC
CACTATGTGTGCGAGAGCTGCGACAAGCAATTTCTCGGTGGATGACCTGCAGAAGCACCTGCTGGAC
ATGCACACCTTTGTGTTGTACCACTGCACCCTGTGTGAGGAGGTCTTCGACTCCAAGGTGTCCATCCAG
GTGCACCTGGCGGTGAAGCACAGCAATGAGAAGAAGATGTACCGCTGCACGGCTGCAACTGGGACTTC
CGCAAGGAGGCTGACCTGCAGGTGCACGTCAAACACAGCCACTGGGCAACCCGGCCAAGGCTCACAAG
TGCATCTTCTGTGGGAGACCTTACGACCCGAGGTGGAGCTGCAGTGCCACATCACCACACAGCAAG
AAGTAACTGTAAGTTCTGCAGCAAGGCCTTCCACGCCATCATCTGCTGGAGAAGCACCTGCGGGAG
AAGCACTGTGTGTTGATGCTGCGACCGAGAACGGCACGGCCAATGGGGTACCCCAATGGCCACCAAG
AAAGCTGAGCCTGCTGACCTGCAGGGCATGCTGCTTAAGAACCCTGAGGCACCTAACAGCCATGAGGCC
AGCGAGGATGACGTGGACGCGTCCGAGCCCATGTACGGCTGTGACATCTGCGGGGCGGCCTACACCATG
GAGGTGCTGCTGCAGAATCACCGGCTGCGGGACCAATATCCGGCCGGGCGAGGATGATGGCTCACGC
AAGAAGGCTGAGTTTATCAAGGGCAGTCACAAGTGCAACGTTTGTTCACGGACTTTCTTCTCGGAGAAC
GGGCTACGGGAGCACCTGCAGACGCACCGGGCCCTGCCAAGCACTACATGTGTCCCATCTGTGGTGTGAG
CGCTTCCCTTTCGCTGTGACGCTCACCGAACACAAGGTGACCCACAGCAAGAGCCTGGACACGGGCACC
TGTGCGATCTGCAAGATGCCCTGCAGAGCGAGGAGGAGTTTATTGAGCACTGCCAGATGCACCCCTGAC
CTGCGCAACTCACTCACGGGCTTCCGCTGTGTGGTCTGCATGCAGACAGTCACTTCCACGTTGAGCTC
AAGATCCATGGCACCTTCCACATGCAGAAGCTGGCGGGCAGCTCAGCGGGTCTCCCCCAATGGCCAG
GGGCTGCAGAAGCTCTACAAGTGCGCCCTGTGCCTCAAGGAGTCCGCGAGCAAGCAGGACCTGGTGAAG
CTTGACGTCAATGGGCTGCCCTACGGCCTCTGCGCCGGTGCATGGCCCGCAGCGCAACGGACAGGTG
GGTGGCTGGCCCGCCGAGCCCGCCGACCGGCCCTGTGCCGGCTCCGTTGCCCGAGTGCAGTGTG
AAGTTTGAGAGTGCCGAAGACCTGGAGAGCCACATGCAGGTGGACCACCGTGACCTCACGCCGAGACC
AGTGGGCCCCGAAAGGCACCCAGACATCGCCAGTGCCCCGAAAAGACATACCAGTGCATCAAGTGC
CAGATGACCTTCGAGAACGAGAGAGATCCAAATCCACGTTGCCAACCACATGATTGAGGAAGGCATC
AACCACGAGTGTAACTGTGCAACCAGATGTTGACTCCCGGCCAAGCTCCTCTGTACCTCATTGAG
CACAGCTTCGAGGGCATGGCGGCACCTTCAAATGCCCGTGTGTTTACAGTCTTCGTCCAGGCCAAC
AAGTTGCAGCAGCACATCTTTGCCGTGCACGGCAGGAGGACAAGATCTACGACTGCTCACAGTGCCTT
CAGAAGTTCTTCTCCAGACCGAGCTGCAGAACCACACGATGAGCCAGCACGCACAGAG
AGCGGACCGACGCGTACGCGGCCGCTCGAGCAGAACTCATCTCAGAAGAGGATCTGGCAGCAAATGAT
ATCCTGGATTACAAGGATGACGACGATAAGGTTTAA

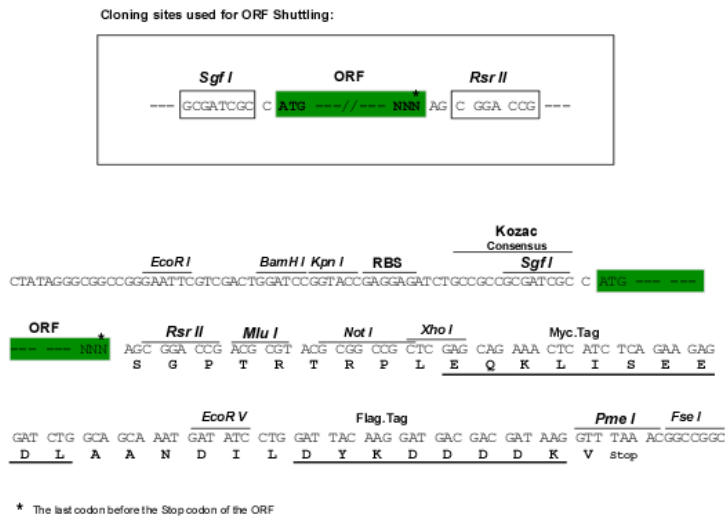
Protein Sequence: >Peptide sequence encoded by RC218703
 Blue=ORF Red=Cloning site Green=Tag(s)

MHKKRVEEGEASDFSLAWDSVTAAGGLEGEPECDQKTSRALEDNRNSVTSQEERNEDDEDEMEDESIYTC
 DHCQQDFESLADLTDHRAHRCPGDGGDDDPQLSWVASSPSSKDVASPTQMIGDGCGLGEEEGTGLPY
 PCQFCDKSFIRLSYLKRHEQIHSDKLPFKCTYCSRLFKHKRSRDRHIKLTGDKKYHCHCEAAFSRSD
 HLKIHLLKTHSSSKPFKCTVCKRGFSSTSSLQSHMQAHKKNEHLAKSEKEAKKDDFMCDYCEDTFSQTE
 ELEKHVLRHPQLSEKADLQCIHCPEVFVDENTLLAHIHQAHANQKHKCPMCEQFSSVEGVYCHLDSH
 RQPDSSNHSVSPDPVLGVSASMSSATPDSSASVERGSTPDSTLKPRLRGQKKMRDDGQGWTKVVYSCPYC
 SKRDFNSLAVLEIHLKTIHADKPQQSHTCQICLDSMPTLYNLNEHVRKLHKNHAYPVMQFGNISAFHCN
 YCPEMFADINSLQEHIRVSHCGPNANPSDGNNAFFCNQCSMGFLTESSLTEHIQQAHCSVGSAKLES
 VQPTQSFMEVYSCPYCTNSPIFGSILKLTKHIKENHKNIPLAHSKSKAEQSPVSSDVEVSSPKRQRLS
 ASANSISNGEYPCNQCDLKFNFESFQTHLKLHLELLLRKQACPCKEDFDSQESLLQHLTVHYMTTST
 HYVCECDKQFSSVDDLQKHLLDMHTFVLYHCTLCQEVFDSKVSIVVHLAVKHSNEKKMYRCTACNWF
 RKEADLQVHVKSHLGNPAKAHKCIFCGETFSTEVELQCHITTHSKYCNCKFCSKAFHAIILLEKHLRE
 KHCVFDAATENGTANGVPPMATKKAEPADLQGMMLLNPEAPNSHEASEDDVDASEPMYGCDCGAAATM
 EVLLQNHRLRDHNRPGEDDGSRKAEIFKGSKCNVCSRTFFSENGLREHLQTHRPAKHMYMCPICGE
 RFPSSLTLTEHKVTHSKSLDTGTCRICKMPLQSEEEFIEHCQMHPDLRNSLTGFRVCVCMQTVTSTLEL
 KIHGTFHMQLAGSSAASSPNGQGLQKLYKCALCLKEFRSKQDLVKLDVNGLPYGLCAGCMARSANGQV
 GGLAPPEPADRPCAGLRCECSVKFESAEDLESHMQVDHRDLTPETSGPRKGTQTSVPVPRKTYQCIKC
 QMTFENEREQIIVANHMIIEGINHECKLNCQMFDSAPAKLLCHLIEHSFEGMGGTFKCPVCFTVFVQAN
 KLQQHIFAVHGQEDKIYDCSQCPQKFFQTELQNHMTMSQHAQ
 SGPTRTRPLEQKLISEEDLAANDILDYKDDDDKV

Chromatograms: https://cdn.origene.com/chromatograms/mg4943_h09.zip

Restriction Sites: SgfI-RsrII

Cloning Scheme:

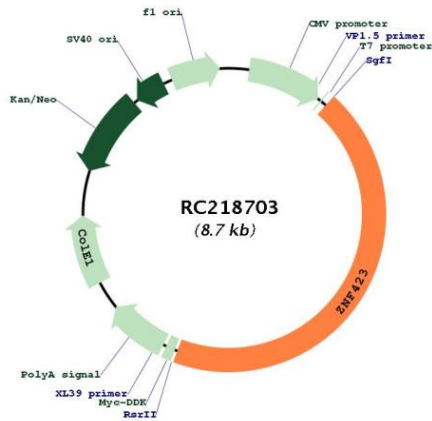


ACCN: NM_015069

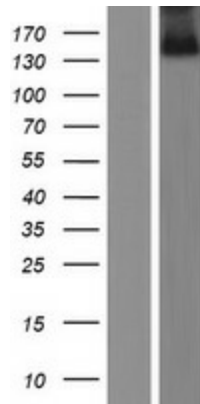
ORF Size: 3861 bp

| | |
|-------------------------------|--|
| OTI Disclaimer: | The molecular sequence of this clone aligns with the gene accession number as a point of reference only. However, individual transcript sequences of the same gene can differ through naturally occurring variations (e.g. polymorphisms), each with its own valid existence. This clone is substantially in agreement with the reference, but a complete review of all prevailing variants is recommended prior to use. More info |
| OTI Annotation: | This clone was engineered to express the complete ORF with an expression tag. Expression varies depending on the nature of the gene. |
| Components: | The ORF clone is ion-exchange column purified and shipped in a 2D barcoded Matrix tube containing 10ug of transfection-ready, dried plasmid DNA (reconstitute with 100 ul of water). |
| Reconstitution Method: | <ol style="list-style-type: none">1. Centrifuge at 5,000xg for 5min.2. Carefully open the tube and add 100ul of sterile water to dissolve the DNA.3. Close the tube and incubate for 10 minutes at room temperature.4. Briefly vortex the tube and then do a quick spin (less than 5000xg) to concentrate the liquid at the bottom.5. Store the suspended plasmid at -20°C. The DNA is stable for at least one year from date of shipping when stored at -20°C. |
| RefSeq Size: | 4846 bp |
| RefSeq ORF: | 3855 bp |
| Locus ID: | 23090 |
| UniProt ID: | Q2M1K9 |
| Cytogenetics: | 16q12.1 |
| Domains: | zf-C2H2 |
| MW: | 144.8 kDa |
| Gene Summary: | The protein encoded by this gene is a nuclear protein that belongs to the family of Kruppel-like C2H2 zinc finger proteins. It functions as a DNA-binding transcription factor by using distinct zinc fingers in different signaling pathways. Thus, it is thought that this gene may have multiple roles in signal transduction during development. Mutations in this gene are associated with nephronophthisis-14 and Joubert syndrome-19. Alternatively spliced transcript variants encoding different isoforms have been found for this gene. [provided by RefSeq, Oct 2012] |

Product images:



Circular map for RC218703



Western blot validation of overexpression lysate (Cat# [LY414807]) using anti-DDK antibody (Cat# [TA50011-100]). Left: Cell lysates from untransfected HEK293T cells; Right: Cell lysates from HEK293T cells transfected with RC218703 using transfection reagent MegaTran 2.0 (Cat# [TT210002]).