

Product datasheet for **RC218700**

DYNLL1 (NM_001037495) Human Tagged ORF Clone

Product data:

Product Type: Expression Plasmids
Product Name: DYNLL1 (NM_001037495) Human Tagged ORF Clone
Tag: Myc-DDK
Symbol: DYNLL1
Synonyms: DLC1; DLC8; DNCL1; DNCLC1; hdlc1; LC8; LC8a; PIN
Mammalian Cell Selection: Neomycin
Vector: pCMV6-Entry (PS100001)
E. coli Selection: Kanamycin (25 ug/mL)
ORF Nucleotide Sequence: >RC218700 ORF sequence
Red=Cloning site Blue=ORF Green=Tags(s)

TTTTGTAATACGACTCACTATAGGGCGGCCGGAATTCGTCGACTGGATCCGGTACCGAGGAGATCTGCC
GCC**CGATCGCC**

ATGTGCGACCGAAAGGCCGTGATCAAAAATGCGGACATGTCGGAAGAGATGCAACAGGACTCGGTGGAGT
GCGCTACTCAGGCGCTGGAGAAATACAACATAGAGAAGGACATTGCGGCTCATATCAAGAAGGAATTTGA
CAAGAAGTACAATCCCACCTGGCATTGCATCGTGGGAGGAACTTCGGTAGTTATGTGACACATGAAACC
AAACACTTCATCTACTTCTACCTGGCCAAGTGGCCATTCTTCTGTTCAAATCTGGT

ACGCGTACGCGGCCGCTCGAGCAGAAACTCATCTCAGAAGAGGATCTGGCAGCAAATGATATCCTGGATT
ACAAGGATGACGACGATAAGGTTTAA

Protein Sequence: >RC218700 protein sequence
Red=Cloning site Green=Tags(s)

MCDRKAVIKNADMSEEMQQDSVECATQALEKYNIEKDIAAHIKKEFDKYNPTWHCIVGRNFGSYVTHET
KHFIYFYLGQVAILLFKSG

TRTRPLEQKLISEEDLAANDILDYKDDDDKV

Chromatograms: https://cdn.origene.com/chromatograms/mk6446_h04.zip

Restriction Sites: Sgfl-Mlul



[View online »](#)

Cloning Scheme:


ACCN: NM_001037495

ORF Size: 267 bp

OTI Disclaimer: The molecular sequence of this clone aligns with the gene accession number as a point of reference only. However, individual transcript sequences of the same gene can differ through naturally occurring variations (e.g. polymorphisms), each with its own valid existence. This clone is substantially in agreement with the reference, but a complete review of all prevailing variants is recommended prior to use. [More info](#)

OTI Annotation: This clone was engineered to express the complete ORF with an expression tag. Expression varies depending on the nature of the gene.

Components: The ORF clone is ion-exchange column purified and shipped in a 2D barcoded Matrix tube containing 10ug of transfection-ready, dried plasmid DNA (reconstitute with 100 ul of water).

Reconstitution Method:

1. Centrifuge at 5,000xg for 5min.
2. Carefully open the tube and add 100ul of sterile water to dissolve the DNA.
3. Close the tube and incubate for 10 minutes at room temperature.
4. Briefly vortex the tube and then do a quick spin (less than 5000xg) to concentrate the liquid at the bottom.
5. Store the suspended plasmid at -20°C. The DNA is stable for at least one year from date of shipping when stored at -20°C.

RefSeq: [NM_001037495.2](#)

RefSeq Size: 747 bp

RefSeq ORF: 270 bp

Locus ID: 8655

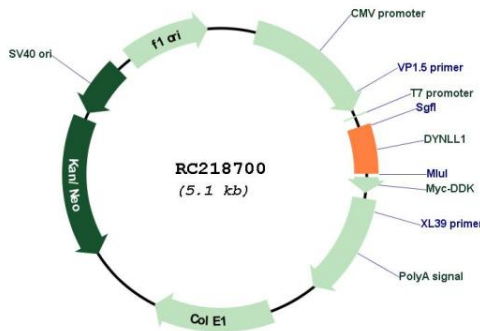
UniProt ID: [P63167](#)

Cytogenetics: 12q24.31

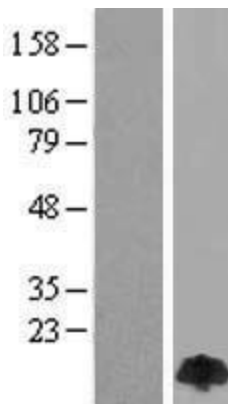
MW: 10.4 kDa

Gene Summary: Cytoplasmic dyneins are large enzyme complexes with a molecular mass of about 1,200 kD. They contain two force-producing heads formed primarily from dynein heavy chains, and stalks linking the heads to a basal domain, which contains a varying number of accessory intermediate chains. The complex is involved in intracellular transport and motility. The protein described in this record is a light chain and exists as part of this complex but also physically interacts with and inhibits the activity of neuronal nitric oxide synthase. Binding of this protein destabilizes the neuronal nitric oxide synthase dimer, a conformation necessary for activity, and it may regulate numerous biologic processes through its effects on nitric oxide synthase activity. Alternate transcriptional splice variants have been characterized. [provided by RefSeq, Jul 2008]

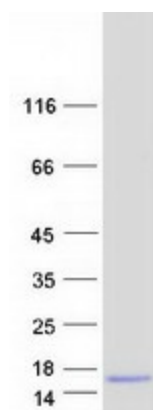
Product images:



Circular map for RC218700



Western blot validation of overexpression lysate (Cat# [LY418456]) using anti-DDK antibody (Cat# [TA50011-100]). Left: Cell lysates from untransfected HEK293T cells; Right: Cell lysates from HEK293T cells transfected with [RC218752] using transfection reagent MegaTran 2.0 (Cat# [TT210002]).



Coomassie blue staining of purified DYNLL1 protein (Cat# [TP318700]). The protein was produced from HEK293T cells transfected with DYNLL1 cDNA clone (Cat# RC218700) using MegaTran 2.0 (Cat# [TT210002]).