

Product datasheet for RC218693

TEAD4 (NM_201441) Human Tagged ORF Clone

Product data:

Product Type:	Expression Plasmids
Product Name:	TEAD4 (NM_201441) Human Tagged ORF Clone
Tag:	Myc-DDK
Symbol:	TEAD4
Synonyms:	EFTR-2; hrTEF-1B; RTEF1; TCF13L1; TEF-3; TEF3; TEFR-1
Mammalian Cell Selection:	Neomycin
Vector:	pCMV6-Entry (PS100001)
E. coli Selection:	Kanamycin (25 ug/mL)
ORF Nucleotide Sequence:	>RC218693 representing NM_201441 Red=Cloning site Blue=ORF Green=Tags(s)

TTTTGTAATACGACTCACTATAGGGCGGCCGGAATTCGTCGACTGGATCCGGTACCGAGGAGATCTGCC
GCC**CGATCGC**

CTGGATCCGGTACCGAGGAGATCTGCCGCCGGATCGCCTTGGAGGGCACGGCCGGCACCATTACCTCCA
ACGAGTGGAGCTCTCCACCTCCCCTGAGGGGAGCACCGCCTCTGGGGCAGTCAGGCACTGGACAAGCC
CATCGACAATGACGCAGAGGGCGTGTGGAGCCGGATATTGAGCAGAGTTCCAGGAGGCCCTCGCCATC
TACCCGCCCTGTGGCAGGCGAAAATCATCTGTGGACGAGGGCAAGATGTATGGTCGGAACGAGCTGA
TTGCCCGTACATCAAGCTCCGGACAGGAAGACCCGACCAGGAAGCAGGTCTCCAGCCACATCCAGGT
GCTGGCTCGTAAAGCTCGCGAGATCCAGGCCAAGCTAAAGTTTTGGCAAGGAGCTTTGCCAGGCCAA
GCCGGAACGTCCCATGATGTGAAGCCTTCTCTCAGCAAACCTATGCTGTCCAGCCTCCGCTGCCTCTGC
CAGGGTTTGGTCTCCTGCAGGGCCCGCCCATCGCCCTCTGCGCCCCGGCACCCCATGGCAGGGCCG
CAGCGTGGCCAGCTCCAAGCTCTGGATGTTGGAGTTCTCTGCCTTCTGGAGCAGCAGCAGGACCCGGAC
ACGTACAACAAGCACCTGTTCTGTCACATTGGCCAGTCCAGCCCAAGCTACAGCGACCCCTACCTCGAAG
CCGTGGACATCCGCCAAATCTATGACAAATCCCGGAGAAAAGGGTGGACTCAAGGATCTCTTCGAACG
GGGACCCCTCCAATGCCTTTTTCTGTGAAGTTCTGGGACAGCTCAACACCAACATCGAGGATGAAGGC
AGCTCTTCTATGGGTCTCCAGCCAGTATGAGAGCCCCGAGAACATGATCATCACCTGCCTCCAGGAG
TCTGCTCTTTCGCAAGCAGGTGGTGGAGAAAGTTGAGACAGAGTATGCTCGCTATGAGAATGGACTA
CTTTACCGCATCCACCGTCCCGCTCTGTGAGTACATGATCAACTTATCCACAAGCTCAAGCACCTC
CCTGAGAAGTACATGATGAACAGCGTGTGGAGAACTTACCATCCTGCAGGTGGTCAACACAGAGACA
CACAGGAGACCTTGTGTGCATTGCCTATGTCTTTGAGGTGTCAGCCAGTGAACACGGGGCTCAGCACCA
CATCTACAGGCTGGTGAAGAA

ACGCGTACGCGGCCGCTCGAGCAGAAACTCATCTCAGAAGAGGATCTGGCAGCAAATGATATCCTGGATT
ACAAGGATGACGACGATAAGGTTTAA



Protein Sequence: >RC218693 representing NM_201441
Red=Cloning site Green=Tags(s)

LDPVPRRSAAIALEGTAGTITSNEWSSPTSPEGSTASGGSQALDKPIDNDAEGVWSPDIEQSFQEALAI
 YPPCGRRKIILSDEGKMYGRNELIARYIKLRTGKTRTRKQVSSHIQVLARRKAREIQAKLFWQGalPGQ
 AGTSHDVKPFSSQQTAVQPLPLPGFESPAGPAPSPSAPPAPPWQGRSVASSKLWMLFSAFLEQQQDDP
 TYNKHLFVHIGQSSPSYSDPYLEAVDIRQIYDKFPEKKGGLKDLFERGPSNAFFLVKFWADLNTNIEDEG
 SSFYGVSSQYESPENMIITCSTKVCSTKQVVEKVEYARYENGHYSYR.IHRSPLCEYMINFIHKLKHL
 PEKYMNSVLENFTILQVVTNRDTQETLLCIAVFEVSASEHGAQHIIYRLVKE

TRTRPLEQKLISEEDLAANDILDYKDDDDKV

Chromatograms: https://cdn.origene.com/chromatograms/mk8020_g09.zip

Restriction Sites: SgfI-MluI

Cloning Scheme:



ACCN: NM_201441

ORF Size: 1212 bp

OTI Disclaimer: The molecular sequence of this clone aligns with the gene accession number as a point of reference only. However, individual transcript sequences of the same gene can differ through naturally occurring variations (e.g. polymorphisms), each with its own valid existence. This clone is substantially in agreement with the reference, but a complete review of all prevailing variants is recommended prior to use. [More info](#)

OTI Annotation: This clone was engineered to express the complete ORF with an expression tag. Expression varies depending on the nature of the gene.

Components: The ORF clone is ion-exchange column purified and shipped in a 2D barcoded Matrix tube containing 10ug of transfection-ready, dried plasmid DNA (reconstitute with 100 ul of water).

Reconstitution Method:

1. Centrifuge at 5,000xg for 5min.
2. Carefully open the tube and add 100ul of sterile water to dissolve the DNA.
3. Close the tube and incubate for 10 minutes at room temperature.
4. Briefly vortex the tube and then do a quick spin (less than 5000xg) to concentrate the liquid at the bottom.
5. Store the suspended plasmid at -20°C. The DNA is stable for at least one year from date of shipping when stored at -20°C.

RefSeq Size: 1651 bp

RefSeq ORF: 1176 bp

Locus ID: 7004

UniProt ID: [Q15561](#)

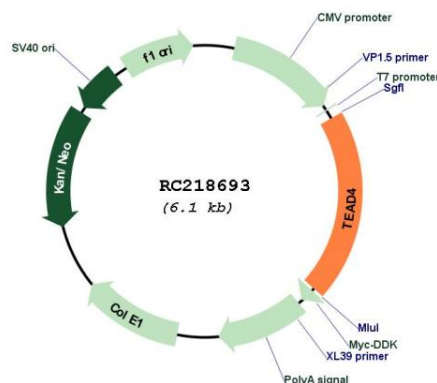
Cytogenetics: 12p13.33

Protein Families: Transcription Factors

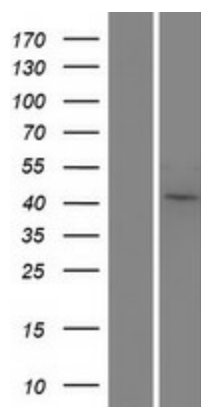
MW: 43.9 kDa

Gene Summary: This gene product is a member of the transcriptional enhancer factor (TEF) family of transcription factors, which contain the TEA/ATTS DNA-binding domain. It is preferentially expressed in the skeletal muscle, and binds to the M-CAT regulatory element found in promoters of muscle-specific genes to direct their gene expression. Alternatively spliced transcripts encoding distinct isoforms, some of which are translated through the use of a non-AUG (UUG) initiation codon, have been described for this gene. [provided by RefSeq, Jul 2008]

Product images:



Circular map for RC218693



Western blot validation of overexpression lysate (Cat# [LY404423]) using anti-DDK antibody (Cat# [TA50011-100]). Left: Cell lysates from untransfected HEK293T cells; Right: Cell lysates from HEK293T cells transfected with RC218693 using transfection reagent MegaTran 2.0 (Cat# [TT210002]).