

Product datasheet for **RC218691**

KRT35 (NM_002280) Human Tagged ORF Clone

Product data:

Product Type:	Expression Plasmids
Product Name:	KRT35 (NM_002280) Human Tagged ORF Clone
Tag:	Myc-DDK
Symbol:	KRT35
Synonyms:	Ha-5; HA5; hHa5; K35; KRTHA5
Mammalian Cell Selection:	Neomycin
Vector:	pCMV6-Entry (PS100001)
E. coli Selection:	Kanamycin (25 ug/mL)



[View online »](#)

ORF Nucleotide Sequence:

>RC218691 representing NM_002280
 Red=Cloning site Blue=ORF Green=Tags(s)

TTTTGTAATACGACTCACTATAGGGCGGCCGGAATTCGTCGACTGGATCCGGTACCGAGGAGATCTGCC
 GCC**CGCATCGCC**

ATGGCTTCCAATGCCTCAAGGCCGGCTTCTCTTCTGGTCTCTCAAGAGCCAGGAGGGGCCAGTGGGG
 GCTCCACTCGTGTGCCAATGTAAGTCCAGCAGCTCTTGCAAGCTTCCAAGTCTCTCCCTGTGGCCAG
 AAGTTTCTCTGCCTGCTCAGTGGGTCTGGGCAGAAGCAGCTACAGGGCCACCAGTGCCTCCCTGCTCTC
 TGCTCCCTGCTGGAGGCTTCGCTACCAGCTACAGTGGGGTGGGGGCTGGTTTGGGGAGGGCATCTCA
 CTGGCAATGAGAAGGAGACCATGCAATCCCTGAACGACCGCTGGCCGGTACCTGGAGAAGGTGCGTCA
 GCTGGAGCAGGAGAACGCCAGCCTGGAGAGCCGCATCCGTGAGTGGTGTGAGCAGCAGGTCCCCTACATG
 TGCCCTGACTACCAGTCTACTCCGGACCATCGAGGAGCTCCAGAAGAAGACTCTATGCAGCAAGGCTG
 AGAATGCCAGGCTGGTGGTGGAGATTGACAATGCCAAATTGGCTGCAGATGACTTCAGGACCAAGTATGA
 GACGGAGGTGTCCTGCGGCAGCTGGTGGAGTCCAGACATCAACGGCCTGCGCAGGATCCTGGATGACCTG
 ACCCTGTGCAAGTCTGACCTGGAGGCCAGGTGGAGTCCCTGAAGGAGGAGCTGCTGCTGCAAGAAGA
 ACCATGAGGAGGAAGTGAAGTCACTGCGCTGCCAACTTGGTGACCGCCTCAATGTTGAGGTGGACGCTG
 CCCACCTGTTGACCTGAACCGAGTTCTGGAGGAGATGAGGTGCCAGTATGAAACCCTGGTGGAGAATAAC
 CGCCGGGATGCTGAAGACTGGTGGACACCCAGAGTGAAGGAGTGAACAGCAGGTGGTGTCCAGCTCAG
 AGCAGTTGCAGTCTGCCAGGCAGAGATCATCGAGCTGAGACGCACGGTCAACGCCCTGGAGATTGAGCT
 GCAGGCTCAGCACAGCATGAGAGATGCTTTGGAATCCACCCTGGCAGAGACGGAGGCCCGCTATAGCTCC
 CAGCTGGCCAGATGCAGTGCATGATCACCAACGTGGAGGCCAGCTGGCCGAGATCCGGGCTGACCTGG
 AGCGGCAGAACCCAGGAGTACCAGGTGCTGCTGGACGTCGGGGCCGGCTGGAGTGTGAGATCAACACTG
 CCGGGCCCTGCTGGAGAGTGAAGACAGCAAGCTCCCTGTAACCCATGTGCACCTGACTACTCACCTCC
 AAGTCATGCCTTCCCTGTCTTCTGCGGCTCCTGCGGTCTAGTGCAGCCCGCACAAACTGCAGCCCC
 GCCCATTTGTGTGCCCTGCCAGGGGGTGGTTC

ACGCGTACGCGGCCGCTCGAGCAGAACTCATCTCAGAAGAGGATCTGGCAGCAATGATATCCTGGATT
 ACAAGGATGACGACGATAAGGTTTAA

Protein Sequence:

>RC218691 representing NM_002280
 Red=Cloning site Green=Tags(s)

MASKCLKAGFSSGSLKSPGGASGGSTRVSAMYSSSCKLPSLSPVARFSACSVGLGRSSYRATSCLPAL
 CLPAGGFATSYSGGGWFEGEILTGNEKETMQSLNDRLAGYLEKVRQLEQENASLESRIREWCEQQVPYM
 CPDYQSYFRTIEELQKKTLCskaENARLVVEIDNAKLAADDFRTKYETEVSRLQLVESDINGLRRILDDL
 TLCKSDLEAQVESLKEELLCLKKNHEEEVNSLRQLGDRLNVEVDAAPPVDLNRVLEEMRCQYETLVENN
 RRDAEDWLDTQSEELNQVVSSEQLQSCQAEIIELRRTVNALEIELQAQHSMRDALESTLAETEARYSS
 QLAQMCMITNVEAQLAEIRADLERQNQEYQVLLDVRARLECEINTYRGLLESEDSKLPNPCAPDYSPS
 KSCLPCLPAASCGPSAARTNCSRPICVPCPGGRF

TRTRPLEQKLISEEDLAANDILDYKDDDDKV

Chromatograms:

https://cdn.origene.com/chromatograms/mk8020_g11.zip

Restriction Sites:

Sgfl-Mlul

Cloning Scheme:


ACCN: NM_002280

ORF Size: 1365 bp

OTI Disclaimer: The molecular sequence of this clone aligns with the gene accession number as a point of reference only. However, individual transcript sequences of the same gene can differ through naturally occurring variations (e.g. polymorphisms), each with its own valid existence. This clone is substantially in agreement with the reference, but a complete review of all prevailing variants is recommended prior to use. [More info](#)

OTI Annotation: This clone was engineered to express the complete ORF with an expression tag. Expression varies depending on the nature of the gene.

Components: The ORF clone is ion-exchange column purified and shipped in a 2D barcoded Matrix tube containing 10ug of transfection-ready, dried plasmid DNA (reconstitute with 100 ul of water).

- Reconstitution Method:**
1. Centrifuge at 5,000xg for 5min.
 2. Carefully open the tube and add 100ul of sterile water to dissolve the DNA.
 3. Close the tube and incubate for 10 minutes at room temperature.
 4. Briefly vortex the tube and then do a quick spin (less than 5000xg) to concentrate the liquid at the bottom.
 5. Store the suspended plasmid at -20°C. The DNA is stable for at least one year from date of shipping when stored at -20°C.

RefSeq: [NM_002280.4](#), [NP_002271.3](#)

RefSeq Size: 1688 bp

RefSeq ORF: 1368 bp

Locus ID: 3886

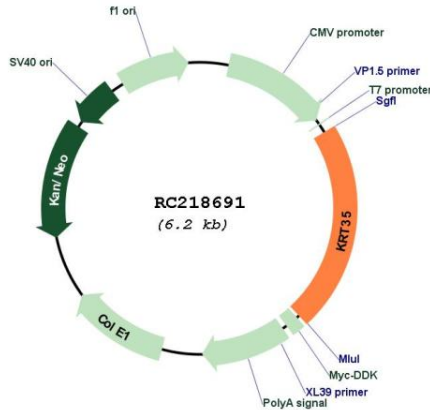
UniProt ID: [Q92764](#)

Cytogenetics: 17q21.2

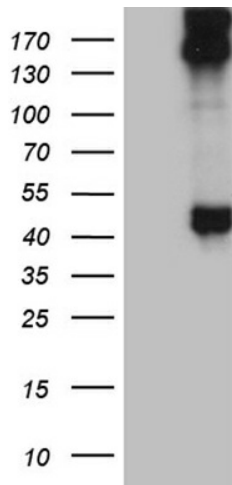
MW: 50.2 kDa

Gene Summary: The protein encoded by this gene is a member of the keratin gene family. This type I hair keratin is an acidic protein which heterodimerizes with type II keratins to form hair and nails. The type I hair keratins are clustered in a region of chromosome 17q12-q21 and have the same direction of transcription. [provided by RefSeq, Jul 2008]

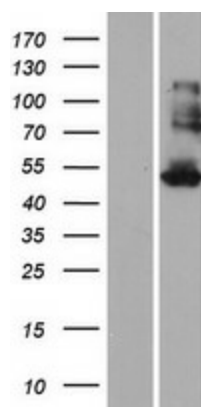
Product images:



Circular map for RC218691



HEK293T cells were transfected with the pCMV6-ENTRY control (Cat# [PS100001], Left lane) or pCMV6-ENTRY KRT35 (Cat# RC218691, Right lane) cDNA for 48 hrs and lysed. Equivalent amounts of cell lysates (5 ug per lane) were separated by SDS-PAGE and immunoblotted with anti-KRT35 (Cat# [TA811831])(1:2000). Positive lysates [LY419432] (100ug) and [LC419432] (20ug) can be purchased separately from OriGene.



Western blot validation of overexpression lysate (Cat# [LY419432]) using anti-DDK antibody (Cat# [TA50011-100]). Left: Cell lysates from untransfected HEK293T cells; Right: Cell lysates from HEK293T cells transfected with RC218691 using transfection reagent MegaTran 2.0 (Cat# [TT210002]).