

Product datasheet for **RC218688**

alpha Adducin (ADD1) (NM_014190) Human Tagged ORF Clone

Product data:

Product Type:	Expression Plasmids
Product Name:	alpha Adducin (ADD1) (NM_014190) Human Tagged ORF Clone
Tag:	Myc-DDK
Symbol:	alpha Adducin
Synonyms:	ADDA
Mammalian Cell Selection:	Neomycin
Vector:	pCMV6-Entry (PS100001)
E. coli Selection:	Kanamycin (25 ug/mL)



[View online »](#)

ORF Nucleotide
Sequence:

>RC218688 representing NM_014190
Red=Cloning site Blue=ORF Green=Tags(s)

TTTTGTAATACGACTCACTATAGGGCGGCCGGAATTCGTCGACTGGATCCGGTACCGAGGAGATCTGCC
GCC**CGGATCGCC**

ATGAATGGTGATTCTCGTCTGCGGTGGTGACCTCACCACCCCGACCACAGCCCTCACAAGGAGAGGT
ACTTCGACCGAGTAGATGAGAACAACCCAGAGTACTTGAGGGAGAGGAACATGGCACCAGACCTTCGCCA
GGACTTCAACATGATGGAGCAAAAAGAAGAGGGTGTCCATGATTCTGCAAAGCCCTGCTTTCTGTGAAGAA
TTGGAATCAATGATACAGGAGCAATTTAAGAAGGGGAAGAACCCACAGGCCTATTGGCATTACAGCAGA
TTGCAGATTTTATGACCACGAATGTACCAATGTCTACCCAGCAGCTCCGCAAGGAGGGATGGCTGCCTT
AAACATGAGTCTTGGTATGGTGACTCCTGTGAACGATCTAGAGGATCTGATTCTATTGCGTATGACAAA
GGAGAGAAGTTATTACGGTGTAAATTGGCAGCGTTTTATAGACTAGCAGATCTCTTTGGGTGGTCTCAGC
TTATCTACAATCATATCACAACCAGAGTGAACCTCCGAGCAGGAACACTTCCTCATTGTCCCTTTGGGCT
TCTTTACAGTGAAGTACTGCATCCAGTTTGGTTAAGATCAATCTACAAGGAGATATAGTAGATCGTGGA
AGCACTAATCTGGGAGTGAATCAGGCCGCTTACACTTACACTCTGCAATTTATGCTGCACGCCCGGACG
TGAAGTGCCTGCTGCACATTCACACCCAGCAGGGGCTGCGGTCTCTGCAATGAAATGTGGCCTCTTGCC
AATCTCCCGGAGGCGCTTCCCTTGGAGAAGTGGCTTATCATGACTACCATGGCATTCTGGTTGATGAA
GAGGAAAAAGTTTTGATTGAGAAAAATCTGGGGCCTAAAAGCAAGGTTCTTATTCTCCGGAACCATGGGC
TCGTGTCAAGTGGAGAGAGCGTTGAGGAGGCTTCTATTACATCCATAACCTTGTGGTTGCCTGTGAGAT
CCAGGTTCAACTCTGGCCAGTGCAGGAGGACCAGACAATAGTCTCTGCTGAATCCTGAGAAGTACAAA
GCCAAGTCCCGTTCCCGAGGCTCCTGGTAGGGGAAGGCACTGGATCGCCTCCCAAGTGGCAGATTGGTG
AGCAGGAATTTGAAGCCCTCATGCGGATGCTCGATAATCTGGGCTACAGAAGTGGTACCCTTATCGATA
CCCTGCTCTGAGAGAGAAGTCTAAAAAATACAGCGATGTGGAGGTTCTGCTAGTGTACAGGTTACTCC
TTTGCTAGTGACGGTGATTCGGGCACTTCTCCCACTCAGACACAGTTTTCAGAAGCAGCAGCGGGAGA
AGACAAGATGGCTGAACTCTGGCCGGGCGACGAAGCTTCCGAGGAAGGGCAGAATGGAAGCAGTCCCAA
GTCGAAGACTAAGTGGACTAAAGAGGATGGACATAGAATTCACCTCTGCTGTCCCTAACCTGTTTGT
CCATTGAACACTAACCCAAAAGAGGTCCAGGAGATGAGGAACAAGATCCGAGAGCAGAATTTACAGGACA
TTAAGACGGCTGGCCCTCAGTCCAGGTTTTGTGTGGTGTAGTGTGACAGGAGCCTCGTCCAGGGAGA
GCTGGTGACGGCCTCAAGGCCATCATTGAAAAGGAGTACCAGCCCCACGTATTGTGAGCACCACGGGC
CCCAACCCCTTACCACACTCACAGACCGTGGAGTGGAGGAGTACCGCAGGGAGGTGGAGAGGAAGCAGA
AGGGCTCTGAAGAGAATCTGGACGAGGCTAGAGAACAGAAAAGAAAGAGTCTCCAGACCAGCCTGCGGT
CCCCACCCGCTCCAGCACTCCATCAAGCTGGAGGAAGGAGACGGATGCGCTAGAGAGTACCTGTTA
CCC

ACGCGTACGCGGCCGCTCGAGCAGAACTCATCTCAGAAGAGGATCTGGCAGCAATGATATCCTGGATT
ACAAGGATGACGACGATAAGGTTTAA

Protein Sequence: >RC218688 representing NM_014190
Red=Cloning site Green=Tags(s)

MNGDSRAAVVTSPPPTTAPHKERYFDRVDENNPEYLRRNMAPDLRQDFNMMEQKKRVSMILQSPAFCEE
 LESMIQEQFKGKNPTGLLLALQQIADFMTTNPVNPVYPAAPQGGMAALNMSLGMVTPVNDLRGSDSIAYDK
 GEKLLRCKLAIFYRLADLFGWSQLIYNHITTRVNSEQEHFLIVPFGLLYSEVTASSLVKINLQGDIVDRG
 STNLGVNQAGFTLHSAIYAARPDVKCVVHIHTPAGAAVSAMKCGLLPISPEALSLGEVAYHDYHGILVDE
 EEKVLIQKNLGPVSKVLILRNHGLVSVGESVEEAFYYIHNLVVACEIQVRTLASAGGPDNLVLLNPEKYK
 AKSRSPGSPVGEVGTGSPPKWQIGEQEFEALMRMLDNLGYRTGYPYRYPALREKSKKYSDEVVPASVTGYS
 FASDGDGSGTCSPLRHSFQKQREKTRWLNSSRGDEASEEGQNGSSPKSKTKWKEDGHRTSTSAVPLNFV
 PLNTNPKVEQEMRNKIREQNLQDIKTAGPQSQVLCGVVMDRSLVQGELVASKAIIEKEYQPHVIVSTTG
 PNPFTTLTDRELEEYRREVERKQKQSEENLDEAREQKEKSPDPQAVPHPPPSTPIKLEEGDGCAREYLL
 P

TRTRPLEQKLISEEDLAANDILDYKDDDDKV

Chromatograms: https://cdn.origene.com/chromatograms/mk8070_f01.zip

Restriction Sites: SgfI-MluI

Cloning Scheme:



ACCN: NM_014190

ORF Size: 1893 bp

OTI Disclaimer: The molecular sequence of this clone aligns with the gene accession number as a point of reference only. However, individual transcript sequences of the same gene can differ through naturally occurring variations (e.g. polymorphisms), each with its own valid existence. This clone is substantially in agreement with the reference, but a complete review of all prevailing variants is recommended prior to use. [More info](#)

OTI Annotation: This clone was engineered to express the complete ORF with an expression tag. Expression varies depending on the nature of the gene.

Components: The ORF clone is ion-exchange column purified and shipped in a 2D barcoded Matrix tube containing 10ug of transfection-ready, dried plasmid DNA (reconstitute with 100 ul of water).

Reconstitution Method:

1. Centrifuge at 5,000xg for 5min.
2. Carefully open the tube and add 100ul of sterile water to dissolve the DNA.
3. Close the tube and incubate for 10 minutes at room temperature.
4. Briefly vortex the tube and then do a quick spin (less than 5000xg) to concentrate the liquid at the bottom.
5. Store the suspended plasmid at -20°C. The DNA is stable for at least one year from date of shipping when stored at -20°C.

RefSeq: [NM_014190.4](#)

RefSeq Size: 4004 bp

RefSeq ORF: 1896 bp

Locus ID: 118

UniProt ID: [P35611](#)

Cytogenetics: 4p16.3

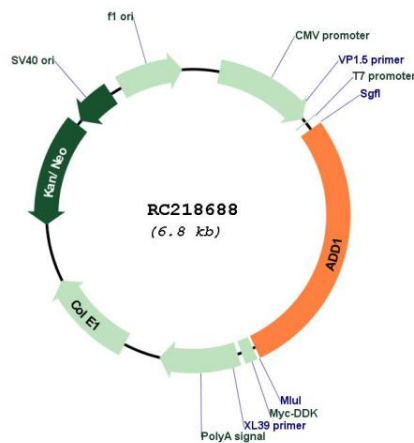
Domains: Aldolase_II

Protein Families: Druggable Genome

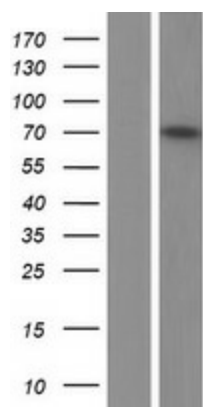
MW: 69.8 kDa

Gene Summary: Adducins are a family of cytoskeletal proteins encoded by three genes (alpha, beta, and gamma). Adducin acts as a heterodimer of the related alpha, beta, or gamma subunits. The protein encoded by this gene represents the alpha subunit. Alpha- and beta-adducin include a protease-resistant N-terminal region and a protease-sensitive, hydrophilic C-terminal region. Adducin binds with high affinity to Ca(2+)/calmodulin and is a substrate for protein kinases A and C. [provided by RefSeq, Aug 2017]

Product images:



Circular map for RC218688



Western blot validation of overexpression lysate (Cat# [LY415438]) using anti-DDK antibody (Cat# [TA50011-100]). Left: Cell lysates from untransfected HEK293T cells; Right: Cell lysates from HEK293T cells transfected with RC218688 using transfection reagent MegaTran 2.0 (Cat# [TT210002]).