

## Product datasheet for **RC218682**

### **TRAF3 (NM\_003300) Human Tagged ORF Clone**

#### **Product data:**

Product Type:	Expression Plasmids
Product Name:	TRAF3 (NM_003300) Human Tagged ORF Clone
Tag:	Myc-DDK
Symbol:	TRAF3
Synonyms:	CAP-1; CAP1; CD40bp; CRAF1; IIAE5; LAP1; RNF118
Mammalian Cell Selection:	Neomycin
Vector:	pCMV6-Entry (PS100001)
E. coli Selection:	Kanamycin (25 ug/mL)



[View online »](#)

**ORF Nucleotide Sequence:**

>RC218682 ORF sequence  
 Red=Cloning site Blue=ORF Green=Tags(s)

TTTTGTAATACGACTCACTATAGGGCGGCCGGAATTCGTCGACTGGATCCGGTACCGAGGAGATCTGCC  
 GCC**CGGATCGCC**

ATGGAGTCGAGTAAAAGATGGACTCTCCTGGCGCGTGCAGACTAACCCGCCGCTAAAGCTGCACACTG  
 ACCGCAGTGTGGGACGCCAGTTTTTGTCCCTGAACAAGGAGTTACAAGGAAAAGTTTGTGAAGACCGT  
 GGAGGACAAGTACAAGTGTGAGAAGTGCCACCTGGTGTGTGCAGCCGAAGCAGACCGAGTGTGGGCAC  
 CGTTCTGCGAGAGCTGCATGGCGGCCCTGCTGAGCTCTTCAAGTCCAAAATGTACAGCGTGTCAAGAGA  
 GCATCGTTAAAGATAAGGTGTTAAGGATAATTGCTGCAAGAGAGAAAATTCTGGCTCTTCAGATCTATTG  
 TCGGAATGAAAGCAGAGGTTGTGACAGAGCAGTTAATGCTGGGACATCTGCTGGTGCATTTAAAAATGAT  
 TGCCATTTTGAAGAACTCCATGTGTGCGTCTGACTGCAAAGAAAAGGCTTGAGGAAAGACCTGCGAG  
 ACCACGTGGAGAAGGCGTGTAAATACCGGGAAGCCACATGCAGCCACTGCAAGAGTCAGGTTCCGATGAT  
 CGCGCTGCAGAAACAGAACACCGACTGTCCCTGCGTGGTGGTGTCCCTGCCCTACAAGTGCAGCGTC  
 CAGACTCTCTGAGGAGCGAGTTGAGTGCACACTTGTGAGAGTGTGCAATGCCCCAGCACCTGTAGTT  
 TTAAGCGCTATGGCTGCGTTTTTTCAGGGGACAAAACCAGCAGATCAAGGCCACGAGGCCAGCTCCGCCGT  
 GCAGCAGTCAACCTGCTGAAGGAGTGGAGCAACTCGCTCGAAAAGAAGGTTTCTTGTTCAGAAATGAA  
 AGTGTAGAAAAAACAAGAGCATACAAAGTTTGCACAATCAGATATGTAGCTTTGAAATTGAAATTGAGA  
 GACAAAAGGAAATGCTTCGAAATATGAATCCAAAATCCTTCATTTACAGCGAGTGTAGACAGCCAAGC  
 AGAGAACTGAAGGAGCTTGACAAGGAGATCCGGCCCTCCGGCAGAAGTGGGAGGAAGCAGACAGCATG  
 AAGAGCAGCGTGGAGTCCCTCCAGAACCCTGACCGAGCTGGAGAGCGTGGACAAGAGCCGGGGCAAG  
 TGGCTCGGAACACAGGCCTGCTGGAGTCCCAGCTGACCCGCGATGACCAGATGCTGAGTGCACGACAT  
 CCGCCTAGCCGACATGGACCTGCGCTTCCAGGTTCCGAGACCGCCAGCTACAATGGAGTGTCTCATCTGG  
 AAGATTCGCGACTACAAGCGGCGGAAGCAGGAGCCGTCATGGGGAAGACCCTGTCCCTTACAGCCAGC  
 CTTTCTACACTGGTTACTTTGGCTATAAGATGTGTGCCAGGGTCTACCTGAACGGGGACGGGATGGGGAA  
 GGGGACGCACTTGTGCTGTTTTTGTGTCATCATGCGTGGAGAATATGATGCCCTGCTTCTTGGCCGTTT  
 AAGCAGAAAGTGACACTCATGCTGATGGATCAGGGTCTCTCGACGTCATTTGGGAGATGCATTCAAGC  
 CCGACCCCAACAGCAGCAGCTTCAAGAAGCCACTGGAGAGATGAATATCGCCTCTGGCTGCCAGTCTT  
 TGTGGCCCAAAGTGTCTAGAAAATGGGACATATATTAAGATGATACAATTTTTATTAAGTCATAGTG  
 GATACTTCGGATCTGCCGATCCC

**ACGCGT**ACGCGGCCGCTCGAGCAGAAACTCATCTCAGAAGAGGATCTGGCAGCAAATGATATCCTGGATT  
 ACAAGGATGACGACGATAAGGTTTAA

**Protein Sequence:**

>RC218682 protein sequence  
 Red=Cloning site Green=Tags(s)

MESSKMDSPGALQTNPPLKLHTRDARSAGTPVFVPEQGGYKEKFKVKTVEDKYKCEKCHLVLCSPKQTECGH  
 RFCECMAALLSSSSPKCTACQESIVKDKVFKDNCCKREILALQIYCRNESRGCAEQLMLGHLLVHLKND  
 CHFEELPCVRPDCKEKVLKDLRDHVEKACKYREATCSHCKSQVPMIALQKHEDTDCPCVVVSCPHKCSV  
 QTLRSELSAHLSECVNAPSTCSFKRYGCVFQGTNQQIKAHEASSAVQHVNLLKEWSNSLEKKVSLQNE  
 SVEKNKSIQSLHNQICSFEIEIERQKEMLRNNEKILHLQRVIDSQAELKELDKAIRPFRQNWEEADSM  
 KSSVESLQNRVTELESVDKSAQVARNGLLESQLSRHDQMLSVHDIRLADMDLRFQVLETASYNGVLIW  
 KIRDYKRRKQEAVMGKTLSLYSQPFYTYFGYKMCARVYLNQDGMGKTHLSLFFVIMRGEYDALLPWPFF  
 KQKVTLMLMDQSSRRHLGDAFKPDPNSSSFKKPTGEMNIASGCPVFAQTVLENGTYIKDDTIFIKVIV  
 DTSDLPPD

**TR**TRPLEQKLISEEDLAANDILDYKDDDDKV

**Chromatograms:**

[https://cdn.origene.com/chromatograms/mk6374\\_h12.zip](https://cdn.origene.com/chromatograms/mk6374_h12.zip)

**Restriction Sites:**

Sgfl-Mlul

**Cloning Scheme:**

**ACCN:** NM\_003300

**ORF Size:** 1704 bp

**OTI Disclaimer:** Due to the inherent nature of this plasmid, standard methods to replicate additional amounts of DNA in E. coli are highly likely to result in mutations and/or rearrangements. Therefore, OriGene does not guarantee the capability to replicate this plasmid DNA. Additional amounts of DNA can be purchased from OriGene with batch-specific, full-sequence verification at a reduced cost. Please contact our customer care team at [custsupport@origene.com](mailto:custsupport@origene.com) or by calling 301.340.3188 option 3 for pricing and delivery.

The molecular sequence of this clone aligns with the gene accession number as a point of reference only. However, individual transcript sequences of the same gene can differ through naturally occurring variations (e.g. polymorphisms), each with its own valid existence. This clone is substantially in agreement with the reference, but a complete review of all prevailing variants is recommended prior to use. [More info](#)

**OTI Annotation:** This clone was engineered to express the complete ORF with an expression tag. Expression varies depending on the nature of the gene.

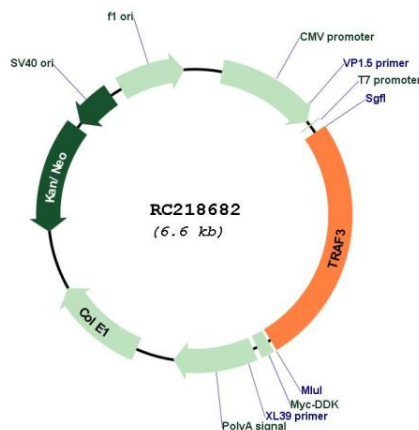
**Components:** The ORF clone is ion-exchange column purified and shipped in a 2D barcoded Matrix tube containing 10ug of transfection-ready, dried plasmid DNA (reconstitute with 100 ul of water).

- Reconstitution Method:**
1. Centrifuge at 5,000xg for 5min.
  2. Carefully open the tube and add 100ul of sterile water to dissolve the DNA.
  3. Close the tube and incubate for 10 minutes at room temperature.
  4. Briefly vortex the tube and then do a quick spin (less than 5000xg) to concentrate the liquid at the bottom.
  5. Store the suspended plasmid at -20°C. The DNA is stable for at least one year from date of shipping when stored at -20°C.

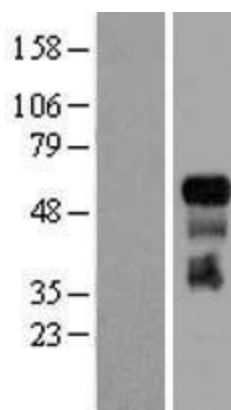
RefSeq:	<a href="#">NM_003300.4</a>
RefSeq Size:	7654 bp
RefSeq ORF:	1707 bp
Locus ID:	7187
UniProt ID:	<a href="#">Q13114</a>
Cytogenetics:	14q32.32
Domains:	zf-TRAF, RING, MATH
Protein Families:	Druggable Genome
Protein Pathways:	Pathways in cancer, RIG-I-like receptor signaling pathway, Small cell lung cancer, Toll-like receptor signaling pathway
MW:	64.5 kDa

**Gene Summary:** The protein encoded by this gene is a member of the TNF receptor associated factor (TRAF) protein family. TRAF proteins associate with, and mediate the signal transduction from, members of the TNF receptor (TNFR) superfamily. This protein participates in the signal transduction of CD40, a TNFR family member important for the activation of the immune response. This protein is found to be a critical component of the lymphotoxin-beta receptor (LTbetaR) signaling complex, which induces NF-kappaB activation and cell death initiated by LTbeta ligation. Epstein-Barr virus encoded latent infection membrane protein-1 (LMP1) can interact with this and several other members of the TRAF family, which may be essential for the oncogenic effects of LMP1. The protein also plays a role in the regulation of antiviral response. Mutations in this are associated with Encephalopathy, acute, infection-induced, herpes-specific 5. [provided by RefSeq, Jul 2020]

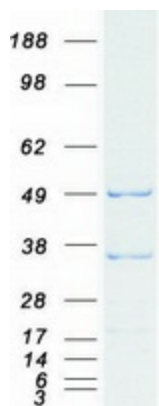
### Product images:



Circular map for RC218682



Western blot validation of overexpression lysate (Cat# [LY418781]) using anti-DDK antibody (Cat# [TA50011-100]). Left: Cell lysates from untransfected HEK293T cells; Right: Cell lysates from HEK293T cells transfected with RC218682 using transfection reagent MegaTran 2.0 (Cat# [TT210002]).



Coomassie blue staining of purified TRAF3 protein (Cat# [TP318682]). The protein was produced from HEK293T cells transfected with TRAF3 cDNA clone (Cat# RC218682) using MegaTran 2.0 (Cat# [TT210002]).