

Product datasheet for RC218681

KCNH1 (NM_172362) Human Tagged ORF Clone

Product data:

Product Type:	Expression Plasmids
Product Name:	KCNH1 (NM_172362) Human Tagged ORF Clone
Tag:	Myc-DDK
Symbol:	KCNH1
Synonyms:	EAG; EAG1; h-eag; hEAG; hEAG1; Kv10.1; TMBTS; ZLS1
Mammalian Cell Selection:	Neomycin
Vector:	pCMV6-Entry (PS100001)
E. coli Selection:	Kanamycin (25 ug/mL)
ORF Nucleotide Sequence:	>RC218681 representing NM_172362 Red=Cloning site Blue=ORF Green=Tags(s)

TTTTGTAATACGACTCACTATAGGGCGGCCGGAATTCGTCGACTGGATCCGGTACCGAGGAGATCTGCC
GCCCGATCGCC

ATGACCATGGCTGGGGCAGGAGGGGACTAGTGGCCCCTCAAACACGTTTCTGGAGAATATTGTTCCGGC
GGTCCAATGATACTAATTTTGTGTTGGGAATGCTCAGATAGTGGACTGGCCTATTGTGTACAGCAATGA
TGGATTTTGAAGCTGTCTGGCTATCACAGGGCAGAAGTATGCAAAAAAGCAGCACCTGCAGTTTTATG
TATGGGGAGCTGACTGATAAAGACACGATTGAAAAAGTGGCAGCAACATTTGAGAACTATGAGATGAATT
CCTTTGAAATTCGATGTACAAGAAGAACAGGACACCTGTGTGGTCTTTGTGAAAATTGCTCCAATTCCG
AAACGAACAGGATAAAGTGGTTTTATTTCTTTGCACTTTTCAGTGACATAACAGCTTTCAAACAGCCAATT
GAGGATGATTCATGTAAGGCTGGGGGAAGTTGCTCGGCTGACAAGAGCACTGACAAGCAGCAGGGGTG
TCCTGCAGCAGCTGGCTCCAAGCGTGCAAAAAGGCGAGAATGTCCACAAGCACTCCCGCCTGGCAGAGGT
CCTACAGCTGGGCTCAGACATCCTTCCCAGTACAAGCAAGAGGCACCAAGACTCCCCCTCACATCATC
TTACATTATTGTGTTTTAAGACCACGTGGGATTGGATCATCTTGATCTTGACCTTCTATACAGCCATCT
TGGTCCCTATAATGTCTCCTTCAAACCAGGCAGAATAATGTGGCCTGGCTGGTTGTTGATAGCATCGT
GGATGTTATCTTTTTGGTGGACATTGTGCTCAATTTTCATACCACCTTTGTTGGACCAGCAGGGGAGGTG
ATTTCTGACCCCAAACCTATCCGCATGAACACTACCTGAAGACGTGGTTTGTGATTGACCTTCTGCTGTT
TGCCATATGATGTCATCAACGCTTTTGAAGACGTGGATGAGTTAGTGCCTTTATGGGTGATCCAGGGAA
GATTGTTTTGCTGATCAGATTCACCACCACCTGGAGGGGAGAGAGAGTCAAGGCATCAGCAGCCTGTT
AGCTCTCTAAAAGTTGTCCGGCTGCTCCGCTTTGGGCGAGTGGCCGTAAGCTGGACCACTACATTGAAT
ATGGAGCTGCTGTGCTGGTCTGCTGGTGTGTGTTGGGCTGGCTGCACACTGGATGGCTGCATCTG
GTACAGCATTGGGGACTATGAGATCTTTGACGAGGACACCAAGACAATCCGCAACAACAGCTGGCTGTAC
CAACTAGCGATGGACATTGGCACCCTTACCAGTTTAATGGGTCTGGCTCAGGGAAGTGGGAAGGTGGT
CCAGCAAGAATTCTGTCTACATCTCCTCGTTGTATTTACAATGACCAGCCTCACCAGTGTGGGCTTTGG
GAACATCGCCCCATCCACAGACATTGAGAAGATCTTGCAGTGGCCATCATGATGATTGGCTCACTTCTC



[View online »](#)

TATGCCACCATCTTCGGGAATGTGACGACTATTTTCCAACAGATGTATGCCAACCAACAGATACCATG
 AGATGCTCAACAGTGTTCGGGACTTCTGAAGCTACCAGGTGCCAAAAGGATTGAGTGAGCGAGTAAT
 GGATTATATTGTGTCCACTTGGTCCATGTCCAGAGGCATTGACACAGAGAAGGTCTGCAGATCTGCCCC
 AAGGACATGAGAGCCGACATCTGCGTGCACCTGAACCGCAAGGTGTTCAAGGAGCACCCGGCCTCCGGC
 TGGCCAGTGATGGCTGCCTCCGGCACTGGCCATGGAGTCCAGACGGTGCACCTGCCCCAGGGGACCT
 CATCTACCATGCAGGAGAGCGTTGACAGCCTCGCTTGTGGTTTCTGGCTCCCTGGAGGTGATCCAA
 GATGATGAGGTGGTGGCCATTCTAGGAAAAGGAGACGTGTTGGAGATGTGTTCTGGAAGGAAGCCACC
 TTGCCAGTCTGTGCCAATGTTAGGGCCTTGACCTACTGTGATCTGCATGTGATCAAGCGGGATGCCCT
 GCAGAAAAGTGCTGGAATTCTACACGCGCCTTCTCCATTCTTCTCCCGAACCTGATTCTGACGTACAAC
 TTGAGGAAGAGGATTGTGTTCCGGAAGATCAGCGATGTGAAACGTGAAGAGGAAGAACGCATGAAACGAA
 AGAATGAGGCCCCCTGATCTTGCCCCGGACCACCTGTCCGGCGCCTTCCAGAGATTCCGACAGCA
 GAAAGAGGCCAGGCTGGCAGCTGAGAGAGGGGGCCGGGACCTGGATGACCTAGATGTGGAGAAGGGCAAT
 GTCCTTACAGAGCATGCCTCCGCCAACACAGCCTCGTGAAGGCCAGCGTGGTACCCTGCGTGAGAGTC
 CTGCCACGCCGTATCCTTCCAGGCAGCCTCCACCTCCGGGGTCCAGACCACGCAAAGCTACAGGGCC
 AGGGTCCGAGTGCCTGGGCCCAAGGGGGCGGGGCGATTGTGCCAAGCGCAAAAGCTGGGCCCGCTTC
 AAAGATGCTTGCGGGAAGAGTGAGGACTGGAACAAGGTGTCCAAGGCTGAGTCGATGGAGACACTCCCCG
 AGAGGACAAAAGCGTCAGGCGAGGCCACACTGAAGAAGACAGACTCGTGTGACAGTGGCATCACCAAGAG
 CGACTTGCCTGGACAACGTGGGTGAGGCCAGGAGTCCCAGGATCGGAGTCCCATCCTGGCAGAGGTC
 AAGCATTCTGTTTACCCCATCCCTGAGCAGACGCTGCAGGCCACAGTCTGGAGGTGAGGCACGAGCTGA
 AGGAGGACATCAAGGCCTTAAACGCCAAAATGACCAATATTGAGAACAGCTCTCTGAGATACTCAGGAT
 ATTAACCTCCAGAAGATCCTCTCAGTCTCCTCAGGAGTTGTTTGAATATCGAGGCCACAGTCCCAGAA
 TCAGAGAGAGACATTTTGGAGCCAGC

ACGCGTACGCGGCCGCTCGAGCAGAACTCATCTCAGAAGAGGATCTGGCAGCAAATGATATCCTGGATT
 ACAAGGATGACGACGAT AAGTTTAA

Protein Sequence:

>RC218681 representing NM_172362
 Red=Cloning site Green=Tags(s)

MTMAGRRRLVAPQNTFLENIVRRSNDTNFVLGNAQIVDWPIVYSNDGFCKLSGYHRAEVMQKSSTCSFM
 YGELTDKDTIEKVRQTFENYEMNSFEILMYKKNRTPVWFFVKIAPIRNEQDKVVLFLCTFSDITAFKQPI
 EDDSCKGWKFARLTRALTSSRGLVQLLAPSVQKGENVHKHSRLAEVLQLGSDILPQYKQAPKTPPHII
 LHVCVFKTTWDWIILILFYTAIILVPYNVSKTRQNNVAWLVVDSIVDVIFLVDIVLNFHTTFVGPAGEV
 ISDPKLRMNYLKTWFVIDLLSCLPYDVINAFENVDEVS AFMGDPGKIGFADQIPPPLEGRESQGISSLF
 SSLKVVRLRLGRVARKLDHYIEYGA AVL VLLVCVFGLAAHWMACIWYSIGDYEIFDEDTKIRNNSWLY
 QLAMDIGTPYQFNGSGSGKWEKGGPSKNSVYISSLYFTMTSLTSVGFNGIAPSTDIEKIFAVAIMMIGSLL
 YATIFGNVTTIFQQMYANTNRYHEMLNSVRDFLKLQVQPKGLSERVMDYIVSTWSMSRGIDTEKVLQICP
 KDMRADICVHLNRKVFKEHPAFRLASDGCLRALAMEFQTVHCAPGDLIYHAGESVDSL CFVVSGLSLEVIQ
 DDEVVA I LGKGVDFGDFWKEATLAQSCANVRALTYCDLHVIKRDALQKVFYTA FSHSF SRNLILTYN
 LRKRIVFRKISDVKREEEERMKRKNEAPLILPPDHPVRRFLQFRFRQKEARLAAERGGRLDLDL DVEKGN
 VLTEHASANHSLVKASVTVRES PATPVSFQAASTSGVPDHA KLQAPGSECLGPKGGGGDCAKRKSWARF
 KDACGKSEDWNKVS KAESMETLPERTKASGEATLKKTDSCDSGITKSDLRLDNVGEARSPQDRSPILA EV
 KHSFYPIPEQTLQATVLEVRHELKEDIKALNAKMTNIEKQLSEILRILTSRRSSQSPQELFEISR PQSPE
 SERDIFGAS

TRTRPLEQKLI SEEDLAANDILDYKDDDDKV

Restriction Sites:

Sgfl-MluI

Cloning Scheme:

ACCN:

NM_172362

ORF Size:

2967 bp

OTI Disclaimer:

Due to the inherent nature of this plasmid, standard methods to replicate additional amounts of DNA in *E. coli* are highly likely to result in mutations and/or rearrangements. Therefore, OriGene does not guarantee the capability to replicate this plasmid DNA. Additional amounts of DNA can be purchased from OriGene with batch-specific, full-sequence verification at a reduced cost. Please contact our customer care team at custsupport@origene.com or by calling 301.340.3188 option 3 for pricing and delivery.

The molecular sequence of this clone aligns with the gene accession number as a point of reference only. However, individual transcript sequences of the same gene can differ through naturally occurring variations (e.g. polymorphisms), each with its own valid existence. This clone is substantially in agreement with the reference, but a complete review of all prevailing variants is recommended prior to use. [More info](#)

OTI Annotation:

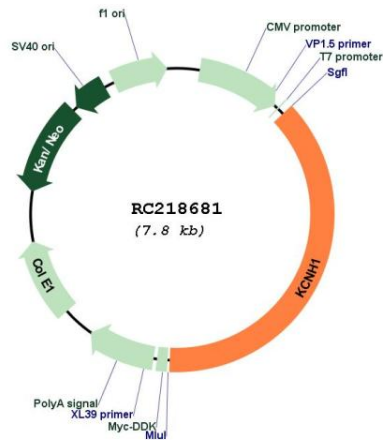
This clone was engineered to express the complete ORF with an expression tag. Expression varies depending on the nature of the gene.

Components:

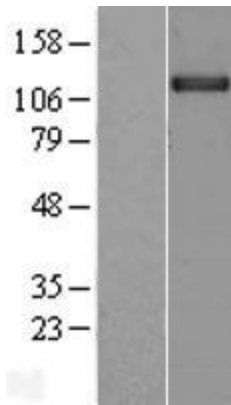
The ORF clone is ion-exchange column purified and shipped in a 2D barcoded Matrix tube containing 10ug of transfection-ready, dried plasmid DNA (reconstitute with 100 ul of water).

Reconstitution Method:	<ol style="list-style-type: none">1. Centrifuge at 5,000xg for 5min.2. Carefully open the tube and add 100ul of sterile water to dissolve the DNA.3. Close the tube and incubate for 10 minutes at room temperature.4. Briefly vortex the tube and then do a quick spin (less than 5000xg) to concentrate the liquid at the bottom.5. Store the suspended plasmid at -20°C. The DNA is stable for at least one year from date of shipping when stored at -20°C.
RefSeq:	NM_172362.3
RefSeq Size:	3208 bp
RefSeq ORF:	2970 bp
Locus ID:	3756
UniProt ID:	O95259
Cytogenetics:	1q32.2
Protein Families:	Druggable Genome, Ion Channels: Potassium, Transmembrane
MW:	111.2 kDa
Gene Summary:	Voltage-gated potassium (Kv) channels represent the most complex class of voltage-gated ion channels from both functional and structural standpoints. Their diverse functions include regulating neurotransmitter release, heart rate, insulin secretion, neuronal excitability, epithelial electrolyte transport, smooth muscle contraction, and cell volume. This gene encodes a member of the potassium channel, voltage-gated, subfamily H. This member is a pore-forming (alpha) subunit of a voltage-gated non-inactivating delayed rectifier potassium channel. It is activated at the onset of myoblast differentiation. The gene is highly expressed in brain and in myoblasts. Overexpression of the gene may confer a growth advantage to cancer cells and favor tumor cell proliferation. Alternative splicing of this gene results in two transcript variants encoding distinct isoforms. [provided by RefSeq, Jul 2008]

Product images:



Circular map for RC218681



Western blot validation of overexpression lysate (Cat# [LY406729]) using anti-DDK antibody (Cat# [TA50011-100]). Left: Cell lysates from untransfected HEK293T cells; Right: Cell lysates from HEK293T cells transfected with RC218681 using transfection reagent MegaTran 2.0 (Cat# [TT210002]).