

Product datasheet for **RC218677**

ZC3H12B (NM_001010888) Human Tagged ORF Clone

Product data:

Product Type:	Expression Plasmids
Product Name:	ZC3H12B (NM_001010888) Human Tagged ORF Clone
Tag:	Myc-DDK
Symbol:	ZC3H12B
Synonyms:	CXorf32; MCPIP2
Mammalian Cell Selection:	Neomycin
Vector:	pCMV6-Entry (PS100001)
E. coli Selection:	Kanamycin (25 ug/mL)



[View online »](#)

ORF Nucleotide
Sequence:

>RC218677 representing NM_001010888
Red=Cloning site Blue=ORF Green=Tags(s)

TTTTGTAATACGACTCACTATAGGGCGGCCGGAATTCGTCGACTGGATCCGGTACCGAGGAGATCTGCC
GCC**CGCATCGCC**

ATGACGGCCACAGCTGAGGTAGAGACACAAAAATGGAGAAGAGTGCCTCCAAGGAAGAGAAGCAGCAGC
CTAAGCAGGACAGCACAGAGCAGGGCAATGCTGATTCTGAAGAGTGGATGAGCTCTGAGAGTGACCTGA
ACAGATAAGCCTTAAGAGTAGCGACAACAGCAAGAGCTGCCAACCTAGGGATGGTCAGTTGAAGAAAAAG
GAGATGCACTCCAAGCCACACCGCCAGCTCTGTGATCACCTGCCTAGATCGTCCAAGTTTCTCCAGA
GCAGCATTTTACAGGATGGTAACTTGACTTGGAGAAGGAATACCAAGCTAAGATGGAGTTTGCCTAAA
GCTGGGCTATGCAGAGGAACAGATTCAATCAGTGTAAACAAGCTGGGCCAGAATCACTTATTAATGAT
GTATTGGCAGAGCTTGTGAGACTTGGGAACAAAGGTGATTCAGAAGGGCAGATCAACTTGAGTCTGTTAG
TGCCCTCGTGGGCCAGCTCCAGAGAGATTGCAAGCCCTGAATTGTCTCTTGAAGATGAAATAGATAACAG
TGACAATTTGAGGCCAGTTGTCATTGATGGAAGTAAATGTGCAATGAGCCATGGGAATAAAGAAGAATTC
TCTGCAGAGGAATAACAATTGCTGTGGATTGGTTCTAGATAAAGGCCATAAAGATATTACTGTATTTG
TGCCCTGCATGGAGAAAGGAGCAATCCCGCCCTGATGCACCAATTACAGATCAAGATATTCTACGAAAAC
GGAGAAGGAAAAGATTCTTGCTTACACCATCCCGAAGAGTCCAAGGCAGGAGGTTGTCTGCTATGAT
GACCGGTTTCATAGTCAAACCTGGCTTTTATTCTGATGGCATATTGTGTCCAATGATAACTACCGAGACC
TTCAAGTTGAAAAGCCAGAATGGAAGAAGTTTATAGAGGAGCGGTTGTGATGTATTCTTTTGTGAATGA
CAAATTTATGCCTCCAGATGATCCATTAGGACGCCACGGCCCAAGCCTTGAAAATTTCTTAAGAAAGAGA
CCCATTGTTCTGAGCATAAGAAGCAACCATGTCCTTATGGCAAAAAATGCACCTACGGCCACAAGTGCA
AATACTACCATCCGGAGCGGGCAACCAACCCAGCCTTCCGTTGGTGGCTGATGAGCTCCGACAGTGCCAA
ACTGTCCACAGTGAACACTATGAGTGAAGGCACCTGGCCAAGTGTGGCACAGGGATGTCTAGTGCCAAA
GGTGAGATAACCTCAGAGGTCAAACGTGTGGCCCAAGCGCAATCAGATCCCAGCATCCGGTCTGTGG
CTATGGAGCCTGAGGAATGGCTGTCCATTGCCGTAAGCCTGAGGCTAGTTCTGTCCCCTCGCTTGTGAC
TGCCCTAAGTGTTCACCAATCCACCCCCAAAAGCCATGCAGTGGTGCCTCAACACCCGTTCCGGCC
AGCAGCCAGTGCCAGGATCCTCCATTTCCCCACCAGAAGGCCTTTTGGAGCATATGGCCAGCATGC
AGTATCCTCCATCTTGGTTACCAACAGCCATGGGACCCCTATTAGCTATGCTGAGCAATACCCAAAGTT
TGAATCCATGGGGACCATGGCTACTATCAATGTTAGGTGACTTCTCAAACCTGAACATCAACAGCATG
CATAACCGAGAGTATTACATGGCTGAAGTAGACCGGGGGTGTATGCCCGGAATCCTAACCTCTGTTCTG
ACAGCCGTGTGAGCCATACCAGGAATGACAACCTTCTCTTACAACAAGTGTATTTGGCTGTAGCTGA
TACCCATCCTGAAGGCAATTTGAAGCTGCACCGCTCAGCATCCCAGAACCAGACTTCAGCCTTTTCTCAT
GGTTACCATGAAGCCTTAACACGAGTGCAGAGCTATGGCCAGAGGATTCTAAGCAAGGCCCCCAACAAAC
AGTCAGTCCCCACTTAGCTCTGCATGCCAGCACCCATCAACTGGAACACGTTCCAGCTGTCTGCAGA
CTACCCCATGCCTCCCAATATCCATCCTGGGGCAACCCCCAGCCAGGCCGTGCCTGGTGTGACTCGG
ATGGATAGCATTCCGACTCCCGCTCTATGAGAGCAACCCCGTGAAGCAAGACGACCTCCCCTGTGCC
GGGAACAGCATGCCAGCTGGGACCCGCTGCCCTGTACAACCTGACTCCTATGGCTACCACTCCTATCCCT
GAGTAACAGCCTCATGCAACCATGTTATGAGCCAGTCAATGGTACGGAGCGTGCCTGAAAAGATGGAGCAG
CTTTGGAGGAATCCTTGGGTTGGAATGTCAATGATTCCAGGGAGCATATGATCCCAGAACACAGTATC
AGACCTACAAGAACCTCTGCAATATTTCCCTTCTAACATCGTCTTGCAGTGTGGAGAAGAATCCCCA
CACAGCAGATGCCAGCAACTGGCAGCCTTGATTGTTGCTAAGCTTAGGGCTGCACGT

ACGCGTACGCGGCCGCTCGAGCAGAACTCATCTCAGAAGAGGATCTGGCAGCAATGATATCCTGGATT
ACAAGGATGACGACGATAAGGTTTAA

Protein Sequence: >RC218677 representing NM_001010888
Red=Cloning site Green=Tags(s)

MTATAEVETPKMEKSASKEEKQQPKQDSTEQGNADSEEWMSSESDEPEQISLKSSDNSKSCQPRDQQLKKK
EMHSKPHRQLCRSPCLDRPSFSQSSILQDGKLDLEKEYQAKMEFALKLGYAEEQIQSVLNKLGPESLIND
VLAELVRLGNKGDSEGQINLSLLVPRGSSREIASPELSLEDEIDNSDNLRPVVIDGNSVAMSHGNKEEF
SCRGIQLAVDWFLDKGHKDITVFPAWRKEQSRPDAPITDQDILRKLEKEKILVFTPSRRVQGRRVVCYD
DRFIVKLAFDSDGIIVSNDNYRDLQVEKPEWKKFIEERLLMYSFVNDKFMPPDDLGRHGPSLENFLRKR
PIVPEHKKQPCPYGKKCTYGHKCKYYHPERANQPQRSVADELRI SAKLSTVKT MSEGTLAKCGTGMSSAK
GEITSEVKRVAPKRQSDPSIRSVAMEPEEWSIARKPEASSVPSLVTALSVPTIPPPKSHAVGALNTRSA
SSPVPGSSHFPHQKASLEHMASMQYPPILVTNSHGTPISYAEQYPKFESMGDHGYYSMLGDFSKLNINSM
HNREYYMAEVD RGVYARNPNLCSDSRVSHTRNDNYSSYNNVYLAVADTHPEGNLKLHRSASQNLQPFPH
GYHEALTRVQSYGPEDSKQGPHKQSVPHLALHAQHPSTGTRSSCPADYPMPPNIHPGATPQPGRALVMTR
MDSISDSRLYESNPVRQRRPPLCREQHASWDPLPCTTDSYGYHSYPLSNLSMQPCYEPVMVRSVPEKMEQ
LWRNPWVGMCNDSREHMIPEHQYQTYKNLCNIFPSNIVLAVMEKNPHTADAQQLAALIVAKLRAAR

TRTRPLEQKLI SEEDLAANDILDYKDDDDKV

Chromatograms: https://cdn.origene.com/chromatograms/mk8020_h01.zip

Restriction Sites: Sgfl-Mlul

Cloning Scheme:


ACCN: NM_001010888

ORF Size: 2508 bp

OTI Disclaimer: The molecular sequence of this clone aligns with the gene accession number as a point of reference only. However, individual transcript sequences of the same gene can differ through naturally occurring variations (e.g. polymorphisms), each with its own valid existence. This clone is substantially in agreement with the reference, but a complete review of all prevailing variants is recommended prior to use. [More info](#)

OTI Annotation: This clone was engineered to express the complete ORF with an expression tag. Expression varies depending on the nature of the gene.

Components: The ORF clone is ion-exchange column purified and shipped in a 2D barcoded Matrix tube containing 10ug of transfection-ready, dried plasmid DNA (reconstitute with 100 ul of water).

Reconstitution Method:

1. Centrifuge at 5,000xg for 5min.
2. Carefully open the tube and add 100ul of sterile water to dissolve the DNA.
3. Close the tube and incubate for 10 minutes at room temperature.
4. Briefly vortex the tube and then do a quick spin (less than 5000xg) to concentrate the liquid at the bottom.
5. Store the suspended plasmid at -20°C. The DNA is stable for at least one year from date of shipping when stored at -20°C.

RefSeq: [NM_001010888.3](#), [NP_001010888.3](#)

RefSeq Size: 7183 bp

RefSeq ORF: 2511 bp

Locus ID: 340554

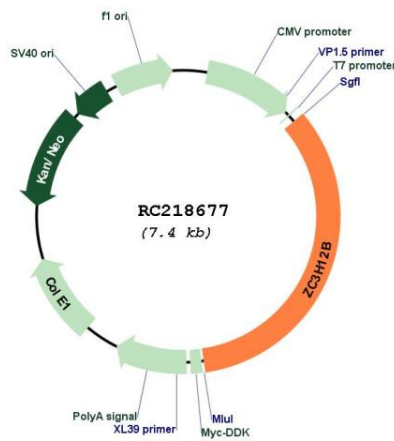
UniProt ID: [Q5HYM0](#)

Cytogenetics: Xq11.2-q12

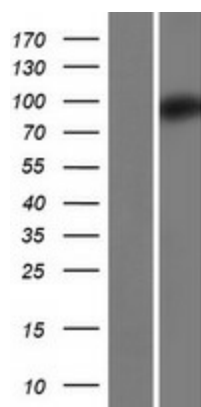
MW: 94.21 kDa

Gene Summary: The protein encoded by this gene belongs to a family of CCCH-type zinc finger proteins that are involved in the proinflammatory activation of macrophages. The exact function of this family member is unknown, but it is thought to function as a ribonuclease. [provided by RefSeq, May 2010]

Product images:



Circular map for RC218677



Western blot validation of overexpression lysate (Cat# [LY423209]) using anti-DDK antibody (Cat# [TA50011-100]). Left: Cell lysates from untransfected HEK293T cells; Right: Cell lysates from HEK293T cells transfected with RC218677 using transfection reagent MegaTran 2.0 (Cat# [TT210002]).