

## Product datasheet for **RC218674**

### **GPR111 (ADGRF2) (NM\_153839) Human Tagged ORF Clone**

#### **Product data:**

Product Type:	Expression Plasmids
Product Name:	GPR111 (ADGRF2) (NM_153839) Human Tagged ORF Clone
Tag:	Myc-DDK
Symbol:	GPR111
Synonyms:	GPR111; hGPCR35; PGR20
Mammalian Cell Selection:	Neomycin
Vector:	pCMV6-Entry (PS100001)
E. coli Selection:	Kanamycin (25 ug/mL)



[View online »](#)

ORF Nucleotide  
Sequence:

>RC218674 representing NM\_153839  
Red=Cloning site Blue=ORF Green=Tags(s)

TTTTGTAATACGACTCACTATAGGGCGGCCGGGAATTCGTCGACTGGATCCGGTACCGAGGAGATCTGCC  
GCC**CGGATCGCC**

ATGACTCATATACTTTTGTCTACTACTTGGTGTTCCTTTGCCACAGAGTCCTGTAGGACATTGTATC  
AGGCTGCAAGCAAAGCAAGGAGAAGGTGCCTGCCAGGCCACACGGTGTATGCGATGGTGTCTGTACAGA  
CTACTCCCAGTGTACTCAACCTTGCCCTCCAGACTCAGGGAAATATGGGGTTTCATGCAGGCAAAG  
ACATGGCACAAGATCACTGACACCTGCCAGACTCTTAATGCCCTCAACATCTTTGAGGAGGATTCACGTT  
TGGTTCAGCCATTTGAAGACAATATAAAAATAAGTGTATATACTGGAAAGTCTGAGACCATAACAGATAT  
GTTGCTACAAAAGTGTCCACAGATCTGTCTTGTGTAATTAGAAACATTCAGCAGTCTCCCTGGATACCA  
GGAAACATTGCCGTAATTGTGCAGCTTTACACAACATATCAACAGCAATATGGACAGGTGTTGATGAGG  
CAAAGATGCAGAGTTACAGCACCATAGCCAACCACATTCTAACAGCAAAGCATCTCCAAGTGGACTTT  
CATTCTGACAGAAACAGCAGCTATATCCTGCTACATTCAGTCAACTCCTTTGCAAGAAGGCTATTCATA  
GATAAACATCCTGTTGACATATCAGATGTCTTCATTCATACTATGGGCACCACCATATCTGGAGATAACA  
TTGGAAAAAATTTCACTTTTTCTATGAGAATTAATGATACCAGCAATGAAGTCACTGGGAGAGTGTGAT  
CAGCAGAGATGAACTTCGGAAGGTGCCTTCCCCTTCTCAGGTCATCAGCATTGCATTTCCAAGTATTGGG  
GCTATTTTGGAAAGCCAGTCTTTTGGAAAATGTTACTGTAATGGGCTTGTCTGTCTGCCATTTGCCCA  
AGGAACTTAAAGAATCTCACTGATTTTTGAAAAGATCAGCAAGTCAAGGAGAGGAGGACACAGTGTGT  
TGGCTGGCACTCTGTGGAGAACAGATGGGACCAGCAGGCTGCAAAATGATTCAAGAAAAGTCCCAGCAA  
GCTGTTTGAAAATGTAGGCCAAGCAAATGTTTACCTCTTCTCAATTCCTATGTCACCTCACATCTTAG  
AGAGTCTGATTCTGACTTACATCACATATGTAGGCCTGGCATTCTATTTGCAGCCTGATCCTTTGCTT  
GTCCATTGAGGTCTAGTCTGGAGCCAAGTGACAAAGACAGAGTACCTATTTACGCCATGTGTGCATT  
GTTAACATTGCAGCCACTTTGCTGATGGCAGATGTGTGGTTCATTGTGGCTTCCCTTCTAGTGGCCCAA  
TAACACACCACAAGGGATGTGTGGCAGCCACATTTTTTGTTCATTTCTTTTACCTTTCTGTATTTTTCTG  
GATGCTTGCCAAGGCACTCCTTATCCTCTATGGAATCATGATTGTTTTCCATACCTTGCCCAAGTCAGTC  
CTGGTGGCATCTCTGTTTTAGTGGGCTATGGATGCCCTTTGGCCATTGCTGCCATCACTGTTGCTGCCA  
CTGAACCTGGCAAAGGCTATCTACGACCTGAGATCTGCTGGCTCAACTGGGACATGACCAAAGCCCTCT  
GGCCTTCGTGATCCCAGCTTTGGCCATCGTGGTAGTAAACCTGATCACAGTCACACTGGTATTGTCAAG  
ACCCAGCGAGCTGCCATTGGCAATTCATGTTCCAGGAAGTGAAGCCATTGTGAGAATCAGCAAGAACA  
TCGCCATCCTCACACCCTTCTGGGACTGACCTGGGGATTTGGAGTAGCCACTGTCATCGATGACAGATC  
CCTGGCCTTCCACATTATCTTCTCCCTGCTCAATGCATTCCAGGGTTTCTTCATCTAGTGTGTTGGAACC  
ATCCTGGATCAAAGATAAGAGAAGCCTTAAAGGGT

**ACGCGT**ACGCGGCCGCTCGAGCAGAAACTCATCTCAGAAGAGGATCTGGCAGCAAATGATATCCTGGATT  
ACAAGGATGACGACGATAAGGTTTAA

**Protein Sequence:** >RC218674 representing NM\_153839  
Red=Cloning site Green=Tags(s)

MTHILLLYLVFLPTESCRTLQQAASKSKEKVPARPHGVCDGVCTDYSQCTQPCPPDTQGNMGFSCRQK  
 TWHKITDTCQTLNALNIFEEDSRLVQPFEDNIKISVYTGKSETITDMLLQKCPTDLSCVIRNIQQSPWIP  
 GNIATIVQLLHNI STAIWTVGDEAKMQSYSTIANHILNSKISINWTFIPDRNSSYILLHSVNSFARRLFI  
 DKHPVDISDVF IHTMGTTISGDNI GKNFTFSMRINDTSNEVTGRVLI SRDEL RKVSPSPQVISIAFPTIG  
 AILEASLLENVTVNGLVLSAILPKELKRISLIFEKISKSEERRTQCVGWHSVENRWDQQACKMIQENSQQ  
 AVCKCRPSKLF TFSILMSPHILES LILTYITYVGLGISICSLILCLSIEVLVWSQVTKTEITYLRHVC I  
 VNIAATLLMADVWFIVASFLSGPITHHKGVAATFFVHFFYL SVFFWMLAKALLILY GIMIVFHTLPKSV  
 LVASLFSVGYGCP LAIAAITVAATEPGKGYLRPEICWLNWDMTKALLAFVIPALAI VVVNLITVTLVIVK  
 TQRAAIGNSMFQEVRAIVRISKNI AIL TPLLGLTWGFGVATVIDDRSLAFHIIFSL LNAFQGGFFILVFGT  
 ILDPKIREALKG

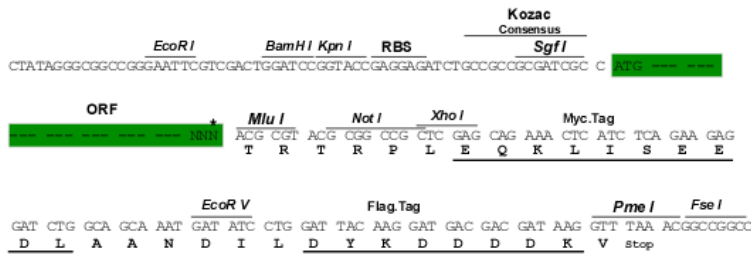
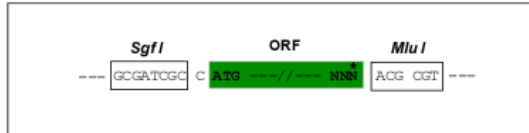
TRTRPLEQKLISEEDLAANDILDYKDDDDKV

**Chromatograms:** [https://cdn.origene.com/chromatograms/mk8115\\_h09.zip](https://cdn.origene.com/chromatograms/mk8115_h09.zip)

**Restriction Sites:** SgfI-MluI

**Cloning Scheme:**

Cloning sites used for ORF Shuttling:



\* The last codon before the Stop codon of the ORF

**ACCN:** NM\_153839

**ORF Size:** 1926 bp

**OTI Disclaimer:** Due to the inherent nature of this plasmid, standard methods to replicate additional amounts of DNA in E. coli are highly likely to result in mutations and/or rearrangements. Therefore, OriGene does not guarantee the capability to replicate this plasmid DNA. Additional amounts of DNA can be purchased from OriGene with batch-specific, full-sequence verification at a reduced cost. Please contact our customer care team at [custsupport@origene.com](mailto:custsupport@origene.com) or by calling 301.340.3188 option 3 for pricing and delivery.

The molecular sequence of this clone aligns with the gene accession number as a point of reference only. However, individual transcript sequences of the same gene can differ through naturally occurring variations (e.g. polymorphisms), each with its own valid existence. This clone is substantially in agreement with the reference, but a complete review of all prevailing variants is recommended prior to use. [More info](#)

**OTI Annotation:** This clone was engineered to express the complete ORF with an expression tag. Expression varies depending on the nature of the gene.

**Components:** The ORF clone is ion-exchange column purified and shipped in a 2D barcoded Matrix tube containing 10ug of transfection-ready, dried plasmid DNA (reconstitute with 100 ul of water).

**Reconstitution Method:**

1. Centrifuge at 5,000xg for 5min.
2. Carefully open the tube and add 100ul of sterile water to dissolve the DNA.
3. Close the tube and incubate for 10 minutes at room temperature.
4. Briefly vortex the tube and then do a quick spin (less than 5000xg) to concentrate the liquid at the bottom.
5. Store the suspended plasmid at -20°C. The DNA is stable for at least one year from date of shipping when stored at -20°C.

**RefSeq:** [NM\\_153839.7](#)

**RefSeq Size:** 5135 bp

**RefSeq ORF:** 1929 bp

**Locus ID:** 222611

**UniProt ID:** [Q8IZF7](#)

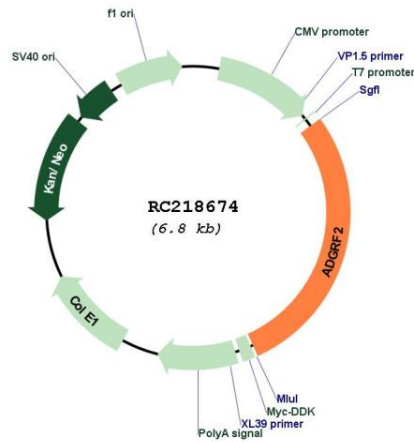
**Cytogenetics:** 6p12.3

**Protein Families:** Druggable Genome, Transmembrane

**MW:** 71.6 kDa

**Gene Summary:** Orphan receptor.[UniProtKB/Swiss-Prot Function]

Product images:



Circular map for RC218674