

Product datasheet for RC218672

TMEM91 (NM_001098821) Human Tagged ORF Clone

Product data:

Product Type: Expression Plasmids
Product Name: TMEM91 (NM_001098821) Human Tagged ORF Clone
Tag: Myc-DDK
Symbol: TMEM91
Synonyms: DSPC3; IFITMD6
Mammalian Cell Selection: Neomycin
Vector: pCMV6-Entry (PS100001)
E. coli Selection: Kanamycin (25 ug/mL)
ORF Nucleotide Sequence: >RC218672 representing NM_001098821
Red=Cloning site Blue=ORF Green=Tags(s)

TTTGTAAATACGACTCACTATAGGGCGCCGGGAATTCGTCGACTGGATCCGGTACCGAGGAGATCTGCC
GCC**CGATCGCC**

ATGGACAGCCCTAGTCTTCGTGAGCTTCAACAGCCTCTGCTGGAGGGCACAGAATGTGAGACCCCTGCC
AGAAGCCTGGCAGGCATGAGCTGGGGTCCCCCTTAAGAGAGATAGCCTTTGCCGAGTCCCTGAGGGGTTT
GCAGTTCTGTCAACGCCTTCCCTCCGTGAGCGCTGGCCTGGGGGAACCAAGGCCCTGATGTTGAG
GACATGTCATCCAGTGACAGTGACTCGGACTGGGATGGAGGCAGCCGCTTTACCATTCTACCCACG
ACCACCTCGGCTTGGCTGTCTTCCATGCTGTGTTGTTTCTGGCCGTTGGCATCGCTGCCTTCTGTCT
AGCCCAGAAGACCAACAAGGCTTGGGCCAAGGGGACATCCAGGGGGCAGGGGCCCTCCGCGCTGCC
TTCTGCTGGGGTCTCGCCGTGGGGTGGCGTGTGCACGATGCGGGTGCCTGGTGACCCTGGCTG
CCTACCTGCCTCCCGAGACCCGCC

ACGCGTACGCGGCCGCTCGAGCAGAACTCATCTCAGAAGAGGATCTGGCAGCAATGATATCCTGGATT
ACAAGGATGACGACGATAAGGTTTAA

Protein Sequence: >RC218672 representing NM_001098821
Red=Cloning site Green=Tags(s)

MDSPSLRELQQPLLEGTECETPAQKPRHELGSPLREIAFAESLRGLQFLSPPLPSVSAGLGEPRPPDVE
DMSSSDSDSDWDGGSRLSPFLPHDHLGLAVFSMLCCFWPVGIAAFCLAQKTNKAWAKGDIQGAGAASRRA
FLLGVLAVGLGVCTYAAALVTLAAYLASRDPP

TRTRPLEQKLISEEDLAANDILDYKDDDDKV

Chromatograms: https://cdn.origene.com/chromatograms/mk8005_g12.zip



[View online »](#)

Restriction Sites: SgfI-MluI

Cloning Scheme:



ACCN: NM_001098821

ORF Size: 516 bp

OTI Disclaimer: The molecular sequence of this clone aligns with the gene accession number as a point of reference only. However, individual transcript sequences of the same gene can differ through naturally occurring variations (e.g. polymorphisms), each with its own valid existence. This clone is substantially in agreement with the reference, but a complete review of all prevailing variants is recommended prior to use. [More info](#)

OTI Annotation: This clone was engineered to express the complete ORF with an expression tag. Expression varies depending on the nature of the gene.

Components: The ORF clone is ion-exchange column purified and shipped in a 2D barcoded Matrix tube containing 10ug of transfection-ready, dried plasmid DNA (reconstitute with 100 ul of water).

Reconstitution Method:

1. Centrifuge at 5,000xg for 5min.
2. Carefully open the tube and add 100ul of sterile water to dissolve the DNA.
3. Close the tube and incubate for 10 minutes at room temperature.
4. Briefly vortex the tube and then do a quick spin (less than 5000xg) to concentrate the liquid at the bottom.
5. Store the suspended plasmid at -20°C. The DNA is stable for at least one year from date of shipping when stored at -20°C.

RefSeq: [NM_001098821.2](#)

RefSeq Size: 1091 bp

RefSeq ORF: 519 bp

Locus ID: 641649

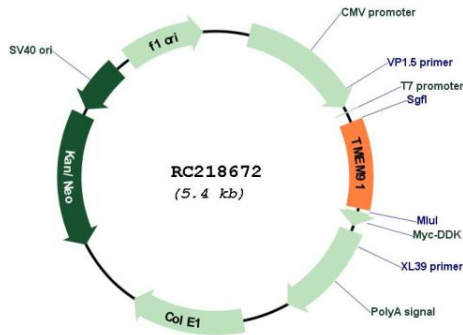
UniProt ID: [Q6ZNR0](#)

Cytogenetics: 19q13.2

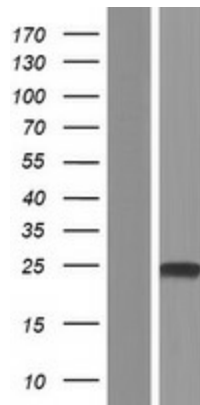
Protein Families: Transmembrane

MW: 18 kDa

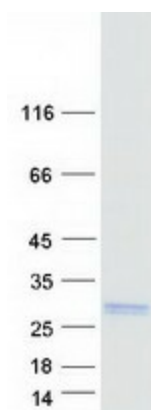
Product images:



Circular map for RC218672



Western blot validation of overexpression lysate (Cat# [LY420352]) using anti-DDK antibody (Cat# [TA50011-100]). Left: Cell lysates from untransfected HEK293T cells; Right: Cell lysates from HEK293T cells transfected with RC218672 using transfection reagent MegaTran 2.0 (Cat# [TT210002]).



Coomassie blue staining of purified TMEM91 protein (Cat# [TP318672]). The protein was produced from HEK293T cells transfected with TMEM91 cDNA clone (Cat# RC218672) using MegaTran 2.0 (Cat# [TT210002]).