

Product datasheet for **RC218656**

GPRC6A (NM_148963) Human Tagged ORF Clone

Product data:

Product Type:	Expression Plasmids
Product Name:	GPRC6A (NM_148963) Human Tagged ORF Clone
Tag:	Myc-DDK
Symbol:	GPRC6A
Synonyms:	bA86F4.3; GPCR
Mammalian Cell Selection:	Neomycin
Vector:	pCMV6-Entry (PS100001)
E. coli Selection:	Kanamycin (25 ug/mL)



[View online »](#)

ORF Nucleotide Sequence:

>RC218656 representing NM_148963
 Red=Cloning site Blue=ORF Green=Tags(s)

TTTTGTAATACGACTCACTATAGGGCGGCCGGAATTCGTCGACTGGATCCGGTACCGAGGAGATCTGCC
 GCC**CGCATCGCC**

ATGGCATTCTTAATTATACTAATTACCTGCTTTGTGATTATTCTTGCTACTTACAGCCTTGCCAGACCC
 CTGATGACTTTGTGGCTGCCACTTCTCCGGACATATCATAATTGGAGGTTTGTGGTCTATTCATGAAAA
 AATGTTGTCTCAGAAGACTCTCCAGACGACCACAAATCCAGGAGTGTGTTGGCTTTGAAATATCAGTT
 TTTCTTCAAACCTTTGCCATGATACACAGCATTGAGATGATCAACAATCAACACTCTTATCTGGAGTCA
 AACTGGGGTATGAAATCTATGACACTTGTACAGAAGTACAGTGGCAATGGCAGCCACTCTGAGGTTTCT
 TTCTAAATCAACTGCTCCAGAGAACTGTGGAGTTAAGTGTGACTATTCCAGCTACATGCCAAGAGTT
 AAGGCTGCATAGGTTCTGGTACTCAGAAATAACTATGGCTGTCTCCAGGATGTTGAATTTACAGCTCA
 TGCCACAGGTGGGTTATGAATCAACTGCAGAAATCCTGAGTGACAAAATTCGCTTTCCTTCAATTTTACG
 GACTGTGCCAGTGACTTCCATCAAATTAAGCAATGGCTCACCTGATTACAGAAATCTGGTTGGAAGTGG
 ATTGGCATAATAACCACAGATGATGACTATGGACGATTGGCTCTTAACACTTTTATAAATCAGGCTGAAG
 CAAATAACGTGTGCATAGCCTTCAAAGAGGTTCTTCCAGCCTTCTTTCAGATAATACCATTGAAGTCAG
 AATCAATCGGACACTGAAGAAAATCATTTTAGAAGCCAGGTTAATGTCATTGTGGTATTCTGAGGCAA
 TTCCATGTTTTGATCTCTTCAATAAAGCCATTGAAATGAATAAATAAGATGTGGATTGCTAGTGATA
 ATGGTCAACTGCCACCAAGATTACCACCATTCTAATGTTAAAAAGATTGGCAAAGTTGTAGGGTTTGC
 CTTTAGAAGAGGGAATATACCTCTTCCATTCTTTCTTCAAAATCTGCACTTGCTTCCAGTGACAGT
 CACAAACTCTTACATGAATATGCCATGCATTTATCTGCCTGCGCATATGCAAGGACACTGATTTGAGTC
 AATGCATATTCATCTCTCAAAGGACTTTGGCCTACAAGGCTAACAAGGCTATAGAAAGGAATTCGT
 CATGAGAAATGACTTCTCTGGGACTATGCTGAGCCAGGACTCATTATAGTATTACAGCTTGCAGTGTTT
 GCCCTTGTTATGCCATTCGGGATCTGTGTCAAGCTCGTACTGTGAGTGTGAGACCCCAACGCCTTTCAACCAT
 GGGAGTACTTGGTGTGCTAAAAATGTGACATTCACTGATGGATGGAATTCATTTCAATTTGATGCTCA
 TGGGGATTTAAATACTGGATATGATGTTGTGCTCTGGAAGGAGATCAATGGACACATGACTGTCATAAG
 ATGGCAGAATATGACCTACAGAATGATGTCTTATCATCCAGATCAGGAAACAAAAATGAGTTCAGGA
 ATCTTAAGCAAATCAATCTAAATGCTCCAAGGAATGCAGTCTGGGCAAATGAAGAAAATACAAGAAG
 TCAACACATCTGTTGCTATGAATGTCAGAACTGCCTGAAAATCATTACACTAATCAGACAGATATGCCT
 CATTGCCTTTTATGCAACAACAAAATCACTGGGCCCTGTTAGGAGCACTATGTCTTTGAAAAGGAAG
 TGGAAATCTCAACTGGAATGACTCCTTGCCATCCTACTCCTGATTCTCTCCCTACTGGGAATCATATT
 TGTCTGGTTGTTGGCATAATATTTACAAGAACTGAACACTCCTGTTGTGAAATCATCCGGGGGATTA
 AGAGTCTGCTATGTGATCCTTCTCTGCTATTTCTCAATTTTGGCAGCAGAGCTTTTTCATTGGAGAAC
 CACAAGACTTCACATGTAACCAGGCAGACAATGTTGGAGTGAGCTTTACTCTTTGCATCTCCTGCAT
 TTTGACGAAGTCTCTGAAAATTTTGTAGCTTTTCTGAGCTTTGATCCCAAATACAGAAAATTTCTGAAGTGC
 CTCTATAGACCGATCCTTATTATCTTCACTTGCACGGGCATCCAGGTTGTCATTTGCACACTCTGGCTAA
 TCTTTGCAGCACCTACTGTAGAGGTGAATGTCTCTTGGCCAGAGTCATCATCTGGAGTGTGAGGAGGG
 ATCCATACTTGCATTTGGCACCATGCTGGGCTACATTGCCATCCTGGCCTTCATTTGCTCATATTTGCT
 TTCAAAGGCAAATATGAGAATTACAATGAAGCCAAATTCATTACATTTGGCATGCTCATTTACTTCATAG
 CTTGGATCACATTCATCCCTATCTATGCTACCACATTTGGCAAATATGTACCGGCTGTGGAGATTATTGT
 CATATTAATATCTAACTATGGAATCCTGTATTGCACATTCATCCCAAATGCTATGTTATTATTTGTAAG
 CAAGAGATTAACACAAAGTCTGCCTTTCTCAAGATGATCTACAGTATTCTTCCCATAGTGTGAGCAGCA
 TTGCCCTGAGTCTGCTTCACTGGACTCCATGAGCGGCAATGTCACAATGACCAATCCCAGCTCTAGTGG
 CAAGTCTGCAACCTGGCAGAAAAGCAAAGATCTTCAGGCACAAGCATTGTCACACATATGCAGGGAAAAT
 GCCACAAGTGTATCTAAAATTTGCCTCGAAAAAGAATGTCAAGTATA

ACGCGTACGCGGCCGCTCGAGCAGAACTCATCTCAGAAGAGGATCTGGCAGCAAATGATATCCTGGATT
 ACAAGGATGACGACGATAAGGTTTAA

Protein Sequence: >RC218656 representing NM_148963
Red=Cloning site Green=Tags(s)

MAFLIILITCFVILATSQPCQTPDDFVAATSPGHIIIGGLFAIHEKMLSSDSPRRPQIQECVGF EISV
 FLQTLAMIHSIEMINNSTLLSGVKLGYEYDTC TEVTVAMAATLRFLSKFNCSRETVEFKCDYSSYMPRV
 KAVIGSGYSEITMAVSRMLNLQLMPQVGYESTAEILSDKIRFPSFLRTVP SDFHQIKAMAHLIQKSGWNW
 IGIITDDDDYGR LALNTFIIQAEANNVCI AFKEVLP AFLSDNTIEVRINRTLKKIILEAQVNVIVVFLRQ
 FHVFDL FNKAIEMNINKMWIASDNWSTATKITTIPNVKKIGKVVGFAFR RGNISSFHSFLQNLHLLPSDS
 HKLLHEYAMHLSACAYVKD TDLSQCIFNHSQRTLAYKANKAIERNFVMRNDFLWDY AEPGLIHSIQLAVF
 ALGYAIRDL CQARDCQNPNAFQPWELLGVLKNVTFD GWNSFHFD AHGDLNTGYDVVLWKEINGHMTVTK
 MAEYDLQNDVFIIPDQETKNEFRNLKQIQSKSKECSPGQMKKTTRSQHICCYECQNCPENHYTNQTDMP
 HCLLCNNKTHWAPVRSTMC FEKEVEYLNWNSLA ILLLILSLLGIIFVLVVG IIFTRNLNTPVVKSSGGL
 RVCYVILLCHFLNFASTSFFIGEPQDFTCKTRQTMFGVSFTLCISCILTKSLKILLAFSFDPKLQKFLKC
 LYRPILIIFTCTGIQVICTLWLIFAAPTVEVNVSLPRV IILECEECSILAFGTM LGYIAILAFICFIFA
 FKGYENYNEAKFITFGMLIYFIAWITFIPIYATTFGKYVPAVEIIVILISNYGILYCTFIPKCYVIICK
 QEINTKSAFLKMIYSYSSHSVSSIALSPASLDSMSGNVMTNPSSSGKSATWQKSKDLQAQAF AHICREN
 ATSVSKTLPRKRMSI

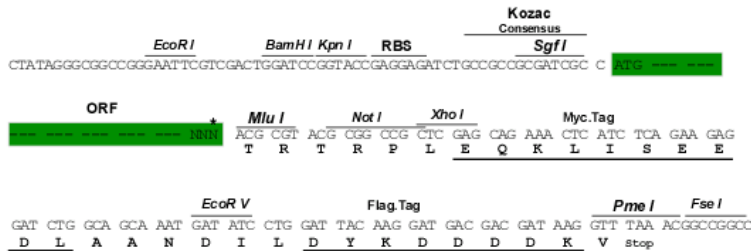
TRTRPLEQKLISEEDLAANDILDYKDDDDKV

Chromatograms: https://cdn.origene.com/chromatograms/mg2711_a07.zip

Restriction Sites: SgfI-MluI

Cloning Scheme:

Cloning sites used for ORF Shuttling:



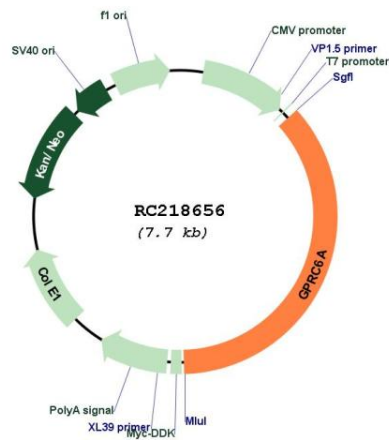
* The last codon before the Stop codon of the ORF

ACCN: NM_148963

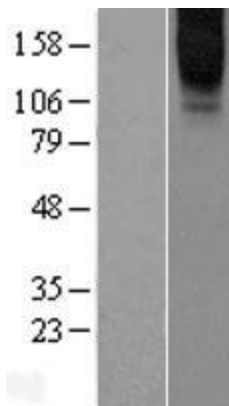
ORF Size: 2778 bp

OTI Disclaimer:	The molecular sequence of this clone aligns with the gene accession number as a point of reference only. However, individual transcript sequences of the same gene can differ through naturally occurring variations (e.g. polymorphisms), each with its own valid existence. This clone is substantially in agreement with the reference, but a complete review of all prevailing variants is recommended prior to use. More info
OTI Annotation:	This clone was engineered to express the complete ORF with an expression tag. Expression varies depending on the nature of the gene.
Components:	The ORF clone is ion-exchange column purified and shipped in a 2D barcoded Matrix tube containing 10ug of transfection-ready, dried plasmid DNA (reconstitute with 100 ul of water).
Reconstitution Method:	<ol style="list-style-type: none">1. Centrifuge at 5,000xg for 5min.2. Carefully open the tube and add 100ul of sterile water to dissolve the DNA.3. Close the tube and incubate for 10 minutes at room temperature.4. Briefly vortex the tube and then do a quick spin (less than 5000xg) to concentrate the liquid at the bottom.5. Store the suspended plasmid at -20°C. The DNA is stable for at least one year from date of shipping when stored at -20°C.
RefSeq:	NM_148963.4
RefSeq Size:	2860 bp
RefSeq ORF:	2781 bp
Locus ID:	222545
UniProt ID:	Q5T6X5
Cytogenetics:	6q22.1
Protein Families:	Druggable Genome, Transmembrane
MW:	104.6 kDa
Gene Summary:	Members of family C of the G protein-coupled receptor (GPCR) superfamily, such as GPCRC6A, are characterized by an evolutionarily conserved amino acid-sensing motif linked to an intramembranous 7-transmembrane loop region. Several members of GPCR family C, including GPCRC6A, also have a long N-terminal domain (summary by Pi et al., 2005 [PubMed 16199532]).[supplied by OMIM, Nov 2010]

Product images:



Circular map for RC218656



Western blot validation of overexpression lysate (Cat# [LY407708]) using anti-DDK antibody (Cat# [TA50011-100]). Left: Cell lysates from untransfected HEK293T cells; Right: Cell lysates from HEK293T cells transfected with RC218656 using transfection reagent MegaTran 2.0 (Cat# [TT210002]).