

Product datasheet for RC218654

CA150 (TCERG1) (NM_001040006) Human Tagged ORF Clone

Product data:

Product Type:	Expression Plasmids
Product Name:	CA150 (TCERG1) (NM_001040006) Human Tagged ORF Clone
Tag:	Myc-DDK
Symbol:	CA150
Synonyms:	CA150; TAF2S; Urn1
Mammalian Cell Selection:	Neomycin
Vector:	pCMV6-Entry (PS100001)
E. coli Selection:	Kanamycin (25 ug/mL)
ORF Nucleotide Sequence:	>RC218654 ORF sequence Red=Cloning site Blue=ORF Green=Tags(s)

TTTTGTAATACGACTCACTATAGGGCGGCCGGGAATTCGTCGACTGGATCCGGTACCGAGGAGATCTGCC
GCC**CGATCGCC**

ATGGCGGAGCGTGGCGGGACGGGGGCGAGAGTGAACGATTC AACCCGGGGAGCTCAGGATGGCCCAAC
AGCAGGCCTTGAGGTTCCGAGGTCGGCTCCCCACCAAATGCAGTGATGCGAGGCCACCACCTCTGAT
GCGACCTCCTCCACCTTTTGGTATGATGCGAGGCCCTCCTCCACCACCACGGCCGCCCTTTGGACGTCT
CCTTTTGATCCTAATATGCCCAATGCCTCCTCAGGAGGATACCTCCACCTATGGGCCCTCCACACC
TCCAGAGACCACCTTTCATGCCTCCTCCATGAGTTCCATGCCTCCTCCTCCGGGTATGATGTTTCCACC
AGGAATGCCTCCTGTGACTGCTCCTGGTACTCCAGCACTACCTCCTACGGAGGAGATATGGGTTGAAAAT
AAAACCTCCAGATGGGAAGGTTTATTATTATAATGCTCGGACACGTGAATCTGCATGGACCAAGCCAGATG
GAGTTAAGGTTATTAGCAATCAGAAGTACACCTATGCTTGCAGCCAGGCACAGGTTCCAGGCTCAGGC
CCAGGGCGCAGGCTCAGGCCCAGGCGCAGGCTCAGGCCCAGGCACAAGCTCAGGCCCAGGCTCAGGCTCAG
GCCAGGCCCAGGCCCAGGCCCAGGCCCAGGCCAAGCCCAAGCCAGGCCCAGGCTCAGGCTCAGGCAC
AAGCTCAGGCCCAGGCCCAGGCTCAGGTCAGGCCCAGGTCAGGCACAAGTGAAGCACAAGCAGTTGG
AGCTTCCACCCCTACGACCAGTAGCCAGCACCTGCAGTATCCACTTCAACATCATCATCCACCCCTTCC
TCTACCCTTCTACCACAACAAGTACTTTCAGTTGCGCAGACAGTATCAACACCCACAACAAGATC
AGACCCCAAGTTCTGCTGTTTCAGTTGCCAGCCTACAGTTAGTGTTCAACTCCTGCTCCTACAGCCAC
ACCTGTGCAAACCGTTCCCCAGCCGACCCCTCAGACGTTACCTCCTGCTGTTCTCATTAGTACCTCAG
CCAACAACAGCAATACCTGCTTTTCCACCAGTAATGGTACCTCCGTTTTCGTGTTCCCTTCTGGCATGC
CAATTCACCTTCCAGGTGATTGCCAGGAATGGCCCTCCTATCGTACCCATGATACATCCCCAGGTTGC
TATTGCAGCTTCCCTGTACCTTAGCTGGAGCAACAGCAGTTTCTGAATGGACTGAATATAAACAGCA
GATGGGAAGACATATTATTATAATAATAGAACATTAGAATCAACCTGGGAAAAACCCCAAGAAGTAAAGG
AAAAAGAAAAGTTAGAAGAGAAGATTAAGAGCCAATTAAGAACCCTCTGAAGAGCCTCTGCCAATGGA
GACGGAGGAGGAGATCCTAAAGAAGAGCCTATAAAGGAGATAAAGGAGGAGCCCAAGAAGAGGAGATG



[View online »](#)

```
ACTGAAGAAGAAAAGGCTGCCAGAAGGCAAAGCCAGTTGCTACTGCTCCTATTCTGGTACTCCATGGT
GTGTCGTTTGACTGGTATGAGCGGGTCTTCTTTATAATCCCACCCTCGTCTTTCTATGTGGGACCG
ACCTGATGATCTGATTGGCAGGGCAGATGTTGACAAAATTATTCAGGAGCCCCCTCAAAAAAGGAATG
GAGGAATTGAAGAACTAAGGCACCAACTCCGACAATGCTGTCGATCCAAAAGTGGCAATTTCTCTATGA
GTGCAATTAAGAGGAACAAGAATTAATGGAAGAAATTAATGAAGATGAGCCTGTTAAAGCAAAAAACG
GAAGAGAGACGATAATAAAGACATTGACTCAGAGAAAAGAGTCCATGGAAGCTGAAATTAAGAGTGGC
CGAAAAGGGCCATTGTCCCTCTGGAGGCTCGAATGAAGCAGTCAAGGACATGCTGTAGAGAGAGGGG
TGTCGTCTTTTTCAACGTGGGAGAAGGAGTTGCACAAGTAGTTTTTGATCCCGGTACTIONTCTCAA
TCCTAAAGAGAGAAAAAGGTGTTTATGATGATGTAAGACCAGGGCAGAGGAAGAACGACGGGAAAAAG
AAAAATAAATAATGCAAGCCAAGGAAGATTTCAAAAAATGATGGAAGAAGCAAAATTTAATCCAAGAG
CAACTTTTAGTGAATTTGCAGCCAAGCATGCTAAAGATTCAAGATTCAAAGCAATTGAAAAGATGAAAGA
CCGAGAAGCCTTGTTAATGAGTTTGTGGCCGCTGCTAGGAAGAAAGAGAAAGAAGATTCGAAGACCAGA
GGTGAGAAGATTAATCGGATTTCTTTGAACTATTATCTAATCATCACTGGACAGTCAGTCTCGATGGA
GCAAAGTAAAAGACAAAGTAGAAAGTATCCACGTTACAAGCAGTAGATAGTTCATCAATGAGAGAAGA
CCTTTTCAAACAGTACATTGAAAAATAGCCAAGAATTTAGACTCAGAAAAAGAAAAGGAGCTTGAAGG
CAAGCCCATTGAGGCAAGCCTTCGAGAACGAGAAAAGGAGGTTCAAAAAGGCCGTTGAGAACAAACAA
AAGAAATAGATCGAGAGAGAGAGCAGCACAACGAGAAGAGCTATCCAGAAATTTCAAAGCTCTTCTGTC
TGACATGGTACGTTCTTCAGATGTGTCATGGTCTGATACTCGTAGGACCCCTCGAAAAGATCACCCTGG
GAATCTGGATCCTTATTGAAAGAGAGGAGAAAGAGAAGCTTTTTAATGAACACATTGAAGCACTTACCA
AAAAAAGAGAGAGCACTTTAGGCAACTTCTGGATGAACTTCTGCAATTACCTAACATCCACATGGAA
AGAAGTAAAAAATCATTAAAGGAAGATCCTCGATGTATTAAGTTCTCTCCAGTGACAGGAAAAACAA
AGAGAATTTGAAGATATATCAGAGACAAATATACACAGCCAAAGCTGACTTCAGGACGCTTTTGAAAG
AGACCAATTTAACAATATAGATCCAAAAATTAATCCAAGAATCGGATCAGCACCTGAAAGATGTAGA
AAAAATTTTACAGAATGACAAACGGTATCTAGTACTGGACTGTGTGCCAGAGGAGAGGCGTAAACTGATT
GTGGCATATGTTGATGACCTGGATCGCCGGGTCCACCCACCTCCACAGCATCGAGCCCACGAGAC
GATCAACAAA
```

ACGCGTACGCGGGCCGCTCGAGCAGAACTCATCTCAGAAGAGGATCTGGCAGCAATGATATCCTGGATT
ACAAGGATGACGACGATAAGGTTTAA

Protein Sequence:

>RC218654 protein sequence
Red=Cloning site Green=Tags(s)

```
MAERGGDGGESERFNPGLRMAQQALRFRGPAPPNAVMRGPPPLMRPPPPFGMMRGPPPPPPPPFGRP
PFDPNMPPMPGGIPPPMGPHLQRPPFMPPMSSMPPPPGMMFPPGMPVTPAGTPALPPTTEIWWEN
KTPDGKVVYYNARTRESAWTKPDGVKVIQQSELTPMLAAQAQVQAQAQAQAQAQAQAQAQAQAQAQAQ
AQQAQAQAQAQAQAQAQAQAQAQAQAQAQAQAQAQAQAQAQAQAQAQAQAQAQAQAQAQAQAQAQ
AQQAQAQAQAQAQAQAQAQAQAQAQAQAQAQAQAQAQAQAQAQAQAQAQAQAQAQAQAQAQAQAQA
STTSTTTTATSVAQTVSTPTTQDQTPSSAVSVATPTVSVSTPAPTATPVQTPVQPHQTLPPAVPHSVPQ
PTTAIPAFPPVMVPPFRVPLPGMPIPLPGVLPGMAPPVPMIHPQVAIAASPTLAGATAVSEWTEYKTA
DGKTYYYNRTLESTWEKQPQLKEKEKLEEKIKEPIKEPSEEPLMETEEEDPKEEPIKEIKEEPKEEEM
TEEEKAAQKAKPVATAPIPGTPWCVVWTDERVFYFNPTTRL SMWDRPDDLIGRADVDKIIQEPHKKGM
EELKCLRHPPTMLSIQKQFMSAIKEEQELMEEINEDEPVKAKKRKDDNKIDSEKEAAMEAEIKAA
RERAIVPLEARMKQFKDMLLERGVSAFSTWEKELHKIVFDPYRLLNPKERKQVFDQYVKTRAEERREK
KNKIMQAKEDFKMMEEAKFNPRATFSEFAAKHAKDSRFKAIEKMKDREALFNEFVAAARKKEKEDSKTR
GEKIKSDFFELL SNHLLDSQSRWSKVVDKVESDPYKAVDSSSMREDLFKQYIEKIAKNLDSEKEKELER
QARIEASLREREREVQKARSEQTEIDREREQHKREEAIQNFKALLSDMVRSSDVSWSDRRTLRLKDRHW
ESGSLLEREEKEKLFNEHIEALTKKKREHFRQLLDETSAILTLSTWKEVKKIIKEDPRCIKFSSSDRKKQ
REFEYIRDKYITAKADFRTLLKETKITRYSKLIQESDQHLKDVEKILQNDKRYLVLDVPEERRKLI
VAYVDDLDRRGPPPPPTASEPTRSTK
```

TRTRPLEQKLISEEDLAANDILDYKDDDDKV

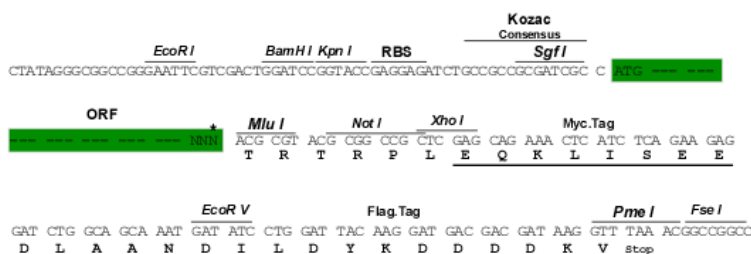
Chromatograms:

https://cdn.origene.com/chromatograms/mk6561_g12.zip

Restriction Sites: SgfI-MluI

Cloning Scheme:

Cloning sites used for ORF Shuttling:



* The last codon before the Stop codon of the ORF

ACCN: NM_001040006

ORF Size: 3231 bp

OTI Disclaimer: The molecular sequence of this clone aligns with the gene accession number as a point of reference only. However, individual transcript sequences of the same gene can differ through naturally occurring variations (e.g. polymorphisms), each with its own valid existence. This clone is substantially in agreement with the reference, but a complete review of all prevailing variants is recommended prior to use. [More info](#)

OTI Annotation: This clone was engineered to express the complete ORF with an expression tag. Expression varies depending on the nature of the gene.

Components: The ORF clone is ion-exchange column purified and shipped in a 2D barcoded Matrix tube containing 10ug of transfection-ready, dried plasmid DNA (reconstitute with 100 ul of water).

Reconstitution Method:

1. Centrifuge at 5,000xg for 5min.
2. Carefully open the tube and add 100ul of sterile water to dissolve the DNA.
3. Close the tube and incubate for 10 minutes at room temperature.
4. Briefly vortex the tube and then do a quick spin (less than 5000xg) to concentrate the liquid at the bottom.
5. Store the suspended plasmid at -20°C. The DNA is stable for at least one year from date of shipping when stored at -20°C.

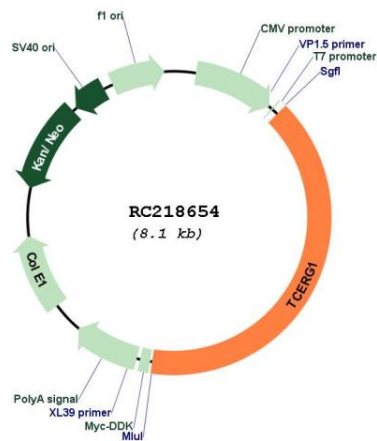
RefSeq: NM_001040006.1, NP_001035095.1

RefSeq Size: 4170 bp

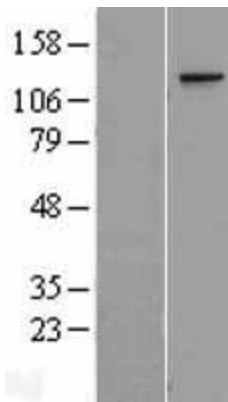
RefSeq ORF: 3234 bp

Locus ID: 10915

UniProt ID: [O14776](#)
Cytogenetics: 5q32
Protein Families: Stem cell - Pluripotency, Transcription Factors
Protein Pathways: Spliceosome
MW: 121.7 kDa
Gene Summary: This gene encodes a nuclear protein that regulates transcriptional elongation and pre-mRNA splicing. The encoded protein interacts with the hyperphosphorylated C-terminal domain of RNA polymerase II via multiple FF domains, and with the pre-mRNA splicing factor SF1 via a WW domain. Alternative splicing results in multiple transcripts variants encoding different isoforms. [provided by RefSeq, Jul 2008]

Product images:


Circular map for RC218654



Western blot validation of overexpression lysate (Cat# [LY421873]) using anti-DDK antibody (Cat# [TA50011-100]). Left: Cell lysates from untransfected HEK293T cells; Right: Cell lysates from HEK293T cells transfected with RC218654 using transfection reagent MegaTran 2.0 (Cat# [TT210002]).