

## Product datasheet for **RC218648**

### ARSK (NM\_198150) Human Tagged ORF Clone

#### Product data:

Product Type:	Expression Plasmids
Product Name:	ARSK (NM_198150) Human Tagged ORF Clone
Tag:	Myc-DDK
Symbol:	ARSK
Synonyms:	TSULF
Mammalian Cell Selection:	Neomycin
Vector:	pCMV6-Entry (PS100001)
E. coli Selection:	Kanamycin (25 ug/mL)



[View online »](#)

**ORF Nucleotide Sequence:**

>RC218648 ORF sequence  
 Red=Cloning site Blue=ORF Green=Tags(s)

TTTTGTAATACGACTCACTATAGGGCGGCCGGAATTCGTCGACTGGATCCGGTACCGAGGAGATCTGCC  
 GCC**CGATCGCC**

ATGCTACTGCTGTGGGTGTCGGTGGTCGCAGCCTTGGCGTGGCGGTACTGGCCCCGGAGCAGGGGAGC  
 AGAGGCGGAGAGCAGCCAAAGCGCCAATGTGGTGTGGTCGTGAGCGACTCCTTCGATGGAAGGTTAAC  
 ATTTTCATCCAGGAAGTCAGGTAGTGAACTTCTTTTATCAACTTTATGAAGACCGTGGGACTTCTTTT  
 CTGAATGCCTACACAACTCTCCAATTTGTTGCCCATCACGCGCAGCAATGTGGAGTGGCCTCTTCACTC  
 ACTTAACAGAATCTTGAATAATTTAAGGGTCTAGATCCAAATTATACAACATGGATGGATGTCATGGA  
 GAGGCATGGCTACCGAACACAGAAATTTGGAACTGGACTATACTTCAGGACATCACTCCATTAGTAAT  
 CGTGTGGAAGCGTGGACAAGAGATGTTGCTTTCTTACTCAGACAAGAAGGCAGGCCCATGGTTAATCTTA  
 TCCGTAACAGGACTAAAGTCAGAGTGATGGAAGGGATTGGCAGAATACAGACAAAGCAGTAACTGGTT  
 AAGAAAGGAAGCAATTAATTACTGAACATTTGTTATTTACTTGGGATTAATTTACCACACCCTTAC  
 CCTTCACCATCTTCTGGAGAAAATTTGGATCTTCAACATTTACACATCTCTTTATTGGCTTGAAAAAG  
 TGCTCATGATGCCATCAAAATCCCAAAGTGGTCACCTTTGTGAGAAATGCACCTGTAGATTACTT  
 TTCTTATACAAAAACTGCACTGGAAGATTTACAAAAAGAAATTAAGAATATTAGAGCATTTTATTAT  
 GCTATGTGTGCTGAGACAGATGCCATGCTTGGTGAATATTTTGGCCCTTCATCAATTAGATCTTCTTC  
 AGAAAATATTGTCATATACTCCTCAGACCATGGAGAGCTGGCCATGGAACATCGACAGTTTTATAAAAT  
 GAGCATGTACGAGGCTAGTGCACATGTTCCGCTTTTGTATGATGGGACCAGGAATTAAGCCGGCCTACAA  
 GTATCAAAATGTGGTTTCTCTTGTGGATATTTACCTACCATGCTTGATATTGCTGGAATTCCTCTGCCTC  
 AGAACCTGAGTGGATACTTTTGTGGTATCATCAGAAACATTTAAGAATGAACATAAAGTCAAAAA  
 CCTGCATCCACCCTGGATTCTGAGTGAATTCATGGATGTAATGTGAATGCCTCCACCTACATGCTTCGA  
 ACTAACCACTGGAATATATAGCCTATTCGGATGGTGCATCAATATTGCCTCAACTCTTTGATCTTTCT  
 CGGATCCAGATGAATTAACAAATGTTGCTGTAATAATTTCCAGAAATTAATTATTCTTTGGATCAGAAGCT  
 TCATTCCATTATAAACTACCCTAAAGTTTCTGCTTCTGTCCACCAGTATAATAAAGAGCAGTTTATCAAG  
 TGGAAACAAAGTATAGGACAGAATTATTCAAACGTTATAGCAAATCTTAGGTGGCACCAAGACTGGCAGA  
 AGGAACCAAGGAAGTATGAAAATGCAATTGATCAGTGGCTTAAACCCATATGAATCCAAGAGCAGTT

**ACGCGT**ACGCGGCCGCTCGAGCAGAACTCATCTCAGAAGAGGATCTGGCAGCAAATGATATCCTGGATT  
 ACAAGGATGACGACGATAAGGTTTAA

**Protein Sequence:**

>RC218648 protein sequence  
 Red=Cloning site Green=Tags(s)

MLLLWVSVAALALAVLAPGAGEQRRRAAKAPNVVLVSDSFDGRLTFHPGSQVVKLPFVINFMKTRGTSF  
 LNAYTNSPICPSRAAMWSGLFTHLTESWNNFKGLDPNYTTWMDVMERHGYRTQKFGKLDYTSGHHSISN  
 RVEAWTRDVAFLLRQEGRPMVNLIRNRKVRVMERDWNQNTDKAVNWLKEAINYTEPFVIYGLNLPHPY  
 PSPSSGENFGSSTFHTSLYWLEKVSHTDAIKIPKWSPLSEMHPVDYSSYTKNCTGRFTKKEIKNIRAFYY  
 AMCAETDAMLGEIILALHQLDLLQKTIVYSSDHGELAMEHRQFYKMSMYEASAHVPLLMMPGPIKAGLQ  
 VSNVVSVDIYPTMLDIAGIPLPQNL SGYSLPLSSETFKNEHKVKNLHPPWILSEFHGCNVNASTYMLR  
 TNHWKYIAYS DGASILPQLFDLSSDPDEL TNVAVKFP EITYSLDQKLHSIINYPKVSASVHQYNKEQFIK  
 WKQSIGQYNSVIANLRWHQDWQKEPRKYENAIDQWLKTHMNPRAV

**TRTRPLEQKLI**SEEDLAANDILDYKDDDDKV

**Chromatograms:**

[https://cdn.origene.com/chromatograms/mk6606\\_g05.zip](https://cdn.origene.com/chromatograms/mk6606_g05.zip)

**Restriction Sites:**

Sgfl-MluI

**Cloning Scheme:**


**ACCN:** NM\_198150

**ORF Size:** 1608 bp

**OTI Disclaimer:** The molecular sequence of this clone aligns with the gene accession number as a point of reference only. However, individual transcript sequences of the same gene can differ through naturally occurring variations (e.g. polymorphisms), each with its own valid existence. This clone is substantially in agreement with the reference, but a complete review of all prevailing variants is recommended prior to use. [More info](#)

**OTI Annotation:** This clone was engineered to express the complete ORF with an expression tag. Expression varies depending on the nature of the gene.

**Components:** The ORF clone is ion-exchange column purified and shipped in a 2D barcoded Matrix tube containing 10ug of transfection-ready, dried plasmid DNA (reconstitute with 100 ul of water).

**Reconstitution Method:**

1. Centrifuge at 5,000xg for 5min.
2. Carefully open the tube and add 100ul of sterile water to dissolve the DNA.
3. Close the tube and incubate for 10 minutes at room temperature.
4. Briefly vortex the tube and then do a quick spin (less than 5000xg) to concentrate the liquid at the bottom.
5. Store the suspended plasmid at -20°C. The DNA is stable for at least one year from date of shipping when stored at -20°C.

**RefSeq:** [NM\\_198150.3](#)

**RefSeq Size:** 3345 bp

**RefSeq ORF:** 1611 bp

**Locus ID:** 153642

**UniProt ID:** [Q6UWY0](#)

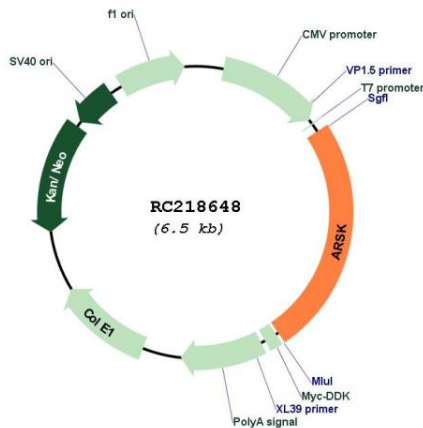
**Cytogenetics:** 5q15

**Protein Families:** Druggable Genome, Secreted Protein, Transmembrane

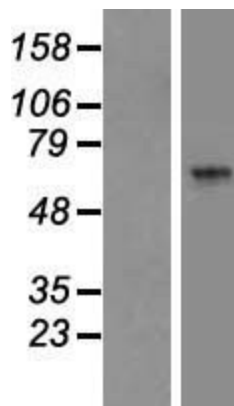
**MW:** 61.5 kDa

**Gene Summary:** Sulfatases (EC 3.1.5.6), such as ARSK, hydrolyze sulfate esters from sulfated steroids, carbohydrates, proteoglycans, and glycolipids. They are involved in hormone biosynthesis, modulation of cell signaling, and degradation of macromolecules (Sardiello et al., 2005 [PubMed 16174644]).[supplied by OMIM, Mar 2008]

**Product images:**



Circular map for RC218648



Western blot validation of overexpression lysate (Cat# [LY405061]) using anti-DDK antibody (Cat# [TA50011-100]). Left: Cell lysates from untransfected HEK293T cells; Right: Cell lysates from HEK293T cells transfected with RC218648 using transfection reagent MegaTran 2.0 (Cat# [TT210002]).