

Product datasheet for **RC218646**

MARCHF2 (NM_001005416) Human Tagged ORF Clone

Product data:

Product Type: Expression Plasmids
Product Name: MARCHF2 (NM_001005416) Human Tagged ORF Clone
Tag: Myc-DDK
Symbol: MARCHF2
Synonyms: HSPC240; MARCH-II; MARCH2; RNF172
Mammalian Cell Selection: Neomycin
Vector: pCMV6-Entry (PS100001)
E. coli Selection: Kanamycin (25 ug/mL)
ORF Nucleotide Sequence: >RC218646 representing NM_001005416
Red=Cloning site Blue=ORF Green=Tags(s)

TTTTGTAATACGACTCACTATAGGGCGGCCGGAATTCGTCGACTGGATCCGGTACCGAGGAGATCTGCC
GCC**CGATCGCC**

ATGACGACGGGTGACTGCTGCCACCTCCCCGGCTCCCTGTGTGACTGCTCCGGCAGCCCTGCCTTCTCCA
AGGTCGTGGAGGCTACGGGCCTCGGACCGCCAGTATGTGGCACAGGTGACTTCAAGGGATGGCCGGCT
CCTCTCCACCGTCATCCGTGCCTTGGACACACCGAGTATGGTCTTTCTGCCGGATCTGCCATGAGGGA
GCGAACGGGGAGTGTCTGTCCCGTGTGGCTGCACCGGCACGCTGGGTGCCGTGCATAAGAGCTGTC
TGGAGAAGTGGCTTTCCTCATCTAACACCAGCTACTGCGAGCTGTCCACACGGAGTTTGCAGTGGAGAA
ACGGCCTCGACCCCTCACAGAGGTCTCCTTCCGCTACCACTGCCAGCTGTACTCCGAGTGGAGAAAGACC
AACCAGAAAGTTCGCCTGAAGATCCGGGAGGCGGACAGCCCCGAGGGCCCCCAGCATTCTCCACTGGCAG
CTGGACTCCTGAAGAAGGTGGCAGAGGAGACACCACTA

ACGCGTACGCGGCCGCTCGAGCAGAACTCATCTCAGAAGAGGATCTGGCAGCAAATGATATCCTGGATT
ACAAGGATGACGACGATAAGGTTTAA

Protein Sequence: >RC218646 representing NM_001005416
Red=Cloning site Green=Tags(s)

MTTGDCCHLPGSLCDCSGSPAFSKVVEATGLGPPQYVAQVTSRDGRLSTVIRALDTPSDGPFGRICHEG
ANGECLLSPCGCTGLGAVHKSCLEKWLSSNNTSYCELCHTEFAVEKRPRPLTEVSFRYHCQLYSEWRKT
NQKVRLKIREADSPEGPQHSPLAAGLLKKVAEETPV

TRTRPLEQKLISEEDLAANDILDYKDDDDKV

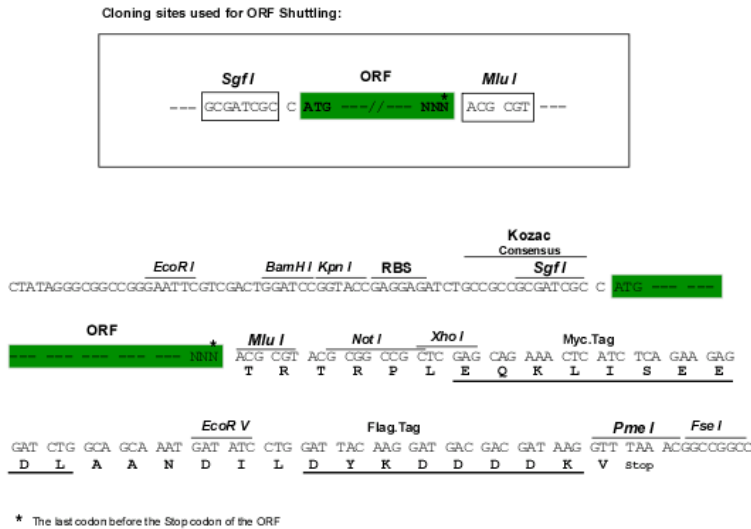
Chromatograms: https://cdn.origene.com/chromatograms/mk6505_g12.zip



[View online »](#)

Restriction Sites: SgfI-MluI

Cloning Scheme:



ACCN: NM_001005416

ORF Size: 528 bp

OTI Disclaimer: Due to the inherent nature of this plasmid, standard methods to replicate additional amounts of DNA in E. coli are highly likely to result in mutations and/or rearrangements. Therefore, OriGene does not guarantee the capability to replicate this plasmid DNA. Additional amounts of DNA can be purchased from OriGene with batch-specific, full-sequence verification at a reduced cost. Please contact our customer care team at custsupport@origene.com or by calling 301.340.3188 option 3 for pricing and delivery.

The molecular sequence of this clone aligns with the gene accession number as a point of reference only. However, individual transcript sequences of the same gene can differ through naturally occurring variations (e.g. polymorphisms), each with its own valid existence. This clone is substantially in agreement with the reference, but a complete review of all prevailing variants is recommended prior to use. [More info](#)

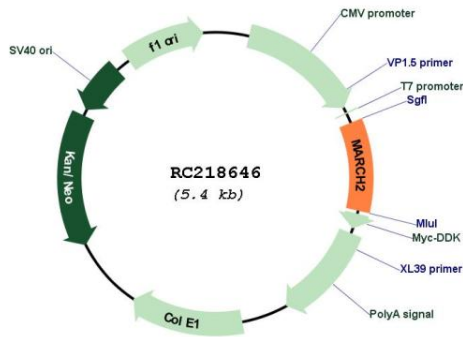
OTI Annotation: This clone was engineered to express the complete ORF with an expression tag. Expression varies depending on the nature of the gene.

Components: The ORF clone is ion-exchange column purified and shipped in a 2D barcoded Matrix tube containing 10ug of transfection-ready, dried plasmid DNA (reconstitute with 100 ul of water).

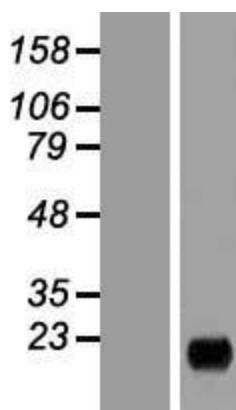
- Reconstitution Method:**
1. Centrifuge at 5,000xg for 5min.
 2. Carefully open the tube and add 100ul of sterile water to dissolve the DNA.
 3. Close the tube and incubate for 10 minutes at room temperature.
 4. Briefly vortex the tube and then do a quick spin (less than 5000xg) to concentrate the liquid at the bottom.
 5. Store the suspended plasmid at -20°C. The DNA is stable for at least one year from date of shipping when stored at -20°C.

RefSeq:	NM_001005416.2
RefSeq Size:	1224 bp
RefSeq ORF:	531 bp
Locus ID:	51257
UniProt ID:	Q9P0N8
Cytogenetics:	19p13.2
Protein Families:	Druggable Genome, Transmembrane
MW:	18.9 kDa
Gene Summary:	MARCH2 is a member of the MARCH family of membrane-bound E3 ubiquitin ligases (EC 6.3.2.19). MARCH enzymes add ubiquitin (see MIM 191339) to target lysines in substrate proteins, thereby signaling their vesicular transport between membrane compartments. MARCH2 reduces surface accumulation of several glycoproteins and appears to regulate early endosome-to-trans-Golgi network (TGN) trafficking (Bartee et al., 2004 [PubMed 14722266]; Nakamura et al., 2005 [PubMed 15689499]).[supplied by OMIM, Mar 2010]

Product images:



Circular map for RC218646



Western blot validation of overexpression lysate (Cat# [LY423721]) using anti-DDK antibody (Cat# [TA50011-100]). Left: Cell lysates from untransfected HEK293T cells; Right: Cell lysates from HEK293T cells transfected with RC218646 using transfection reagent MegaTran 2.0 (Cat# [TT210002]).