

Product datasheet for **RC218645**

TCEA1 (NM_201437) Human Tagged ORF Clone

Product data:

Product Type: Expression Plasmids
Product Name: TCEA1 (NM_201437) Human Tagged ORF Clone
Tag: Myc-DDK
Symbol: TCEA1
Synonyms: GTF2S; SII; TCEA; TF2S; TFIS
Mammalian Cell Selection: Neomycin
Vector: pCMV6-Entry (PS100001)
E. coli Selection: Kanamycin (25 ug/mL)
ORF Nucleotide Sequence: >RC218645 representing NM_201437
Red=Cloning site Blue=ORF Green=Tags(s)

TTTTGTAATACGACTCACTATAGGGCGGCCGGAATTCGTCGACTGGATCCGGTACCGAGGAGATCTGCC
GCC**CGATCGCC**

ATGGAGGACGAAGTGGTCCGCTTTGCCAAGAAGATGGACAAGATGGTGCAGAAGAAGAACCGCTCCACAA
GAATCGGAATGTCAGTTAATGCTATTCGCAAGCAGAGTACAGATGAGGAAGTTACATCTTTGGCAAAGTC
TCTCATCAAATCCTGGAAAAATATTAGATGGGCCATCAACTGAGAAAGACCTTGACGAAAAGAAGAAA
GAACCTGCAATTACATCGCAGAACAGCCCTGAGGCAAGAGAAGAAAGTACTTCCAGCGGCAATGTAAGCA
ACAGAAAGGATGAGACAAATGCTCGAGATACTTATGTTTCATCCTTTCTCGGGCACCAAGCACTTCTGA
TTCTGTGCGGTTGAAGTGTAGGGAGATGCTTGCTGCAGCTCTTGAACAGGGGATGACTACATTGCAATT
GGAGCTGATGAGGAAGATTAGGATCTCAAATTGAAGAAGCTATATATCAAGAAATAAGGAATACAGACA
TGAAATACAAAAATAGAGTACGAAGTAGGATATCAAATCTTAAAGATGCAAAAAATCCAAATTTAAGGAA
AAATGTCTCTGTGGGAATATTCCTCCTGACTTATTTGCTAGAATGACAGCAGAGGAAATGGCTAGTGAT
GAGCTGAAAGAGATGCGGAAAACTTGACCAAAGAAGCCATCAGAGAGCATCAGATGGCCAAAGACTGGTG
GGACCCAGACTGACTTGTTCACATGTGGCAAATGTAAAAAGAAGAATTGCACTTACACACAGGTACAAC
CCGTAGTGCTGATGAACCAATGACAACATTTGTGTCTGTAATGAATGTGGAATCGATGGAAGTTCTGT

AG**CGGACCG**ACGCGTACGCGGCCGCTCGAGCAGAAACTCATCTCAGAAGAGGATCTGGCAGCAAATGATATCC
TGGATTACAAGGATGACGACGATAAGGTTTAA



[View online »](#)

Protein Sequence: >RC218645 representing NM_201437
Red=Cloning site Green=Tags(s)

```
MEDEVVRFakkMDKMVQKKNASTRIGMSVNAIRKQSTDEEVTSLAKSLIKSWKLLDGPSTEKDLDEKKK
EPAITSQNSPEAREESTSSGNVSNRKDETNARDTYVSSFPAPSTSDSVRLKCREMLAAALRTGDDYIAI
GADEEELGSGIIEEAIYQEIRNTDMKYKNRVRSRISNLKDAKNPNLRKNVLCGNIPDLFARMTAEEMASD
ELKEMRKNLTKEAIREHQMAKTGGTQTDLFTCGKCKKNCTYTVQVQTRSADPMTTFVVCNECGNRWKFC
```

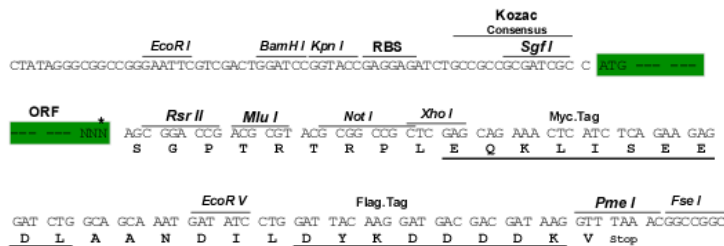
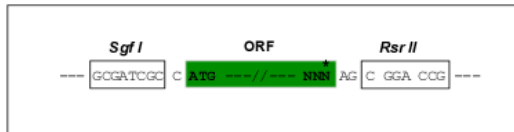
SGPTRRRLEQKLISEEDLAANDILDYKDDDDKV

Chromatograms: https://cdn.origene.com/chromatograms/mk8020_h06.zip

Restriction Sites: SgfI-RsrII

Cloning Scheme:

Cloning sites used for ORF Shuttling:



* The last codon before the Stop codon of the ORF

ACCN: NM_201437

ORF Size: 840 bp

OTI Disclaimer: The molecular sequence of this clone aligns with the gene accession number as a point of reference only. However, individual transcript sequences of the same gene can differ through naturally occurring variations (e.g. polymorphisms), each with its own valid existence. This clone is substantially in agreement with the reference, but a complete review of all prevailing variants is recommended prior to use. [More info](#)

OTI Annotation: This clone was engineered to express the complete ORF with an expression tag. Expression varies depending on the nature of the gene.

Components: The ORF clone is ion-exchange column purified and shipped in a 2D barcoded Matrix tube containing 10ug of transfection-ready, dried plasmid DNA (reconstitute with 100 ul of water).

Reconstitution Method:

1. Centrifuge at 5,000xg for 5min.
2. Carefully open the tube and add 100ul of sterile water to dissolve the DNA.
3. Close the tube and incubate for 10 minutes at room temperature.
4. Briefly vortex the tube and then do a quick spin (less than 5000xg) to concentrate the liquid at the bottom.
5. Store the suspended plasmid at -20°C. The DNA is stable for at least one year from date of shipping when stored at -20°C.

Note: Plasmids are not sterile. For experiments where strict sterility is required, filtration with 0.22um filter is required.

RefSeq: [NM_201437.3](#)

RefSeq Size: 2721 bp

RefSeq ORF: 843 bp

Locus ID: 6917

UniProt ID: [P23193](#)

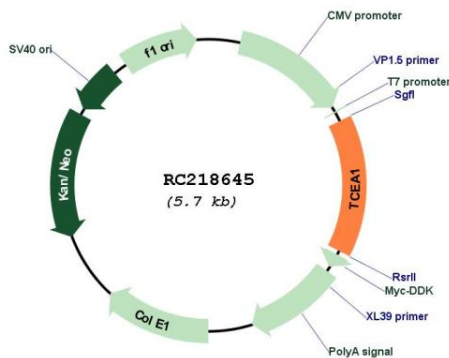
Cytogenetics: 8q11.23

Protein Families: Transcription Factors

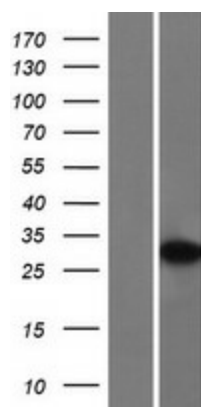
MW: 31.5 kDa

Gene Summary: Necessary for efficient RNA polymerase II transcription elongation past template-encoded arresting sites. The arresting sites in DNA have the property of trapping a certain fraction of elongating RNA polymerases that pass through, resulting in locked ternary complexes. Cleavage of the nascent transcript by S-II allows the resumption of elongation from the new 3'-terminus.[UniProtKB/Swiss-Prot Function]

Product images:



Circular map for RC218645



Western blot validation of overexpression lysate (Cat# [LY404419]) using anti-DDK antibody (Cat# [TA50011-100]). Left: Cell lysates from untransfected HEK293T cells; Right: Cell lysates from HEK293T cells transfected with RC218645 using transfection reagent MegaTran 2.0 (Cat# [TT210002]).