

## Product datasheet for **RC218644**

### HRP2 (HDGFRP2) (NM\_032631) Human Tagged ORF Clone

#### Product data:

Product Type:	Expression Plasmids
Product Name:	HRP2 (HDGFRP2) (NM_032631) Human Tagged ORF Clone
Tag:	Myc-DDK
Symbol:	HRP2
Synonyms:	HDGF-2; HDGF2; HDGFRP2; HRP-2; HRP2
Mammalian Cell Selection:	Neomycin
Vector:	pCMV6-Entry (PS100001)
E. coli Selection:	Kanamycin (25 ug/mL)



[View online »](#)

ORF Nucleotide  
Sequence:

>RC218644 representing NM\_032631  
Red=Cloning site Blue=ORF Green=Tags(s)

TTTTGTAATACGACTCACTATAGGGCGGCCGGGAATTCGTCGACTGGATCCGGTACCGAGGAGATCTGCC  
GCC**CGGATCGCC**

ATGCCACACGCCCTCAAGCCCGGGGACTTGGTGTTCGCTAAGATGAAGGGCTACCCTCACTGGCCTGCCA  
GGATCGACGACATCGCGGATGGCGCCGTGAAGCCCCACCAACAAGTACCCCATCTTTTCTTTGGCAC  
ACACGAAACAGCCTTCTGGGACCAAGGACTGTTCCCTACGACAAATGTAAGACAAGTACGGGAAG  
CCCAACAAGAGGAAAGGCTTCAATGAAGGGCTGTGGGAGATCCAGAACAACCCACGCCAGCTACAGCG  
CCCCTCCGCCAGTGAGCTCCTCCGACAGCGAGGCCCGAGGCCAACCCCGCCGACGGCAGTGACGCTGA  
CGAGGACGATGAGGACCGGGGGTTCATGGCCGTACAGCGGTAACCGCCACAGCTGCCAGCGACAGGATG  
GAGAGCGACTCAGACTCAGACAAGAGTAGCGACAACAGTGGCTGAAGAGGAAGACGCCTGCGCTAAGA  
TGTCGGTCTCGAAACGAGCCGAAAGGCCTCCAGCGACCTGGATCAGGCCAGCGTGTCCCATCCGAAGA  
GGAGAACTCGAAAGCTCATCTGAGTCGGAGAAGACCAGCGACCAGGACTTCACACTGAGAAGAAAGCA  
GCGGTCCGGGCGCCACGGAGGGGCCCTCTGGGGGACGGAAGGAGGAGGCGCGTACGCTCCGACT  
CCGACTCCAAGGCCGATTTCGGACGGGGCAAGCCTGAGCCGGTGGCCATGGCGCGGTCCGGCTCCTCCTC  
CTCCTTCTCCTCCTCCTCCGACTCCGATGTGTCTGTGAAGAAGCCTCCGAGGGGCGAGGAAGCCAGCG  
GAGAAGCCTCTCCGAAGCCGCGAGGGCGGAAACCGAAGCCTGAACGGCCTCCGTCCAGCTCCAGCAGTG  
ACAGTGACAGCGACGAGGTGGACCCGATCAGTGAGTGAAGCGGGCGGACGAGGGCGGGAGGGCGGAGCT  
GGAGGCCCGGGCGGCGGAGAGCAGGAGGAGGAGCTGCGGCGCTGCGGGAGCAGGAGAAGGAGGAGAAG  
GAGCGGAGGCGGAGCGGGCCGACCGGGGAGGCTGAGCGGGCAGCGGGCAGCAGCGGGGACGAGCTC  
TCAGGGAGGACGATGAGCCGTCAGAAGCGGGGACCAAGGGCCGGGGCCGGGTCCCCGTCTCCTC  
TGACTCCGAGCCGAGCCGAGCTGGAGAGAGAGGCCAAGAAATCAGCGAAGAAGCCGAGTCTCAAGC  
ACAGAGCCCGCCAGGAAACCTGGCCAGAAGGAGAAGAGAGTGCGGCCGAGGAGAAGCAACAAGCCAAGC  
CCGTGAAGGTGGAGCGGACCCGGAAGCGGTCCGAGGGCTTCTCGATGGACAGGAAGGTAGAGAAGAAGAA  
AGAGCCCTCCGTGGAGGAGAAGCTGCAGAAGCTGCACAGTGAGATCAAGTTTGCCTAAAGGTGACAGC  
CCGGACGTGAAGAGGTGCCTGAATGCCCTAGAGGAGCTGGGAACCCTGCAGGTGACCTCTCAGATCCTCC  
AGAAGAACACAGACGTGGTGGCCACCTTGAAGAAGATTCGCCGTTACAAAGCGAACAAGGACGTAATGGA  
GAAGGCAGCAGAAGTCTATACCCGGCTCAAGTCGCGGTCTCGGCCAAAGATCGAGGGGTGCAGAAA  
GTGAACAAGGCTGGGATGGAGAAGGAGAAGGCCGAGGAGAAGCTGGCCGGGAGGAGCTGGCCGGGAGG  
AGGCCCCCAGGAGAAGGCGGAGGACAAGCCAGCACCGATCTCTCAGCCCCAGTGAATGGCGAGGCCAC  
ATCACAGAAGGGGAGAGCGCAGAGGACAAGGAGCACGAGGAGGGTGGGACTCGGAGGAGGGGCAAGG  
TGTGGCTCCTCTGAAGACCTGCACGACGTACGGGAGGGTCCCAGCTGGACAGGCCCTGGAGCGACCCGG  
AGGAGCGGAGAGGGCACGGGGGACTCGGAGGCCCTGGACGAGGAGAGC

**ACGCGT**ACGCGGCCGCTCGAGCAGAACTCATCTCAGAAGAGGATCTGGCAGCAATGATATCCTGGATT  
ACAAGGATGACGACGATAAGGTTTAA

**Protein Sequence:** >RC218644 representing NM\_032631  
Red=Cloning site Green=Tags(s)

MPHAFKPGDLVFAKMKGYPHWPARIIDDIADGAVKPPPNKYPIFFFGTHETAFLGPKDLFPYDKCKDKYGG  
 PNKRKGFNEGLWEIQNNPHASYSAPPPVSSSDSEAPEANPADGSDADEDEDGRGMAVAVTATAASDRM  
 ESDSDSKSSDNLKRRKTPALKMSVSKRARKASSDLQASVSPSEEENSESSSESEKTSQDFTPEKKA  
 AVRAPRRGPLGGRKKKKAPSASDSDSKADSDGAKPEPVAMARSASSSSSSSSSDVSVKPPRGRKPA  
 EKPLPKPRGRKPKPERPPSSSSSDSDSDEVDRISEWKRREARRRELEARRRREQEELRRLREQEKEEK  
 ERRRERADRGEAERGGSSGDELREDDEPVKKRGRKGRGPPSSSDSEPEAELEREAKKSAKKPQSSS  
 TEPARKPGQKEKRVPEEKQQAQPKVVERTRKRSEGFSDMRKVEKKKEPSVEEKLQKLHSEIKFALKVDS  
 PDVKRCLNALEELGTLQVTSQILQKNTDVVATLKKIRRYKANKDVMEAAEVYTRLKSRVLGPKIEAVQK  
 VNKAGMEKEKAEKLAGEEELAGEEAPQEKAEKDPSTDLAPVNGEATSQKGEAEDKEHEEGRDSEEGPR  
 CGSSEDLHDVREGPDLDRPGSDRQERERARGDSEALDEES

TRTRPLEQKLISEEDLAANDILDYKDDDDKV

**Chromatograms:** [https://cdn.origene.com/chromatograms/mk6162\\_f10.zip](https://cdn.origene.com/chromatograms/mk6162_f10.zip)

**Restriction Sites:** SgfI-MluI

**Cloning Scheme:**



**ACCN:** NM\_032631

**ORF Size:** 2010 bp

**OTI Disclaimer:** The molecular sequence of this clone aligns with the gene accession number as a point of reference only. However, individual transcript sequences of the same gene can differ through naturally occurring variations (e.g. polymorphisms), each with its own valid existence. This clone is substantially in agreement with the reference, but a complete review of all prevailing variants is recommended prior to use. [More info](#)

**OTI Annotation:** This clone was engineered to express the complete ORF with an expression tag. Expression varies depending on the nature of the gene.

**Components:** The ORF clone is ion-exchange column purified and shipped in a 2D barcoded Matrix tube containing 10ug of transfection-ready, dried plasmid DNA (reconstitute with 100 ul of water).

**Reconstitution Method:**

1. Centrifuge at 5,000xg for 5min.
2. Carefully open the tube and add 100ul of sterile water to dissolve the DNA.
3. Close the tube and incubate for 10 minutes at room temperature.
4. Briefly vortex the tube and then do a quick spin (less than 5000xg) to concentrate the liquid at the bottom.
5. Store the suspended plasmid at -20°C. The DNA is stable for at least one year from date of shipping when stored at -20°C.

**RefSeq:** [NM\\_032631.1](#)

**RefSeq Size:** 2341 bp

**RefSeq ORF:** 2013 bp

**Locus ID:** 84717

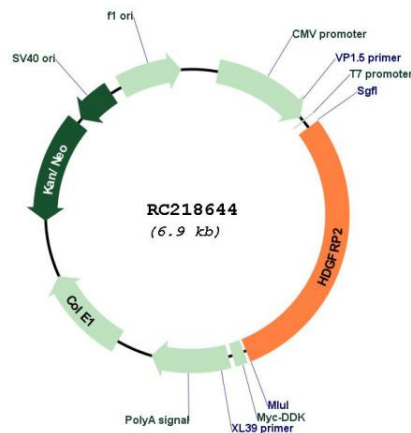
**UniProt ID:** [Q7Z4V5](#)

**Cytogenetics:** 19p13.3

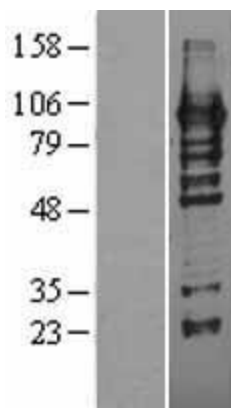
**MW:** 74 kDa

**Gene Summary:** This gene encodes a member of the hepatoma-derived growth factor (HDGF) family. The protein includes an N-terminal PWWP domain that binds to methyl-lysine-containing histones, with specific binding of this protein to tri-methylated lysines 36 and 79 of histone H3, and di- and tri-methylated lysine 20 of histone H4. The protein functions in LEDGF/p75-independent HIV-1 replication by determining HIV-1 integration site selection. Alternative splicing of this gene results in multiple transcript variants. [provided by RefSeq, Apr 2014]

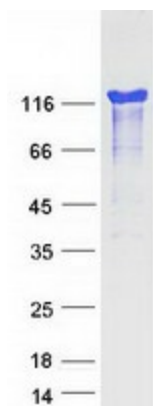
### Product images:



Circular map for RC218644



Western blot validation of overexpression lysate (Cat# [LY403180]) using anti-DDK antibody (Cat# [TA50011-100]). Left: Cell lysates from untransfected HEK293T cells; Right: Cell lysates from HEK293T cells transfected with RC218644 using transfection reagent MegaTran 2.0 (Cat# [TT210002]).



Coomassie blue staining of purified HDGFL2 protein (Cat# [TP318644]). The protein was produced from HEK293T cells transfected with HDGFL2 cDNA clone (Cat# RC218644) using MegaTran 2.0 (Cat# [TT210002]).