

## Product datasheet for RC218633

### KCNK7 (NM\_033347) Human Tagged ORF Clone

#### Product data:

Product Type:	Expression Plasmids
Product Name:	KCNK7 (NM_033347) Human Tagged ORF Clone
Tag:	Myc-DDK
Symbol:	KCNK7
Synonyms:	K2p7.1; TWIK3
Mammalian Cell Selection:	Neomycin
Vector:	pCMV6-Entry (PS100001)
E. coli Selection:	Kanamycin (25 ug/mL)
ORF Nucleotide Sequence:	>RC218633 representing NM_033347 Red=Cloning site Blue=ORF Green=Tags(s)

TTTTGTAATACGACTCACTATAGGGCGCCGGGAATTCGTCGACTGGATCCGGTACCGAGGAGATCTGCC  
GCC**CGATCGCC**

ATGGGGGGTCTAAGGCCCTGGTCCCGATACGGGCTCCTGGTTGTGGCCCACTTGCTGGCCCTGGGGCTTG  
GGGCTGTGGTGTCCAGGCCCTGGAGGGGCTCCTGCATGCAGGCTTCAGGCTGAGCTCAGGGCAGAGCT  
GGCAGCCTTCAGGCAGAGCATAGGGCCTGCCTGCCACCCGGAGCTCTGGAAGAGCTGTGGCACTGCC  
CTGGCCACCCAGGCCATGGGGTCTCCACCCTGGGCAACAGCTCAGAGGGCAGGACCTGGGACCTCCCT  
CAGCCCTGCTCTTCGCTGCCAGCATCCTCACCACACAGTTATGGCCACATGGCCCACTATCGCCAGG  
CGGAAAGGCCTTCTGCATGGTCTATGCAGCCCTGGGGCTGCCAGCCTCCTTAGCTCTCGTGGCCACCCTG  
CGCCATTGCCTGCTGCCTGTGCTCAGCCGCCACGTGCCTGGGTAGCGGTCCACTGGCAGCTGTCACCGG  
CCAGGGCTGCGCTGCTGCAGGCAGTTGCACTGGGACTGCTGGTGGCCAGCAGCTTGTGCTGCTGCCAGC  
GCTGGTGTGTGGGGCCTTCAGGGCAGCTGCAGCCTGCTGGGGCCGCTACTTCTGCTTCAGCTCGCTC  
AGCACCATTGGCCTGGAGGACTTGTGCCCGCCGCGGCCGAGCCTGCACCCGTGATTTACCACCTGG  
GCCAGCTCGCACTTCTTGTTACTTGCTTCTAGGACTCTGGCCATGCTGCTGGCAGTGGAGACCTTCTC  
TGAGCTGCCGAGGTCCTGCCATGGGGAAGTTCTTCAGACCCAGTGGTCTGTGACTGCTGAGGACCAA  
GGTGGCATCCTAGGGCAGGATGAACTGGCTCTGAGCACCTGCCGCCGCGGCCCCAGCTTCAGGACAAG  
CCCTGCTTGC

**ACGCGT**ACGCGGCCGCTCGAGCAGAAACTCATCTCAGAAGAGGATCTGGCAGCAAATGATATCCTGGATT  
ACAAGGATGACGACGATAAGGTTTAA



[View online »](#)

**Protein Sequence:** >RC218633 representing NM\_033347  
Red=Cloning site Green=Tags(s)

MGGLRPWSRYGLLVVAHLLALGLGAVVFQALEGPPACRLQAE LRAELAAFQAEHRACLPPGAL EELLGTA  
 LATQAHGVSTLGNSSSEGR TWDLP SALLFAASIL TTTGYGHMAPLSPGGKAF CMVYAALGLPASLALVATL  
 RHCLLPVLSRPRAWVAVHWQLSPARAALLQAVALLG LLLVASSFVLLPALVLWGLQGD C SLLGAVYFCFSSL  
 STIGLEDLLPGRGRSLHPVIYHLGQLALLGYLL LGLLAMLLAVETF SELPQVRAMGKFFRPSGPVTAEDQ  
 GGILGQDELALSTLPPAAPASGQAPAC

TRTRPLEQKLISEEDLAANDILDYKDDDDKV

**Chromatograms:** [https://cdn.origene.com/chromatograms/mk6489\\_h04.zip](https://cdn.origene.com/chromatograms/mk6489_h04.zip)

**Restriction Sites:** SgfI-MluI

**Cloning Scheme:**

Cloning sites used for ORF Shuttling:



\* The last codon before the Stop codon of the ORF

**ACCN:** NM\_033347

**ORF Size:** 921 bp

**OTI Disclaimer:** The molecular sequence of this clone aligns with the gene accession number as a point of reference only. However, individual transcript sequences of the same gene can differ through naturally occurring variations (e.g. polymorphisms), each with its own valid existence. This clone is substantially in agreement with the reference, but a complete review of all prevailing variants is recommended prior to use. [More info](#)

**OTI Annotation:** This clone was engineered to express the complete ORF with an expression tag. Expression varies depending on the nature of the gene.

**Components:** The ORF clone is ion-exchange column purified and shipped in a 2D barcoded Matrix tube containing 10ug of transfection-ready, dried plasmid DNA (reconstitute with 100 ul of water).

**Reconstitution Method:**

1. Centrifuge at 5,000xg for 5min.
2. Carefully open the tube and add 100ul of sterile water to dissolve the DNA.
3. Close the tube and incubate for 10 minutes at room temperature.
4. Briefly vortex the tube and then do a quick spin (less than 5000xg) to concentrate the liquid at the bottom.
5. Store the suspended plasmid at -20°C. The DNA is stable for at least one year from date of shipping when stored at -20°C.

**RefSeq:** [NM\\_033347.2](#)

**RefSeq Size:** 1312 bp

**RefSeq ORF:** 924 bp

**Locus ID:** 10089

**UniProt ID:** [Q9Y2U2](#)

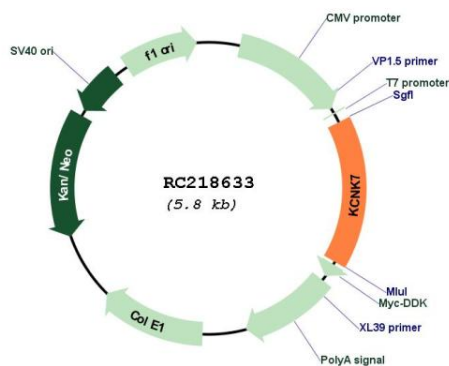
**Cytogenetics:** 11q13.1

**Protein Families:** Druggable Genome, Ion Channels: Potassium, Transmembrane

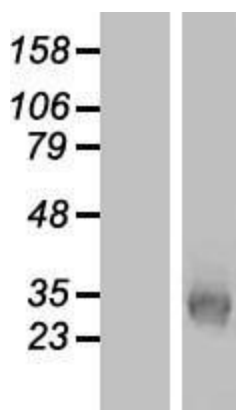
**MW:** 31.8 kDa

**Gene Summary:** This gene encodes a member of the superfamily of potassium channel proteins containing two pore-forming P domains. The product of this gene has not been shown to be a functional channel; however, it may require other non-pore-forming proteins for activity. Multiple transcript variants encoding different isoforms have been found for this gene. [provided by RefSeq, Jul 2008]

### Product images:



Circular map for RC218633



Western blot validation of overexpression lysate (Cat# [LY409584]) using anti-DDK antibody (Cat# [TA50011-100]). Left: Cell lysates from untransfected HEK293T cells; Right: Cell lysates from HEK293T cells transfected with RC218633 using transfection reagent MegaTran 2.0 (Cat# [TT210002]).