

Product datasheet for **RC218615**

IQCE (NM_001100390) Human Tagged ORF Clone

Product data:

Product Type:	Expression Plasmids
Product Name:	IQCE (NM_001100390) Human Tagged ORF Clone
Tag:	Myc-DDK
Symbol:	IQCE
Synonyms:	1700028P05Rik
Mammalian Cell Selection:	Neomycin
Vector:	pCMV6-Entry (PS100001)
E. coli Selection:	Kanamycin (25 ug/mL)



[View online »](#)

ORF Nucleotide Sequence:

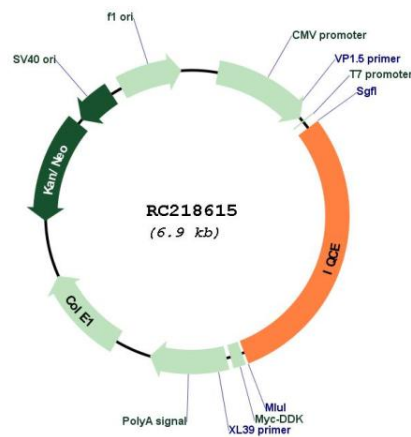
>RC218615 representing NM_001100390
 Red=Cloning site Blue=ORF Green=Tags(s)

TTTTGTAATACGACTCACTATAGGGCGGCCGGGAATTCGTCGACTGGATCCGGTACCGAGGAGATCTGCC
 GCC**CGGATCGCC**

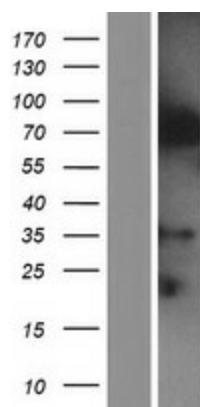
ATGTTCTGGGCACCGGGGAGCCGGCCTTGGACACGAAAGCAAAAAGGAAAGCTTCCACAAACCTCCAC
 CCACATCGCCAAAGTCACCTTATCTCTAAGCCGAGAAAAGTGGCCTCCTGGAGGTCCCTCAGGACGGC
 AGGGAGCATGCCTCTGGCGGCCGAGCGTCCCTGACCCCGCAGAAGCTGTGGCTGGGAACCGCAAAGCCA
 GGAAGTCTGACCCAGGCCCTGAACTCACCCCTCACCTGGGAGCATGCGTGGACTGGCGTCCCGGCGGCA
 CTCCTGACTGTCTGACAGACACCTTACAGTGAAGAGGCCACATCTCAGGCGCTCTGCCAGCAACGGTCA
 TGTCCCTGGGACTCCTGTCTACAGAGAAAAGAAGATATGTATGACGAGATTATTGAGTTAAGAAGTCA
 TTGCACGTGCAGAAGAGCGACGTGGACCTGATGAGAACGAAGCTCCGGCGCCTGGAGGAGAAAACAGCA
 GGAAGGACCGGCAGATAGAGCAGCTCCTGGATCCAGCCGCGGCACGGATTTTGTTCGGACTCTGGCAGA
 GAAAAGGCCCGATGCCAGTTGGGTCAATTAACGGGCTGAAGCAGAGGATCCTGAAGCTGGAACAGCAGTGC
 AAGGAGAAGGACGGCACCATCAGCAAATCCAGACCGATATGAAGACTACCAACCTGGAAGAGATGCCGA
 TCGCCATGGAGACATACTACGAGGAGGTGCATCGTCTCCAGACCTCTTGGAAGTTCTGAAACCCCGG
 AAAGAAGCCCCTGGGGAGAAGAAGACGGGCGCCAAAAGGCAGAAGAAGATGGGCAGTGCCTCCTGAGC
 TTGTCCCGAGGTGTCAGGAGCTCACGGAAGAGAACCAGAGCCTGAAGGAGGACCTGGACCCGCTGCTGA
 GCACCTCCCCAACCATCTCCAAGACACAGGGTTATGTGGAGTGGAGCAAGCCCGGCTGTGAGGCGCAT
 TGTGGAGCTGGAGAAGAACTAAGTGTGATGGAGAGCTCAAAATCACACGCCGACAGCCAGTGCAGATCA
 CACCCGCCAGCCTGCCTTGATCCAGCTCTGCGCTGCACAGACAGCCACGAGGGGACCGCAACAAGGACC
 ACGAGCGTCTCCGAGGGGCTGTGAGAGACCTGAAGGAAGAGCGGACCGCGCTGCAGGAGCAGTCTGTCA
 GAGAGATTTGGAGGTGAAGCAGCTCCTGCAGGCGAAGGCCGACCTGGAGAAGGAGCTGGAGTGCAGGAGG
 GAGGGCGAGGAGGAGGAGAGAGCGAGAGGAGGTTTTGAGAGAGGAGATTACAGACACTACCAGCAAGC
 TCCAAGAATTGCAAGAAATGAAGAAAGAAGAGAAAGAGGATTGCCCGGAAGTTCTCATAAGGCCAAGA
 GCTCCAGCTCCCACTCCAGCAGCAGGCACTGCGAGCAAGACTGGCCGCGGATTCCAGCGAGGAGGGG
 CTCCCGCGGCCCGCTCCCTGCTCTGATGGGAGAAGAGACGCCGCGGCCAGAGTCTGCAGGCCAGT
 GGAAGGTGTACAAGCACAAGAAAAAAGGCTGTTCTGGATGAGGCGGCTGTGGTCTTCAGGCAGCTTT
 CAGGGGACATCTACGCGGACAAAGCTCTTAGCAAGCAAAGCACATGGCTCAGAGCCACCCAGCGTGCCA
 GGCTCCAGACCAGAGCTCTCCTGTGCCCGCGTTCCGAGCCCATCGCCAGGCCACGGGCAGCCCTG
 TGCAGGAGGAGGCCATCGTCATCATCCAGTCCGCTCTGCGGGCACACCTGGCCCGGGCCAGGCACAGTGC
 TACCGGTAAAAGAACCACCACCGCAGCTTCTACCAGGAGGAGATCGGCTTCAGCCACACACGGGGACGCC
 TCTCCCAACCTTCTCGCAGCTTCTCTGACCCCTCTCCCTCAGGGCCACAGGCTTGGCACCTCTAC
 CTGGGGATGACGTCAACTCCGATGATTCCGACGATATTGTATTGACCCGTCTCTGCCACGAAGAATT
 TCCAGTT

ACGCGTACGCGGGCGCTCGAGCAGAACTCATCTCAGAAGAGGATCTGGCAGCAATGATATCCTGGATT
 ACAAGGATGACGACGATAAGGTTTAA

Components:	The ORF clone is ion-exchange column purified and shipped in a 2D barcoded Matrix tube containing 10ug of transfection-ready, dried plasmid DNA (reconstitute with 100 ul of water).
Reconstitution Method:	<ol style="list-style-type: none"> 1. Centrifuge at 5,000xg for 5min. 2. Carefully open the tube and add 100ul of sterile water to dissolve the DNA. 3. Close the tube and incubate for 10 minutes at room temperature. 4. Briefly vortex the tube and then do a quick spin (less than 5000xg) to concentrate the liquid at the bottom. 5. Store the suspended plasmid at -20°C. The DNA is stable for at least one year from date of shipping when stored at -20°C.
RefSeq:	<u>NM_001100390.1, NP_001093860.1</u>
RefSeq Size:	6813 bp
RefSeq ORF:	2039 bp
Locus ID:	23288
Cytogenetics:	7p22.3
MW:	75.5 kDa
Gene Summary:	Component of the EvC complex that positively regulates ciliary Hedgehog (Hh) signaling (By similarity). Required for proper limb morphogenesis (PubMed:28488682).[UniProtKB/Swiss-Prot Function]

Product images:


Circular map for RC218615



Western blot validation of overexpression lysate (Cat# [LY420242]) using anti-DDK antibody (Cat# [TA50011-100]). Left: Cell lysates from untransfected HEK293T cells; Right: Cell lysates from HEK293T cells transfected with RC218615 using transfection reagent MegaTran 2.0 (Cat# [TT210002]).