

Product datasheet for RC218612

ELAVL4 (NM_021952) Human Tagged ORF Clone

Product data:

Product Type: Expression Plasmids
Product Name: ELAVL4 (NM_021952) Human Tagged ORF Clone
Tag: Myc-DDK
Symbol: ELAVL4
Synonyms: HUD; PNEM
Mammalian Cell Selection: Neomycin
Vector: pCMV6-Entry (PS100001)
E. coli Selection: Kanamycin (25 ug/mL)
ORF Nucleotide Sequence: >RC218612 representing NM_021952
 Red=Cloning site Blue=ORF Green=Tags(s)

TTTTGTAATACGACTCACTATAGGGCGGCCGGAATTCGTCGACTGGATCCGGTACCGAGGAGATCTGCC
 GCC**CGATCGCC**

ATGGTTATGATAATTAGCACCATGGAGCCTCAGGTGTCAAATGGTCCGACATCCAATACAAGCAATGGAC
 CCTCCAGCAACAACAGAACTGTCCTTCTCCCATGCAAACAGGGGCAACACAGATGACAGCAAAACCAA
 CCTCATCGTCAACTATTTACCCAGAATATGACCCAAGAAGAATTCAGGAGTCTCTTCGGGAGCATTGGT
 GAAATAGAATCCTGCAAACCTGTGAGAGACAAAATTACAGGACAGAGTTTAGGGTATGGATTGTTAACT
 ATATTGATCCAAAGGATGCAGAGAAAGCCATCAACACTTTAAATGGACTCAGACTCCAGACCAAAACCAT
 AAAGGTCTCATATGCCCGTCCGAGCTCTGCCTCAATCAGGGATGCTAACCTCTATGTTAGCGGCCTTCCC
 AAAACCATGACCCAGAAGGAACTGGAGCAACTTTCTCGCAATACGGCCGTATCATCACCTCACGAATCC
 TGGTTGATCAAGTACAGGAGTGTCCAGAGGGGTGGGATTCATCCGCTTTGATAAGAGGATTGAGGCAGA
 AGAAGCCATCAAAGGGCTGAATGGCCAGAAGCCAGCGGTGCTACGGAACCGATTACTGTGAAGTTTGCC
 AACAACCCAGCCAGAAGTCCAGCCAGGCCCTGCTCTCCAGCTCTACCAGTCCCCTAACCGGCCCTACC
 CAGGTCCACTTCACCACCAGGCTCAGAGGTTCAGGCTGGACAATTTGCTTAATATGGCCTATGGCGTAAA
 GAGACTGATGTCTGGACCAGTCCCCCTTCTGCTTGTTCCTCCAGGTTCTCCCAATTACCATTGATGGA
 ATGACAAGCCTTGTGGGAATGAACATCCCTGGTCACACAGGAAGTGGGTGGTGCATCTTTGTCTACAAC
 TGTCTCCGATTCGATGAGAGTGTCTCTGGCAGCTCTTTGGCCCTTTGGAGCAGTGAACAACGTAAA
 GGTGATTCGTGACTTCAACACCAACAAGTGAAGGGATTTCGGCTTTGTACCATGACCAACTATGATGAG
 GCGGCCATGGCCATCGCCAGCCTCAACGGGTACCGCCTGGGAGACAGAGTGTGCAAGTTTCCTTTAAAA
 CCAACAAAGCCACAAGTCC

ACGCGTACGCGGCCGCTCGAGCAGAAACTCATCTCAGAAGAGGATCTGGCAGCAATGATATCCTGGATT
 ACAAGGATGACGACGATAAGGTTTAA



[View online »](#)

Protein Sequence: >RC218612 representing NM_021952
Red=Cloning site Green=Tags(s)

MVMIISTMEPQVSNQPTSNTSNGPSSNNRNCPSMQTGATDDSKTNLIVNYLPQNMTQEEFRSLFGSIG
 EIESCKLVRDKITGQSLGYGFVNYIDPKDAEKAINTLNGRLQTKTIKVSYARPSSASIRDANLYVGLP
 KTMTQKELEQLFSQYGRITTSRILVDQVTGVSRGVGFIRFDKRIEAEAEAIKGLNGQKPSGATEPITVKFA
 NNPSQKSSQALLSQLYQSPNRRYPGPLHHQAQRFRLDNLLNMAYGVKRLMSGPVPSPSACSPRFSPTIDG
 MTSLVGMNIPGHTGTWCIFVYNLSPDSDESVLWQLFGPFGAVNNVKVIRDFNTNKCKGFGVMTNYDE
 AAMAIASLNGYRLGDRVLQVSFKTNKAHKS

TRTRPLEQKLISEEDLAANDILDYKDDDDKV

Chromatograms: https://cdn.origene.com/chromatograms/mk6505_a12.zip

Restriction Sites: SgfI-MluI

Cloning Scheme:



ACCN: NM_021952

ORF Size: 1140 bp

OTI Disclaimer: The molecular sequence of this clone aligns with the gene accession number as a point of reference only. However, individual transcript sequences of the same gene can differ through naturally occurring variations (e.g. polymorphisms), each with its own valid existence. This clone is substantially in agreement with the reference, but a complete review of all prevailing variants is recommended prior to use. [More info](#)

OTI Annotation: This clone was engineered to express the complete ORF with an expression tag. Expression varies depending on the nature of the gene.

Components: The ORF clone is ion-exchange column purified and shipped in a 2D barcoded Matrix tube containing 10ug of transfection-ready, dried plasmid DNA (reconstitute with 100 ul of water).

Reconstitution Method:

1. Centrifuge at 5,000xg for 5min.
2. Carefully open the tube and add 100ul of sterile water to dissolve the DNA.
3. Close the tube and incubate for 10 minutes at room temperature.
4. Briefly vortex the tube and then do a quick spin (less than 5000xg) to concentrate the liquid at the bottom.
5. Store the suspended plasmid at -20°C. The DNA is stable for at least one year from date of shipping when stored at -20°C.

Note: Plasmids are not sterile. For experiments where strict sterility is required, filtration with 0.22um filter is required.

RefSeq: [NM_021952.5](#)

RefSeq Size: 1591 bp

RefSeq ORF: 1143 bp

Locus ID: 1996

UniProt ID: [P26378](#)

Cytogenetics: 1p33-p32.3

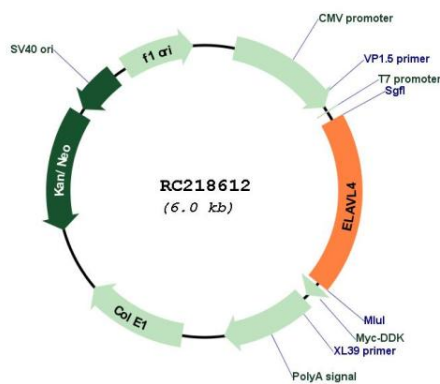
Domains: RRM

Protein Families: Druggable Genome

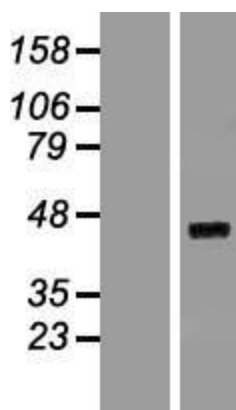
MW: 41.6 kDa

Gene Summary: May play a role in neuron-specific RNA processing. Protects CDKN1A mRNA from decay by binding to its 3' UTR (By similarity). Binds to AU-rich sequences (AREs) of target mRNAs, including VEGF and FOS mRNA.[UniProtKB/Swiss-Prot Function]

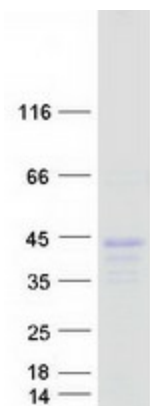
Product images:



Circular map for RC218612



Western blot validation of overexpression lysate (Cat# [LY411863]) using anti-DDK antibody (Cat# [TA50011-100]). Left: Cell lysates from untransfected HEK293T cells; Right: Cell lysates from HEK293T cells transfected with RC218612 using transfection reagent MegaTran 2.0 (Cat# [TT210002]).



Coomassie blue staining of purified ELAVL4 protein (Cat# [TP318612]). The protein was produced from HEK293T cells transfected with ELAVL4 cDNA clone (Cat# RC218612) using MegaTran 2.0 (Cat# [TT210002]).