

## Product datasheet for RC218606

### Asialoglycoprotein Receptor 2 (ASGR2) (NM\_080912) Human Tagged ORF Clone

#### Product data:

Product Type:	Expression Plasmids
Product Name:	Asialoglycoprotein Receptor 2 (ASGR2) (NM_080912) Human Tagged ORF Clone
Tag:	Myc-DDK
Symbol:	Asialoglycoprotein Receptor 2
Synonyms:	ASGP-R2; ASGPR2; CLEC4H2; HBXBP; HL-2
Mammalian Cell Selection:	Neomycin
Vector:	pCMV6-Entry (PS100001)
E. coli Selection:	Kanamycin (25 ug/mL)
ORF Nucleotide Sequence:	>RC218606 representing NM_080912 Red=Cloning site Blue=ORF Green=Tags(s)

TTTTGTAATACGACTCACTATAGGGCGCCGGGAATTCGTCGACTGGATCCGGTACCGAGGAGATCTGCC  
GCC**CGATCGCC**

ATGGCCAAGGACTTTCAAGATATCCAGCAGCTGAGCTCGGAGGAAAATGACCATCCTTTCCATCAAGGTG  
AGGGGCCAGGCACTCGCAGGCTGAATCCCAGGAGAGGAAATCCATTTTTGAAAGGGCCACCTCCTGCCCA  
GCCCTGGCACAGCGTCTCTGCTCCATGGTCTGCTTCAGTCTGCTTGCCCTGAGCTTCAACATCCTGCTG  
CTGGTGGTCATCTGTGTGACTGGGTCCCAAAGTGAGGGTCACAGAGGTGCACAGCTGCAAGCCGAGCTGC  
GGAGCCTGAAGGAAGCTTTCAGCAACTTCTCCTCGAGCACCTGACGGAGGTCCAGGCAATCAGCACCCA  
CGGAGGCAGCGTGGGTGACAAGATCACATCCCTAGGAGCCAAGCTGGAGAAACAGCAGCAGGACCTGAAA  
GCAGATCACGATGCCCTGCTCTTCCATCTGAAGCACTTCCCCGTGGACCTGCGCTTCGTGGCCTGCCAGA  
TGGAGCTCCTCCACAGCAACGGCTCCCAAAGGACCTGCTGCCCGTCAACTGGGTGGAGCACCAAGGCGAG  
CTGCTACTGGTCTCTCACTCCGGGAAGGCCTGGGCTGAGGCGGAGAAGTACTGCCAGCTGGAGAACGCA  
CACCTTGTGGTCATCAACTCCTGGGAGGAGCAGAAATTCATTGTACAACACACGAACCCCTTCAATACCT  
GGATAGGTCTCACGGACAGTGATGGCTCTTGAAAATGGGTGGATGGCACAGACTATAGGCACAACATAAA  
GAACTGGGCTGTCACTCAGCCAGATAATTGGCACGGGCACGAGCTGGGTGGAAGTGAAGACTGTGTTGAA  
GTCCAGCCGGATGGCCGCTGGAACGATGACTTCTGCCTGCAGGTGTACCGCTGGGTGTGTGAGAAAAGGC  
GGAATGCCACCGCGAGGTGGCC

**ACGCGT**ACGCGGCCGCTCGAGCAGAAACTCATCTCAGAAGAGGATCTGGCAGCAAATGATATCCTGGATT  
ACAAGGATGACGACGATAAGGTTTAA



[View online »](#)



**Reconstitution Method:**

1. Centrifuge at 5,000xg for 5min.
2. Carefully open the tube and add 100ul of sterile water to dissolve the DNA.
3. Close the tube and incubate for 10 minutes at room temperature.
4. Briefly vortex the tube and then do a quick spin (less than 5000xg) to concentrate the liquid at the bottom.
5. Store the suspended plasmid at -20°C. The DNA is stable for at least one year from date of shipping when stored at -20°C.

**RefSeq:** [NM\\_080912.3](#)

**RefSeq Size:** 1544 bp

**RefSeq ORF:** 936 bp

**Locus ID:** 433

**UniProt ID:** [P07307](#)

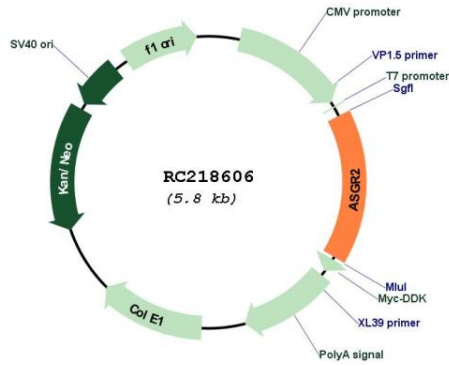
**Cytogenetics:** 17p13.1

**Protein Families:** Druggable Genome, Transmembrane

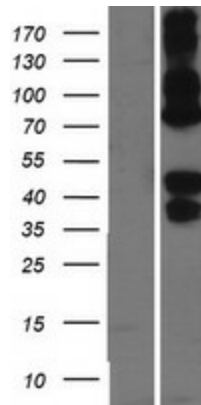
**MW:** 35.2 kDa

**Gene Summary:** This gene encodes a subunit of the asialoglycoprotein receptor. This receptor is a transmembrane protein that plays a critical role in serum glycoprotein homeostasis by mediating the endocytosis and lysosomal degradation of glycoproteins with exposed terminal galactose or N-acetylgalactosamine residues. The asialoglycoprotein receptor may facilitate hepatic infection by multiple viruses including hepatitis B, and is also a target for liver-specific drug delivery. The asialoglycoprotein receptor is a hetero-oligomeric protein composed of major and minor subunits, which are encoded by different genes. The protein encoded by this gene is the less abundant minor subunit. Alternatively spliced transcript variants encoding multiple isoforms have been observed for this gene. [provided by RefSeq, Jan 2011]

Product images:



Circular map for RC218606



Western blot validation of overexpression lysate (Cat# [LY408999]) using anti-DDK antibody (Cat# [TA50011-100]). Left: Cell lysates from untransfected HEK293T cells; Right: Cell lysates from HEK293T cells transfected with RC218606 using transfection reagent MegaTran 2.0 (Cat# [TT210002]).