

Product datasheet for **RC218598**

ENTPD8 (NM_001033113) Human Tagged ORF Clone

Product data:

Product Type:	Expression Plasmids
Product Name:	ENTPD8 (NM_001033113) Human Tagged ORF Clone
Tag:	Myc-DDK
Symbol:	ENTPD8
Synonyms:	E-NTPDase; GLSR2492; NTPDase-8; UNQ2492
Mammalian Cell Selection:	Neomycin
Vector:	pCMV6-Entry (PS100001)
E. coli Selection:	Kanamycin (25 ug/mL)



[View online »](#)

ORF Nucleotide Sequence:

>RC218598 representing NM_001033113
 Red=Cloning site Blue=ORF Green=Tags(s)

TTTTGTAATACGACTCACTATAGGGCGGCCGGGAATTCGTCGACTGGATCCGGTACCGAGGAGATCTGCC
 GCC**GCGATCGCC**

ATGGGGCTGTCCCGAAGGAGCAGGTCTTCTTGCCCTGCTGGGGCCTCGGGGTCTCAGGCCACCG
 CACTATTCTCCTCTGGTGGAGGCCACACGCTGCTCCTGCCACAGACATCAAGTTTGGGATCGTGTT
 TGATGCGGGCTCCTCCACACGTCCTTCTGTATCAGTGGCTGGCGAACAAGGAGAATGGCACGGGT
 GTGGTCAGCCAGGCCCTGGCTGCCAGGTGGAAGGGCCTGGAATCTCCTCTACACTTCTAATGCTGCAC
 AGGCTGGTGGAGCCTGCAGGGCTGCTTGGAGGAGGGCTGGTGTGATCCCAGAGGCCACGATCGGAA
 AACACCCACGTTCTGGGGCCACGGCTGGCATGAGGTTGCTCAGCCGGAAGAACAGCTCTCAGGCCAGG
 GACATCTTTGAGCAGTCACCCAGGTCTGGGCCGGTCTCCCGTGGACTTTGGGGTCCGAGCTCTGG
 CCGGCCAGGCCGAAGGTGCCTTTGGTTGGATCACTGTCAACTACGGCTTGGGGACGCTGGTCAAGTACTC
 TTCACTGGAGAATGGATCCAGCCTCCGAGGAGATGCTGGTGGTGCCCTGGACATGGGAGGGCCTCC
 ACCCAGATCACGTTCTGCTCCTGGGGCCCCATCTTGGACAAGAGCACCCAGGCCGATTTTCGCCTCTACG
 GCTCCGACTACAGCGTCTACACTCACAGCTACCTGTGCTTTGGACGGGACCAGATGCTGAGCAGGCTCCT
 CGTGGGGCTGGTACAGAGCCGCCGGCTGCCCTGCTCCGTCAACCGTGTACCTCAGCGGTACCCAGACC
 AACTGGCCCTGGGCCCGCTGTATGAGTCAACCTGTGTCCACGCCACGCCCCCGCTGAGCCTCCCCCAGA
 ACCTCACAGTTGAAGGGACAGGCAACCTGGAGCCTGCGTCTCAGCCATCCGGGAACCTTTCAACTTCTC
 CAGCTGCCAGGGCCAGGAGGACTGCGCCTTTGACGGGGTCTACCAGCCCCGCTGCGGGGCCAGTTCTAT
 GCCTTCTCAACTTCTACTACACCTTCCACTTCTGAACCTCACCTCCAGGCAGCCCTGAGCACGGTCA
 ACGCCACCATCTGGGAGTTTGGCAGAGGCCCTGGAACTGGTGGAGGCCAGTACCCTGGCAGGACCCG
 CTGGCTGCGGGACTACTGTGCCTCAGGCCTGTACATCCTCACCTCCTGCACGAGGGCTACGGGTTCAAGC
 GAGGAGACCTGGCCAGCCTCGAGTTCGAAAGCAGGCGGGCGGTGTGGACATTGGCTGGACACTGGGCT
 ACATGCTGAACCTGACCGGGATGATCCCGGCCGATGCGCCGGCTCAGTGGCGGGCAGAGAGCTACGGCGT
 CTGGGTGGCCAAAGTGGTGTTCATGGTGTGCCCTGGTGGCGGTGGTGGGGCTGCCTGGTCCAGCTC
 TTCTGGTTGCAGGAC

ACGCGTACGCGGCCGCTCGAGCAGAACTCATCTCAGAAGAGGATCTGGCAGCAAATGATATCCTGGATT
 ACAAGGATGACGACGATAAGGTTTAA

Protein Sequence:

>RC218598 representing NM_001033113
 Red=Cloning site Green=Tags(s)

MGLSRKEQVFLALLGASGVSLTALILLVVEATSLLPTDIKFGIVFDAGSSHTSLFLYQWLANKENGTG
 VVSQALACQVEGPGISSYTSNAAQAGESLQGCLEALVLIPEAQHRKTPFLGATAGMRLLSRKNSQAR
 DIFAAVTQVLGRSPVDFWGAELLAGQAEGAFGWITVNYLGLTLVKYSFTGEWIQPPPEEMLVGALDMGGAS
 TQITFVPGPILDKSTQADFRLYGSYSYTHSYLCFGRDQMLSRLLVGLVQSRPAALLRHPCYLSGYQT
 TLALGPLYESPCVHATPPLSLPQNLVEGTGNPGACVSAIRELFNFSSCQGQEDCAFQDGVYQPPLRGQFY
 AFSNFYYTFHFLNLSRQPLSTVNATIWEFCQRPWKLVEASYPGQDRWLRDYCASGLYIILTLHEGYGFS
 EETWPSLEFRKQAGGVDIGWTLGYMLNL TGMIPADAPAQWRAESYGVVWAKVVMVLALVAVVGAALVQL
 FWLQD

TRTRPLEQKLISEEDLAANDILDYKDDDDKV

Chromatograms:

https://cdn.origene.com/chromatograms/mk8021_e08.zip

Restriction Sites:

Sgfl-Mlul

Cloning Scheme:


ACCN: NM_001033113

ORF Size: 1485 bp

OTI Disclaimer: The molecular sequence of this clone aligns with the gene accession number as a point of reference only. However, individual transcript sequences of the same gene can differ through naturally occurring variations (e.g. polymorphisms), each with its own valid existence. This clone is substantially in agreement with the reference, but a complete review of all prevailing variants is recommended prior to use. [More info](#)

OTI Annotation: This clone was engineered to express the complete ORF with an expression tag. Expression varies depending on the nature of the gene.

Components: The ORF clone is ion-exchange column purified and shipped in a 2D barcoded Matrix tube containing 10ug of transfection-ready, dried plasmid DNA (reconstitute with 100 ul of water).

Reconstitution Method:

1. Centrifuge at 5,000xg for 5min.
2. Carefully open the tube and add 100ul of sterile water to dissolve the DNA.
3. Close the tube and incubate for 10 minutes at room temperature.
4. Briefly vortex the tube and then do a quick spin (less than 5000xg) to concentrate the liquid at the bottom.
5. Store the suspended plasmid at -20°C. The DNA is stable for at least one year from date of shipping when stored at -20°C.

RefSeq: [NM_001033113.2](#)

RefSeq Size: 2222 bp

RefSeq ORF: 1488 bp

Locus ID: 377841

UniProt ID: [Q5MY95](#)

Cytogenetics: 9q34.3

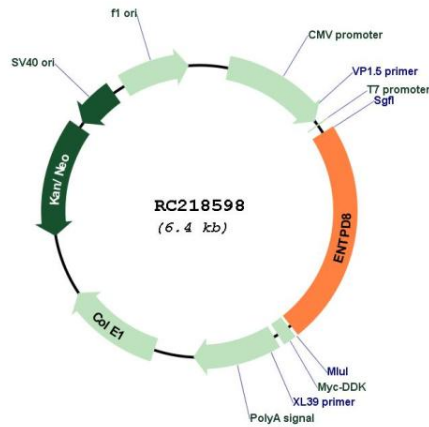
Protein Families: Transmembrane

Protein Pathways: Purine metabolism, Pyrimidine metabolism

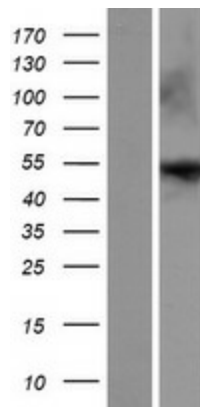
MW: 53.7 kDa

Gene Summary: Canalicular ectonucleoside NTPDase responsible for the main hepatic NTPDase activity. Ectonucleoside NTPDases catalyze the hydrolysis of gamma- and beta-phosphate residues of nucleotides, playing a central role in concentration of extracellular nucleotides. Has activity toward ATP, ADP, UTP and UDP, but not toward AMP.[UniProtKB/Swiss-Prot Function]

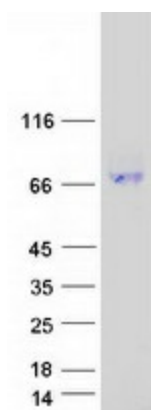
Product images:



Circular map for RC218598



Western blot validation of overexpression lysate (Cat# [LY422368]) using anti-DDK antibody (Cat# [TA50011-100]). Left: Cell lysates from untransfected HEK293T cells; Right: Cell lysates from HEK293T cells transfected with RC218598 using transfection reagent MegaTran 2.0 (Cat# [TT210002]).



Coomassie blue staining of purified ENTPD8 protein (Cat# [TP318598]). The protein was produced from HEK293T cells transfected with ENTPD8 cDNA clone (Cat# RC218598) using MegaTran 2.0 (Cat# [TT210002]).