

Product datasheet for **RC218593**

MARCHF2 (NM_001005415) Human Tagged ORF Clone

Product data:

Product Type: Expression Plasmids
Product Name: MARCHF2 (NM_001005415) Human Tagged ORF Clone
Tag: Myc-DDK
Symbol: MARCHF2
Synonyms: HSPC240; MARCH-II; MARCH2; RNF172
Mammalian Cell Selection: Neomycin
Vector: pCMV6-Entry (PS100001)
E. coli Selection: Kanamycin (25 ug/mL)
ORF Nucleotide Sequence: >RC218593 representing NM_001005415
Red=Cloning site Blue=ORF Green=Tags(s)

TTTTGTAATACGACTCACTATAGGGCGCCGGGAATTCGTCGACTGGATCCGGTACCGAGGAGATCTGCC
GCC**CGATCGCC**

ATGACGACGGGTGACTGCTGCCACCTCCCCGGCTCCCTGTGTGACTGCTCCGGCAGCCCTGCCTTCTCCA
AGGTCGTGGAGGCTACGGGCCTCGGACCGCCCCAGTATGTGGCACAGGTGACTTCAAGGGATGGCCGGCT
CCTCTCCACCGTCATCCGTACCTTGGACACACCGAGTGATGGTCCTTTCTGCCGGATCTGCCATGAGGGA
GCGAACGGGGAGTGTCTGTCCCGTGTGGCTGCACCGGCACGCTGGGTGCCGTGCATAAGAGCTGTC
TGGAGAAGTGGCTTTCCTCATCTAACACCAGCTACTGCGAGCTGTCCACACGGAGTTTGCAGTGGAGAA
ACGGCCTCGACCCCTCACAGAGTGGCTGAAGGACCCGGGGCCCGGACGGAAGCGGACACTGTGCTGC
GACATGGTGTGTTTCTGTTTCATCACACCGCTGGCCGCCATCTCAGGCTGGTTGTGCCTGCGCGGGGCC
AGGACCACCTCCGGCTCCACAGCCAGCTGGAGGCCGTGGGTCTCATTGCCCTCACCATCGCCCTTCTCAC
CATCTATGTCTCTGGACGCTGGTCTCCTTCCGCTACCACTGCCAGCTGTACTCCGAGTGGAGAAAGACC
AACCAGAAAGTTCGCCTGAAGATCCGGGAGGCGGACAGCCCCGAGGGCCCCCAGCATTCTCCACTGGCAG
CTGGACTCCTGAAGAAGGTGGCAGAGGAGACACCACTA

ACGCGTACGCGGCCGCTCGAGCAGAACTCATCTCAGAAGAGGATCTGGCAGCAAATGATATCTGGATT
ACAAGGATGACGACGATAAGGTTTAA



[View online »](#)

Protein Sequence: >RC218593 representing NM_001005415
 Red=Cloning site Green=Tags(s)

MTTGDCCHLPGSLCDCSGSPAFSKVVEATGLGPPQYVAQVTSRDGRLSTVIRTLDTSPDGPFCRICHEG
 ANGECLLSPCGCTGTLGAVHKSCLEKWLSSSNTSYCELCHTEFAVEKRPRPLTEWLKDPGRPRTEKRTLCC
 DMVCFLEITPLAAISGWLCLRGAQDHLRLHSQLEAVGLIALTIALFTIYVLWTLVSFRYHCQLYSEWRKT
 NQKVRLKIREADSPGPHSPLAAGLLKKVAEETPV

TRTRPLEQKLISEEDLAANDILDYKDDDDKV

Chromatograms: https://cdn.origene.com/chromatograms/mg2875_e06.zip

Restriction Sites: SgfI-MluI

Cloning Scheme:

Cloning sites used for ORF Shuttling:



* The last codon before the Stop codon of the ORF

ACCN: NM_001005415

ORF Size: 738 bp

OTI Disclaimer: The molecular sequence of this clone aligns with the gene accession number as a point of reference only. However, individual transcript sequences of the same gene can differ through naturally occurring variations (e.g. polymorphisms), each with its own valid existence. This clone is substantially in agreement with the reference, but a complete review of all prevailing variants is recommended prior to use. [More info](#)

OTI Annotation: This clone was engineered to express the complete ORF with an expression tag. Expression varies depending on the nature of the gene.

Components: The ORF clone is ion-exchange column purified and shipped in a 2D barcoded Matrix tube containing 10ug of transfection-ready, dried plasmid DNA (reconstitute with 100 ul of water).

Reconstitution Method:

1. Centrifuge at 5,000xg for 5min.
2. Carefully open the tube and add 100ul of sterile water to dissolve the DNA.
3. Close the tube and incubate for 10 minutes at room temperature.
4. Briefly vortex the tube and then do a quick spin (less than 5000xg) to concentrate the liquid at the bottom.
5. Store the suspended plasmid at -20°C. The DNA is stable for at least one year from date of shipping when stored at -20°C.

RefSeq: [NM_001005415.1](#), [NP_001005415.1](#)

RefSeq Size: 1434 bp

RefSeq ORF: 741 bp

Locus ID: 51257

UniProt ID: [Q9P0N8](#)

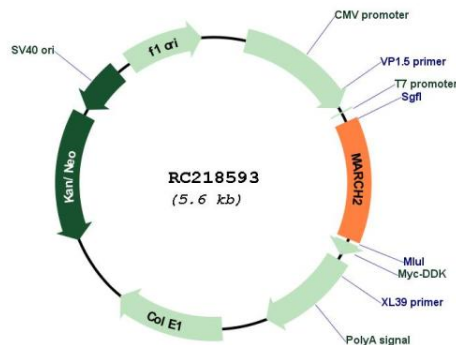
Cytogenetics: 19p13.2

Protein Families: Druggable Genome, Transmembrane

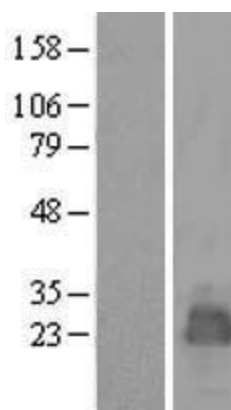
MW: 26.8 kDa

Gene Summary: MARCH2 is a member of the MARCH family of membrane-bound E3 ubiquitin ligases (EC 6.3.2.19). MARCH enzymes add ubiquitin (see MIM 191339) to target lysines in substrate proteins, thereby signaling their vesicular transport between membrane compartments. MARCH2 reduces surface accumulation of several glycoproteins and appears to regulate early endosome-to-trans-Golgi network (TGN) trafficking (Bartee et al., 2004 [PubMed 14722266]; Nakamura et al., 2005 [PubMed 15689499]).[supplied by OMIM, Mar 2010]

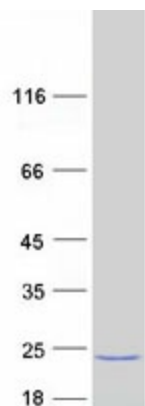
Product images:



Circular map for RC218593



Western blot validation of overexpression lysate (Cat# [LY423720]) using anti-DDK antibody (Cat# [TA50011-100]). Left: Cell lysates from untransfected HEK293T cells; Right: Cell lysates from HEK293T cells transfected with RC218593 using transfection reagent MegaTran 2.0 (Cat# [TT210002]).



Coomassie blue staining of purified MARCH2 protein (Cat# [TP318593]). The protein was produced from HEK293T cells transfected with MARCH2 cDNA clone (Cat# RC218593) using MegaTran 2.0 (Cat# [TT210002]).