

## Product datasheet for **RC218590**

### PRMT2 (NM\_001535) Human Tagged ORF Clone

#### Product data:

Product Type:	Expression Plasmids
Product Name:	PRMT2 (NM_001535) Human Tagged ORF Clone
Tag:	Myc-DDK
Symbol:	PRMT2
Synonyms:	HRMT1L1
Mammalian Cell Selection:	Neomycin
Vector:	pCMV6-Entry (PS100001)
E. coli Selection:	Kanamycin (25 ug/mL)



[View online »](#)

ORF Nucleotide  
Sequence:

>RC218590 representing NM\_001535  
Red=Cloning site Blue=ORF Green=Tags(s)

TTTTGTAATACGACTCACTATAGGGCGGCCGGGAATTCGTCGACTGGATCCGGTACCGAGGAGATCTGCC  
GCCCGCATCGCC

ATGGCAACATCAGGTGACTGTCCCAGAAGTGAATCGCAGGGAGAAGAGCCTGCTGAGTGCAGTGAGGCCG  
GTCTCCTGCAGGAGGGAGTACAGCCAGAGGAGTTTGTGGCCATCGCGACTACGCTGCCACCGATGAGAC  
CCAGCTCAGTTTTTTGAGAGGAGAAAAAATTTCTATCCTGAGACAAACCACTGCAGATTGGTGGTGGGT  
GAGCGTGCGGGCTGCTGTGGGTACATTCGGCAAACCATGTGGGAAGCACGTGGATGAGTACGACCCCG  
AGGACACGTGGCAGGATGAAGAGTACTTCGGCAGCTATGGAACCTCTGAACTCCACTTGGAGATGTTGGC  
AGACCAGCCAGAACTAAATACCACAGTGTTCATCCTGCAGAATAAAGAATCCCTGACGGATAAAGTC  
ATCCTGGACGTGGGCTGTGGGACTGGGATCATCAGTCTCTTCTGTGCACACTATGCGCGGCCCTAGAGCGG  
TGACCGGTGGAGGCCAGTGGATGGCACAGCACACGGGGCAGCTGGTCTGCAGAACGGCTTTGCTGA  
CATCATACCGTGTACCAGCAGAAGGTGGAGGATGTGGTCTGCCGAGAAGGTGGACGTCTGGTGTCT  
GAGTGGATGGGGACCTGCCTGCTGTTTGTAGTTCATGATCGAGTCCATCCTGTATGCCCGGATGCCTGGC  
TGAAGGAGGACGGGGTCAATTTGGCCACCATGGCTGCGTTGCACCTTGTGCCCTGCAGTGCCTGATAGGA  
TTATCGTAGCAAGGTGCTCTTCTGGGACAACGCGTACGAGTTCAACCTCAGCGCTCTGAAATCTTTAGCA  
GTTAAGGAGTTTTTTTCAAAGCCCAAGTATAACCACATTTTGAACCAGAAGACTGTCTCTCTGAACCGT  
GCACTATATTGCAGTTGGACATGAGAACCGTGCAAATTTCTGATCTAGAGACCCTGAGGGGCGAGCTGCG  
CTTCGACATCAGGAAGGCGGGGACCCTGCACGGCTTACGGCCTGGTTTAGCGTCCACTTCCAGAGCCTG  
CAGGAGGGGACGCGCCGAGGTGCTCAGCACCAGGGCCCTCCACCCACCACACACTGGAAGCAGACGC  
TGTTTCATGATGGACGCCAGTCCCTGTCCATACAGGAGACGTGGTACGGGTTTCAGTTGTTGCAGAG  
AAACCCAGTGTGAGAAGGCACATGTCTGTGGCTCTGAGCTGGGCTGTCACTTCCAGACAAGACCCACACA  
TCTCAAAAAGTTGGAGAAAAAGTCTTCCCCTCTGGAGA

AGCGGACCGACGCGTACGCGGCCGCTCGAGCAGAACTCATCTCAGAAGAGGATCTGGCAGCAAATGATATCC  
TGGATTACAAGGATGACGACGATAAGGTTTAA

## Protein Sequence:

>RC218590 representing NM\_001535  
Red=Cloning site Green=Tags(s)

MATSGDCPRSESQGEPAECSEAGLLQEGVQPEEFVAIADYAATDETQLSFLRGEKILILRQTTADWWWG  
ERAGCCGYIPANHVGHVDEYDPEDTWQDEEYFGSYGTLKLHLEMLADQPRTTYHSVILQNKESLTDKV  
ILDVGGGTGIIISLFAHYARPRVYAVEASEMAQHTGQLVLQNGFADIIIVYQKVEDVVLPEKVDVLS  
EWMGTCLLFEFMIESILYARDAWLKEDGVIWPTMAALHLVPCSADKDYRSKVLFDNAYEFNLSALKSLA  
VKEFFSKPKYNHILKPEDCLSEPCTILQLDMRTVQISDLETLRGELRFDIRKAGTLHGFTAWFSVHFQSL  
QEGQPPQVLSGPFHPTTHWKQTLFMMDDPVPVHTGDVVTGSVVLQRNPVWRRHMSVALSWAVTSRQDPT  
SQKVGEKVPFIWR

SGPTRRRLKQLISEEDLAANDILDYKDDDDKV

## Chromatograms:

[https://cdn.origene.com/chromatograms/mk6190\\_b09.zip](https://cdn.origene.com/chromatograms/mk6190_b09.zip)

## Restriction Sites:

Sgfl-RsrII

**Cloning Scheme:**


**ACCN:** NM\_001535

**ORF Size:** 1299 bp

**OTI Disclaimer:** The molecular sequence of this clone aligns with the gene accession number as a point of reference only. However, individual transcript sequences of the same gene can differ through naturally occurring variations (e.g. polymorphisms), each with its own valid existence. This clone is substantially in agreement with the reference, but a complete review of all prevailing variants is recommended prior to use. [More info](#)

**OTI Annotation:** This clone was engineered to express the complete ORF with an expression tag. Expression varies depending on the nature of the gene.

**Components:** The ORF clone is ion-exchange column purified and shipped in a 2D barcoded Matrix tube containing 10ug of transfection-ready, dried plasmid DNA (reconstitute with 100 ul of water).

**Reconstitution Method:**

1. Centrifuge at 5,000xg for 5min.
2. Carefully open the tube and add 100ul of sterile water to dissolve the DNA.
3. Close the tube and incubate for 10 minutes at room temperature.
4. Briefly vortex the tube and then do a quick spin (less than 5000xg) to concentrate the liquid at the bottom.
5. Store the suspended plasmid at -20°C. The DNA is stable for at least one year from date of shipping when stored at -20°C.

**RefSeq:** [NM\\_001535.4](#)

**RefSeq Size:** 2140 bp

**RefSeq ORF:** 1302 bp

**Locus ID:** 3275

**UniProt ID:** [P55345](#)

**Cytogenetics:** 21q22.3

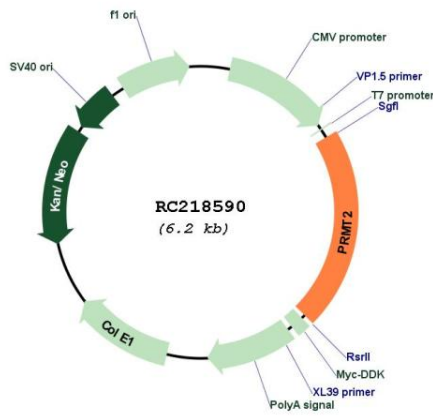
**Domains:** SH3

**Protein Families:** Druggable Genome

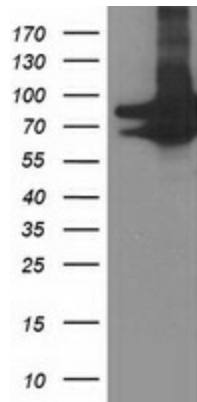
**MW:** 48.9 kDa

**Gene Summary:** Arginine methyltransferase that methylates the guanidino nitrogens of arginyl residues in proteins such as STAT3, FBL, histone H4. Acts as a coactivator (with NCOA2) of the androgen receptor (AR)-mediated transactivation. Acts as a coactivator (with estrogen) of estrogen receptor (ER)-mediated transactivation. Enhances PGR, PPARG, RARA-mediated transactivation. May inhibit NF-kappa-B transcription and promote apoptosis. Represses E2F1 transcriptional activity (in a RB1-dependent manner). May be involved in growth regulation. [UniProtKB/Swiss-Prot Function]

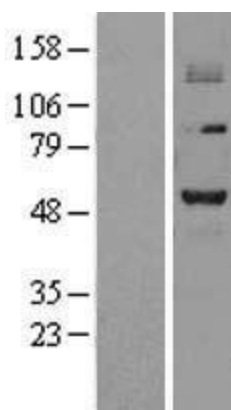
**Product images:**



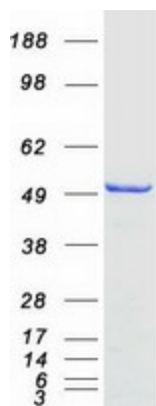
Circular map for RC218590



HEK293T cells were transfected with the pCMV6-ENTRY control (Cat# [PS100001], Left lane) or pCMV6-ENTRY PRMT2 (Cat# RC218590, Right lane) cDNA for 48 hrs and lysed. Equivalent amounts of cell lysates (5 ug per lane) were separated by SDS-PAGE and immunoblotted with anti-PRMT2(Cat# [TA503643]). Positive lysates [LY400590] (100ug) and [LC400590] (20ug) can be purchased separately from OriGene.



Western blot validation of overexpression lysate (Cat# [LY400590]) using anti-DDK antibody (Cat# [TA50011-100]). Left: Cell lysates from untransfected HEK293T cells; Right: Cell lysates from HEK293T cells transfected with RC218590 using transfection reagent MegaTran 2.0 (Cat# [TT210002]).



Coomassie blue staining of purified PRMT2 protein (Cat# [TP318590]). The protein was produced from HEK293T cells transfected with PRMT2 cDNA clone (Cat# RC218590) using MegaTran 2.0 (Cat# [TT210002]).