

## Product datasheet for **RC218589**

### ANTXR2 (NM\_058172) Human Tagged ORF Clone

#### Product data:

Product Type:	Expression Plasmids
Product Name:	ANTXR2 (NM_058172) Human Tagged ORF Clone
Tag:	Myc-DDK
Symbol:	ANTXR2
Synonyms:	CMG-2; CMG2; HFS; ISH; JHF
Mammalian Cell Selection:	Neomycin
Vector:	pCMV6-Entry (PS100001)
E. coli Selection:	Kanamycin (25 ug/mL)



[View online »](#)

**ORF Nucleotide Sequence:**

>RC218589 representing NM\_058172  
 Red=Cloning site Blue=ORF Green=Tags(s)

TTTTGTAATACGACTCACTATAGGGCGGCCGGAATTCGTCGACTGGATCCGGTACCGAGGAGATCTGCC  
 GCC**CGCATCGCC**

ATGGTGGCGGAGCGGTCCCCGGCCCGCAGCCCCGGGAGCTGGCTGTTCCCGGGCTGTGGCTGTTGGTGC  
 TCAGCGGTCCCGGGGGCTGCTGCGCGCCAGGAGCAGCCCTCCTGCAGAAGAGCCTTTGATCTCTACTT  
 CGTCCTGGACAAGTCTGGGAGTGTGGCAAATAACTGGATTGAAATTTATAATTCGTACAGCAACTTGCG  
 GAGAGATTTGTGAGCCCTGAAATGAGATTATCTTTCATTGTGTTTTCTTCTCAAGCAACTATTATTTTGC  
 CATTAAGTGGAGACAGAGGCAAAATCAGTAAAGGCTTGGAGGATTTAAAACGTGTAGTCCAGTAGGAGA  
 GACATATATCCATGAAGGACTAAAGCTAGCGAATGAACAAATTCAGAAAGCAGGAGGCTTAAAACTCC  
 AGTATCATAATTGCTCTGACAGATGGCAAGTTGGACGGTCTGGTCCATCATATGCAGAGAAAGAGGCAA  
 AGATATCCAGGTCCTTGGGCTAGTGTATTATTGTGTTGGTGTCTTGTATTTGAACAAGCACAGCTTGA  
 AAGAATTGCTGATTCCAAGGAGCAAGTTTTCCCTGTCAAAGGTGGATTTCAAGGCTCTAAAGGAATAATT  
 AATTCTATACTAGCTCAGTCATGTACTGAAATCCTAGAATTGCAGCCCTCAAGTGTCTGTGTGGGGGAGG  
 AATTTTCAGATTGTCTTAAGTGAAGAGGATTCATGCTGGCAGTCGGAATGGCAGTGTCTCTGCACTTA  
 CACTGTAATGAAACATATACAACGAGTGTAAAACAGTAAGTGTACAGCTTAATTCTATGCTTTGTCTT  
 GCACCTATCCTGAATAAAGCTGGAGAACTCTTGATGTTTCAGTGAAGCTTAAATGGAGGAAAATCTGTCA  
 TTTTCAGGATCATAATTGTCACAGCCACAGAATGTTCTAACGGATCGCAGCCATCATTGTTATTTTGGT  
 GTTACTGCTACTCTGGGATCGGTTTGTGTTGGTGGTTTTGGCCCTTTGCTGCAAAGTGGTTATTAAG  
 GATCCTCCACCACCACCCCCCTGCACAAAAGAGGAGGAAGAAGAACCCTTGCCTACTAAAAAGTGGC  
 CAACTGTGGATGCTTCTATTATGGTGGTTCGAGGGTTGGAGGAATTAAGAATGGAGGTTCTGTGGGG  
 TGATAAAGGATCTACTGAGGAAGGTGCAAGGCTAGAGAAAAGCCAAAATGCTGTGGTGAAGATTCCTGAA  
 GAAACAGAGGAACCCATCAGGCCTAGACCACCTGACCCAAACCCACACACCAGCCTCCTCAGACAAAAT  
 GGTACACCCCAATTAAGGGTCGCTTGTGCTCTCTGGGCTTTGTTGAGGCGGCAGTATGACCGGGTTTC  
 TTTGATGCGACCTCAGGAAGGAGATGAGGGCCGGTGCATAAACTTCTCCCGAGTTCATCTCAG

**ACGCGT**ACGCGGCCGCTCGAGCAGAACTCATCTCAGAAGAGGATCTGGCAGCAATGATATCTGGATT  
 ACAAGGATGACGACGATAAGGTTTAA

**Protein Sequence:**

>RC218589 representing NM\_058172  
 Red=Cloning site Green=Tags(s)

MVAERSPARSPGSWLPGLWLLVLSGPGLLRAQEQPSCRRAFDLYFVLDKSGSVANWIEIYNFVQQLA  
 ERFVSPERMRLSFIIVFSSQATIIILPLTGDRGKISKGLEDLKRVSPVGETYIHEGLKLANEQIQKAGGLKTS  
 SIIIALTDGKLDGLVPSYAEKEAKISRLGASVYCVGVLDFEQAQLERIAADSKEQVFPVKGGFQALKGII  
 NSILAQSCTEILELQPSSVYCVGEEFQIVLSGRGFMLGSRNGSVLCTYTVNETYTTSVKPVSVQLNSMLCP  
 APILNKAGETLDVSVSFNGGKSVISGLIVTATECSNGIAAIIIVILVLLLLLIGLMWFWPLCCKVVIK  
 DPPPPPPAPKEEEEEPLPTKKWPTVDASYGGRGVGGIKRMEVVRWGDKGSTEEGARLEKAKNAVVKIPE  
 ETEEPIRPRPRPKPTHQPPQTKWYTPIKGRDLALWALLRRQYDRVSLMRPQEGDEGRCINFSRVPSQ

**TR**TRPLEQKLISEEDLAANDILDYKDDDDKV

**Chromatograms:**

[https://cdn.origene.com/chromatograms/mk6167\\_g02.zip](https://cdn.origene.com/chromatograms/mk6167_g02.zip)

**Restriction Sites:**

Sgfl-Mlul

**Cloning Scheme:**


**ACCN:** NM\_058172

**ORF Size:** 1464 bp

**OTI Disclaimer:** The molecular sequence of this clone aligns with the gene accession number as a point of reference only. However, individual transcript sequences of the same gene can differ through naturally occurring variations (e.g. polymorphisms), each with its own valid existence. This clone is substantially in agreement with the reference, but a complete review of all prevailing variants is recommended prior to use. [More info](#)

**OTI Annotation:** This clone was engineered to express the complete ORF with an expression tag. Expression varies depending on the nature of the gene.

**Components:** The ORF clone is ion-exchange column purified and shipped in a 2D barcoded Matrix tube containing 10ug of transfection-ready, dried plasmid DNA (reconstitute with 100 ul of water).

- Reconstitution Method:**
1. Centrifuge at 5,000xg for 5min.
  2. Carefully open the tube and add 100ul of sterile water to dissolve the DNA.
  3. Close the tube and incubate for 10 minutes at room temperature.
  4. Briefly vortex the tube and then do a quick spin (less than 5000xg) to concentrate the liquid at the bottom.
  5. Store the suspended plasmid at -20°C. The DNA is stable for at least one year from date of shipping when stored at -20°C.

**RefSeq:** [NM\\_058172.6](#)

**RefSeq Size:** 3881 bp

**RefSeq ORF:** 1467 bp

**Locus ID:** 118429

**UniProt ID:** [P58335](#)

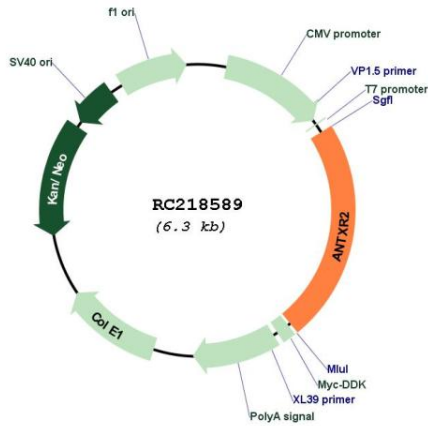
**Cytogenetics:** 4q21.21

**Protein Families:** Druggable Genome, Transmembrane

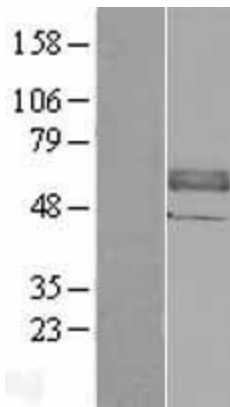
**MW:** 53.3 kDa

**Gene Summary:** This gene encodes a receptor for anthrax toxin. The protein binds to collagen IV and laminin, suggesting that it may be involved in extracellular matrix adhesion. Mutations in this gene cause juvenile hyaline fibromatosis and infantile systemic hyalinosis. Multiple transcript variants encoding different isoforms have been found for this gene. [provided by RefSeq, Mar 2009]

**Product images:**



Circular map for RC218589



Western blot validation of overexpression lysate (Cat# [LY403300]) using anti-DDK antibody (Cat# [TA50011-100]). Left: Cell lysates from untransfected HEK293T cells; Right: Cell lysates from HEK293T cells transfected with RC218589 using transfection reagent MegaTran 2.0 (Cat# [TT210002]).

Coomassie blue staining of purified ANTXR2 protein (Cat# [TP318589]). The protein was produced from HEK293T cells transfected with ANTXR2 cDNA clone (Cat# RC218589) using MegaTran 2.0 (Cat# [TT210002]).