

## Product datasheet for RC218584

### TOPBP1 (NM\_007027) Human Tagged ORF Clone

#### Product data:

Product Type:	Expression Plasmids
Product Name:	TOPBP1 (NM_007027) Human Tagged ORF Clone
Tag:	Myc-DDK
Symbol:	TOPBP1
Synonyms:	Dpb11; TOP2BP1
Mammalian Cell Selection:	Neomycin
Vector:	pCMV6-Entry (PS100001)
E. coli Selection:	Kanamycin (25 ug/mL)
ORF Nucleotide Sequence:	>RC218584 representing NM_007027 Red=Cloning site Blue=ORF Green=Tags(s)

TTTTGTAATACGACTCACTATAGGGCGGCCGGAATTCGTCGACTGGATCCGGTACCGAGGAGATCTGCC  
GCC**CGATCGCC**

ATGTCCAGAAATGACAAAGAACCCTTTTTGTGAAGTTTTAAAGTCTTCAGACAATCCAAATGTTTTT  
TAAAGCTCTCGAGTCCATAAAAGAATCCAAATCAGAAGAATATCTTCAGATTATTACAGAAGAAGAGGC  
ATTGAAGATAAAGGAGAATGATAGATCACTTTATCTGTGACCCTTTAGTGGCGTTGTCTTTGATCAC  
CTCAAAAAGCTTGGCTGCAGAATTGTTGGTCTCAAGTAGTCATATTTGTATGCACCACCAGCGATGTG  
TCCAAGAGCCGAACATCCAGTTTATAATATGGTTATGTCTGATGTAACCATATCTGTACAAGTCTGGA  
AAAAGAAAAAGGAAGAAGTTCATAAATATGTACAAATGATGGCGGACGAGTATACAGAGACCTTAAT  
GTATCAGTAACTCACCTATTGCAGGAGAAGTTGGTAGCAAAAAATATTTAGTTGCTGCAACCTGAAGA  
AACCTATTTGCTTCCCTCTTGGATAAAAAACCTTTGGGAGAAGTCACAAGAGAAAAAATAACTAGATA  
TACTGATATAACATGGAAGATTCAAGTGTCTATTTTTCTTGGTTGCATAATCTGTGTGACTGGCTTA  
TGTGGCTTAGACAGGAAAGAAGTTCAGCAACTCACAGTTAAGCATGGAGGTCAATACATGGGACAATTGA  
AAATGAATGAATGTACACACCTCATTGTGCAAGAACAAAAGGTCAGAAGTATGAGTGTGCCAAGAGATG  
GAATGTACACTGTGTGACCACACAGTGGTTTTTGTGACAGTATTGAGAAAGTTTTTGTGATGATGAATCC  
ATATACAAGACAGAACCCTAGACCAGAAGCAAGACTATGCCAATTTCAACTCCTACCAGCCAGATCA  
ACACAATTGATAGTCGTAATCTTTTCAGATGTGAGCAATATTTCCAACATAAATGCAAGTTGCGTAAGTGA  
ATCAATATGTAATTCACTTAACAGCAAACTGGAGCCTACACTGAAAAATCTAGAAAACTGGATGTGAGT  
GCATTTCAAGCACCTGAAGATTTATTAGATGGTTGTGCGGATATATCTTTGCGTTTTAGTGGCAGAAAGC  
TAGATAAACTGAGAAGACTTATTAACAGTGGAGGTGGAGTTTCGTTTTAACAGCTAAATGAAGATGTAAC  
TCATGTTATTGTGGGAGATTATGATGATGAATTGAAGCAGTTTTGGAATAAATCAGCCCACAGGCCTCAT  
GTAGTGGGAGCAAAGTGGTTGCTAGAGTGTTCAGTAAAGTTATATGCTTTCTGAAGAACCATATATCC  
ATGCTAATTACCAGCCAGTGGAAATCCAGTTTCACATAAGCCTGAAAGTAAAGCAGCTCTTTAAAAAA  
GAAGAACAGCAGCTTCTCTAAGAAAGACTTTGCTCCTAGTAAAAGCATGAGCAAGCTGATGAAGATCTG



[View online »](#)

CTCTCTCAATATGAAAATGGTAGCTCCACAGTAGTTGAGGCTAAGACGTCTGAAGCCAGGCCCTTTAATG  
ATTCTACTCATGCTGAGCCCTTGAATGATTCTACTCACATTTCTTTGCAAGAAGAAAACCAAGTCTTCTGT  
CAGTCATTGTGTCCTGATGTTTCTACAATTACTGAAGAAGGCTATTTAGCCAAAAGAGTTTCTTGT  
TTGGGTTTTAGTAATGAAAATGAATCTAACATCGCAAACATCATAAAAAGAAAATGCTGGGAAAATCATGT  
CCCTTCTGAGCAGAACTGTTGCGGATTATGCTGTGGTTCTCTGCTGGGGTGTGAAGTGGAGCCACTGT  
GGGAGAAGTTGTTACAAAATACATGGCTGGTTACTTGCATAGACTATCAGACTTTGTTTATCCAAAGTCG  
AATCCTCTCTTACACCAGTCCAGTAATGACAGGAATGACTCCTTTAGAGGATGTGTTATTTTCATTTA  
GCCAGTGTGCTGGAGCAGAAAAAGAGTCTTTAACATTCCCTAGCAAACCTCCTGGAGCAAGTGTTCAGA  
ATACTTTGTTTCGCAAATCCAATGCAAAGAAAGGCATGTTTGCAGTACTCATCTTATACTGAAAAGACGT  
GGTGGCTCTAAATATGAAGCTGCAAAGAAGTGGAAATTTACCTGCCGTTACTATAGCTTGGCTGTTGGAGA  
CTGCTAGAACGGGAAAGAGAGCAGACGAAAGCCATTTTCTGATTGAAAATCAACTAAAGAAGAACGAAG  
TTTGGAAACAGAAATAACAAATGGAATCAATCTAAATTCAGATACTGCAGAGCATCTGGCACACGCCTG  
CAAACCTCACAGAAAACCGTCGTTACACCTTTAGATATGAACCGCTTTCAGAGTAAAGCTTTCCTGCTG  
TGGTCTCACAAACATGCCAGACAGGTCGACGCTCCCGCAGCAGTAGGACAACCCTTCAGAAGGAGCCCTC  
GTTACACCTGGATACACCATCAAAATTCCTGTCCAAGGACAAACTCTTCAAGCCTCCTTTGATGTGAAG  
GATGCACTTGCAGCCTTGAAAACCTCCAGGACGTCCAGCCAACAGAAAAGGAAAACCGAGTACGCCACTCT  
CAGAAGTTATTGTCAAAAACCTTGAACCTTGTCTTGGCAAATAGCTCTCGAAATGTGTGCGCTTTTCTGC  
CAGCCCTCAACTGAAAGAGGCCAGTCCAGAGAAGGAAGAGCCCAAAGCCACTTCACAAAGTAGTGGTA  
TGTGTTAGTAAAAAACTCAGTAAGAAGCAGAGTGAACAAATGGGATCGCAGCCTCTCTAGGAGCAGATT  
ACAGGTGGAGTTTTGATGAAACAGTACTCATTTTCACTATCAAGGGCGGCCAAATGACACTAATCGGGA  
GTATAATCTGTAAAAGAAAGAGGAGTACACATGTTTCCGAGCACTGGCTTTTATGATTGTGCCAAGAG  
TGTAACATCTTCTGAATCTCTTTATCCACATACTTATAATCCCAAAATGAGCTTGATATCAGCGCAG  
TGCAAGATGGCCGGCTCTGTAATAGTCGACTACTCAGCTGTGTCTTCAACAAGGATGATGAGCCAGA  
TCCTTTGATTTTGAAGAAGAAATGATGTAGACAATATGGCCACCAATAATAAAGAGTCAGCACCATCAAA  
GGAAGTGGAAAGAAATGACTCTAAAGGAGTTCTGCACAGACCTTAGAGATGAGAGAGAATTTTCAGAAGC  
AGTTACAGGAGATAATGTCTGCAACATCAATAGTAAAACCCCAAGGGCAGAGGACTTCCCTTTCAAGAAG  
TGGTTGTAAACAGCGCATCTTCAACCCCTGACAGCACTCGCTCTGCTCGCAGTGGACGAAGTAGAGTCTTA  
GAGGCACTGAGGCAGTCTCGTCAGACAGTACCTGATGTCAACACAGAGCCTTCCCAAAATGAACAGATCA  
TTTGGGATGACCCCTACAGCAAGGGAGGAGAGCAAGGCTTGGCAGCAATTTGCAGTGGCCTAGTTGTCC  
CACACAATACTCTGAGCTTCAGGTTGACATTCAAAACTTGGAGGATTCTCCTTTTCAAAAGCCTTTACAT  
GATTCAGAAATTGCTAACAGGCTGTCTGTGATCCTGGAACATACGTGTGACTGAAGCTCCCAACACC  
CAATCTCTGAAGAACTGGAACCTCCATAAAAGACAGCCACCTGATCCCTACGCCCTCAAGCCCCAGTAT  
TGCCCTTCCACTCGCAACCCCTGTGGCTCCGCACCCTAGAGAAAAGATTATAACGATAGAGGAGACT  
CATGAAGAATTAACAAAACAGTACATATTTCAAGTTATCATCTCTGAATCCTCAAGAACGTATTGACTATT  
GTCATCTGATTGAGAACTAGGTGGATTGGTGATAGAAAAGCAGTGCTTTGATCCACCTGTACACACAT  
TGTTGTGGGACATCCACTTCGAAACGAGAAGTATTTAGCCTCAGTGGCAGCTGGGAAGTGGGTGCTTCAT  
CGCTCCTACCTTGAAGCCTGCAGGACTGCTGGACACTTCGTGCAGGAAGAAGACTATGAATGGGGAAGTA  
GTTCCATACTTGATGTTCTGACTGGAATCAATGTACAGCAACGAAGACTAGCACTTGCAGCAATGAGATG  
GAGAAAAAAAATCCAGCAAAGACAAGAATCTGGCATTGTTGAGGGAGCATTAGTGGGTGGAAGGTTATT  
TTACATGTGGATCAGTCTCGAGAAGCAGGCTTCAAACGCCTTCTCAGTCAGGAGGAGCAAAGGTGCTAC  
CTGGTCATTCTGTACCTTTATTTAAAGAGGCCACACATCTTTTTCTGACTTGAATAAACTGAAACCAGA  
TGACTCAGGAGTTAATATAGCAGAAGCTGCTGCCAGAACGTGTACTGCTTGAGAACAGAATACATTGCT  
GATTATCTCATGCAGGAATCACCTCCTCATGTAGAAAAATACTGTCTACCAGAAGCTATTTCAATTTATTC  
AGAATAAAGGAACCTGGGACTGGATTATCACAAAAGAGGAAAGCTCCTACAGAAAAAATAAAATCAA  
ACGACCTAGAGTACAC

ACGCGTACGCGGCCGCTCGAGCAGAAACTCATCTCAGAAGAGGATCTGGCAGCAATGATATCCTGGATT  
ACAAGGATGACGACGATAAGGTTTAA

Protein Sequence: >RC218584 representing NM\_007027  
 Red=Cloning site Green=Tags(s)

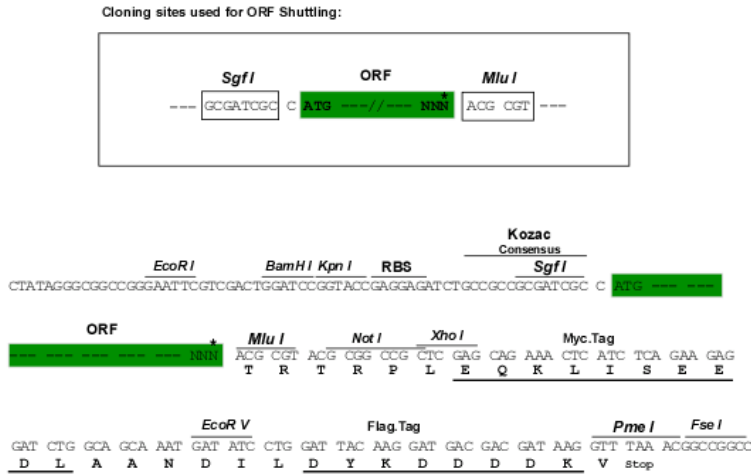
MSRNDKEPFFVKFLKSSDNSKCFKALESIKEFQSEYEQIITEEEALKIKENDRSLYICDPFSGVVFDDH  
 LKKLGCRIVGPQVVIFCMHHQRCVPRAEHPVYVMVMSDVTISCTSLKEKEKREEVHKYVQMMGGRVYRDLN  
 VSVTHLIAGEVGSKKYLVAANLKKPILLPSWIKTLWEKSQEKKITRYTDINMEDFKCPIFLGCIICVTGL  
 CGLDRKEVQQLTVKHGGQYMGQLKMNECTHLIVQEPKQKYECAKRWNVHCVTTQWFFDSIEKGFCDQES  
 IYKTEPRPEAKTMPNSSTPTSQINTIDSRTLSDVSNISININASCVSEISCNLSNKLPTLENLENLDVS  
 AFQAPEDLLDGCRIYLCGFSGRKLDKLRRLINSGGGVRFNQLNEDVTHVI VGDYDDELKQFVNKSAHRPH  
 VVGAKWLLCEFSKGYMLSEEPYIHANYQPVEIPVSHKPESKAALLKKNSSFSKKDFAPSEKHEQADEDL  
 LSQYENGSSSTVVEAKTSEARPFNDSTHAEPLNDSTHISLQEEQSSVSHCVDPVSTITEEGLFSQKSFLV  
 LGFSNENESNIANI IKENAGKIMSLLSRTVADYAVVPLLGCVEATVGEVVTNTWLVTICIDYQTLFDPKS  
 NPLFTPVPVMTGMPLEDCVISFSQCAGAEKESLTFLANLLGASVQYEFVRKSNAKKGMFASTHLILKER  
 GGSKYEAACKWNLPAVTIAWLLTARTGKRADESHFLIENSTKEERSLETEITNGINLNSDTAEHPGTRL  
 QTHRKTVVTPLDNRFQSKAFRAVVSQHARQVAASPAVGQPLQKEPSLHLDTPSKFLSKDKL FKPSFDVK  
 DALAALETPGRPSQQRKPSTPLSEVIVKNLQLALANSSRNAVALSASPQLKEAQSEKKEEAPKPLHKVVV  
 CVSKKLSKKQSELNGIAASLGADYRWSFDETVTHFIYQGRPNDTNREYKSVKERGVHIVSEHWLLDCAQE  
 CKHLPESLYPHTYNPKMSLDISAVQDGRLCNSRLLSAVSSTKDDEPDPLILEENDVDNMTNKNKESAPSN  
 GSGKNSDKGVL TQTMRENQKQLQEIMSATSI VPKPQQRSLSRSGCNSASSTPDSTRSARSGRSRVL  
 EALRQSRQTVPDVNTPEPSQNEQI IWDPTAREERARLASNLQWPSCPTQYSELQVDIQNLEDSPPFQKPLH  
 DSEIAKQAVCDPGNIRVTEAPKHPISSELETPIKDSHL IPTPQAPSI AFPLANPPVAPHPREKIIITIEET  
 HEELKKQYIFQLSSLNPQERIDYCHLIEKLGGLVIEKQCFDPTCTHIVVGHPLRNEKYLASVAAGKWVLH  
 RSYLEACRTAGHFVQEEDYEWGSSILDVLTGINVQRRLLAAMRWKRIQQRQESGIVEGAFSGWKVI  
 LHVDSREAGFKRLLQSGGAKVLPGHVPLFKEATHLFDLNLKLPDDSGVNI AEAQAQVNYCLRTEYIA  
 DYLMQESPPHVENYCLPEAISFIQNNKELGTGLSQKRKAPTEKNKIKRPRVH

TRTRPLEQKLISEEDLAANDILDYKDDDDKV

Chromatograms: [https://cdn.origene.com/chromatograms/mk8119\\_d03.zip](https://cdn.origene.com/chromatograms/mk8119_d03.zip)

Restriction Sites: SgfI-MluI

Cloning Scheme:

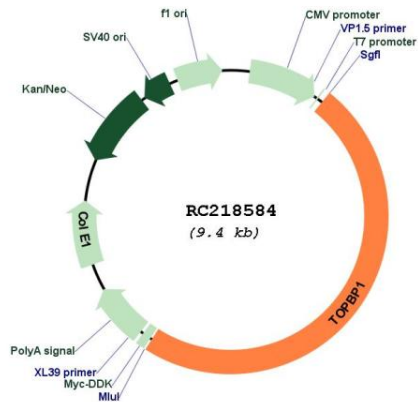


\* The last codon before the Stop codon of the ORF

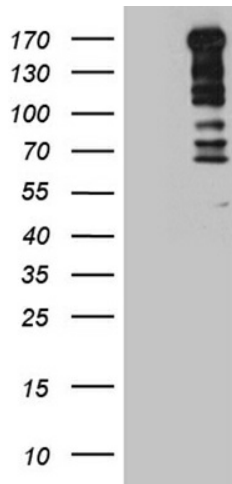
ACCN: NM\_007027

<b>ORF Size:</b>	4566 bp
<b>OTI Disclaimer:</b>	<p>Due to the inherent nature of this plasmid, standard methods to replicate additional amounts of DNA in E. coli are highly likely to result in mutations and/or rearrangements. Therefore, OriGene does not guarantee the capability to replicate this plasmid DNA. Additional amounts of DNA can be purchased from OriGene with batch-specific, full-sequence verification at a reduced cost. Please contact our customer care team at <a href="mailto:custsupport@origene.com">custsupport@origene.com</a> or by calling 301.340.3188 option 3 for pricing and delivery.</p> <p>The molecular sequence of this clone aligns with the gene accession number as a point of reference only. However, individual transcript sequences of the same gene can differ through naturally occurring variations (e.g. polymorphisms), each with its own valid existence. This clone is substantially in agreement with the reference, but a complete review of all prevailing variants is recommended prior to use. <a href="#">More info</a></p>
<b>OTI Annotation:</b>	This clone was engineered to express the complete ORF with an expression tag. Expression varies depending on the nature of the gene.
<b>Components:</b>	The ORF clone is ion-exchange column purified and shipped in a 2D barcoded Matrix tube containing 10ug of transfection-ready, dried plasmid DNA (reconstitute with 100 ul of water).
<b>Reconstitution Method:</b>	<ol style="list-style-type: none"> <li>1. Centrifuge at 5,000xg for 5min.</li> <li>2. Carefully open the tube and add 100ul of sterile water to dissolve the DNA.</li> <li>3. Close the tube and incubate for 10 minutes at room temperature.</li> <li>4. Briefly vortex the tube and then do a quick spin (less than 5000xg) to concentrate the liquid at the bottom.</li> <li>5. Store the suspended plasmid at -20°C. The DNA is stable for at least one year from date of shipping when stored at -20°C.</li> </ol>
<b>RefSeq:</b>	<a href="#">NM_007027.4</a>
<b>RefSeq Size:</b>	5378 bp
<b>RefSeq ORF:</b>	4569 bp
<b>Locus ID:</b>	11073
<b>UniProt ID:</b>	<a href="#">Q92547</a>
<b>Cytogenetics:</b>	3q22.1
<b>Domains:</b>	BRCT
<b>MW:</b>	171.1 kDa
<b>Gene Summary:</b>	<p>This gene encodes a binding protein which interacts with the C-terminal region of topoisomerase II beta. This interaction suggests a supportive role for this protein in the catalytic reactions of topoisomerase II beta through transient breakages of DNA strands. [provided by RefSeq, Jul 2008]</p>

Product images:



Circular map for RC218584



HEK293T cells were transfected with the pCMV6-ENTRY control (Cat# [PS100001], Left lane) or pCMV6-ENTRY TOPBP1 (Cat# RC218584, Right lane) cDNA for 48 hrs and lysed. Equivalent amounts of cell lysates (5 ug per lane) were separated by SDS-PAGE and immunoblotted with anti-TOPBP (Cat# [TA811658]). Positive lysates [LY416246] (100ug) and [LC416246] (20ug) can be purchased separately from OriGene.