

Product datasheet for **RC218582**

NR2C1 (NM_003297) Human Tagged ORF Clone

Product data:

Product Type:	Expression Plasmids
Product Name:	NR2C1 (NM_003297) Human Tagged ORF Clone
Tag:	Myc-DDK
Symbol:	NR2C1
Synonyms:	TR2
Mammalian Cell Selection:	Neomycin
Vector:	pCMV6-Entry (PS100001)
E. coli Selection:	Kanamycin (25 ug/mL)



[View online »](#)

ORF Nucleotide Sequence:

>RC218582 representing NM_003297
 Red=Cloning site Blue=ORF Green=Tags(s)

TTTTGTAATACGACTCACTATAGGGCGGCCGGAATTCGTCGACTGGATCCGGTACCGAGGAGATCTGCC
 GCC**CGGATCGCC**

ATGGCAACCATAGAAGAAATTGCACATCAAATTATTGAACAACAGATGGGAGAGATTGTTACAGAGCAGC
 AAAGTGGCAGAAAATCCAGATTGTGACAGCACTTGATCATAATACCCAAGGCAAGCAGTTCATTCTGAC
 AAATCACGACGGCTCTACTCCAAGCAAAGTCATTCTGGCCAGGCAAGATCCACTCCGGGAAAAGTTTTTC
 CTTAACAATCCAGATGCAGCAGGTGTCAACCAGTTATTTTTTACCCTCTGATCTGTCTGCACAACACC
 TGCAGCTCCTAACAGATAATTCTCCAGACCAAGGACCAAATAAGGTTTTTGTCTTTGCGTAGTATGTGG
 AGACAAAGCATCAGGACGTCATTATGGAGCAGTAACTTGTGAAGGCTGCAAAGGATTTTTTAAAAGAAGC
 ATCCGAAAAAATTTAGTATATTCATGTCGAGGATCAAAGGATTGTATTATTAATAAGCACCACCGAAACC
 GCTGTCAATACTGCAGGTTACAGAGATGTATTGCGTTTGAATGAAGCAAGACTCTGTCCAATGTGAAAG
 AAAACCCATTGAAGTATCACGAGAAAAATCTTCCAAGTGTCCGCTTCAACAGAAAAATCTATATCCGA
 AAGGACCTTCGTAGCCATTAAGTCAACTCCAATTTTGTAAACAGATAGTAAAAGTACAAGGTCAACAG
 GACTGTTAGATTCAGGAATGTTCAATATTCATCCATCTGGAGTAAAAACTGAGTCAGCTGTGCTGAT
 GACATCAGATAAGGCTGAATCATGTGAGGAGATTTAAGTACATTGGCCAATGTGGTTACATCATTAGCG
 AATCTTGGAAAACTAAAGATCTTTCTCAAAATAGTAAAGAAATGTCTATGATTGAAAGCTTAAGCAATG
 ATGATACCTCTTTGTGTGAATTTCAAGAAATGCAGACCAACGGTGTGTTCAAGGGCATTGACACTCT
 TGCAAAAGCATTGAATCCTGGAGAGACACAGCCTGCCAGAGCTCAGTAGCGGCATGGAAGGAAGTGA
 CACCTAATCACTGGAGATTCAAGCATAAATTACACCGAAAAAGAGGGCCACTTCTCAGCGATTACATG
 TAGCTTTTCAAGGCTCACCATGCCTTCTCCTATGCCTGAGTACCTGAATGTGCACTACATTTGGGAGTCTGC
 CTCCAGACTGCTGTTCTTATCAATGCACCTGGGCACTTTTCCGATTCCTTTTCCAGGCTCTAGGGCAAGAA
 AACAGCATATCACTGGTGAAGCTTACTGGAATGAACTTTTTACTCTTGGTCTTGCCAGTGTGCAAG
 TGATGAATGTAGCAACTATATTAGCAACATTTGTCAATTGTCTTCACAATAGTCTTCAACAAGATAAAAT
 GTCAACAGAAAAGAAGAAAATTTATGATGGAGCACATCTTCAAACTACAGGAGTTTTGTAACAGCATGGTT
 AAAGTCTGATTGATGGATACGAATATGCCTACCTGAAGGCAATAGTACTCTTCAAGTCCAGATCATCCAA
 GCCTAGAAAACATGGAACAGATAGAGAAATTTCAAGAAAAGGCTTATGTGGAATTTCAAGATTATATAAC
 CAAAACATATCCAGATGACACCTACAGGTTATCCAGACTACTACTCAGATTGCCAGCTTTAAGACTGATG
 AATGCTACCATCACTGAAGAATTTTTTCAAAGTCTCATTGGCAATATACGAATTGACAGTGTATCC
 CACATATTTTGAAGTGGAGCCTGCAGATTATAACTCTCAATAATTGGTCACAGCATT

ACGCGTACGCGGCCGCTCGAGCAGAACTCATCTCAGAAGAGGATCTGGCAGCAAATGATATCCTGGATT
 ACAAGGATGACGACGATAAGGTTAA

Protein Sequence:

>RC218582 representing NM_003297
 Red=Cloning site Green=Tags(s)

MATIEEIAHQIIEQQMGEIVTEQQTGQKIQIVTALDHNTQGKQFILTNDHGSTPSKVILARQDSTPGKVF
 LTPDAAGVNQLFFTPDL SAQHLQLL TDNSPDQGNKVF DL CVVCGDKASGRHYGAVTCEGCKGFFKRS
 IRKNLVYSCRGSKDCIINKHHRNRCQYRQLQRCAIFGMKQDSVQCERKPIEVSREKSSNCAASTEKIYIR
 KDLRSPLTATPTFVTDSESTRSTGLLDSGMFMNIHPSGVKTESAVLMTSDKAESCQGDLSLANVVTSLA
 NLGKTKDLSQNSNEMSMIESL SDDTSLCEFQEMQTNQDVSRAFDTLAKALNPGESTACQSSVAGMEGSV
 HLITGDSSINYTEKEGPLLSDSHVAFRLTMPSPMPEYLVNHYIGESASRLLFLSMHWALSIPSFQALGQE
 NSISLVKAYWNEFLTLGLAQCWQVMNVATILATFVNCLHNSLQQDKMSTERRKLLMEHIFKLQEF CNSMV
 KLCIDGYEYAYLKAIVLFS PDHPSLENMEQIEKFQEKAYVEFQDYITKTYPPDDTYRLSRLRLPALRLM
 NATITEELFFKGLIGNIRIDSVIPHILKMEPADYNSQIIGHSI

TRTRPLEQKLISEEDLAANDILDYKDDDDKV

Restriction Sites:

Sgfl-MluI

Cloning Scheme:


ACCN: NM_003297

ORF Size: 1809 bp

OTI Disclaimer: Due to the inherent nature of this plasmid, standard methods to replicate additional amounts of DNA in E. coli are highly likely to result in mutations and/or rearrangements. Therefore, OriGene does not guarantee the capability to replicate this plasmid DNA. Additional amounts of DNA can be purchased from OriGene with batch-specific, full-sequence verification at a reduced cost. Please contact our customer care team at custsupport@origene.com or by calling 301.340.3188 option 3 for pricing and delivery.

The molecular sequence of this clone aligns with the gene accession number as a point of reference only. However, individual transcript sequences of the same gene can differ through naturally occurring variations (e.g. polymorphisms), each with its own valid existence. This clone is substantially in agreement with the reference, but a complete review of all prevailing variants is recommended prior to use. [More info](#)

OTI Annotation: This clone was engineered to express the complete ORF with an expression tag. Expression varies depending on the nature of the gene.

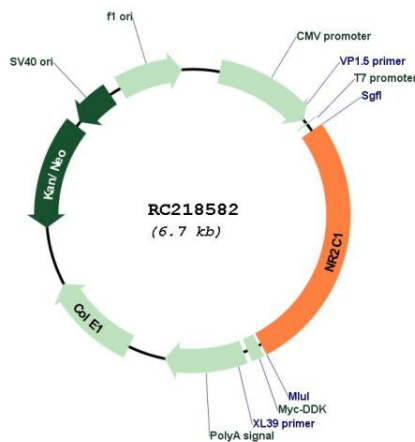
Components: The ORF clone is ion-exchange column purified and shipped in a 2D barcoded Matrix tube containing 10ug of transfection-ready, dried plasmid DNA (reconstitute with 100 ul of water).

- Reconstitution Method:**
1. Centrifuge at 5,000xg for 5min.
 2. Carefully open the tube and add 100ul of sterile water to dissolve the DNA.
 3. Close the tube and incubate for 10 minutes at room temperature.
 4. Briefly vortex the tube and then do a quick spin (less than 5000xg) to concentrate the liquid at the bottom.
 5. Store the suspended plasmid at -20°C. The DNA is stable for at least one year from date of shipping when stored at -20°C.

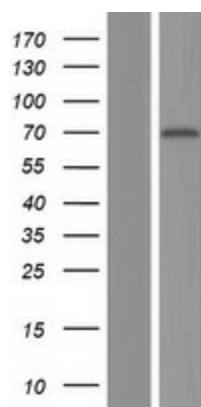
RefSeq: [NM_003297.4](#)

RefSeq Size:	4068 bp
RefSeq ORF:	1812 bp
Locus ID:	7181
UniProt ID:	P13056
Cytogenetics:	12q22
Domains:	HOLI, zf-C4
Protein Families:	Druggable Genome, Nuclear Hormone Receptor, Transcription Factors
MW:	67.8 kDa
Gene Summary:	This gene encodes a nuclear hormone receptor characterized by a highly conserved DNA binding domain (DBD), a variable hinge region, and a carboxy-terminal ligand binding domain (LBD) that is typical for all members of the steroid/thyroid hormone receptor superfamily. This protein also belongs to a large family of ligand-inducible transcription factors that regulate gene expression by binding to specific DNA sequences within promoters of target genes. Multiple alternatively spliced transcript variants have been described, but the full-length nature of some of these variants has not been determined. [provided by RefSeq, Jul 2008]

Product images:



Circular map for RC218582



Western blot validation of overexpression lysate (Cat# [LY418783]) using anti-DDK antibody (Cat# [TA50011-100]). Left: Cell lysates from untransfected HEK293T cells; Right: Cell lysates from HEK293T cells transfected with RC218582 using transfection reagent MegaTran 2.0 (Cat# [TT210002]).