

Product datasheet for **RC218581**

IL3RB (CSF2RB) (NM_000395) Human Tagged ORF Clone

Product data:

Product Type:	Expression Plasmids
Product Name:	IL3RB (CSF2RB) (NM_000395) Human Tagged ORF Clone
Tag:	Myc-DDK
Symbol:	IL3RB
Synonyms:	betaGMR; CD131; CDw131; IL3RB; IL5RB; SMDP5
Mammalian Cell Selection:	Neomycin
Vector:	pCMV6-Entry (PS100001)
E. coli Selection:	Kanamycin (25 ug/mL)



[View online »](#)

ORF Nucleotide Sequence:

>RC218581 representing NM_000395
 Red=Cloning site Blue=ORF Green=Tags(s)

TTTTGTAATACGACTCACTATAGGGCGGCCGGAATTCGTCGACTGGATCCGGTACCGAGGAGATCTGCC
 GCC**CGCATCGCC**

ATGGTGTGCCCCAGGGGCTGCTCTCCATGGCCCTGTGCTGGCCCTGTGCTGGGAGCGCAGCCTGGCAGGGG
 CAGAAGAAACCATCCCGCTGCAGACCCTGCGCTGCTACAACGACTACACCAGCCACATCACCTGCAGGTG
 GGACAGACACCCAGGATGCCAGCGGCTCGTCAACGTGACCCTCATTCCGCCGGTGAATGAGGACCTCCTG
 GAGCCAGTGTCTGTGACCTCAGTGATGACATGCCCTGGTCCAGCCTGCCCCATCCCCGCTGCGTGCCCA
 GGAGATGTGTCATTCCCTGCCAGAGTTTGTGCTCACTGACGTTGACTACTTCTCATTCAAACAGACAG
 GCCTCTGGGCACCCGGCTCACCGTCACTCTGACCCAGCATGTCCAGCCTCCTGAGCCAGGGACCTGCAG
 ATCAGCACCGACCAGGACCACTTCTGCTGACCTGGAGTGTGGCCCTTGGGAGTCCCAGAGCCACTGGT
 TGTCCCAGGGGATCTGGAGTTTGGAGTGTCTACAAGCGGCTTCCAGGACTTTGGGAGGACGCAGCCAT
 CCTCCTCTCAAACACCTCCAGGCCACCCTGGGGCCAGAGCACCTCATGCCAGCAGCACCTACGTGGCC
 CGAGTACGGACCCGCTGGCCCCAGGTTCTCGGCTCTCAGGACGTCCCAGCAAGTGGAGCCAGAGGTTT
 GCTGGGACTCCCAGCCAGGGGATGAGGCCAGCCCCAGAACCTGGAGTGTCTTTGACGGGGCCGCGCT
 GCTCAGCTGCTCCTGGGAGGTGAGGAAGGAGGTGGCCAGCTCGGTCTCCTTTGGCCTATTCTACAAGCCC
 AGCCCAGATGCAGGGGAGGAAGAGTGTCCCCAGTGTGAGGGAGGGGCTCGGCAGCCTCCACACCAGGC
 ACCACTGCCAGATTCCCGTGCCGACCCCGCGACCCACGGCCAATACATCGTCTCTGTTCCAGCCAAGGAG
 GGCAGAGAAACACATAAAGAGCTCAGTGAACATCCAGATGGCCCTCCATCCCTCAACGTGACCAAGGAT
 GGAGACAGCTACAGCCTGCGCTGGGAAACAATGAAAATGCGATACGAACACATAGACCACACATTTGAGA
 TCCAGTACAGAAAGACACGGCCACGTGGAAGGACAGCAAGACCGAGACCCTCCAGAACCACCCACAGCAT
 GGCCCTGCCAGCCCTGGAGCCCTCCACCAGGTAAGTGGGCCAGGGTGGAGGTCAGGACCTCCCGCACCGGC
 TACAACGGGATCTGGAGTGGAGTGGAGTGGGCGCGCTCCTGGGACACCGAGTCCGTGCTGCCTATGTGGG
 TGCTGGCCCTCATCGTGATCTTCCCTACCATCGCTGTGCTCCTGGCCCTCCGCTTCTGTGGCATCTACGG
 GTACAGGCTGCGCAGAAAGTGGGAGGAGAAGATCCCCAACCCAGCAAGAGCCACCTGTTCCAGAACGGG
 AGCGCAGAGCTTTGGCCCCAGGCAGCATGTGGCCTTCACTAGCGGGAGTCCCCACACCAGGGGCGCT
 GGGGCAGCCGCTTCCCTGAGCTGGAGGGGTGTTCCCTGTAGGATTCGGGGACAGCGAGGTGTACCTCT
 CACCATAGAGGACCCCAAGCATGTCTGTGATCCACCATCTGGCCTGACACGACTCCAGTGCCTCAGAT
 CTACCCACAGAGCAGCCCCAGCCCCAGCCAGGCCGCTGCCGCTCCACACACCTGAGAAACAGG
 CTTCCAGCTTTGACTTCAATGGGCCCTACTGGGGCCGCCACAGCCGCTCCCTACCTGACATCCTGGG
 CCAGCCGGAGCCCCACAGGAGGGTGGGAGCCAGAAGTCCCCACCTCCAGGGTCCCTGGAGTACCTGTGT
 CTGCTGCTGGGGGGCAGGTGCAACTGGTCCCTCTGGCCAGGCGATGGGACCGGGACAGGCCGTGGAAG
 TGGAGAGAAGGCCGAGCCAGGGGGTGCAGGGAGTCCCTCCCTGGAGTCCGGGGGAGGCCCTGCCCTCC
 TGCTCTTGGGCCAAGGGTGGGAGGACAGGACCAAAAGGACAGCCCTGTGGCTATACCCATGAGCTCTGGG
 GACTGAGGACCCTGGAGTGGCCTCTGGTTATGTCTCCTCTGCAGACCTGGTATTACCCCAAACCTCAG
 GGGCCTCGTCTGTCTCCCTAGTTCCTCTCTGGCCTCCCCTCAGACCAGACCCACAGCTTATGTCTGG
 GCTGGCCAGTGGACCCCTGGAGCCCAAGGCCCTGTGAAGTCAAGGTTTGGAGGCTATGTGGAGCTCCCT
 CCAATTGAGGGCCGCTCCCCAGGTACCAAGGAACAATCCTGTCCCCCTGAGGCCAAAAGCCCTGTCC
 TGAACCCAGGGGAACGCCCGGCAGATGTGTCCCAACATCCCCACAGCCGAGGGCCTCCTGTCTGCA
 GCAAGTGGGCGACTATTGCTTCCCTCCCCGGCTGGGGCCCGCCCTCTCTCGCTCCGGAGTAAACCTTCT
 TCCCCGGGACCCGGTCTGAGATCAAGAACCTAGACCAGGCTTTTCAAGTCAAGAAGCCCCAGGCCAGG
 CTGTGCCCGAGGTGCCGTCATTAGCTCTTCAAAGCCCTGAAGCAGCAGGACTACCTGTCTTGCCCC
 TTGGGAGGTCAACAAGCCTGGGGAGGTGTGT

ACGCGTACGCGGCCGCTCGAGCAGAAACTCATCTCAGAAGAGGATCTGGCAGCAAATGATATCCTGGATT
 ACAAGGATGACGACGATAAGGTTTAA

Protein Sequence: >RC218581 representing NM_000395
 Red=Cloning site Green=Tags(s)

MVLAQGLLSMALLALCWERSLAGAEETIPLQLRCYNDYTSHTICRWADTQDAQRLVNVTLIRRVEDLL
 EPVSCDLSDMPWSACPHPRCVPRRCVIPCQSFVVDVDFYFSFQPDRLGTRLTVTLTQHVPPEPRDLQ
 ISTDQDHFLLTWSVALGSPQSHWLSPGDLEFEVYKRLQDSWEDAAILLNNTSQATLGPHELMPSSTYVA
 RVRTRLAPGSRLSGRPSKWSPEVCWDSQPGEAQPQNLECFDFDGAAVLSCSWEVRKEVASSVSFGLFYKP
 SPDAGEEECSPLVREGLGSLHTRHHCQIPVPDPATHGQYIVSVQPRRAEKHIKSSVNIQMAPPVSLNVTKD
 GDSYSLRWETMKMRYEHIDHTFEIQYRKTATWKDSKTETLQNAHSMALPALEPSTRYWARVVRVTRTSG
 YNGIWSEWSEARSWDTESVLPWVLAIVIFLTIIVLLALRFCGIYGYRLRRKWEKIPNPSKSHLFQNG
 SAELWPPGMSAFTSGSPPHQGPWGSRFPELEGVFPVGFVGDSEVSPLTIEDPKHVCPPSPGPDTPAASD
 LPTEQPPSPQPGPPAASHTPEKQASSFDNGPYLGPVHRSRSLPDILGQPEPPQEGGSQKSPPPGSLEYLC
 LPAGGQVQLVPLAQAMGPGQAVEVERRPSQGAAGSPSLESGGGPAPPALGPRVGGQDQKDSVPAIPMSSG
 DTEDPGVASGYVSADLVFTPNSSGASSVSLVPSLGLPSDQTPSLCPGLASGPPGAPGVKSGFEGYVELP
 PIEGRSPRSPRNPVPEAKSPVLPGERPADVSPTSPQPEGLLVLQQVGDYCFPLPGLGPGPLSLRSKPS
 SPGPGPEIKNLDQAFQVKKPPGQAVPQVPIQLFKALKQQDYLSLPPWEVKNPGEVC

TRTRPLEQKLISEEDLAANDILDYKDDDDKV

Chromatograms: https://cdn.origene.com/chromatograms/mk6478_c05.zip

Restriction Sites: SgfI-MluI

Cloning Scheme:

Cloning sites used for ORF Shuttling:

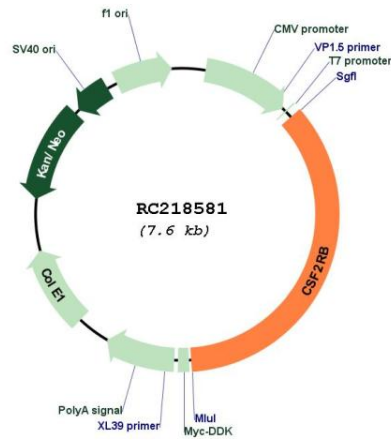


* The last codon before the Stop codon of the ORF

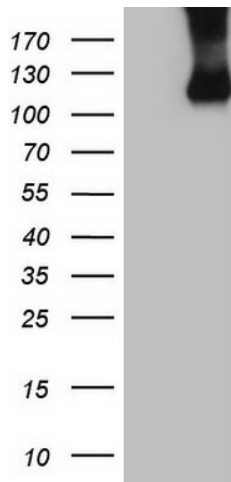
ACCN: NM_000395

ORF Size:	2691 bp
OTI Disclaimer:	The molecular sequence of this clone aligns with the gene accession number as a point of reference only. However, individual transcript sequences of the same gene can differ through naturally occurring variations (e.g. polymorphisms), each with its own valid existence. This clone is substantially in agreement with the reference, but a complete review of all prevailing variants is recommended prior to use. More info
OTI Annotation:	This clone was engineered to express the complete ORF with an expression tag. Expression varies depending on the nature of the gene.
Components:	The ORF clone is ion-exchange column purified and shipped in a 2D barcoded Matrix tube containing 10ug of transfection-ready, dried plasmid DNA (reconstitute with 100 ul of water).
Reconstitution Method:	<ol style="list-style-type: none">1. Centrifuge at 5,000xg for 5min.2. Carefully open the tube and add 100ul of sterile water to dissolve the DNA.3. Close the tube and incubate for 10 minutes at room temperature.4. Briefly vortex the tube and then do a quick spin (less than 5000xg) to concentrate the liquid at the bottom.5. Store the suspended plasmid at -20°C. The DNA is stable for at least one year from date of shipping when stored at -20°C.
RefSeq:	NM_000395.3
RefSeq Size:	2996 bp
RefSeq ORF:	2694 bp
Locus ID:	1439
UniProt ID:	P32927
Cytogenetics:	22q12.3
Domains:	FN3
Protein Families:	Druggable Genome, Transmembrane
Protein Pathways:	Apoptosis, Cytokine-cytokine receptor interaction, Jak-STAT signaling pathway
MW:	97.34 kDa
Gene Summary:	The protein encoded by this gene is the common beta chain of the high affinity receptor for IL-3, IL-5 and CSF. Defects in this gene have been reported to be associated with protein alveolar proteinosis (PAP). [provided by RefSeq, Jul 2008]

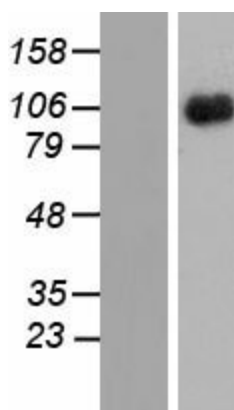
Product images:



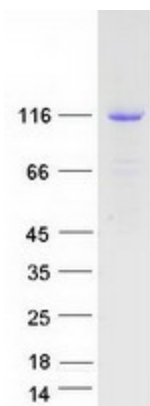
Circular map for RC218581



HEK293T cells were transfected with the pCMV6-ENTRY control (Cat# [PS100001], Left lane) or pCMV6-ENTRY CSF2RB (Cat# RC218581, Right lane) cDNA for 48 hrs and lysed. Equivalent amounts of cell lysates (5 ug per lane) were separated by SDS-PAGE and immunoblotted with anti-CSF2RB (Cat# [TA807897])(1:2000). Positive lysates [LY424744] (100ug) and [LC424744] (20ug) can be purchased separately from OriGene.



Western blot validation of overexpression lysate (Cat# [LY424744]) using anti-DDK antibody (Cat# [TA50011-100]). Left: Cell lysates from untransfected HEK293T cells; Right: Cell lysates from HEK293T cells transfected with RC218581 using transfection reagent MegaTran 2.0 (Cat# [TT210002]).



Coomassie blue staining of purified CSF2RB protein (Cat# [TP318581]). The protein was produced from HEK293T cells transfected with CSF2RB cDNA clone (Cat# RC218581) using MegaTran 2.0 (Cat# [TT210002]).