

Product datasheet for **RC218570**

ARRDC5 (NM_001080523) Human Tagged ORF Clone

Product data:

Product Type:	Expression Plasmids
Product Name:	ARRDC5 (NM_001080523) Human Tagged ORF Clone
Tag:	Myc-DDK
Symbol:	ARRDC5
Mammalian Cell Selection:	Neomycin
Vector:	pCMV6-Entry (PS100001)
E. coli Selection:	Kanamycin (25 ug/mL)
ORF Nucleotide Sequence:	>RC218570 representing NM_001080523 Red=Cloning site Blue=ORF Green=Tags(s)

TTTTGTAATACGACTCACTATAGGGCGGCCGGAATTCGTCGACTGGATCCGGTACCGAGGAGATCTGCC
GCC**CGATCGCC**

ATGGGGGACAGAGAGGAATGTCTCTACCCCCAACCCCCATGTCTGTGGTGAAGTCGATCGAATTAG
TGCTGCCCCGAGGATAGAATCTACCTGGCTGGCTCCAGCATAAAAGGGCAGGTGATCTTAACCCTGAACAG
CACCCCTGGTGGACCCATAGTGAAGGTGGAGCTCGTGGGAAGGGTTACGTGGAATGGAGTGAAGAAGCC
GGGGCATCCTGTGATTATAGCAGAAATGTTATTTGCAACAACAAGGCAGACTACGTGCATAAGACAAGA
CATTCCCAGTGGAGGATAATTGGTTAAGTGCAGGCAGCCACACCTTTGACTTCCATTTCAACTTACCTCC
CAGGCTTCCTTCTACCTTACCAGCAAATTTGGCCATGTCTTCTATTTTCGTACAAGCTTCCCTGCATGGCC
AGGGAACACATTTTAGCCAAGAAGAGGATGTACTTATTGGTTCAAGGAAGTCCACCTTCCACAAAAGAAA
CCCCATCCAGAACCCTTGTTTCGTGGAGGCTGAGGAGAAAGTCTCCTACAAGTCTGCCGCCAGGGCAC
TGTCTGTTTGAAATCCAGATGGAAAGGAACACCTTACGCCAGGAGAGAAGGTCGTCTTCAACAACAGAG
ATCAACAACCAGACCAGCAAATGCATCAAGACGGTCGTATTGCGCCTGTATGCCACATACAGTACGAGG
GCTTACGCCAGTGCAGAGCGGGCTCGGCTGGACAGCAGCGAGCTTCTGAGGCAGGAGGCCAACAC
CCCCGTGACCCGCTTCAACACCACCAAGGTTGTCAGCACCTTCAACCTGCCGTTGCTGCTGTCCGTGAGC
AGCAGCACGCAGGACGGTGAATCATGCACACTCGCTACGAGCTGGTACCACCGTGCACCTGCCCTGGT
CCCTGACCAGCCTCAAGGCCAAAGTTCCCATCATCATACCAGCGCCTCAGTGGACTCTGCCATCTGCCA
GCTGTGACAGGACGGAGTGTACCCGTGAACCCAGATCACCAGAAT

ACGCGTACGCGGCCGCTCGAGCAGAACTCATCTCAGAAGAGGATCTGGCAGCAAATGATATCCTGGATT
ACAAGGATGACGACGATAAGGTTTAA



[View online »](#)

Protein Sequence: >RC218570 representing NM_001080523
Red=Cloning site Green=Tags(s)

MGDREECLSTPQPPMSVVKSIELVLPEDRIYLAGSSIKQVILTLNSTLVDPIVKVELVGRGYVEWSEEA
 GASCDYSRNVICNNKADYVHKTKTFPVEDNWL SAGSHTFDFHFNLPRLPSTFTSKFGHVFYFVQASCMG
 REHILAKRMYLLVQGTSTFHKETPFQNP L FVEAEKVSYNCCRQGTVCLQIQMERNTFTPGKVVFTTE
 INNQTSKCIKTVVFALYAHIQYEGFTPSAERRSRLDSSSELLRQEANTPVTRFNTTKVVSTFNLPLLLSVS
 SSTQDGEIMHTRYELVTTVHLPWLSLTKAKVPIIITSASVDSATCQLSEGDGVLVNPDPHQN

TRTRPLEQKLISEEDLAANDILDYKDDDDKV

Chromatograms: https://cdn.origene.com/chromatograms/mk8021_e12.zip

Restriction Sites: SgfI-MluI

Cloning Scheme:

Cloning sites used for ORF Shuttling:



* The last codon before the Stop codon of the ORF

ACCN: NM_001080523

ORF Size: 1026 bp

OTI Disclaimer: The molecular sequence of this clone aligns with the gene accession number as a point of reference only. However, individual transcript sequences of the same gene can differ through naturally occurring variations (e.g. polymorphisms), each with its own valid existence. This clone is substantially in agreement with the reference, but a complete review of all prevailing variants is recommended prior to use. [More info](#)

OTI Annotation: This clone was engineered to express the complete ORF with an expression tag. Expression varies depending on the nature of the gene.

Components: The ORF clone is ion-exchange column purified and shipped in a 2D barcoded Matrix tube containing 10ug of transfection-ready, dried plasmid DNA (reconstitute with 100 ul of water).

Reconstitution Method:

1. Centrifuge at 5,000xg for 5min.
2. Carefully open the tube and add 100ul of sterile water to dissolve the DNA.
3. Close the tube and incubate for 10 minutes at room temperature.
4. Briefly vortex the tube and then do a quick spin (less than 5000xg) to concentrate the liquid at the bottom.
5. Store the suspended plasmid at -20°C. The DNA is stable for at least one year from date of shipping when stored at -20°C.

Note: Plasmids are not sterile. For experiments where strict sterility is required, filtration with 0.22um filter is required.

RefSeq: [NM_001080523.1](#), [NP_001073992.1](#)

RefSeq Size: 1638 bp

RefSeq ORF: 987 bp

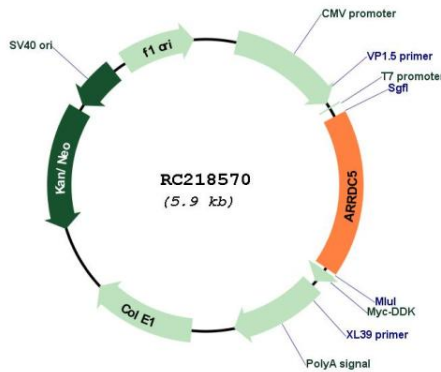
Locus ID: 645432

UniProt ID: [A6NEK1](#)

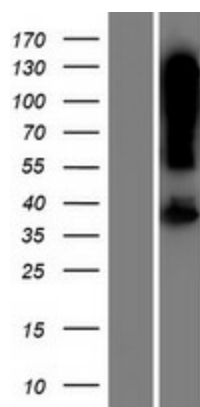
Cytogenetics: 19p13.3

MW: 38.2 kDa

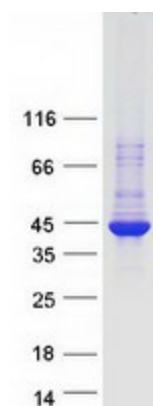
Product images:



Circular map for RC218570



Western blot validation of overexpression lysate (Cat# [LY421078]) using anti-DDK antibody (Cat# [TA50011-100]). Left: Cell lysates from untransfected HEK293T cells; Right: Cell lysates from HEK293T cells transfected with RC218570 using transfection reagent MegaTran 2.0 (Cat# [TT210002]).



Coomassie blue staining of purified ARRDC5 protein (Cat# [TP318570]). The protein was produced from HEK293T cells transfected with ARRDC5 cDNA clone (Cat# RC218570) using MegaTran 2.0 (Cat# [TT210002]).