

Product datasheet for **RC218568**

SLC22A6 (NM_004790) Human Tagged ORF Clone

Product data:

Product Type:	Expression Plasmids
Product Name:	SLC22A6 (NM_004790) Human Tagged ORF Clone
Tag:	Myc-DDK
Symbol:	SLC22A6
Synonyms:	HOAT1; OAT1; PAHT; ROAT1
Mammalian Cell Selection:	Neomycin
Vector:	pCMV6-Entry (PS100001)
E. coli Selection:	Kanamycin (25 ug/mL)



[View online »](#)

ORF Nucleotide Sequence:

>RC218568 representing NM_004790
 Red=Cloning site Blue=ORF Green=Tags(s)

TTTTGTAATACGACTCACTATAGGGCGGCCGGAATTCGTCGACTGGATCCGGTACCGAGGAGATCTGCC
 GCC**GCGATCGCC**

ATGGCCTTTAATGACCTCCTGCAGCAGGTGGGGGTGTGCGCCGCTTCCAGCAGATCCAGGTACCCTGG
 TGGTCTCCCCCTGCTCCTGATGGCTTCTCACAACACCCTGCAGAACTTCACTGCTGCCATCCCTACCCA
 CCACTGCCGCCCGCTGCCGATGCCAACCTCAGCAAGAACGGGGGCTGGAGGTCTGGCTGCCCCGGGAC
 AGGCAGGGGCAGCCTGAGTCCTGCCCTCCGCTTACCTCCCCGAGTGGGGACTGCCCTTTCTCAATGGCA
 CAGAAGCCAATGGCACAGGGGCCACAGAGCCCTGCACCGATGGCTGGATCTATGACAACAGCACCTTCCC
 ATCTACCATCGTACTGAGTGGGACCTTGTGTGCTCTCACAGGGCCCTACGCCAGCTGGCCAGTCTTGT
 TACATGGTGGGGGTGCTGCTCGGAGCCATGGTGTTCGGCTACCTTGACAGCAGGCTAGGCCGCCGGAAGG
 TACTCATCTTGAACACCTGCAGACAGCTGTGTCAGGGACCTGCGCAGCCTTCGCACCCAATTCCCAT
 CTACTGCGCTTCCGGCTCCTCTCGGGCATGGCTCTGGCTGGCATCTCCCTCACTGCATGACACTGAAT
 GTGGAGTGGATGCCATTACACACGGGCTGCGTGGGCACCTTGATTGGCTATGTCTACAGCCTGGGCC
 AGTTCTCCTGGCTGGTGTGGCCTACGCTGTGCCCACTGGCGCCACCTGCAGCTACTGGTCTCTGCGCC
 TTTTTTGGCTTCTTCACTACTCCTGGTCTTCAATTGAGTCGGCCCGCTGGCACTCCTCCTCCGGGAGG
 CTGGACCTCACCTGAGGGCCCTGCAGAGAGTCGCCCGGATCAATGGGAAGCGGGAAGAAGGAGCCAAAT
 TGAGTATGGAGGTACTCCGGGCCAGTCTGCAGAAGGAGCTGACCATGGGCAAAGGCCAGGCATCGGCCAT
 GGAGCTGCTGCGCTGCCCACTCCGCCACCTTCTCCTGCTCTCCATGCTGTGGTTGCCACTAGC
 TTTGCATACTATGGGCTGGTCAATGGACCTGCAGGGCTTGGAGTCAGCATCTACCTAATCCAGGTGATCT
 TTGGTGTGGACCTGCTGCCAAGCTTGTGGGCTTCTTGTGCATCACTCCCTGGCTGCCCGCCGCTGC
 CCAGATGGCTGCACTGCTGCTGGCAGGCATCTGCATCCTGCTCAATGGGGTATACCCAGGACCGTCC
 ATTGTCCGAACCTCTCTTGTGCTGCTGGGAAGGGTTGTCTGGCTGCCTCCTCACTGCATCTTCTGT
 AACTGGGAACTGTATCCCAATGATCCGGCAGACAGGCATGGGAATGGGCAGCACCATGGCCCGAGT
 GGGCAGCATCGTGGCCACTGGTGGAGCATGACTGCCGAGCTCTACCCCTCCATGCCTCTTCTATCTAC
 GGTGCTGTTCTGTGGCCGCCAGCGCTGTACTGTCTCTGCCAGAGACCCTGGCCAGCCACTGCCAG
 ACACGGTGCAGGACCTGGAGAGCAGGTGGGCCCCCACTCAGAAAGAAGCAGGGATATATCCAGGAAAGG
 GAAACAGACGCGACAGCAACAAGAGCACCAGAAGTATATGGTCCCACTGCAGGCCTCAGCACAAGAGAAG
 AATGGACTC

ACGCGTACGCGGCCGCTCGAGCAGAAACTCATCTCAGAAGAGGATCTGGCAGCAAATGATATCCTGGATT
 ACAAGGATGACGACGATAAGGTTTAA

Protein Sequence:

>RC218568 representing NM_004790
 Red=Cloning site Green=Tags(s)

MAFNLLQQVGGVGRFQQIQVTLVVLPLLLMASHNTLQNFTAAIPTTHCRPPADANLSKNGGLEVWLPDR
 RQQQPESCLRFTSPQWGLPFLNGTEANGTGATEPCTDGWIYDNSTFPSTIVTEWDLVCSHRALRQLAQSL
 YMVGVLLGAMVFGYLAADRLGRRKVLILNYLQTAVSGTCAAFAPNFIYCAFRLLSGMALAGISLNCMTLN
 VEWMPIHTRACVGTIGYVYSLGQFLLAGVAYAVPHWRHLQLLVSAFFAFFIYSWFFIESARWHSSGR
 LDLTLRALQRVARINGKREEGAKLSMEVLRASLQKELTMGKGQASAMELLRCPTLRHLFLCLSMWFATS
 FAYYGLVMDLQGFVSIYLIQVIFGAVDLPAKLVGFLVINSLGRRPAQMAALLLAGICILLNGVIPQDQS
 IVRTSLAVLGKGLAASFNCIFLYTGELYPTMIRQTGMGMGSTMARVGSIVSPLVSMTAELYPSMPLFIY
 GAVPVAASAVTVLLPETLQPLPDTVQDLESRWAPTQKEAGIYPRKQKQTRQQQEHQKYMVPLQASAQEK
 NGL

TRTRPLEQKLISEEDLAANDILDYKDDDDKV

Restriction Sites:

Sgfl-Mlul

Cloning Scheme:



ACCN: NM_004790

ORF Size: 1689 bp

OTI Disclaimer: Due to the inherent nature of this plasmid, standard methods to replicate additional amounts of DNA in E. coli are highly likely to result in mutations and/or rearrangements. Therefore, OriGene does not guarantee the capability to replicate this plasmid DNA. Additional amounts of DNA can be purchased from OriGene with batch-specific, full-sequence verification at a reduced cost. Please contact our customer care team at custsupport@origene.com or by calling 301.340.3188 option 3 for pricing and delivery.

The molecular sequence of this clone aligns with the gene accession number as a point of reference only. However, individual transcript sequences of the same gene can differ through naturally occurring variations (e.g. polymorphisms), each with its own valid existence. This clone is substantially in agreement with the reference, but a complete review of all prevailing variants is recommended prior to use. [More info](#)

OTI Annotation: This clone was engineered to express the complete ORF with an expression tag. Expression varies depending on the nature of the gene.

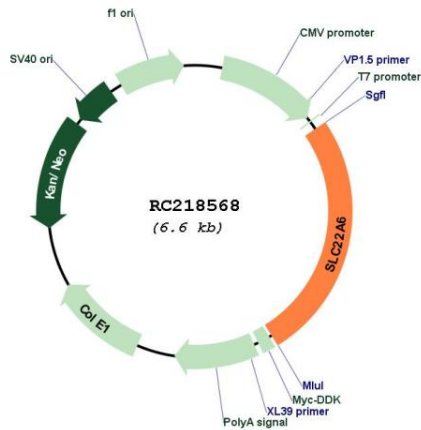
Components: The ORF clone is ion-exchange column purified and shipped in a 2D barcoded Matrix tube containing 10ug of transfection-ready, dried plasmid DNA (reconstitute with 100 ul of water).

- Reconstitution Method:
1. Centrifuge at 5,000xg for 5min.
 2. Carefully open the tube and add 100ul of sterile water to dissolve the DNA.
 3. Close the tube and incubate for 10 minutes at room temperature.
 4. Briefly vortex the tube and then do a quick spin (less than 5000xg) to concentrate the liquid at the bottom.
 5. Store the suspended plasmid at -20°C. The DNA is stable for at least one year from date of shipping when stored at -20°C.

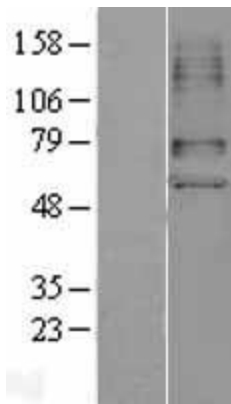
RefSeq: [NM_004790.5](#)
 RefSeq Size: 2196 bp
 RefSeq ORF: 1692 bp
 Locus ID: 9356
 UniProt ID: [Q4U2R8](#)
 Cytogenetics: 11q12.3
 Protein Families: Transmembrane
 MW: 61.6 kDa
 Gene Summary:

The protein encoded by this gene is involved in the sodium-dependent transport and excretion of organic anions, some of which are potentially toxic. The encoded protein is an integral membrane protein and may be localized to the basolateral membrane. Four transcript variants encoding four different isoforms have been found for this gene. [provided by RefSeq, Jul 2008]

Product images:



Circular map for RC218568



Western blot validation of overexpression lysate (Cat# [LY401509]) using anti-DDK antibody (Cat# [TA50011-100]). Left: Cell lysates from untransfected HEK293T cells; Right: Cell lysates from HEK293T cells transfected with RC218568 using transfection reagent MegaTran 2.0 (Cat# [TT210002]).