

## Product datasheet for **RC218567**

### **TTC39A (NM\_001080494) Human Tagged ORF Clone**

#### **Product data:**

Product Type:	Expression Plasmids
Product Name:	TTC39A (NM_001080494) Human Tagged ORF Clone
Tag:	Myc-DDK
Symbol:	TTC39A
Synonyms:	C1orf34; DEME-6
Mammalian Cell Selection:	Neomycin
Vector:	pCMV6-Entry (PS100001)
E. coli Selection:	Kanamycin (25 ug/mL)



[View online »](#)

**ORF Nucleotide Sequence:**

>RC218567 representing NM\_001080494  
 Red=Cloning site Blue=ORF Green=Tags(s)

TTTTGTAATACGACTCACTATAGGGCGGCCGGAATTCGTCGACTGGATCCGGTACCGAGGAGATCTGCC  
 GCC**CGCATCGCC**

ATGGGCCAGAAGGGCCACAAGACTCCCTTTACCTTGTGGAGGACTCCTGAGAGCAGCTCCATGAGG  
 CCCTGGACCAGTGCATGACCGCCCTGGACCTCTTCTCTACCAACCAGTTCCTCAGAAGCACTCAGCTACCT  
 CAAGCCCAGAACCAAGGAAAGCATGTACCACTCACTGACATATGCCACCATCCTGGAGATGCAGGCCATG  
 ATGACCTTTGACCCTCAGGACATCTGTCTGCGGCAACATGATGAAGGAGGCACAGATGCTGTGCAGA  
 GGCACCGGAGGAAGTCTTCTGTAACAGATTCTTCAGCAGCTGGTGAACCGCCACGCTGGGCCAATT  
 CACTGAAGAGGAAATCCACGCTGAGGTCTGCTATGCAGAGTGCCTGCTGCAGCGAGCAGCCCTGACCTTC  
 CTGCAGGACGAGAACATGGTGAAGTTCATCAAAGGCGGCATCAAAGTTCGAAACAGCTACCAGACCTACA  
 AGGAGCTGGACAGCCTTGTTCAGTCTCACAATACTGCAAGGGTGAAGACACCCGCACTTTGAAGGAGG  
 AGTGAAGCTTGGTGTAGGGGCCCTCAACCTGACACTGTCCATGCTTCTACTAGGATCCTGAGGCTGTTG  
 GAGTTTGTGGGGTTTTACAGGAAACAAGGACTATGGGCTGCTGCAGCTGGAGGAGGAGCGTCAAGGCACA  
 GCTTCCGCTCTGTGCTCTGTGTCATGCTCCTGCTGTGCTACCACACCTTCTCACCTTCGTGCTCGGTAC  
 TGGGAACGTCAACATCGAGGAGGCCGAGAAGCTCTTGAAGCCCTACCTGAACCGGTACCCTAAGGGTGCC  
 ATCTTCTGTTCTTTGCAGGGAGGATTGAAGTCATTAAGGCAACATTGATGCAGCCATCCGGCGTTTCG  
 AGGAGTGTGTGAGGCCAGCAGCACTGGAAGCAGTTCACCACATGTGCTACTGGGAGCTGATGTGGTG  
 CTTACCTACAAGGGCCAGTGAAGATGTCCTACTTCTACGCCGACCTGCTCAGCAAGGAGAAGTGTGG  
 TCCAAGGCCACCTACATTTACATGAAGGCCGCCTACCTCAGCATGTTTGGGAAGGAGGACCACAAGCCGT  
 TCGGGACGACGAAGTGAATTATTTGAGCTGTGCCAGGCTGAAGCTCAAGATTGCTGGAAATCTCT  
 ACCCACAGAGAAGTTTGCCATCCGGAAGTCCCGCGCTACTTCTCTCCAACCCTATCTCGCTGCCAGTG  
 CCTGCTCTGGAATGATGTACATCTGGAACGGCTACGCCGTGATTGGGAAGCAGCCGAAACTCACGGATG  
 GGATACTTGAGATTATCACTAAGGCTGAAGAGATGCTGGAGAAAGGCCAGAGAACGAGTACTCAGTGGA  
 TGACGAGTGTGGTGAATTTGTTGAAAGGCTGTGTCTGAAATACCTGGGCCGTGTCAGGAGGCCGAG  
 GAGAATTTAGGAGCATCTCGCAATGAAAAGAAGTAAATATGACCACTACTTGATCCCAAACGCC  
 TGCTGGAGCTGGCCCTGTGCTTATGGAGCAAGACAGAAACGAAGAGGCCATCAAACCTTTTGAATCTGC  
 CAAGCAAACTACAAGAATTACTCCATGGAGTCAAGGACACACTTCGAATCCAGGCAGCCACACTCCAA  
 GCCAAGTCTTCCCTAGAGAACAGCAGCAGATCCATGGTCTCATCAGTGTCTTTG

**ACGCGT**ACGCGGCCGCTCGAGCAGAAACTCATCTCAGAAGAGGATCTGGCAGCAAATGATATCCTGGATT  
 ACAAGGATGACGACGATAAGGTTTAA

**Protein Sequence:**

>RC218567 representing NM\_001080494  
 Red=Cloning site Green=Tags(s)

MGQKGHKDSLPCGGTPESSLHEALDQCMTALDLFLTNQFSEALSYLKPRTKESMYHSLTYATILEMQAM  
 MTFDPQDILLAGNMKEAQMLCQRHRRKSSVTDSSSLVNRPTLGQFTEEEIHAEVCYAECLLQRAALTF  
 LQDENMVSFIKGGIKVRNSYQTYKELDSLQSSQYCKGENHPHFEGGVKLVGAFNLTL SMLPTRLRL  
 EFVGFSGNKDYGLLQLEEGASGHSFRSVLCVMLLLCYHTFLT FVLGTGNVNIIEAEKLLKPYLNRYPKGA  
 IFLFFAGRIEVIKGNIDAAIRRFEECEAQQHWKQFHHMICYWELMWCFTYKQWKMSYFYADLLSKENCW  
 SKATYIYMKAAYLSMFGKEDHKPFGDDEVELFRAVPGLKLIAGKSLPTEKFAIRKSRRYFSSNPISLPV  
 PALEMMYIWNQYAVIGKQPKLTDGILEIITKAEEMLEKGPENEYSVDDECLVKLLKGLCLKYLGRVQEA  
 ENFRSISANEKIKYDHYLIPNALLELALLLMEQDRNEEAIKLLES AKQNYKNYSMESRTHFRIQAATLQ  
 AKSSLENSRSMVSSVSL

**TR**TRPLEQKLISEEDLAANDILDYKDDDDKV

**Chromatograms:**

[https://cdn.origene.com/chromatograms/ja1408\\_b04.zip](https://cdn.origene.com/chromatograms/ja1408_b04.zip)

**Restriction Sites:**

Sgfl-Mlul

**Cloning Scheme:**


**ACCN:** NM\_001080494

**ORF Size:** 1734 bp

**OTI Disclaimer:** The molecular sequence of this clone aligns with the gene accession number as a point of reference only. However, individual transcript sequences of the same gene can differ through naturally occurring variations (e.g. polymorphisms), each with its own valid existence. This clone is substantially in agreement with the reference, but a complete review of all prevailing variants is recommended prior to use. [More info](#)

**OTI Annotation:** This clone was engineered to express the complete ORF with an expression tag. Expression varies depending on the nature of the gene.

**Components:** The ORF clone is ion-exchange column purified and shipped in a 2D barcoded Matrix tube containing 10ug of transfection-ready, dried plasmid DNA (reconstitute with 100 ul of water).

- Reconstitution Method:**
1. Centrifuge at 5,000xg for 5min.
  2. Carefully open the tube and add 100ul of sterile water to dissolve the DNA.
  3. Close the tube and incubate for 10 minutes at room temperature.
  4. Briefly vortex the tube and then do a quick spin (less than 5000xg) to concentrate the liquid at the bottom.
  5. Store the suspended plasmid at -20°C. The DNA is stable for at least one year from date of shipping when stored at -20°C.

**Note:** Plasmids are not sterile. For experiments where strict sterility is required, filtration with 0.22um filter is required.

**RefSeq:** [NM\\_001080494.3](#), [NP\\_001073963.1](#)

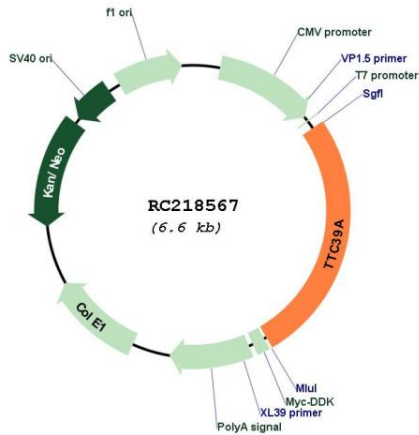
**RefSeq Size:** 2889 bp

**RefSeq ORF:** 1737 bp

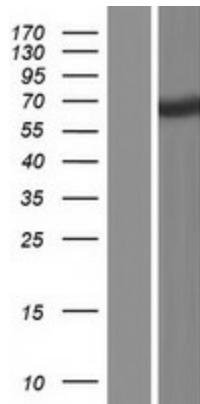
**Locus ID:** 22996

UniProt ID: [Q5SRH9](#)  
 Cytogenetics: 1p32.3  
 MW: 66 kDa

**Product images:**



Circular map for RC218567



Western blot validation of overexpression lysate (Cat# [LY421049]) using anti-DDK antibody (Cat# [TA50011-100]). Left: Cell lysates from untransfected HEK293T cells; Right: Cell lysates from HEK293T cells transfected with RC218567 using transfection reagent MegaTran 2.0 (Cat# [TT210002]).