

Product datasheet for RC218562

SLIT1 (NM_003061) Human Tagged ORF Clone

Product data:

Product Type:	Expression Plasmids
Product Name:	SLIT1 (NM_003061) Human Tagged ORF Clone
Tag:	Myc-DDK
Symbol:	SLIT1
Synonyms:	MEGF4; SLIL1; SLIT-1; SLIT3
Mammalian Cell Selection:	Neomycin
Vector:	pCMV6-Entry (PS100001)
E. coli Selection:	Kanamycin (25 ug/mL)
ORF Nucleotide Sequence:	>RC218562 representing NM_003061 Red=Cloning site Blue=ORF Green=Tags(s)

TTTTGTAATACGACTCACTATAGGGCGGCCGGGAATTCGTCGACTGGATCCGGTACCGAGGAGATCTGCC
GCC**CGATCGCC**

ATGGCGCTGACTCCCGGGTGGGGTCTCGGCGGGGCCGGTCCGGCCGGAGCTCTGGCTGCTGTGGG
CAGCCCGTGGCGCTGGGTGCCCGGCGTGCCCCGCCCTCTGCACCTGCACCGGAACCACGGTGGACTG
CCACGGCAGGGGCTGCAGGCCATTCCCAAGAATACCTCGGAACCCGAGCGCCTGGAACCAATGCG
AACACATCACTCGGATCCATAAGAATGACTTTGCGGGGCTCAAGCAGCTGCGGGTCTGCAGCTGATGG
AGAACCAGATTGGAGCAGTGAACGTGGTCTTTTATGACATGAAGGAGCTGGAGCGGCTGCGACTGAA
CCGAAACCAGCTGCACATGTTACCGGAACCTGTTCCAGAACAACCAGGCTTTGTCAAGACTGGACTTG
AGTGAGAACGCCATCCAGGCCATCCCCAGAAAGCTTTTTCGGGGAGCTACGGACCTTAAAAATTTACGGC
TGGACAAGAACCAGATCAGCTGCATTGAGGAAGGGGCTTCCGTGCTCTGCGGGGCTGGAGGTGCTGAC
CCTGAACAACAACAATACACCACCATCCCCGTGTCAGCTTCAACCATATGCCCAAGCTACGGACCTTC
CGCCTGCACTCCAACCACCTGTTTTGCGACTGCCACCTGGCTGGCTCTCGCAGTGGCTGAGGCAGCGGC
CAACCATCGGGCTCTTACCCAGTGCTCGGGCCAGCCAGCCTGCGTGGCCTCAATGTGGCAGAGGTCCA
GAAGAGTGAGTTCAGCTGCTCAGGCCAGGGAGAAGCGGGGCGGTGCCACCTGCACCCTGTCTCCGGC
TCCTGCCCGCCATGTGCACCTGCACCAATGGCATCGTGGACTGTCGTGGAAAAGGCCTCACTGCCATCC
CGGCCAACCTGCCCGAGACCATGACGGAGATACGCCTGGAGCTGAACGGCATCAAGTCCATCCCTCCTGG
AGCCTTCTCACCTACAGAAAGCTACGGAGGATAGACCTGAGCAACAATCAGATCGCTGAGATTGACCC
GACGCTTCCAGGGCCTCCGCTCCCTGAACTCGTGGTCTCTATGAAAACAAGTACAGACCTCCCCC
GTGGTGTGTTGGAGGCCTATACACCCTACAGCTCCTGCTCCTGAATGCCAACAAGATCAACTGCATCCG
GCCCGATGCCTCCAGGACCTGCAGAACCTCTCACTGCTCTCCCTGTATGACAACAAGATCCAGAGCCTC
GCCAAGGGCACTTTCACCTCCCTGCGGGCCATCCAGACTCTGCACCTGGCCAGAACCTTTCATTTGCG
ACTGTAACCTCAAGTGGTGGCAGACTTCTGCGCACCAATCCCATCGAGACGAGTGGTCCCGCTGTGC
CAGTCCCCGGCGCTCGCCAACAAGCGCATCGGGCAGATCAAGAGCAAGAAGTTCGGTCTCAGCCAA



View online »

GAGCAGTACTTCATTCCAGGCACGGAGGATTACCAGCTGAACAGCGAGTGCAACAGCGACGTGGTCTGTC
CCCACAAGTGCCGCTGTGAGGCCAACGTGGTGGAGTGCTCCAGCCTGAAGCTCACCAAGATCCCTGAGCG
CATCCCCAGTCCACGGCAGAAGTGCATTGAATAACAATGAGATTTCCATCCTGGAGGCCACTGGGATG
TTTAAAAAATTACACATCTGAAGAAAATCAATCTGAGCAACAACAAGGTGTGAGAAATTGAAGATGGGG
CCTTCGAGGGCGCAGCCTCTGTGAGCGAGCTGCACCTAACTGCCAACAGCTGGAGTCCATCCGGAGCGG
CATGTTCCGGGGTCTGGATGGCTTGAGGACCCTAATGCTGCGGAACAACCCGATCAGCTGCATCCACAAC
GACAGCTTACGGGCTCGCAACGTCCGGCTCCTCTCGTCTACGACAACCAGATCACCCGATATCCC
CAGGAGCCTTCGACACCCTCCAGTCCCTCTCCACTGAATCTCCTGGCCAACCCTTCAACTGCAACTG
CCAGCTGGCTGGCTAGGAGGCTGGCTACGGAAGCGCAAGATCGTGACGGGAACCCGCGATGCCAGAAC
CCTGACTTTTTGCGGCAGATTCCCTGCAGGACGTGGCCTTCCCTGACTTCAGGTGTGAGGAAGGCCAGG
AGGAGGGGGGCTGCCTGCCCCGCCACAGTGCCACAGGAGTGCGCTGCCTGGACACCCTGGTCCGATG
CAGCAACAAGCACCTGCGGGCCCTGCCAAGGGCATTCCAAGAATGTCACAGAAGTCTATTTGGACGGG
AACCAGTTCACGCTGGTTCGGGACAGCTGTCTACCTCAAGTACCTGCAGCTCGTGACCTGAGCAACA
ACAAGATCAGTTCCTTAAGCAATTCCTCCTTACCAACATGAGCCAGCTGACCACTCTGATCCTCAGCTA
CAATGCCCTGCAGTGCATCCCGCTTTGGCCTTCCAGGGACTCCGCTCCCTGCGCCTGCTGTCTCCAC
GGCAATGACATCTCCACCCTCCAAGAGGGCATCTTGCAGACGTGACCTCCCTGTCTCACCTGGCCATTG
GTGCCAACCCCTATACTGTGACTGCCACCTCCGCTGGCTGTCCAGCTGGGTGAAGACTGGCTACAAGGA
ACCGGGCATTGCTCGTTGTGCTGGGCCCCAGGACATGGAGGGCAAGCTGCTCCTCACCACGCTGCCAAG
AAGTTTGAATGCCAAGTCTCCAACGCTGGCTGTCCAGGCCAAGTGTGATCTCTGCTTGTCCAGTCCGT
GCCAGAACCAGGGCACCTGCCACAACGACCCCTTGAGGTGTACAGGTGCGCCTGCCACAGCGGTATAA
GGTTCGAGACTGTGAGGTGTCCCTGAACAGCTGTTCCAGTGGCCCTGTGAAAATGGGGGCACCTGCCAT
GCACAGGAGGGCGAGGATGCCCGTTACAGTGTCTGTCCACCGGCTTGAAGGACCAACCTGTGGGG
TGAACACAGATGACTGTGTGGATCATGCCTGTGCCAATGGGGCGTCTGTGTGGATGGTGTGGGCACTA
CACCTGCCAGTGGCCCTGCAGTATGAGGGAAAGGCTGTGAGCAGCTGGTGGACTTGTGCTCTCCGGAT
CTGAACCCATGTCAACACGAGGCCAGTGTGTGGGCACCCGGATGGGCCAGGTGTGAGTGCATGCCAG
GTTATGCAGGTGACAAGTGCAGTGAGAACCAGGATGACTGCAGGGACCACCGCTGCCAGAATGGGGCCA
GTGTATGGATGAAGTCAACAGCTACTCCTGCTGTGCTGAGGGCTACAGTGGACAGCTCTGTGAGATC
CCTCCCCATCTGCCTGCCCCAAGAGCCCTGTGAGGGGACTGAGTGCCAGAATGGGGCCAAGTGTGG
ACCAGGGCAACAGGCCTGTGTGCCAGTGCCTCCAGGCTTCGGTGGCCCTGAGTGTGAGAAGTTGCTCAG
TGTCAACTTTGTGGATCGGGACACTTACCTGCAGTTCAGTGCACCTGCAAACTGGCCACGGGCCAACATC
ACGTTGCAGGTCTCCACGGCAGAGGACAATGGGATCCTTCTGTACAACGGGGACAACGACCACATTCAG
TTGAGCTGTACCAGGGCCATGTGCGTGTGAGCTACGACCCAGGCAGCTACCCAGCTCTGCCATCTACAG
TGCTGAGACGATCAACGATGGGCAATTCACACCGTTGAGCTGGTTGCCTTTGACCAGATGGTGAATCTC
TCCATTGATGGCGGGAGCCCCATGACCATGGACAAGTGGCAAACTTACACGCTCAACAGCGAGGGCGC
CACTCTATGTGGGAGGGATGCCCGTGGATGTCAACTCAGTGCCTTCCGCTGTGGCAGATCCTCAACGG
CACCGGCTTCCACGGTTGCATCCGAAACCTGTACATCAACAACGAGCTGCAGGACTTCACCAAGACGCAG
ATGAAGCCAGGGTGGTCCAGGCTGCGAACCTGCCGCAAGCTACTGCCTGCATGGCATCTGCCAGC
CCAATGCCACCCAGGGCCATGTGCCACTGCGAGGCTGGCTGGTGGGCTGACTGTGACCAGCCCCG
TGACGGCCCTGCCATGGCCACAAGTGTGTCCATGGGCAATGCGTGCCCTCGACGCTCTTCTACAGC
TGCCAGTGCCAGGATGGTACTCGGGGGCACTGTGCAACCAGGCCGGGGCCTGGCAGAGCCCTGCAGAG
GCCTGCAGTGCCTGCATGGCCTGCCAGGCTCAGGCACCAAGGGGCAACTGTGTGTGACCCCGG
CTTTTCGGGCGAGCTGTGTGAGCAAGAGTCCGAGTGCCGGGGGACCCTGTCCGGGACTTTCACCAGGTC
CAGAGGGGCTATGCCATCTGCCAGACCACGCCCCCTGTGATGGGTGGAGTGCCGGGGCTCGTGCCAG
GCCAGGGTGTGCCAGGGCTTCGGCTGAAGCGGAGGAAGTTCACCTTTGAGTGCAGCGATGGGACCTC
TTTTGCCAGGAGGTGAAAAGCCCAAGTGTGGCTGTGCCCTCTGCGCA

ACGCGTACGCGGCCGCTCGAGCAGAACTCATCTCAGAAGAGGATCTGGCAGCAATGATATCCTGGATT
ACAAGGATGACGACGATAAGGTTTAA

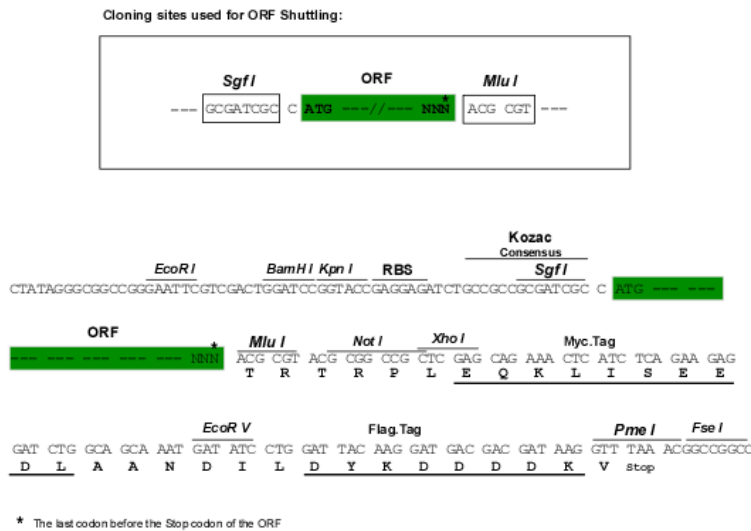
Protein Sequence: >RC218562 representing NM_003061
 Red=Cloning site Green=Tags(s)

MALTPGWGSSAGPVRPELWLLLWAAAWRLGASACPALCTCTGTTVDCHGTGLQAI PKNIPR NTERLELNG
 NNITRIHKNDFAGLKQLRVLQLMENQIGAVERGAFDDMKELERLRNRNQLHMLPELLFQNNQALSRDL
 SENAIQAI PRKAFRGATDLKNLRDKNQI SCIEE GAFRALRGLVLT LNNNNITTPVSSFNHMPKLRTF
 RLHSNHLFC DCHLAWLSQWLRQRPTIGLFTQCSGPASLRGLNVAEVQKSEFSCSGQGEAGRVPTCTLSSG
 SCPAMCTCSNGIVDCRGKGLTAIPANLPETMTEIRLELNGIKSIPP GAFSPYRKLRRIDL SNNQIAE IAP
 DAFQGLRSLNSLVLYGNKITDLPRGVFGGLYTLQLLLL NANKINCIRPDAFQDLQNL SLLSLYDNKIQSL
 AKGFTTSLRAIQTLHLAQNPFICDCNLKWLADFLRTNPIETSGARCASPRRLANKRIGQIKSKKFRCSAK
 EQYFIPGTEDYQLNSECN SDVVC PHKCRCEANVVECSSLKLTKIPERIPQSTAE LRLNNEISILEATGM
 FKKLTHLKKINL SNNKVSEIEDGAFEGAASVSELHLTANQLESIRSGMFRGLDGLRTLMLRNNRISCIHN
 DSFTGLRNVRLLSLYDNQITTVSPGAFDTLQSLSTLNL LANPFCNCQLAWLGGWLRKRKIVTGNPRCQN
 PDFLRQIPLQDVAFPDFRCEEGQE EGGCLPRPQCPOEACLDTVVRC SNKHLRALPKGIPKNVTELYLDG
 NQFTLVPGQLSTFKYLQV DLSNNKISSLSNSSFTNMSQLTTLILSYNALQCIPPLAFQGLRSLRLLSLH
 GNDISTLQEGIFADVTSLSHLAIGANPLYCDCHLRWLSWVKTYGKEPGIARCAGPQDMEGKLLLTTPAK
 KFECQGPPTLAVQAKCDLCLSSPCQNQGTCHNDPLEVYRCACPSGYKGRDCEVSLNSC SSGPCENGGTCH
 AQEGEDAPFTCSCTPFEGPTCGVNTDDCVDHACANGGVCVDGVGN YTCQCP LQYEGKACEQLVDLCSPD
 LNPCQHEAQCVGTPDGPRCECM PGYAGDNCS ENQDDCRDHR CQNGAQCMDEVNSY SCLCAEGYSGQLCEI
 PPHLPAPKSPCEGTECQNGANCVDQGNRPVCQCLPGFGGPECEKLLSVNFVDRD TYLQFTDLQNWPRANI
 TLQVSTAEDNGILLYNGDNDHIAVELYQGHVRSYDPSYPSAIYSAETINDGQFHTVELVAFDQMVNL
 SIDGGSPMTMDNF GKHYTLNSEAPLYVGGMPVDVNSAAFRLWQILNGTGFHGCIRNLYINNELQDFTKTQ
 MKPGVVPGEPCPRKLYLHGICQPNATPGPMCHCEAGWVGLHCDQPADG PCHGHKCVHGQCVPLDALSYS
 CQCQDGYSGALCNQAGALAEPCRGLQCLHGHCQASGTGKAHCVCDPGFSGELCEQESECRGDPVRDFHQV
 QRGYAIACQTTRPLSWVECRGSCPGQCCQLRLKRRKFTFECSDGTSFAEEVEKPTKCGCALCA

TRTRPLEQKLISEEDLAANDILDYKDDDDKV

Restriction Sites: SgfI-MluI

Cloning Scheme:

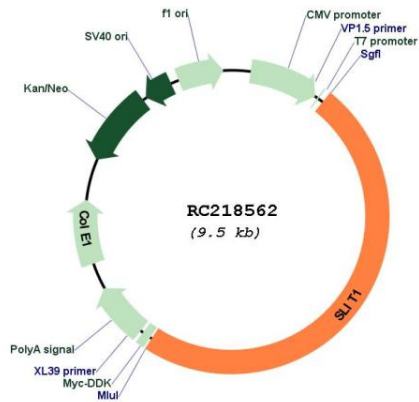


ACCN: NM_003061

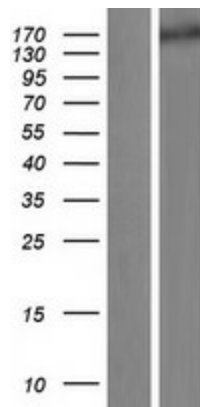
ORF Size: 4602 bp

OTI Disclaimer:	The molecular sequence of this clone aligns with the gene accession number as a point of reference only. However, individual transcript sequences of the same gene can differ through naturally occurring variations (e.g. polymorphisms), each with its own valid existence. This clone is substantially in agreement with the reference, but a complete review of all prevailing variants is recommended prior to use. More info
OTI Annotation:	This clone was engineered to express the complete ORF with an expression tag. Expression varies depending on the nature of the gene.
Components:	The ORF clone is ion-exchange column purified and shipped in a 2D barcoded Matrix tube containing 10ug of transfection-ready, dried plasmid DNA (reconstitute with 100 ul of water).
Reconstitution Method:	<ol style="list-style-type: none">1. Centrifuge at 5,000xg for 5min.2. Carefully open the tube and add 100ul of sterile water to dissolve the DNA.3. Close the tube and incubate for 10 minutes at room temperature.4. Briefly vortex the tube and then do a quick spin (less than 5000xg) to concentrate the liquid at the bottom.5. Store the suspended plasmid at -20°C. The DNA is stable for at least one year from date of shipping when stored at -20°C.
Note:	Plasmids are not sterile. For experiments where strict sterility is required, filtration with 0.22um filter is required.
RefSeq:	NM_003061.1 , NP_003052.1
RefSeq Size:	5094 bp
RefSeq ORF:	4605 bp
Locus ID:	6585
UniProt ID:	O75093
Cytogenetics:	10q24.1
Protein Families:	Druggable Genome
Protein Pathways:	Axon guidance
MW:	167.7 kDa
Gene Summary:	Thought to act as molecular guidance cue in cellular migration, and function appears to be mediated by interaction with roundabout homolog receptors. During neural development involved in axonal navigation at the ventral midline of the neural tube and projection of axons to different regions (By similarity). SLIT1 and SLIT2 together seem to be essential for midline guidance in the forebrain by acting as repulsive signal preventing inappropriate midline crossing by axons projecting from the olfactory bulb.[UniProtKB/Swiss-Prot Function]

Product images:



Circular map for RC218562



Western blot validation of overexpression lysate (Cat# [LY418922]) using anti-DDK antibody (Cat# [TA50011-100]). Left: Cell lysates from untransfected HEK293T cells; Right: Cell lysates from HEK293T cells transfected with RC218562 using transfection reagent MegaTran 2.0 (Cat# [TT210002]).