

Product datasheet for **RC218557**

ANO4 (NM_178826) Human Tagged ORF Clone

Product data:

Product Type:	Expression Plasmids
Product Name:	ANO4 (NM_178826) Human Tagged ORF Clone
Tag:	Myc-DDK
Symbol:	ANO4
Synonyms:	TMEM16D
Mammalian Cell Selection:	Neomycin
Vector:	pCMV6-Entry (PS100001)
E. coli Selection:	Kanamycin (25 ug/mL)



[View online »](#)

ORF Nucleotide Sequence:

>RC218557 representing NM_178826
 Red=Cloning site Blue=ORF Green=Tags(s)

TTTTGTAATACGACTCACTATAGGGCGGCCGGAATTCGTCGACTGGATCCGGTACCGAGGAGATCTGCC
 GCC**CGCATCGCC**

ATGGAGGCAAGCTCTTCTGGAATCACTAATGAAAAACAAAGTCTTCCACCCAGTGGCCAAGGATGTCA
 ATATTCCTTTTGTGAATTAGAAGCTGTGACAGTCCTTGCAAAGATGACGATTCTTCTTCCACCTGG
 AAACCTGACTAGTACTTCAAGATGATGCCAGCAGATTGGAAGCCGGGGGAGAGACAGTGCCAGAAAAGAAC
 AAATCAAATGGACTTTACTTTGAGATGAAAAGTGTGCAATTGACTACATCCTTGTGTACAGAAAATCCA
 ACCCCCAGACTGAAAAGAGAGAAGTATTTGAAAGAAACATTAGAGCAGAAGGATTGCAAATGGAGAAAAGA
 GTCCTCTAATAAATAGTGACATTATCTTTGTGAAGTTGCATGCCCCATGGGAAGTCTTGGAAAGATAT
 GCAGAACAATGAATGTAAGAATGCCTTTCAGGAGAAAAATCTATTACCTGCCCCCGCTTACAAGTTCA
 TGAGCAGGATCGATAAACAAATAAGCAGGTTTCGGAGATGGTTACCTAAGAAGCCAATGAGGCTGGACAA
 GGAGACTGCCAGACCTGGAGGAGAATGACTGCTACACTGCCCTTTCAGCCAGCAAAGGATCCATCAC
 TTCATCATACACAACAAAGAAACGTTCTTCAACAATGCCACAAGAAGTAGAATCGTGCATCACATTTTAC
 AAAGAATAAAATATGAAGAAGGAAAAACAAGATTGGTCTGAATCGTTTGCTTACCAATGGCTCCTATGA
 AGCTGCGTTTCCCTGCATGAGGGAAGTTATAGAAGTAAAAACTCCATTGCAACCCATGGAGCAGAAAAC
 CACCGACATCTACTCTATGAGTGTGGGCTCCTGGGCGGTGGTATAAATACCAACCTTTGGATCTTG
 TAAGGCGTACTTTGGAGAGAAGATTGGGTTATATTTGCCTGGTTGGGCTGGTACACCGGCATGCTCTT
 CCCAGCTGCCTTCAATGGATTGTTTGTCTTTTGTATGGCGTCAACACTCGGATCACAGCCAAGTCAGT
 AAAGAAGTCTGCCAAGCTACAGATATCATATGTGCTGTGTGTGATAAATACTGTCCATTCATGAGGC
 TGTGACAGCTGTGTATATGCCAAGGTAACCCACCTTTTTGACAAATGGAGCCACTGTCTTCTTTGCTGT
 TTTTCATGGCAGTCTGGGCAACAGTTTTCTGGAGTTTTGGAAAAGACGGCGAGCAGTAATTGCTTATGAC
 TGGGATTTGATAGACTGGGAAGAAGAGGAGGAAGAAATACGACCCAGTTTGAAGCCAAGTATTCCAAGA
 AAGAGCGGATGAATCCAATTTCTGGAAAGCCAGAACCTTATCAAGCATTACAGATAAATGCAGCAGACT
 TATCGTTTCTGCATCTGGAATATTTTTATGATCTGCGTGGTATTGCTGCCGTGTTCCGGATCGTCATT
 TACCGGTTGGTACTGTCAGCACTTTGCTGCCTTAAAGTGGGCGTTAATCAGGAATAACTCTCAGGTTG
 CAACCACAGGACTGCTGTGTGCATCAACTTCTGTATCATTATGTTGCTGAATGTGCTCTATGAAAAAGT
 TGCCCTGCTTCTGACGAATTTAGAACAGCTCGCACAGAGTCTGAGTGGGAGAACAGCTTACCCTGAAA
 ATGTTTCTTTTTCAGTTTGTCAATCTGAACAGCTCCACATTTTACATCGCATTCTTCTCGGAAGATTTA
 CAGGACACCCAGGTGCCTACTTGAGGCTGATAAACAGGTGGAGACTAGAAGAGTGCCACCCTAGTGGATG
 CCTTATTGATCTGTGATGCAAATGGGTATTATAATGGTCTAAAAGCAGACCTGGAATAATTTTCATGGAA
 CTTGGCTACCCGTTAATTCAGAATTTGGTGGACTAGAAGAAAAGTACGACAAGAACATGGACCTGAAAGGA
 AAATAAGTTTCCACAATGGGAAAAGGACTATAACCTTCAGCCGATGAATGCCTATGGACTCTTCGATGA
 ATACTTAGAAATGATTCTTCAGTTTGGATTCACTACTTCTTGTGGCAGCTTTTCCCTAGCACCCTT
 CTGGCCTTACTGAATAACATAATTGAAATTCGACTTGATGCTTACAAATTTGTACACAGTGGAGGAGAC
 CTTTAGCTTCAAGGCAAGACATAGGAATTTGGTATGGAATCTTGAAGGCATTGGAATCTCTCTGT
 TATCACAAATGCATTTGTATAGCGATAACATCTGACTTTATCCCTCGCTTGGTGTATGCTTATAAGTAT
 GGACCTTGTGCAGGCCAAGGAGAAGCTGGGCAAAAGTGCATGGTTGGCTATGTGAATGCCAGCTTGTCTG
 TATTTGCAATTTCTGACTTTGAGAACCGATCTGAGCCTGAATCTGATGGCAGTGAGTTCTCGGGACTCC
 TCTTAAGTACTGCAGATACCGGACTACCGTGACCCGCTCATTCACTGGTGCCTATGGCTACACACTG
 CAGTTTGGCATGCTAGTGTCTGATTAGCTTTTATCATTGTCTTTGAGCACCTCGTGTTTTGTATAA
 AGCACCTCATTTATCTGATCCAGACCTCCAAAAGACCTAAGGGATCGAATGAGAAGAGAGAAGTA
 CTTGATTCAGGAGATGATGATGAAGCAGAAGTGAACGCTCTCCAGAAGGAACGAAAGGAGAGGAAGAAG
 AATGAAAAGCACACCACAACGAGTGGCCG

ACGCGTACGCGGCCGCTCGAGCAGAAACTCATCTCAGAAGAGGATCTGGCAGCAAATGATATCCTGGATT
 ACAAGGATGACGACGAT AAGGTTTAA

Protein Sequence: >RC218557 representing NM_178826
 Red=Cloning site Green=Tags(s)

```
MEASSSGITNGKTKVFPVAKDVNILFDELEAVSSPCKDDDSLHPGNLTSTSDASRLEAGGETVPERN
KSNGLYFRDGKCRIDYILVYRKSNPQTEKREVFERNIRAEGLOMEKESSLINSDIIFVKLHAPWEVLGRY
AEQMNVRMPFRRKIYYLPRRYKFMSTRIDKQISRFRWLPKKPMRLDKETLPDLEENDCYTAPFSQQR1HH
FIIHNKETFFNNA TRSRIVHHILQRIKYEEGKNKIGLNRLLTNGSYEAAPLHEGSYRSKNSIRTHGAEN
HRHLLYECWASWGVWYKYQPLDLVRRYFGEKIGLYFAWLGWYTGMLFPAAFI GLFVFLYGVTTLDHSQVS
KEVCQATDIIMCPVCDKYCPFMRLSDSCVYAKVTHLFDNGATVFFAVFMAVWATVFLFVWKRRAVIAID
WDLIDWEEEEEEIRPQFEAKYSKKERMNPI SGKPEPYQAFDCKSRLIVSASGIFFMICVIAAVFGIVI
YRVVTVSTFAAFKWALIRNNSQVATTGTAVCFIIMLLNVLYEKVALLLTNLEQPRTESEWENSFTLK
MFLFQFVNLSSTFYIAFFLGRFTGHPGAYLR LINRWLEECHPSGCLIDLCMQMGIIMVLKQTWNNFME
LGYP LIQNWWRKVRQEHGPERKISFPQWEKDYNLQPMNAYGLFDEYLEMILQFGFTTIFVAAFPLAPL
LALLNNIIEIRLDAYKFVTQWRPLASRAKDIGI WYGILEGIGILSVITNAFVIAITSDFIPRLVYAYKY
GPCAGQGEAGQCMVGYVNASLSVFRISDFENRSEPE SDGSEFSGTPLKYCRYRDRDPHSLVPYGYTL
QFHWVLAARLAFIIVFEHLVFCIKHLISYLIPDLPKDLRDRMRREKYL IQEMMYEAELERLQKERKERK
NGKAHNEWP
```

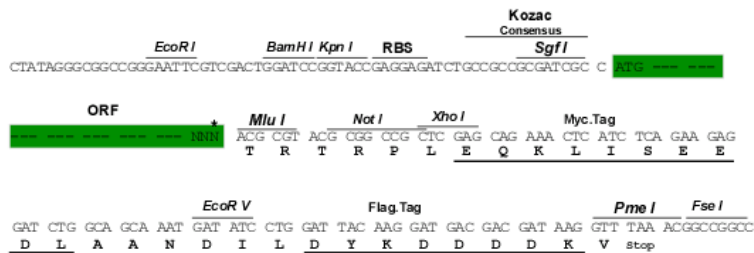
TRTRPLEQKLISEEDLAANDILDYKDDDDKV

Chromatograms: https://cdn.origene.com/chromatograms/mk8119_g07.zip

Restriction Sites: SgfI-MluI

Cloning Scheme:

Cloning sites used for ORF Shuttling:



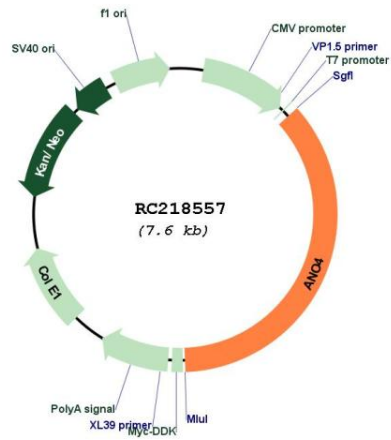
* The last codon before the Stop codon of the ORF

ACCN: NM_178826

ORF Size: 2760 bp

OTI Disclaimer:	The molecular sequence of this clone aligns with the gene accession number as a point of reference only. However, individual transcript sequences of the same gene can differ through naturally occurring variations (e.g. polymorphisms), each with its own valid existence. This clone is substantially in agreement with the reference, but a complete review of all prevailing variants is recommended prior to use. More info
OTI Annotation:	This clone was engineered to express the complete ORF with an expression tag. Expression varies depending on the nature of the gene.
Components:	The ORF clone is ion-exchange column purified and shipped in a 2D barcoded Matrix tube containing 10ug of transfection-ready, dried plasmid DNA (reconstitute with 100 ul of water).
Reconstitution Method:	<ol style="list-style-type: none">1. Centrifuge at 5,000xg for 5min.2. Carefully open the tube and add 100ul of sterile water to dissolve the DNA.3. Close the tube and incubate for 10 minutes at room temperature.4. Briefly vortex the tube and then do a quick spin (less than 5000xg) to concentrate the liquid at the bottom.5. Store the suspended plasmid at -20°C. The DNA is stable for at least one year from date of shipping when stored at -20°C.
Note:	Plasmids are not sterile. For experiments where strict sterility is required, filtration with 0.22um filter is required.
RefSeq:	NM_178826.4
RefSeq Size:	4142 bp
RefSeq ORF:	2763 bp
Locus ID:	121601
UniProt ID:	Q32M45
Cytogenetics:	12q23.1
Protein Families:	Transmembrane
MW:	108.1 kDa
Gene Summary:	Has calcium-dependent phospholipid scramblase activity; scrambles phosphatidylserine, phosphatidylcholine and galactosylceramide (By similarity). Does not exhibit calcium-activated chloride channel (CaCC) activity (By similarity).[UniProtKB/Swiss-Prot Function]

Product images:



Circular map for RC218557