

## Product datasheet for **RC218548**

### **XKR4 (NM\_052898) Human Tagged ORF Clone**

#### **Product data:**

Product Type:	Expression Plasmids
Product Name:	XKR4 (NM_052898) Human Tagged ORF Clone
Tag:	Myc-DDK
Symbol:	XKR4
Synonyms:	XRG4
Mammalian Cell Selection:	Neomycin
Vector:	pCMV6-Entry (PS100001)
E. coli Selection:	Kanamycin (25 ug/mL)



[View online »](#)

**ORF Nucleotide Sequence:**

>RC218548 representing NM\_052898  
 Red=Cloning site Blue=ORF Green=Tags(s)

TTTTGTAATACGACTCACTATAGGGCGGCCGGAATTCGTCGACTGGATCCGGTACCGAGGAGATCTGCC  
 GCC**CGCATCGCC**

ATGGCCGCTAAATCAGACGGGAGGCTGAAAATGAAGAAAAGCAGCGACGTGGCGTTCACCCCGCTGCAGA  
 ACTCGGACCACTCGGGCTCGGTGCAGGGATTGGCTCCAGGCTTCCGTCGCGGGTTCGGGAGCCGAGGACGA  
 GGAGGCGGCCGGGGCGGCTGCTGCCCGCAGCGCGCGGCTGCTCGCGCTGCTGTGCTGCTGCGCCGGG  
 AGTGGCGGCTCCGCGGGCTCGGGCGGCTCCGGCGGCTCGCCGGCCCGGGCGGCGGGCGGGGCTCGG  
 CTGCGCTGTGCCTGCGCCTGGGACGGGAGCAGCGCGCTACTCACTGTGGGACTGCCTCTGGATCCTGGC  
 CGCCGTGGCCGTGACTTCGCGGACGTGGGCACAGACGTCTGGCTCGCCGTGGACTACTCTGCGCGGC  
 CAGCGTGGTGGTTCGGGCTCACGCTCTTCTTCGTGGTGTCTGGCTCTGTGCGGTGCAAGTGTTCAGT  
 TCCGCTGGTTTGTGCACGATTCAGCACCGAGGACAGCGCCACGGCCGCTGCTGCCTCCAGCTGCCCGCA  
 GCCTGGAGCCGATTGCAAGACGGTGGTCCGGCGGTGGGTCTGCAGCCGGGAAGGCAGGCTCGTCTCTCC  
 ACGCCGCAAAAGGCAAGCATCTAACGCCAGCAAGAGCAACATCGCCGCGGCCAACAGCGGCAGCAACAGCA  
 GCGGGGCTACCCGGGCCAGTGGCAAGCACAGGTCTGCGTCTGCTCTTCTGCATCTGGCTCCTGCAGTC  
 ACTCATCCACATCTTGCAGCTCGGGCAAATCTGGAGATATTTCCACACAATACTTAGGTATTCGAAGC  
 CGACAGAGTGGGAGAATGACAGATGGAGGTTTTACTGGAAAAATGGTATATGAGTATGCGGATGTGAGTA  
 TGCTGCATTTGTAGCCACCTTTCTGAAAAGTGTCCACAGCTGGTCTGCAGCTCTGCATTATCGTACA  
 GACTCATAGCTTACAGGCCCTCCAAGTTTTACAGCGGCAGCTTCCCTCGTGTCCCTGGCCTGGGCTTGG  
 GCCTCTACCAGAAGGCCCTCCGGGACTCTCGAGATGACAAGAAGCCCATCAGCTACATGGCCGTCATCA  
 TCCAGTTCTGCTGGCATTCTTACCATCGCCGCCAGGGTCATCACGTTTGCCCTTTTGCCTCGGTTTT  
 CCAGCTGTACTTTGGGATCTTCATCGTCTTCACTGGTGCATCATGACCTTCTGGATCGTCCACTGTGAG  
 ACAGAATTCTGTATCACCAAATGGGAAGAGATTGTGTTGACATGGTGGTGGGATTATCTATATCTTCA  
 GTTGGTTCAATGTCAAGGAAGGCAGGACACGCTGCAGGCTATTCATTTACTATTTTGTGATCCTTTTGG  
 AAATACAGCCTTGAGTGCCTCTGGTACCTCTACAAGGCTCCCCAGATTGCAGACGCATTTGCCATTCCA  
 GCGCTGTGTGGTGTTCAGCAGCTTTTTAACTGGCGTTGTTTTATGCTGATGTATTATGCCTTCTTTC  
 ATCCCAATGGACCAGATTGGGACGTCACCAAGTTGTGCTTGTGAGGACCCAGCCGCTGCCTTCACTTT  
 GCCCCAGACGTGGCCACAAGCACCTACGGTCCATCTCCAACAACCGCAGTGTGTCAGCGACCCGGAT  
 CAGAAATTCGAGAGCGGATGGGTGTGTACCTGTCTTTCAAGTGAAGCCACTGCCCATCCACCCAT  
 CATCTCGCCACCACGGATTGAAGAATCAGTCATTAATAATTGACTTGTTCAGGAATAGGTACCCAGCATG  
 GGAGAGACATGTTTTGGACCGAAGCCTCCGAAAGGCTATTTTAGCTTTTGAATGTTCCCATCTCTCTCCA  
 AGGCTGCAGTACAAAGATGATGCCCTTATTCAGGAGCGGTTGGAGTACGAAACCCTTTA

**ACGCGT**ACGCGGCCGCTCGAGCAGAAACTCATCTCAGAAGAGGATCTGGCAGCAAATGATATCCTGGATT  
 ACAAGGATGACGACGATAAGGTTTAA

**Protein Sequence:** >RC218548 representing NM\_052898  
Red=Cloning site Green=Tags(s)

```

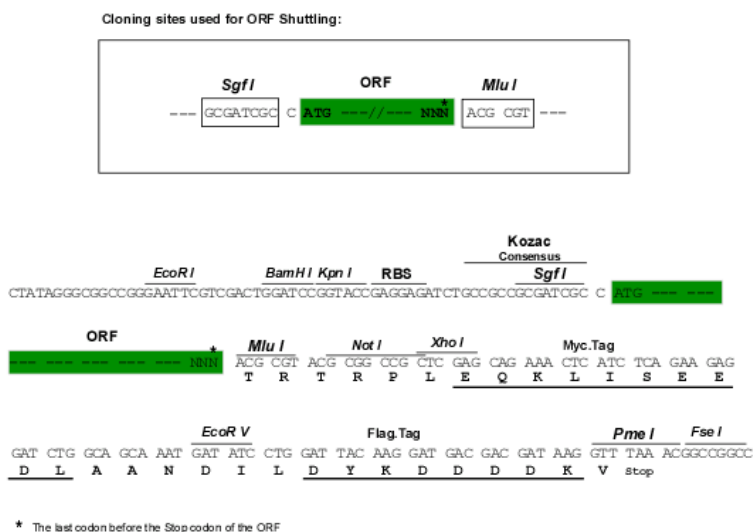
MAAKSDGRLKMKKSSDVAFVPLQNSDHSGSVQGLAPGLPSGSGAEDEEAAGGGCCPDGGGCSRCCCCAG
SGGSAGSGGGVAGPGGGGAGSAALCLRLGREQRRYSLWDCLWILAAVAVYFADVGTDVWLAVDYLRG
QRWWFGLTLFFVVLGSLVQVFSFRWFVHDFSTEDSATAAAASSCPQPGADCKTVVGGGSAAGEGEARPS
TPQRQASNASKSNIAAANSNGSNSSGATRASGKHSASCSFCIWLQLSLIHILQLGQIWRVFHTIYLGIRS
RQSGENDRWFYWKMVYEYADVSMHLHLATFLESAPQLVLQLCIIVQTHSLQALQGFATAASLVSLAWAL
ASYQKALRDSRDDKKPISYMAVIIQFCWHFFIIAARVITFALFASVFQLYFGIFIVLHWCIMTFWIHCE
TEFCITKWEIIVFDMVVGIIYIFSWFNVKEGRTRCRLFIIYFVILLENLALWYLYKAPQIADAFaip
ALCVVSSFLTGVVFMYYAFFHPNGPRFGQSPSCACEDPAAAFVLPDVATSTLRSISNNRSVSDRD
QKFAERDGCVPVQVRPTAPSTPSSRPRIEESVIKIDLFRNRYPAWERHVLDRSLRKAILAFECSPSP
RLQYKDDALIQRLEYETTL
    
```

TRTRPLEQKLISEEDLAANDILDYKDDDDKV

**Chromatograms:** [https://cdn.origene.com/chromatograms/mk8104\\_d10.zip](https://cdn.origene.com/chromatograms/mk8104_d10.zip)

**Restriction Sites:** SgfI-MluI

**Cloning Scheme:**



**ACCN:** NM\_052898

**ORF Size:** 1950 bp

**OTI Disclaimer:** The molecular sequence of this clone aligns with the gene accession number as a point of reference only. However, individual transcript sequences of the same gene can differ through naturally occurring variations (e.g. polymorphisms), each with its own valid existence. This clone is substantially in agreement with the reference, but a complete review of all prevailing variants is recommended prior to use. [More info](#)

**OTI Annotation:** This clone was engineered to express the complete ORF with an expression tag. Expression varies depending on the nature of the gene.

**Components:** The ORF clone is ion-exchange column purified and shipped in a 2D barcoded Matrix tube containing 10ug of transfection-ready, dried plasmid DNA (reconstitute with 100 ul of water).

**Reconstitution Method:**

1. Centrifuge at 5,000xg for 5min.
2. Carefully open the tube and add 100ul of sterile water to dissolve the DNA.
3. Close the tube and incubate for 10 minutes at room temperature.
4. Briefly vortex the tube and then do a quick spin (less than 5000xg) to concentrate the liquid at the bottom.
5. Store the suspended plasmid at -20°C. The DNA is stable for at least one year from date of shipping when stored at -20°C.

**Note:** Plasmids are not sterile. For experiments where strict sterility is required, filtration with 0.22um filter is required.

**RefSeq:** [NM\\_052898.2](#)

**RefSeq Size:** 3925 bp

**RefSeq ORF:** 1953 bp

**Locus ID:** 114786

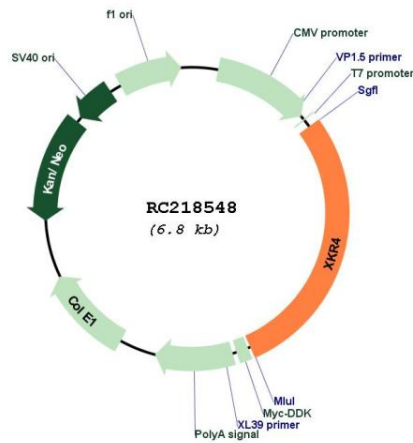
**UniProt ID:** [Q5GH76](#)

**Cytogenetics:** 8q12.1

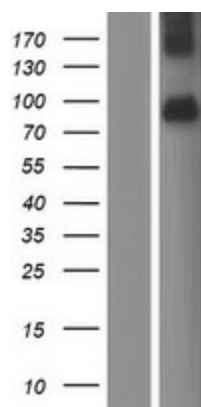
**Protein Families:** Transmembrane

**MW:** 71.5 kDa

### Product images:



Circular map for RC218548



Western blot validation of overexpression lysate (Cat# [LY409412]) using anti-DDK antibody (Cat# [TA50011-100]). Left: Cell lysates from untransfected HEK293T cells; Right: Cell lysates from HEK293T cells transfected with RC218548 using transfection reagent MegaTran 2.0 (Cat# [TT210002]).