

Product datasheet for **RC218543**

TAS1R2 (NM_152232) Human Tagged ORF Clone

Product data:

Product Type:	Expression Plasmids
Product Name:	TAS1R2 (NM_152232) Human Tagged ORF Clone
Tag:	Myc-DDK
Symbol:	TAS1R2
Synonyms:	GPR71; T1R2; TR2
Mammalian Cell Selection:	Neomycin
Vector:	pCMV6-Entry (PS100001)
E. coli Selection:	Kanamycin (25 ug/mL)



[View online »](#)

ORF Nucleotide Sequence:

>RC218543 representing NM_152232
 Red=Cloning site Blue=ORF Green=Tags(s)

TTTTGTAATACGACTCACTATAGGGCGGCCGGGAATTCGTCGACTGGATCCGGTACCGAGGAGATCTGCC
 GCC**CGGATCGCC**

ATGGGGCCAGGGCAAAGACCATCTGCTCCCTGTTCTTCCCTCCTATGGGTCTGGCTGAGCCGGCTGAGA
 ACTCGGACTTCTACCTGCCTGGGATTACCTCCTGGGTGGCCTTCTCCCTCCATGCCAACATGAAGGG
 CATTGTTACCTTAACTTCTGCAGGTGCCATGTGCAAGGAGTATGAAGTGAAGGTGATAGGCTACAAC
 CTCATGCAGGCCATGCGCTTCGCGGTGGAGGAGATCAACAATGACAGCAGCCTGCTGCCTGGTGTGCTGC
 TGGGCTATGAGATCGTGGATGTGTGCTACATCTCCAACAATGTCCAGCCGGTGTCTACTTCTGGCACA
 CGAGGACAACCTCCTTCCATCCAAGAGGACTACAGTAACTACATTTCCCGTGTGGTGGCTGTCATTGGC
 CCTGACAACCTCGAGTCTGTCATGACTGTGGCCAACTTCTCTCCCTATTTCTCCTTCCACAGATCACCT
 ACAGCGCCATCAGCGATGAGCTGCGAGACAAGGTGCGCTTCCCGCTTTGCTGCGTACCACACCCAGCGC
 CGACCACCAGTGCAGGCCATGGTGCAGCTGATGCTGCACCTCCGCTGGAAGTGGATCATTGTGCTGGT
 AGCAGCGACACCTATGGCCGCGACAATGGCCAGCTGCTTGGCGAGCGCGTGGCCCGCGCGACATCTGCA
 TCGCCTTCCAGGAGACGCTGCCACACTGCAGCCAAACAGAACATGACGTGACAGGAGCGCCAGCGCCT
 GGTGACCATTTGTGGACAAGCTGCAGCAGAGCACAGCGCGCTCGTGGTCTGTTCTCGCCGACCTGACC
 CTGTACCACTTCTCAATGAGGTGCTGCGCCAGAACTTACGGGCGCCGTGTGGATCGCCTCCGAGTCTT
 GGGCCATCGACCCGGTCTGCACAACCTCACGGAGCTGGGCCACTTGGGCACCTTCTGGGCATCACCAT
 CCAGAGCGTGGCCATCCCGGGCTTCAGTGAGTTCCGCGAGTGGGGCCACAGGCTGGGCCGCCACCCCTC
 AGCAGGACCAGCCAGAGCTATACCTGCAACCAGGAGTGCAGAACTGCCTGAACGCCACCTTGTCTTTCA
 ACACCATCTCAGGCTCTCTGGGGAGCGTGTCTGTCTACAGCGTACTCTGCGGTCTATGTGTGGCCCA
 TGCCCTGCACAGCTCCTCGGCTGTGACAAAAGCACCTGCACCAAGAGGGTGGTCTACCCCTGGCAGCTG
 CTTGAGGAGATCTGGAAGGTCAACTTCACTCTCCTGGACCACCAATCTTCTCGACCCGAAGGGGACG
 TGGCTCTGCACTTGGAGATTGTCCAGTGGCAATGGGACCGGAGCCAGAATCCCTTCCAGAGCGTCGCTC
 TACTACCCCTGCAGCGACAGCTGAAGAACATCCAAGACATCTCCTGGCACACCGTCAACAACACGATC
 CCTATGTCCATGTGTTCCAAGAGGTGCCAGTCAAGGCAAAAGAAGAAGCCTGTGGGCATCCACGTCTGCT
 GCTTCGAGTGCATCGACTGCCTTCCCGCACCTTCTCAACCACACTGAAGATGAATATGAATGCCAGGC
 CTGCCCGAATAACGAGTGGTCTACCAGAGTGAGACCTCCTGCTTCAAGCGGCAGCTGGTCTTCTGGAA
 TGGCATGAGGCACCCACCATCGCTGTGGCCCTGTGGCCGCCCTGGGCTTCTCAGCACCTGGCCATCC
 TGGTGATATTCTGGAGGCACTTCCAGACACCCATAGTTCGCTCGGCTGGGGGCCCATGTGCTTCTGAT
 GCTGACACTGCTGCTGGTGGCATAACATGGTGGTCCCGGTGTACGTGGGGCCGCCAAGGTCTCCACCTGC
 CTCTGCCGCCAGGCCCTTTCCCTCTGCTTCACAATTTGCATCTCCTGTATCGCGTGCCTTCTTTCC
 AGATCGTCTGCGCCTTCAAGATGGCCAGCCGCTTCCCACGCGCCTACAGCTACTGGGTCCGCTACCAGGG
 GCCCTACGTCTCTATGGCATTATCACGGTACTCAAAATGGTCATTGTGGTAATTGGCATGCTGGCCAGC
 GGCCTCAGTCCCACCACCCGACTGACCCCGATGACCCCAAGATCACAATGTCTCCTGTAACCCCAACT
 ACCGCAACAGCCTGCTGTTCAACACCAGCCTGGACCTGCTGCTCTCAGTGGTGGGTTTCAGCTTCGCCTA
 CATGGGCAAAGAGCTGCCCAACTACAACGAGGCCAAGTTCATCACCCCTCAGCATGACCTTCTATTTCT
 ACCTCATCCGCTCCCTCTGCACCTTATGTCTGCCTACAGCGGGTGTGGTCAACATCGTGGACCTCT
 TGGTCACTGTGCTCAACCTCCTGGCCATCAGCCTGGGCTACTTCCGCCCAAGTGTACATGATCTCTT
 CTACCCGGAGCGCAACACGCCCGCTACTTCAACAGCATGATCCAGGGCTACACCATGAGGAGGGAC

ACGCGTACGCGGCCGCTCGAGCAGAACTCATCTCAGAAGAGGATCTGGCAGCAATGATATCCTGGATT
 ACAAGGATGACGACGATAAGGTTTAA

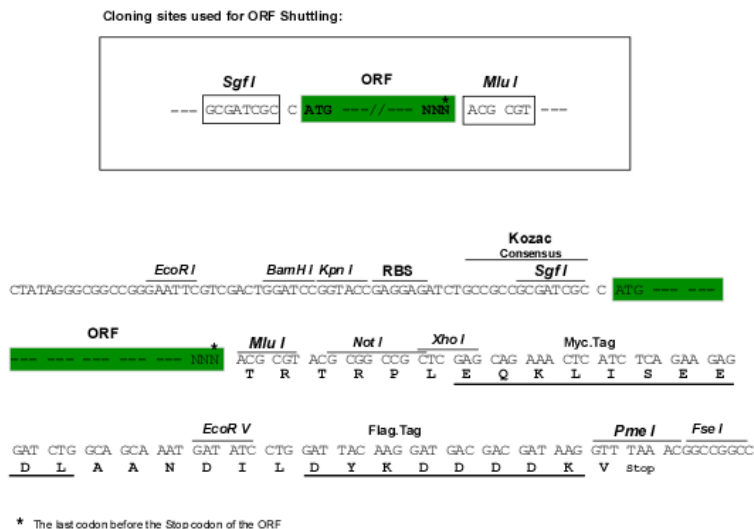
Protein Sequence: >RC218543 representing NM_152232
Red=Cloning site Green=Tags(s)

MGPRAKTICSLFFLLWVLAEPAENSDFYLPGDYLLGGLFSLHANMKGIVHLNFLQVPMCKEYEVKVIQYN
LMQAMRFAVEEINNDSLLPGVLLGYEIVDVCYISNNVQPVLFLAHEDNLLPIQEDYSNYISRVVAVIG
PDNSESVMTVANFLSLFLLPQITYSAISDELKVRFPALLRTPSADHHVEAMVQLMLHFRWNWIIVLV
SSDTYGRDNGQLLGERVARRDICIAFQETLPTLQPNQNTSEERQLVTIVDKLQSTARVVVVFSPDLT
LYHFFNEVLRQNFAGAVWIASESWAIDPVLHNLTELGHLGTFLGITIQSVPIPGFSEFREWGPQAGPPPL
SRTSQSYTCNQECDNCLNATLSFNTILRLSGERVVYSVYSAVYAVAHALHSLGCDKSTCTKRVVYPWQL
LEEIWKVNFTLLDHQIFFDPQGDVALHLEIVQWQWDRSQNPFSVASYYPLQRQLKNIQDISWHTVNNTI
PMSMCSKRCQSGQKKKPVGIHVCCFECIDCLPGTFLNHTEDEYECQACPNNEWSYQSETSCFKRQLVFLE
WHEAPTI AVALLAALGFLSTLAILVIFWRHFQTPIVRSAGGPMCFLMLTLLLVAYMVPVYVGGPKVSTC
LCRQALFPLCFTICISCI AVRSFQIVCAFKMASRFPRAYSYWVRYQGPYVSMAFITVLKMI VVIGMLAT
GLSPTTRTDPDDPKITIVSCNPYRNSLLFNTSLDLLSVVGFSAFAYMGKELPTNYNEAKFITLSMTFYF
TSSVSLCTFMSAYSGVLVTIVDLLVTVLNLLAISLGYFGPKCYMILFYPERNTPAYFNSMIQGYTMRRD

TRTRPLEQKLI SEEDLAANDILDYKDDDDKV

Chromatograms: https://cdn.origene.com/chromatograms/mk6123_f11.zip

Restriction Sites: Sgfl-Mlul

Cloning Scheme:

- ACCN:** NM_152232
- ORF Size:** 2517 bp
- OTI Disclaimer:** The molecular sequence of this clone aligns with the gene accession number as a point of reference only. However, individual transcript sequences of the same gene can differ through naturally occurring variations (e.g. polymorphisms), each with its own valid existence. This clone is substantially in agreement with the reference, but a complete review of all prevailing variants is recommended prior to use. [More info](#)
- OTI Annotation:** This clone was engineered to express the complete ORF with an expression tag. Expression varies depending on the nature of the gene.
- Components:** The ORF clone is ion-exchange column purified and shipped in a 2D barcoded Matrix tube containing 10ug of transfection-ready, dried plasmid DNA (reconstitute with 100 ul of water).

Reconstitution Method:

1. Centrifuge at 5,000xg for 5min.
2. Carefully open the tube and add 100ul of sterile water to dissolve the DNA.
3. Close the tube and incubate for 10 minutes at room temperature.
4. Briefly vortex the tube and then do a quick spin (less than 5000xg) to concentrate the liquid at the bottom.
5. Store the suspended plasmid at -20°C. The DNA is stable for at least one year from date of shipping when stored at -20°C.

RefSeq: [NM_152232.1](#), [NP_689418.1](#)

RefSeq Size: 2521 bp

RefSeq ORF: 2520 bp

Locus ID: 80834

UniProt ID: [Q8TE23](#)

Cytogenetics: 1p36.13

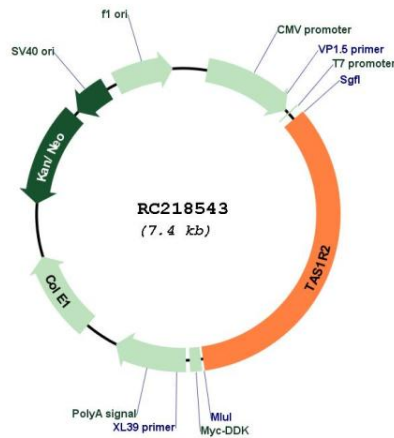
Protein Families: Druggable Genome, Transmembrane

Protein Pathways: Taste transduction

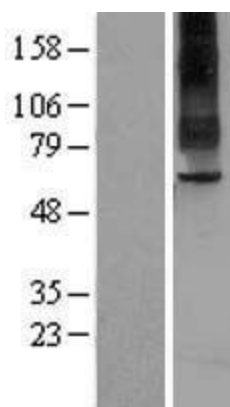
MW: 95 kDa

Gene Summary: Putative taste receptor. TAS1R2/TAS1R3 recognizes diverse natural and synthetic sweeteners. [UniProtKB/Swiss-Prot Function]

Product images:



Circular map for RC218543



Western blot validation of overexpression lysate (Cat# [LY403458]) using anti-DDK antibody (Cat# [TA50011-100]). Left: Cell lysates from untransfected HEK293T cells; Right: Cell lysates from HEK293T cells transfected with RC218543 using transfection reagent MegaTran 2.0 (Cat# [TT210002]).