

Product datasheet for **RC218532**

PSORS1C1 (NM_014068) Human Tagged ORF Clone

Product data:

Product Type: Expression Plasmids
Product Name: PSORS1C1 (NM_014068) Human Tagged ORF Clone
Tag: Myc-DDK
Symbol: PSORS1C1
Synonyms: C6orf16; SEEK1
Mammalian Cell Selection: Neomycin
Vector: pCMV6-Entry (PS100001)
E. coli Selection: Kanamycin (25 ug/mL)
ORF Nucleotide Sequence: >RC218532 representing NM_014068
Red=Cloning site Blue=ORF Green=Tags(s)

TTTTGTAATACGACTCACTATAGGGCGGCCGGAATTCGTCGACTGGATCCGGTACCGAGGAGATCTGCC
GCC**CGATCGC**C

ATGACTTGCACAGACCAAAAAAGTCACTCTCAAAGAGCTCTCGGCACACAGACCCAGCTTTACAAGGAC
CCCAGCTCCTTAACACAGATCCCAGCTCCGAGGAACTCGTCCCCCACGTTAATCCTGACCGACTTTG
CCACATGGAGCCAGCAAACCATTTCTGGCATGCAGGGACCTCCAAGCAATGATATCCAAGGAATCCAT
CTGGCAGCCACCCAGGATGACTGCAGAAAAGGACACAGGAGGATATCCTGGTTCCTCTTCCCACC
CAGAGCTGTTTGCATCAGTCCTGCAATGGCTCCGGAAGAAGCTGCCAGGCTCCAGCAACCTCAGCCCCT
TCCTCCTCCCTCAGGAATCCACCTATCCGCCTCTAGGACCTTGGCTCCAACCTCTATTGTACTCGTCTCCT
CCCTCCATTCTCCTTTTGGTCTCAGCTCCTTGATC

ACGCGTACGCGGCCGCTCGAGCAGAACTCATCTCAGAAGAGGATCTGGCAGCAAATGATATCCTGGATT
ACAAGGATGACGACGATAAGGTTTAA

Protein Sequence: >RC218532 representing NM_014068
Red=Cloning site Green=Tags(s)
MTCTDQKSHSQRALGTQTPALQGPQLLNTDPSSEETRPPHVNPDRLCHMEPANHFHAGDLQAMISKEFH
LAATQDDCRKGRQEDILVPSSHPFLFASVLPMAPEEAARLQQPQLPPPSGIHLSASRTLAPTLLYSSP
PSHSPFGLSSLI

TRTRPLEQKLISEEDLAANDILDYKDDDDKV

Chromatograms: https://cdn.origene.com/chromatograms/mk8021_f10.zip

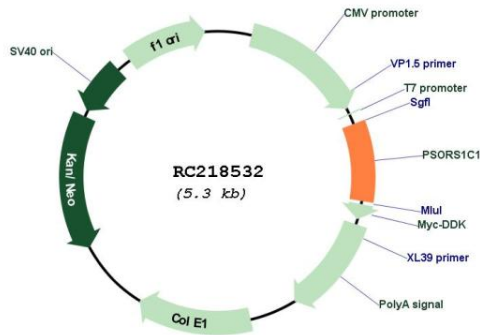


[View online »](#)

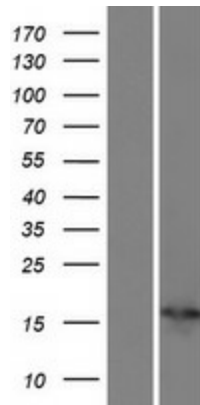
UniProt ID: [Q9UIG5](#)
 Cytogenetics: 6p21.33
 MW: 16.4 kDa

Gene Summary: This gene is one of several genes thought to confer susceptibility to psoriasis and systemic sclerosis, located on chromosome 6 near the major histocompatibility complex (MHC) class I region. [provided by RefSeq, Sep 2011]

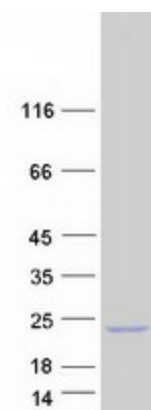
Product images:



Circular map for RC218532



Western blot validation of overexpression lysate (Cat# [LY415493]) using anti-DDK antibody (Cat# [TA50011-100]). Left: Cell lysates from untransfected HEK293T cells; Right: Cell lysates from HEK293T cells transfected with RC218532 using transfection reagent MegaTran 2.0 (Cat# [TT210002]).



Coomassie blue staining of purified PSORS1C1 protein (Cat# [TP318532]). The protein was produced from HEK293T cells transfected with PSORS1C1 cDNA clone (Cat# RC218532) using MegaTran 2.0 (Cat# [TT210002]).