

Product datasheet for **RC218530**

T (NM_003181) Human Tagged ORF Clone

Product data:

Product Type:	Expression Plasmids
Product Name:	T (NM_003181) Human Tagged ORF Clone
Tag:	Myc-DDK
Symbol:	T
Synonyms:	SAVA; T; TFT
Mammalian Cell Selection:	Neomycin
Vector:	pCMV6-Entry (PS100001)
E. coli Selection:	Kanamycin (25 ug/mL)



[View online »](#)

ORF Nucleotide Sequence:

>RC218530 representing NM_003181
 Red=Cloning site Blue=ORF Green=Tags(s)

TTTTGTAATACGACTCACTATAGGGCGGCCGGAATTCGTCGACTGGATCCGGTACCGAGGAGATCTGCC
 GCC**GCGATCGCC**

ATGAGCTCCCCTGGCACCAGAGCGCGGAAAGAGCCTGCAGTACCGAGTGGACCACCTGCTGAGCGCCG
 TGGAGAATGAGCTGCAGGCGGGCAGCGAGAAGGGCGACCCACAGAGCGGAACTGCGCGTGGCCCTGGA
 GGAGAGCGAGCTGTGGCTGCGCTTCAAGGAGCTACCAATGAGATGATCGTGACCAAGAACGGCAGGAGG
 ATGTTTCCGGTGTGAAGGTGAACGTGTCTGGCCTGGACCCCAACGCCATGTACTCCTTCTGCTGGACT
 TCGTGGCGGGGACAACCACCGTGAAGTACGTGAACGGGGAATGGGTGCCGGGGGGAAGCCGGAGCC
 GCAGGGCGCCAGCTGCGTCTACATCCACCCGACTCGCCCAACTCGGGGCCACTGGATGAAGGCTCCC
 GTCTCCTCAGCAAAGTCAAGCTACCAACAAGCTCAACGGAGGGGGCCAGATCATGCTGAACTCCTTGC
 ATAAGTATGAGCCTCGAATCCACATAGTGAGAGTTGGGGTCCACAGCGCATGATCACCAGCCACTGCTT
 CCCTGAGACCCAGTTCATAGCGGTGACTGCTTATCAGAACGAGGAGATCAGACTCTTAAAATTAAGTAC
 AATCCATTTGCAAAGCTTTCTTGATGCAAAGGAAAGAAGTGATCACAAGAGATGATGGAGGAACCCG
 GAGACAGCCAGCAACCTGGTACTCCCAATCAGGGGGTGGCTTCTTCTGGAACACGACCCCTGTGTCC
 ACCTGCAAATCCTCATCCTCAGTTTGGAGGTGCCCTCTCCCTCCCTCCACGCACAGCTGTGACAGGTAC
 CCAACCCTGAGGAGCCACCGTCTCACCTACCCAGCCCTATGCTCATCGGAACAATTTCCAACCT
 ATTCTGACAACTCACCTGCATGTTTATCCATGCTGCAATCCCATGACAATTGGTCCAGCCTTGAATGCC
 TGCCCATCCCAGCATGCTCCCGTGAGCCACAATGCCAGCCACCTACCAGCTCCAGTCACTACCCAGC
 CTGTGGTCTGTGAGCAACGGCGCCGTACCCCGGGTCCCAGGCAGCAGCCGTGTCCAACGGGCTGGGG
 CCCAGTTCTTCCGGGGTCCCCCGGCACTACACACCCCTACCCATCCGGTCTCGGGGCCCTTCTCCTC
 GGATCCCACTGTACGAAGGGCGGCCGCGCCACAGACATCGTGACAGCCAGTACGACGCCGAGCC
 CAAGGCCGCTCATAGCCTCATGGACCTGTGTGCCACCTTCCATG

ACGCGTACGCGGCCGCTCGAGCAGAACTCATCTCAGAAGAGGATCTGGCAGCAATGATATCCTGGATT
 ACAAGGATGACGACGATAAGGTTTAA

Protein Sequence:

>RC218530 representing NM_003181
 Red=Cloning site Green=Tags(s)

MSSPGTESAGKSLQYRVDHLLSAVENELQAGSEKGDPTERELRVGLEESELWLRFKELTNEMIVTKNGRR
 MFPVLKVNVSGLDPNAMYSFLDFVAADNHRWKYVNGEWVPGGKPEPQAPSCVYIHPDSPNFGAHWMKAP
 VFSKVKLTNKLNGGGQIMLNSLHKYEPRIHIVRVGGPQRMITSHCFPETQFIAVTAYQNEEITALKIKY
 NPFKAFLLDAKERSDHKEMMEEPGDSQQPGYSQSGGWLLPGTSTLCPANPHPQFGGALSLPSTHSCDRY
 PTLRSHRSPYPSPYAHRRNNSPTYSDNSPACLSMLQSHDNWSSLGMPAHPMSMLPVSHNASPPTSSSQYPS
 LWSVSNGAVTPGSQAAAANSNGLGAQFRGSPAHYTPLTHPVSAOSSSGLYEGAAAATDIVDSQYDAAA
 QGRLIASWTPVSPPSM

TRTRPLEQKLISEEDLAANDILDYKDDDDKV

Chromatograms:

https://cdn.origene.com/chromatograms/mg2469_a01.zip

Restriction Sites:

SgfI-MluI

Cloning Scheme:


ACCN: NM_003181

ORF Size: 1308 bp

OTI Disclaimer: The molecular sequence of this clone aligns with the gene accession number as a point of reference only. However, individual transcript sequences of the same gene can differ through naturally occurring variations (e.g. polymorphisms), each with its own valid existence. This clone is substantially in agreement with the reference, but a complete review of all prevailing variants is recommended prior to use. [More info](#)

OTI Annotation: This clone was engineered to express the complete ORF with an expression tag. Expression varies depending on the nature of the gene.

Components: The ORF clone is ion-exchange column purified and shipped in a 2D barcoded Matrix tube containing 10ug of transfection-ready, dried plasmid DNA (reconstitute with 100 ul of water).

Reconstitution Method:

1. Centrifuge at 5,000xg for 5min.
2. Carefully open the tube and add 100ul of sterile water to dissolve the DNA.
3. Close the tube and incubate for 10 minutes at room temperature.
4. Briefly vortex the tube and then do a quick spin (less than 5000xg) to concentrate the liquid at the bottom.
5. Store the suspended plasmid at -20°C. The DNA is stable for at least one year from date of shipping when stored at -20°C.

Note: Plasmids are not sterile. For experiments where strict sterility is required, filtration with 0.22um filter is required.

RefSeq: [NM_003181.4](#)

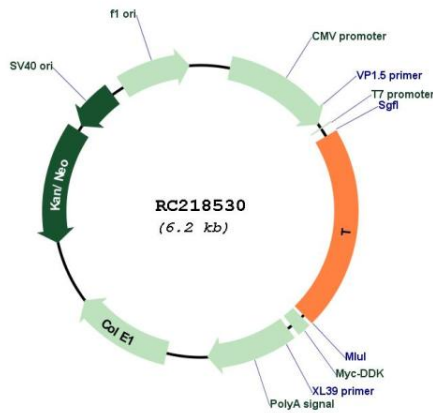
RefSeq Size: 2518 bp

RefSeq ORF: 1308 bp

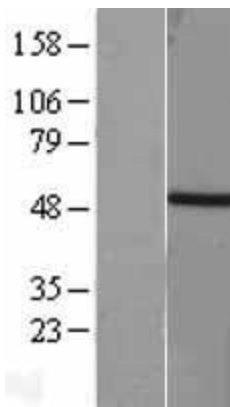
Locus ID: 6862

UniProt ID: [O15178](#)
Cytogenetics: 6q27
Protein Families: ES Cell Differentiation/IPS, Transcription Factors
MW: 47.3 kDa
Gene Summary: The protein encoded by this gene is an embryonic nuclear transcription factor that binds to a specific DNA element, the palindromic T-site. It binds through a region in its N-terminus, called the T-box, and effects transcription of genes required for mesoderm formation and differentiation. The protein is localized to notochord-derived cells. Variation in this gene was associated with susceptibility to neural tube defects and chordoma. A mutation in this gene was found in a family with sacral agenesis with vertebral anomalies. [provided by RefSeq, Sep 2018]

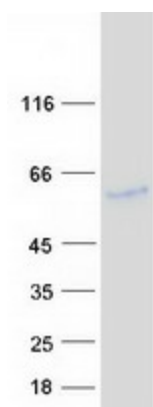
Product images:



Circular map for RC218530



Western blot validation of overexpression lysate (Cat# [LY401103]) using anti-DDK antibody (Cat# [TA50011-100]). Left: Cell lysates from untransfected HEK293T cells; Right: Cell lysates from HEK293T cells transfected with RC218530 using transfection reagent MegaTran 2.0 (Cat# [TT210002]).



Coomassie blue staining of purified TBXT protein (Cat# [TP318530]). The protein was produced from HEK293T cells transfected with TBXT cDNA clone (Cat# RC218530) using MegaTran 2.0 (Cat# [TT210002]).